

GAF AtticVentilation

& Rooftop accessory products

Products shown: GAF Master Flow™ SSB960 Super Slant-Back Roof Louver with Timberline® UHDZ™ Shingles and TimberTex® Premium Ridge Cap Shingles in Weathered Wood



Discover the advantage of premium airflow






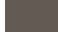
GAF Attic Ventilation Products offer diverse ventilation solutions to help reduce damaging heat and moisture in attics.

We protect what matters most™

GAF

	Pages
Ventilation education	1–9
Protect your investment	3
Attic ventilation is good business	4–5
Comprehensive coverage	6–7
Attic ventilation calculator	8–9
Attic ventilation — exhaust	10–21
Static	12–15
Ridge vents	12
Hip vents	13
Roof louvers	14–15
Powered	16–19
Roof mount — electric	16
Roof mount — solar & dual-powered	17
Gable mount — electric	18
Gable mount — solar-powered	19
Accessories	19
Mechanical	20–21
Wind turbines	20
Accessories	21
Attic ventilation — intake	22–25
Soffit/undereave	24
Rooftop	25
Rooftop accessories	26–31
Flashing, caps, and collars	28–29
Chimney caps	30–31
Foundation/crawl space ventilation	32–35
Foundation vents	34–35

Complementary Color Options

	Black		White
	Weathered Wood		Almond (paintable)
	Brown		Mill
	Gray		Stainless Steel
	ShingleMatch™ Weathered Wood		



Protect your investment



Protect your investment by effectively managing heat and moisture, which not only helps promote energy efficiency but also helps safeguard natural resources.



Contains recycled content



Ventilates without external power



Solar powered

Products shown: GAF Master Flow™ Pivot™ Pipe Boot Flashing and Cobra® Rigid Vent 3™ Premium Exhaust Vent for Roof Ridge installed with Timberline® UHDZ™ Shingles in Charcoal

Protect your investment

Attic ventilation is good business



Attic ventilation is good business

For a simple gable roof design with ample ridge line, Cobra® Ridge Ventilation Products are most suitable. For hips, dormers, valleys or more complex roof designs with little or no ridge area, reach for Master Flow™ off-ridge vents.

Discover how Master Flow™ and Cobra® products can play a pivotal role in maximizing the benefits of GAF Residential Enhanced Warranties, ensuring lasting peace of mind for homeowners while helping to differentiate your business from competition.



Ridge vents
Gable roof designs












Off-ridge vents
Hip or more complex roof designs

To learn more visit gaf.com/ventilation



Products shown: GAF Master Flow™ Pivot™ Pipe Boot Flashing and Master Flow™ Goose Neck Bath and Dryer Vent installed with Timberline HDZ® Shingles in Pewter Gray

Comprehensive coverage

	Covered by GAF Limited Product Warranties ¹	Eligible for GAF Enhanced Warranty Coverage ²	Eligible Component for the GAF WindProven™ Limited Wind Warranty on LayerLock® Shingles ³	Part of the GAF Lifetime [†] Roofing System
		  		
 Cobra® Attic Ventilation Products	✓	✓	✓	✓
 MasterFlow™ Ventilation Products	✓	✓	✓	
 Master Flow™ Pivot™ Pipe Boot Flashing	✓	✓		
All other Master Flow™ products	✓			

[†] Lifetime refers to the length of warranty coverage provided and means as long as the original individual owner(s) of a single-family detached residence [or eligible second owner(s)] owns the property where the qualifying GAF products are installed. For other owners/structures, Lifetime coverage is not applicable. Lifetime coverage on shingles requires the use of GAF Lifetime Shingles only. See the *GAF Shingle & Accessory Limited Warranty* for complete coverage and restrictions. Visit gaf.com/LRS for qualifying GAF products. Lifetime coverage on shingles and accessories requires the use of any GAF Lifetime Shingle and at least 3 qualifying GAF Accessories. See the *GAF Roofing System Limited Warranty* for complete coverage and restrictions. For installations not eligible for the *GAF Roofing System Limited Warranty*, see the *GAF Shingle & Accessory Limited Warranty*. Visit gaf.com/LRS for qualifying GAF products.

¹ See *GAF Shingle & Accessory Limited Warranty*, *Master Flow™ Ventilation Products Limited Warranty*, *Master Flow™ Powered Ventilation Products Limited Warranty*, *Master Flow™ Wi-Fi Attic Vent Limited Warranty*, and the *Master Flow™ Pivot™ Pipe Boot Flashing Limited Warranty* (depending on product) for complete coverage and restrictions.

² Master Flow™ Attic Ventilation Products on qualifying installations are covered by the *GAF System Plus*, *Silver Pledge™* & *Golden Pledge® Limited Warranties*. Master Flow™ Attic Ventilation Products installed on projects that are not covered by a *GAF System Plus*, *Silver Pledge™*, or *Golden Pledge® Limited Warranty* are covered by either the *Master Flow™ Powered Ventilation Products Limited Warranty*, *Master Flow™ Ventilation Products Limited Warranty*, *Master Flow™ Wi-Fi Attic Vent Limited Warranty*, or *Master Flow™ Pivot™ Pipe Boot Flashing Limited Warranty*, depending on product. Please visit gaf.com for copies of these warranties.

³ 15-year WindProven™ Limited Wind Warranty covers GAF Shingles with LayerLock® Technology only and requires the use of GAF Starter Strips, Roof Deck Protection, Ridge Cap Shingles, and Leak Barrier or Attic Ventilation. See *GAF Roofing System Limited Warranty* for complete coverage and restrictions. Visit gaf.com/LRS for qualifying GAF products. For installations not eligible for the *WindProven™ Limited Wind Warranty* see *GAF Shingle & Accessory Limited Warranty* for complete coverage and restrictions.



Attic ventilation calculator

Visit gaf.com/VentCalculator to calculate the amount of Cobra® and Master Flow™ vents needed for your next job.

In addition, QuickMeasure™ reports include popular GAF Attic Vents with recommended quantities for each project.



The 1:300 ventilation rule

Include a minimum of 1 sq. ft. of ventilation, evenly split between intake and exhaust, for every 300 sq. ft. of attic floor



Balanced ventilation

Amount of intake = Amount of exhaust

To learn more visit gaf.com/VentCalculator

Attic ventilation — exhaust



Attic ventilation — exhaust

Allows excess heat and moisture to escape, safeguarding the attic and your roofing system from premature degradation.

Static Vents

Ridge and hip vents

Premium 4' (1.2 m) non-filtered ridge vent for warm climates

Featured product

Cobra® Rigid Vent 3™ Premium Exhaust Vent

- 3" (76 mm) corrosion-resistant ring shank nails
- 3" (76 mm) EasyTear® Sizing Feature
- 18 sq. in. of NFA per LF (38,100 mm² per LM)
- 11.5" (292 mm) & 9" (229 mm) widths. Roof slopes 3:12 – 16:12

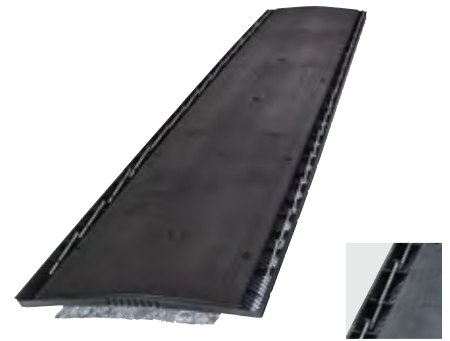


Premium 4' (1.2 m) filtered ridge vent for cold climates

Featured product

Cobra® SnowCountry® Advanced Premium Exhaust Vent

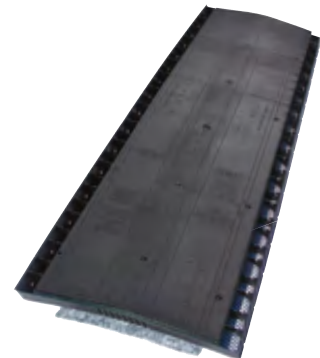
- Snow Guard™ Filter resists weather/insect/leaf infiltration
- 3" (76 mm) corrosion-resistant ring shank nails
- 3" (76 mm) EasyTear® sizing feature
- 18 sq. in. of NFA per LF (38,100 mm² per LM)
- 11.5" (292 mm) & 9" (229 mm) widths. Roof slopes 3:12 – 16:12



Quality 4' (1.2 m) filtered ridge vent for cold climates

Cobra® SnowCountry® Exhaust Vent

- Snow Guard™ Filter resists weather/insect/leaf infiltration
- 3" (76 mm) EasyTear® sizing feature
- 18 sq. in. of NFA per LF (38,100 mm² per LM)
- 11.5" (292 mm) width. Roof slopes 3:12 – 16:12



Plastic roll ridge vent for all climates

Cobra® RidgeRunner® Exhaust Vent

- Nail gunnable — includes 1 3/4" (44 mm) corrosion-resistant coil nails
- Weather Fighter® Filter resists weather/insect/leave infiltration
- 12" EasyTear® feature
- 12.5 sq. in. of NFA per LF (26,458 mm² per LM)
- 11.5" (292 mm) width, 20' (6.1 m) length. Roof slopes 3:12-16:12



Mesh roll ridge vent for all climates

Cobra® Exhaust Vent for Roof Ridge

- Nail gunnable and hand nailable options
- Corrosion-resistant 2 1/2" (64 mm) Smart Nails™ or 1 3/4" (44 mm) Coil Nails
- Nail gunnable: 14.1 sq. in. of NFA per LF (29,845 mm² per linear meter); Hand nailable: 16.9 sq. in. of NFA per LF (35,772 mm² per linear meter)
- 10 1/2" (267 mm), 8" (203 mm), and 11 3/4" (298 mm) widths; 20' (6.1 m) and 50' (15.24 m) lengths. Roof slopes 2:12 – 20:12



Aluminum ridge vent

Master Flow™ Ridge Vent — Aluminum AR10/AR10H

- Pre-punched nail holes and built-in baffle
- 21.5 sq. in. of NFA per LF (45,508 mm² per linear meter)
- 10' (3 m) length. Roof slopes 3:12 – 12:12
- End Plug/Connector and Joint Straps available from GAF



4' (1.2 m) filtered hip vent for all climates

Cobra® Hip Vent

- Dual Weather Fighter® Filter resists weather/insect/leaf infiltration
- Nail gunnable — includes 1 3/4" (44 mm) corrosion-resistant coil nails
- 9 sq. in. of NFA per LF (19,050 mm² per LM)
- 11.5" (292 mm) width. Roof slopes 3:12 – 12:12

Note: For use on hips only. Not for use on ridges.



Static vents

Roof louvers

Plastic

Master Flow™ Roof Louver IR65 Plastic Slant-Back

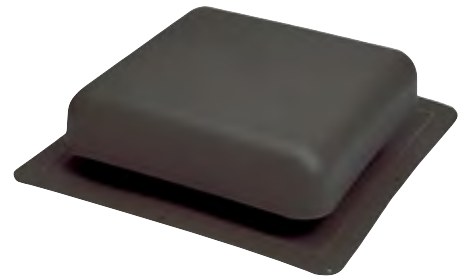
Premium slant-back roof vent

- Strong weather resistance
- Durable, snap-in hood with internal screen
- 65 sq. in. of NFA (41,935 mm²)
- Roof slopes 3:12 & greater



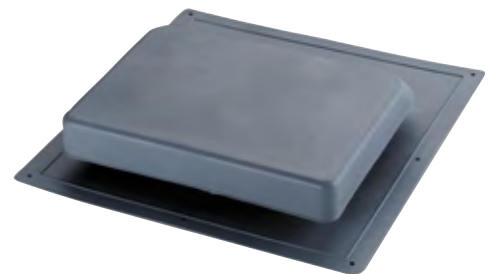
Master Flow™ Roof Louver RT65 Plastic Square-Top

- Square top with round throat
- 60 sq. in. of NFA (38,710 mm²)
- Roof slopes 3:12 & greater



Master Flow™ Roof Louver IR61 Plastic Slant-Back

- Low-profile design
- 37 sq. in. of NFA (23,871 mm²)
- Roof slopes 3:12 & greater



Metal

Featured product

Master Flow™ Roof Louver SSB960 Metal Slant-Back

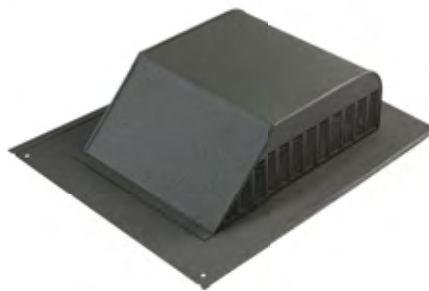
Premium super slant-back roof vent

- Strong weather resistance
- Aluminum or galvanized construction
- Optional internal Weather/Ember-Resistant Screen¹
- 60 sq. in. of NFA (38,710 mm²). Roof slopes 3:12 & greater

Aluminum:



Galvanized:



Master Flow™ Roof Louver RV50 Metal Square-Top with Round Throat

- Aluminum or galvanized construction
- 50 sq. in. of NFA (32,258 mm²)
- Roof slopes 3:12 & greater



Master Flow™ Roof Louver R50 Metal Square-Top with Square Throat

- Aluminum construction
- 50 sq. in. of NFA (32,258 mm²)
- Roof slopes 3:12 & greater



Master Flow™ High-Capacity Dome Vent — HCD144

- Large static venting capacity
- Heavy-duty internal screen
- 144 sq. in. of NFA (92,909 mm²)
- Roof slopes 3:12 & greater



¹ Meets the prescriptive requirements of Chapter 7A-Materials and Construction Methods for Exterior Wildfire Exposure of the California Building Code, 2022 edition. Always check with the authority having jurisdiction for approval before use.

Powered vents

Roof mount

Electric — household power

Featured product

Master Flow **EZ Cool™** Plug-in Power Attic Vent

Helps eliminate the hassles and expense of electrical work

- ETL-listed 25' (7.62 m) power cord plugs into standard 110v electrical outlets
- Preset thermostat. Optional humidistat/thermostat.
- Optional Master Flow QuickConnect™ Wi-Fi Technology
- 1,050 CFM airflow, 2,000 sq. ft. (186 m²) per vent
- Roof slopes 2:12 – 12:12



Master Flow™ Power Attic Vent — ERV Series

- High-efficiency PSC motors
- Adjustable thermostat. Optional humidistat/thermostat (HT models).
- Compact hood with durable internal screen
- Roof slopes 2:12 – 12:12

ERV4/ER4VHT

- Provides 1,000 CFM airflow and vents up to 1,600 sq. ft. (149 m²)

ERV5/ERV5HT

- Provides 1,250 CFM airflow and vents up to 2,200 sq. ft. (204 m²)

ERV6/ERV6HT

- Provides 1,500 CFM airflow and vents up to 2,800 sq. ft. (260 m²)

All Models:



ERV6/ERV6HT:



Master Flow™ Wi-Fi Attic Vent

Wirelessly control the vent with built-in Master Flow QuickConnect™ Wi-Fi Technology

- Humidistat, thermostat, and timer
- High-efficiency PSC motor
- Provides 1,250 CFM airflow and vents up to 2,200 sq. ft. (204 m²)
- Roof slopes 2:12 – 12:12



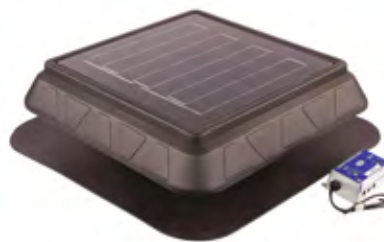
Solar & dual-powered

Featured product

Master Flow™ GreenMachine™ High-Power Solar Roof Vent - PRSOLAR2

Uses the sun's power to cool the attic

- Low-profile polypropylene design with integrated 30-watt solar panel
- Adjustable humidistat/thermostat
- 750 CFM airflow and vents up to 1,070 sq. ft. (99 m²)
- Roof slopes 2:12 – 12:12



Master Flow™ GreenMachine™ High-Power Solar Roof Vent — Dual-Powered - PRHYBRID2

Hybrid operation switches automatically between solar and house power

- Low-profile polypropylene design with integrated 30 watt solar panel
- Adjustable thermostat
- 750 CFM airflow (solar operation), 900 CFM airflow (house power). and vents up to 1,070 sq. ft. (99 m²)
- Roof slopes 2:12 – 12:12



Master Flow™ GreenMachine™ Solar-Powered Roof Vent — ERVSOLAR

- Traditional metal design with fully adjustable, tilt/swivel 15-watt solar panel
- 525 CFM airflow and vents up to 800 sq. ft. (74 m²)
- Roof slopes 2:12 – 12:12



Master Flow™ GreenMachine™ Dual-Powered Roof Vent — ERVHYBRID

- Traditional metal design with fully adjustable, tilt/swivel 15-watt solar panel
- Hybrid dual-power switches automatically between solar and house power
- Adjustable thermostat
- 525 CFM airflow (solar operation), 750 CFM airflow (house power). and vents up to 800 sq. ft. (74 m²)
- Roof slopes 2:12 – 12:12



Powered vents

Gable mount

Electric

Featured product

Master Flow **EZ Cool™** Plug-in Power Attic Vent

Helps eliminate the hassles and expense of electrical work

- ETL-listed 25' (7.6 m) power cord plugs into standard 110v electrical outlets
- High-efficiency motor with preset thermostat. Optional humidistat/thermostat control.
- Includes fan blade guard
- Optional Master Flow QuickConnect™ Wi-Fi Technology
- 1,375 CFM airflow and vents up to 2,400 sq. ft. (223 m²)



Master Flow™ Power Attic Vent — EGV Series

- High-efficiency PSC motors
- Adjustable thermostat. Optional humidistat/thermostat (HT models).

EGV5/ EGV5HT

- Provides 1,450 CFM airflow and vents up to 2,800 sq. ft. (260 m²)

EGV6/EGV6HT

- Provides 1,600 CFM airflow and vents up to 3,000 sq. ft. (279 m²)



Master Flow™ Wi-Fi Attic Vent

Wireless control with built-in Master Flow QuickConnect™ Wi-Fi Technology

- High-efficiency PSC motor
- Humidistat, thermostat, and timer
- 1,450 CFM airflow and vents up to 2,300 sq. ft. (214 m²)



Solar-powered

Master Flow™ GreenMachine™ Solar-Powered Gable Vent — PGSOLAR

- Includes 15-watt tilttable, remote-mount solar panel
- 685 CFM airflow and vents up to 985 sq. ft. (92 m²)



Power vent accessories

Master Flow QuickConnect™ Wi-Fi Module

- Add-on accessory for Master Flow™ ERV & EGV series power attic vents
- Control multiple connected vents from a single app login
- Adjustable humidistat, thermostat, and timer



Master Flow™ Adjustable Humidistats & Thermostats

- Fully adjustable. Helps power attic vents efficiently reduce attic heat and/or moisture.
- For all current GAF Master Flow™ and previous LL Building Products single-speed roof and gable mount power attic vents

Humidistat — H1

- Optional add-on to existing thermostatically-controlled Master Flow™ Power Attic Vents that works in conjunction with the Master Flow™ PT6 Thermostat

Combo Humidistat/Thermostat — HT1

Thermostat — PT6



Master Flow™ High-efficiency PSC Replacement Motors

PVM105 — 1/12 HP

- For the following current GAF Master Flow™ Power Attic Vent models: ERV4, ERV5, & EGV5
- Also, for previous GAF Master Flow™ PR1, PR2, PG1, & PG2 models

PVM112 — 1/9 HP

- For the following current GAF Master Flow™ Power Attic Vent models: ERV6 & EGV6

PVM115 — 1/5 HP

- For the following previous GAF Master Flow™ Power Attic Vent models: PR3 & PG3



Master Flow™ Automatic Gable Shutter — SGM20

- Paintable, white aluminum construction
- For GAF Master Flow™ and other popular brand gable mount power attic vents
- Air movement automatically opens the louvers when vent is operating



Mechanical vents

Wind turbines

Wind turbines

Master Flow™ 12" Wind Turbine — Galvanized Externally Braced - GC12E/GC12EF

- Vents up to 700 sq. ft. (65 m²)
- Externally braced construction
- Available in heavy construction (GC12EF model)
- Exclusive stainless dual-bearing system for durable, long-lasting, and smooth operation



Master Flow™ Wind Turbines — Aluminum Internally Braced

- Internally braced construction
- Exclusive stainless dual-bearing system for durable, long-lasting, and smooth operation

12" — AIC12

- Vents up to 700 sq. ft. (65 m²)



14" — AIC14

- Vents up to 1,000 sq. ft. (93 m²)



Master Flow™ 12" Wind Turbine — Galvanized Internally Braced — GIC12

- Vents up to 1,000 sq. ft. (93 m²)
- Internally braced construction
- Exclusive stainless dual-bearing system for durable, long-lasting, and smooth operation



Accessories

Master Flow™ 12" Wind Turbine Galvanized Weather Cap — WC12

- For use with 12" wind turbines



Master Flow™ 12" Wind Turbine Galvanized Adjustable Base — SBX12

- For 12" wind turbines



Master Flow™ Wind Turbine Replacement Heads

- Large assortment of replacement heads to fit GAF Master Flow™ and other popular brand wind turbines
- 12" and 14" head sizes available
- Galvanized and aluminum construction available

12" Galvanized Externally Braced — GT12E



12" Galvanized Internally Braced — GTH12I



14" Aluminum Internally Braced — ATH14I



12" Aluminum Internally Braced — ATH12I



Attic ventilation — intake



Attic ventilation — intake

A critical part of a balanced and effective attic ventilation system, it allows cooler fresh air to enter the attic, helping ensure efficient operation of exhaust vents.

Intake vents

Soffit/Undereave and Rooftop

Aluminum

Master Flow™ Undereave Intake Vent
Aluminum — EAC Series

- Screened aluminum construction
- Surface-mount with pre-punched nail holes
- 16" x 8" (406 mm x 203 mm), NFA 50 sq. in. (32,258 mm²)
- 16" x 4" (406 mm x 102 mm), NFA 26 sq. in. (16,744 mm²)

Master Flow™ Undereave Intake Vent
Aluminum Continuous — LSV8

- Durable 8' (2.4 m) aluminum louvered construction
- New construction and retrofit application
- 8.5 Sq. in. of NFA per LF (17,992 mm² per LM)



Plastic

Master Flow™ Undereave Intake Vent
Plastic — EAP

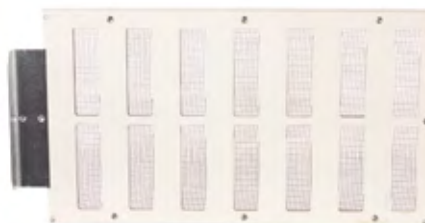
- High-impact resin construction with UV inhibitors
- One-piece 4" x 12" (102 mm x 305 mm) oval snap-in design
- 22 sq. in. of NFA (14,194 mm²)



Closeable

Master Flow™ EmberShield® Closeable Soffit Vent

- Allows manual open/close vent operation to help resist ember intrusion during risk of wildfire
- New construction and retrofit application
- Durable internal screen
- 16.5" x 9" (419 mm x 229 mm); NFA 56 sq. in. (36,129 mm²)



Composite roll

Cobra IntakePro® Rooftop Intake Vent

- Tapered roll intake vent for all climates
- For intake venting at eave edge or upslope areas. Also approved for exhaust at roof-to-wall transitions etc. (Contact GAF.)
- Nail gunnable — includes 1 3/4" (44 mm) coil nails and end cap fabric
- 9 sq. in. of NFA per LF (19,050 mm² per LM)
- 11" (279 mm) width; 20' (6.1 m) length. Roof slopes 4:12 and greater.



Product placement





Products Shown: GAF Master Flow™ Pivotal™ Pipe Boot Flashing
with Timberline® UHDZ™ Shingles in Charcoal

Rooftop accessories

Help to reduce the risk of leaks and premature roof system degradation while providing excellent durability and aesthetics.

Rooftop accessories

Flashing, caps, & collars

Flashing and caps

Featured product

Master Flow™ Pivot™ Pipe Boot Flashing

- Tough, all-metal construction
- Simple rooftop pitch adjustment 3:12 – 12:12
- Extra-large 3" (76.2 mm) flashing
- Models for pipe inner diameters (ID): 1.5", 2", 3" & 4" (25 mm, 51 mm, 76 mm & 102 mm)
- Warrantied against leaks for up to 50 years¹



Featured product

Master Flow™ Versa Caps

- Weather-resistant protection for rooftop flues, hot stacks, and B-vents
- Positive draft design
- Large variety of sizes to fit pipes with outside diameters from 2 7/8" up to 10 7/8" (73 mm up to 254 mm), includes screwdriver-adjustable clamp



Master Flow™ Goose Neck Vents

- Streamlined design for weather resistance and enhanced aesthetics
- Includes damper & heavy duty removable screen
- Available in Aluminum — Mill, or Galvanized — Black

Aluminum: Galvanized:



Master Flow™ All-Purpose Vents

- Flexible 10" (255 mm) base opening
- Strong 26-gauge; specified .019
- All-purpose design



Master Flow™ Vent Caps

- To cap pipes through roof for rain, snow, and debris protection
- 28 gauge



Master Flow™ Roof Flashing With Tapered Stack

- Press-sealed design
- Strong 30 gauge; specified .013 – .015
- Four versatile sizes



Master Flow™ Roof Jack with Vent Cap

- Built-in roof flashing — press sealed design for maximum leak protection
- Made for 4:12 roof pitch — adapts to pitches from 3:12 to 5:12
- Includes cap for rain, snow, and debris



Miscellaneous

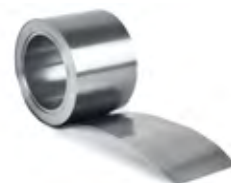
Master Flow™ Storm Collars

- For rain, snow, and debris protection
- Adjustable for use with various roof pitches
- 28-gauge galvanized steel



Master Flow™ Moss & Mildew Preventer Zinc Strip

- Easily installs near the roof ridge
- Resists moss & mildew growth
- For shingle, wood, or tile roofs



Rooftop accessories

Chimney caps & leg kits

Adjustable chimney caps

Master Flow™ Chimney Cap Large Adjustable

- Help protect against dangerous sparks, while reducing the risk of downdrafts, clogging or soot build-up, and animal infestation
- Single-piece, heavy-gauge hood design — no rivets or seams to corrode
- Easy installation on most standard chimneys using a screwdriver
- Versatile adjustable design with unique “lock-jaw” bracket that mounts cap securely in place
- Epoxy-coated finish for long-lasting protection



Fits flue tile outer dimensions

9" x 18" (229 mm x 457 mm)

12" x 16" (305 mm x 406 mm)

13" x 18" (330 mm x 457 mm)

Oval 8" x 17" – 13" x 17" (203 mm x 432 mm – 330 mm x 432 mm)



Master Flow™ Chimney Cap Small Adjustable

- Help protect against dangerous sparks, while reducing the risk of downdrafts, clogging or soot build-up, and animal infestation
- Single-piece, heavy-gauge hood design — no rivets or seams to corrode
- Easy installation on most standard chimneys using a screwdriver
- Versatile adjustable design with unique “lock-jaw” bracket that mounts cap securely in place
- Epoxy-coated finish for long-lasting protection



Fits flue tile outer dimensions

8" x 8" – 13" x 13" (203 mm x 203 mm – 330 mm x 330 mm)

Round 8" O.D. – 12" O.D. (203 mm – 305 mm)



Galvanized chimney cap

Master Flow™ **Chimney Cap Galvanized Steel**

- Help protect against dangerous sparks, while reducing the risk of downdrafts, clogging or soot build-up, and animal infestation
- Single-piece, heavy-gauge hood design — no rivets or seams to corrode
- Easy installation on most standard chimneys using a screwdriver



Model/size	Fits flue tile outer dimensions
9" x 9" (229 mm x 229 mm)	7.5" x 7.5" - 9.5" x 9.5" (191 mm x 191 mm – 241 mm x 241 mm)
9" x 13" (229 mm x 330 mm)	7.5" x 11.5" – 9.5" x 13.5" (191 mm x 292 mm – 241 mm x 343 mm)
13" x 13" (330 mm x 330 mm)	11.5" x 11.5" – 13.5" x 13.5" (292 mm x 292 mm – 343 mm x 343 mm)



Leg kits

Master Flow™ **Chimney Cap Leg Kits**

SCLK

- For GAF Master Flow™ Galvanized Steel Chimney Caps





Foundation/ crawl space ventilation

Help reduce elevated levels of moisture that can lead to mold growth and structural decay in the crawl space/foundation area of your home.

Foundation/crawl space ventilation

Vents & covers

Vents

Master Flow™ Foundation Vent — Automatic

- Automatic operation
- Easy, snap-in installation
- 16" x 8" (406 mm x 203 mm); NFA 57 sq. in. (36,774 mm²)



Master Flow™ Foundation Vent — Powered

- Powered operation
- Easy, plug-and-go operation
- 16" x 8" (406 mm x 203 mm); NFA 57 sq. in. (36,774 mm²)



Master Flow™ Foundation Vent — Block Style

- Aluminum vanes; lintel not required
- For block, brick, or frame construction
- Recommended for high-level ventilation
- 16" x 8" (406 mm x 203 mm); NFA 73 sq. in. (47,097 mm²)



Master Flow™ Foundation Vent — Grate Style

- Positive open/close damper action
- Lintel for foundation block construction
- 16" x 8" (406 mm x 203 mm); NFA 28 sq. in. (18,065 mm²)



Master Flow™ Foundation Vent — Grill Style

- Grill style foundation vent in die-cast aluminum
- Nail to floor joists or use as block replacement
- 16" x 8" (406 mm x 203 mm); NFA 50 sq. in. (32,258 mm²)



Master Flow™ Foundation Vent — Grill Style with Lintel

- Die-cast aluminum vanes
- Includes damper and lintel
- Designed for nailing to floor joists or as a foundation block replacement
- 16" x 8" (406 mm x 203 mm); NFA 50 sq. in. (32,258 mm²)



Vent Covers

Master Flow™ Foundation Vent Cover

- Easy installation
- Fits on most 16" x 8" (406 mm x 203 mm) foundation vents
- Helps protect against weather, rodent, and insect infiltration





GAF Technical Services:

877-GAF-ROOF and technicalquestions@gaf.com

Dedicated GAF Master Flow™ Technical Services:

800-211-9612 and MasterFlowTech@gaf.com