

GRT CONCRETE PAVERS

GRT Concrete Pavers, designed for durability and stability, are an attractive and functional hardscaping option for creating gathering spaces or adding walking paths to patios, terraces, and rooftop areas. When installed with GRT Pedestals, these pavers offer a practical way to hide and protect roof penetrations, pipes, and uneven surfaces. GRT Concrete Pavers are available in a variety of aesthetic colors, textures, and sizes, and are A MADE IN THE USA product.



MATERIAL	Portland Cement (ASTM C150)
DIMENSIONS	24" x 24" x 2" (nominal and actual) 24" x 36" x 2" (nominal and actual) 18" x 36" x 2" (nominal and actual)
WEIGHT	24" x 24" x 2" = 98 lbs. 24" x 36" x 2" = 147 lbs. 18" x 36" x 2" = 110 lbs.
COLORS & FINISHES	Diamond or Matte Finish in Natural Gray and Cement Color Antique Finish (Tudor Equiv.) in Colors Shown Above Pigment conforming to ASTM C979
WATER ABSORPTION	≤ 0.5% (ASTM C140)
COMPRESSION STRENGTH	Average of 55 MPa (8500 psi); with no individual unit < 50 MPa
FLEXURAL STRENGTH	870 PSI (NCMA testing procedures min. req. strength 650 psi)
FREEZE-THAW DURABILITY	< 1% weight loss (ASTM C262)

COLORS & FINISHES

NATURAL GRAY - Matte, Diamond, & Shotblast Finish



PA -17



PA -17D



PA -17M

STANDARD COLORS - Shotblast Finish



PA -14



PA -16



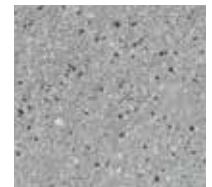
PA -18



PA -110



PA -113



PA -123



PA -127



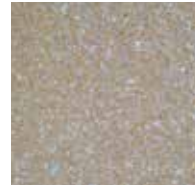
PA -131



PA -132



PA -150



PA -158



PA -160



PA -161



PA -162



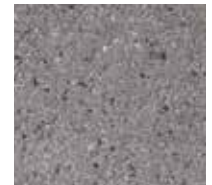
PA -163



PA -166



PA -168



PA -179

PREMIUM COLORS - Shotblast Finish



PA -11



PA -12



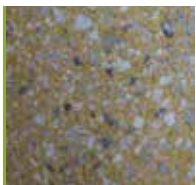
PA -129



PA -145



PA -153



PA -165



PA -171



PA -175



PA -178



PA -189

* Pavers listed in bold are available in the GRT Sample Box; other paver sample colors are available upon request