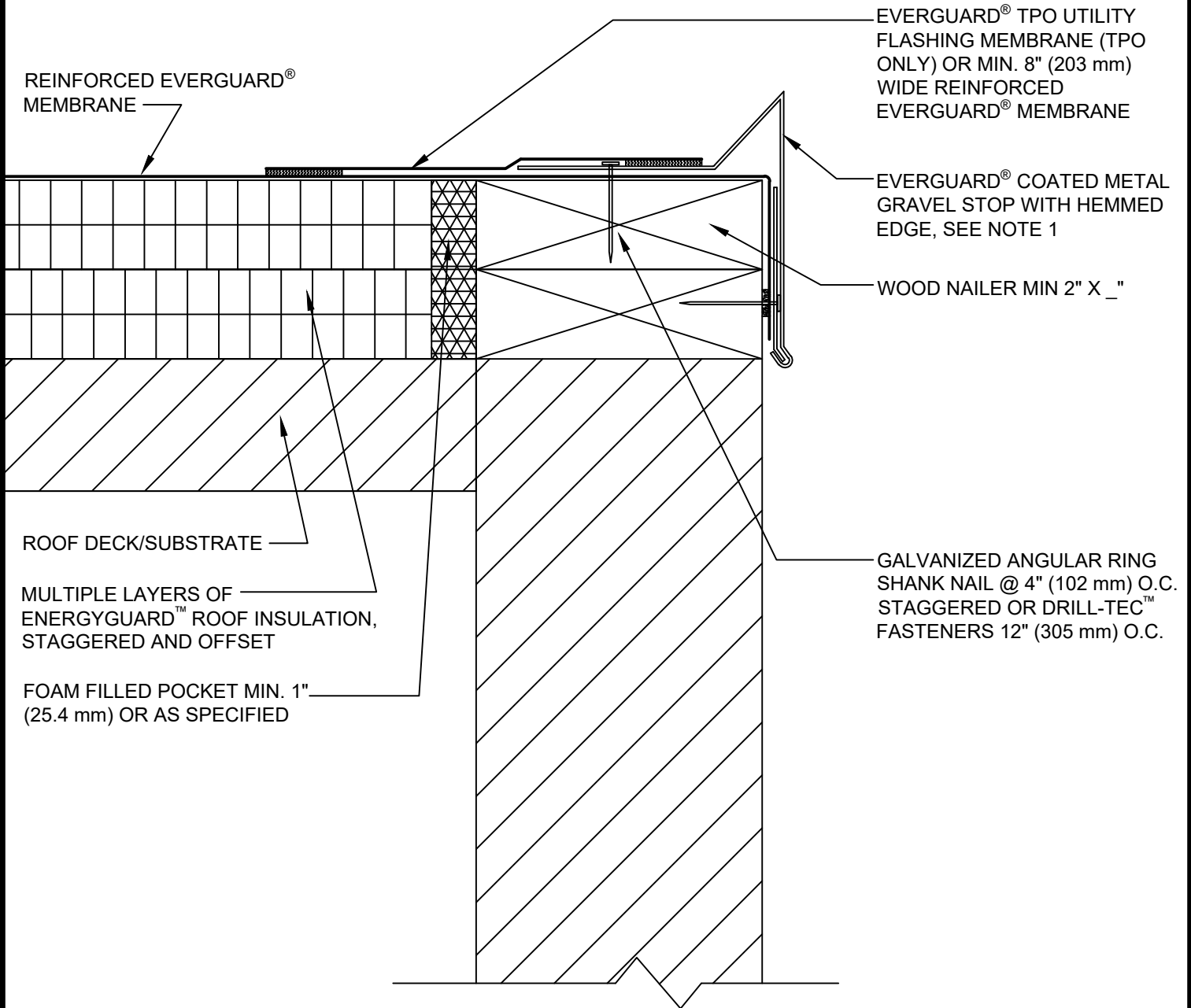




SINGLE-PLY: TPO & PVC 60-80 mil membranes



NOTE:

1. METAL GRAVEL STOP SHOULD BE DESIGNED FOR WIND RESISTANCE IN ACCORDANCE WITH THE APPLICABLE EDITION OF ASCE 7 AND TESTED FOR CAPACITY IN ACCORDANCE WITH THE TEST METHODS IN THE APPLICABLE EDITION OF ANSI/SPRI ES-1.
2. FOR STEEL ROOF DECKS: FILL STEEL DECK FLUTES WITH SPRAY FOAM INSULATION PRIOR TO THE INSTALLATION OF ABOVE DECK INSULATION A MINIMUM OF 12 INCHES (305 mm) FROM FACE OF WALL.
3. AIR SEAL WALL-TO-ROOF DECK INTERFACE.



COATED METAL GRAVEL STOP AT ROOF EDGE

DRAWING #  
**202B**

THIS DETAIL APPLIES TO:  
ADHERED SYSTEMS  
MECHANICALLY ATTACHED SYSTEMS  
RHINO BOND® SYSTEMS

ISSUE / REVISION DATE  
**3/1/21**

SCALE  
N.T.S.

LEGEND

- HEAT-WELDED
- EVERGUARD® WATER-BLOCK