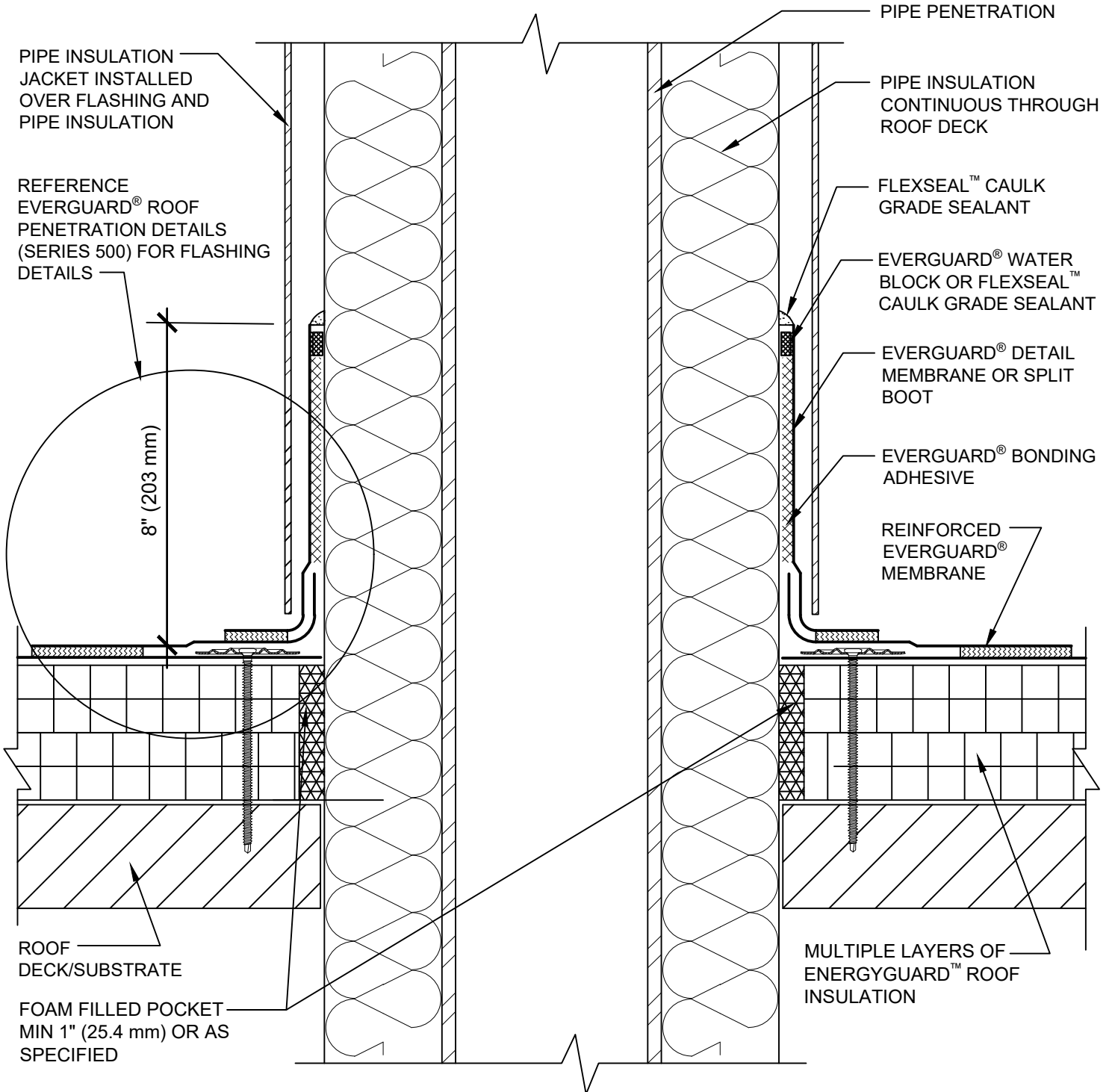


**SINGLE-PLY: TPO & PVC 60-80 mil membranes**



**INSULATED PIPE PENETRATION DETAIL WITH FLASHING TO PIPE INSULATION**



DRAWING #  
**506D**

THIS DETAIL APPLIES TO:  
ADHERED SYSTEMS  
MECHANICALLY ATTACHED SYSTEMS  
RHINO BOND® SYSTEMS

ISSUE / REVISION DATE  
**3/1/21**

SCALE  
N.T.S.

**LEGEND**

- HEAT-WELDED
- EVERGUARD® WATER-BLOCK
- EVERGUARD® BONDING ADHESIVE