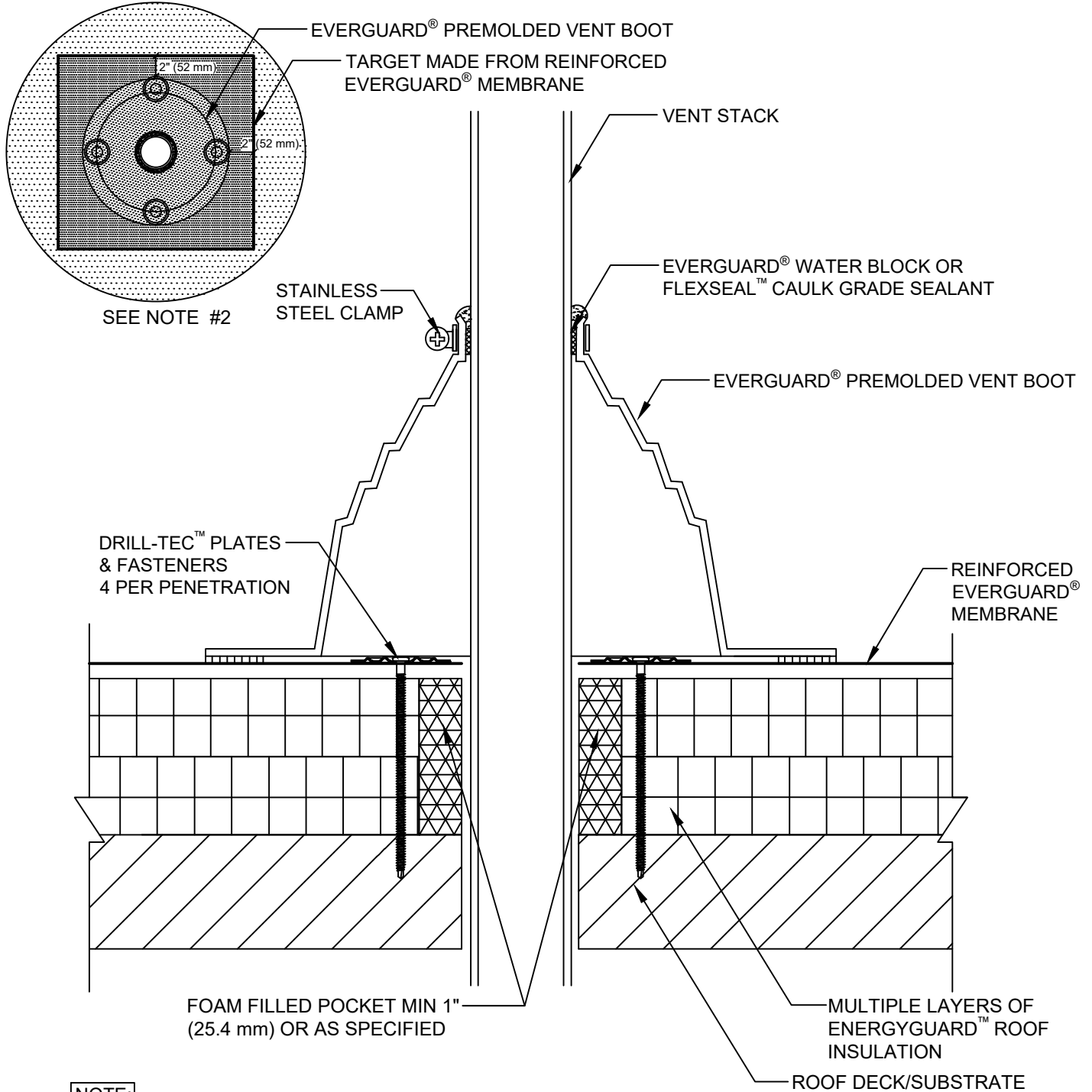




**SINGLE-PLY: TPO & PVC 60-80 mil membranes**

ALTERNATE INSTALLATION  
[12" (305 mm) OR MORE OF INSULATION]



**NOTE:**

1. DO NOT CUT SIDE OF PREMOLDED BOOT. IT MUST BE PULLED OVER VENT PIPE.
2. IF THE PLATES AND FASTENERS INTRUDE INTO BOOT FLANGE AREA, THEN A TARGET MUST FIRST BE INSTALLED OVER PLATES AND FASTENERS BEFORE BOOT INSTALLATION.



**PREMOLDED VENT BOOT FLASHING DETAIL - AMBIENT INTERIOR CONDITIONS**

DRAWING #  
**506B**

THIS DETAIL APPLIES TO:  
ADHERED SYSTEMS  
MECHANICALLY ATTACHED SYSTEMS  
RHINO-BOND® SYSTEMS

ISSUE / REVISION DATE  
**3/1/21**

SCALE  
N.T.S.

**LEGEND**

- HEAT-WELDED
- FLEXSEAL™ CAULK GRADE SEALANT