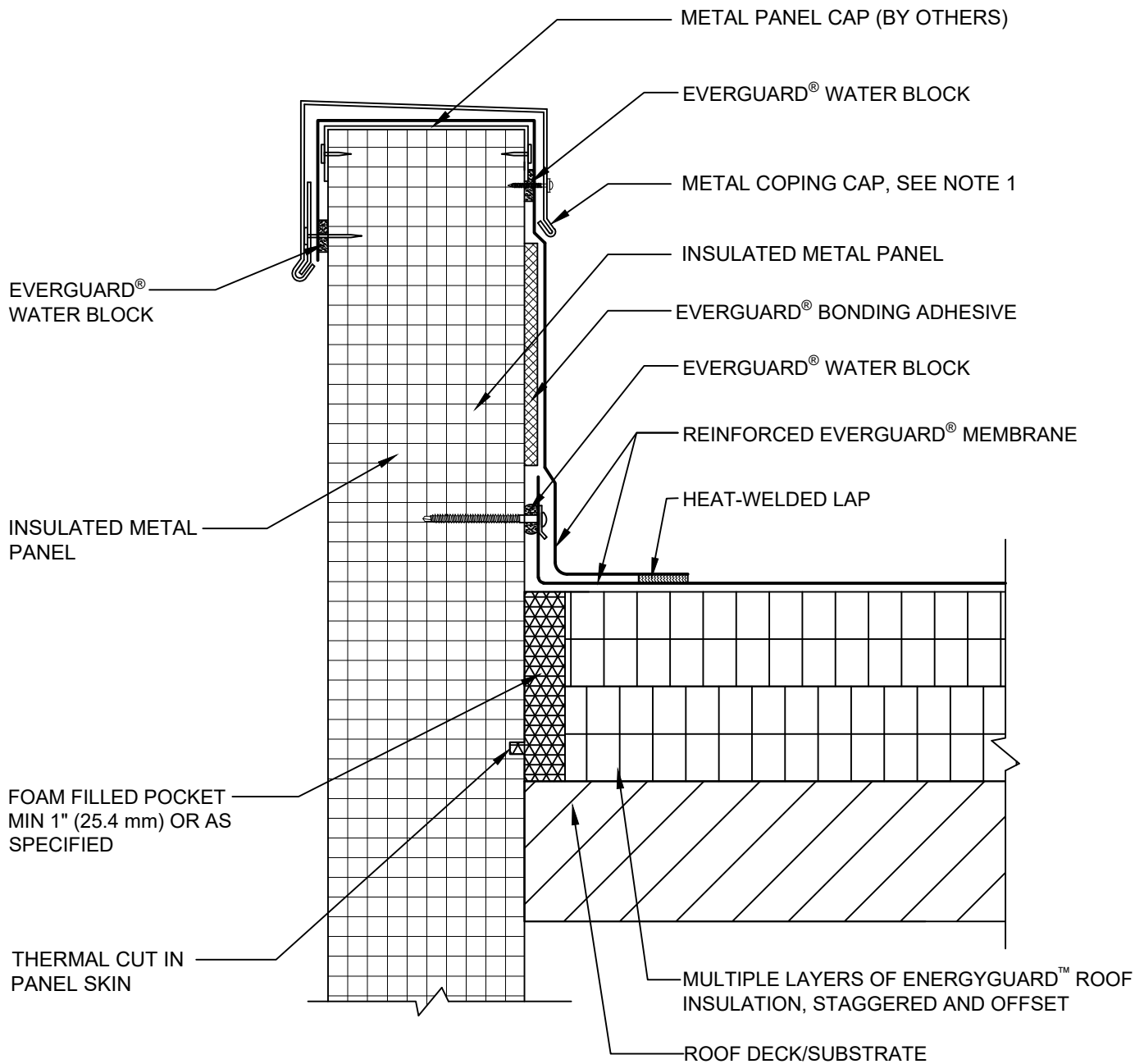


SINGLE-PLY: TPO & PVC 60-80 mil membranes



NOTE:

1. METAL COPING CAP SHOULD BE DESIGNED FOR WIND RESISTANCE IN ACCORDANCE WITH THE APPLICABLE EDITION OF ASCE 7 AND TESTED FOR CAPACITY IN ACCORDANCE WITH THE TEST METHODS IN THE APPLICABLE EDITION OF ANS/SPRI ES-1.
2. THE ATTACHMENT CAPACITY OF THE INSULATED METAL PANELS SHOULD BE VERIFIED.
3. FOR STEEL ROOF DECKS: FILL STEEL DECK FLUTES WITH SPRAY FOAM INSULATION PRIOR TO THE INSTALLATION OF ABOVE DECK INSULATION A MINIMUM OF 12 INCHES (305 mm) FROM FACE OF WALL



INSULATED METAL PANEL WALL WITH COPING CAP

DRAWING #
303B

THIS DETAIL APPLIES TO:
ADHERED SYSTEMS
MECHANICALLY ATTACHED SYSTEMS
RHINOBOND® SYSTEMS

ISSUE / REVISION DATE
3/1/21

SCALE
N.T.S.

LEGEND

- HEAT-WELDED
- EVERGUARD® WATER-BLOCK
- EVERGUARD® BONDING ADHESIVE