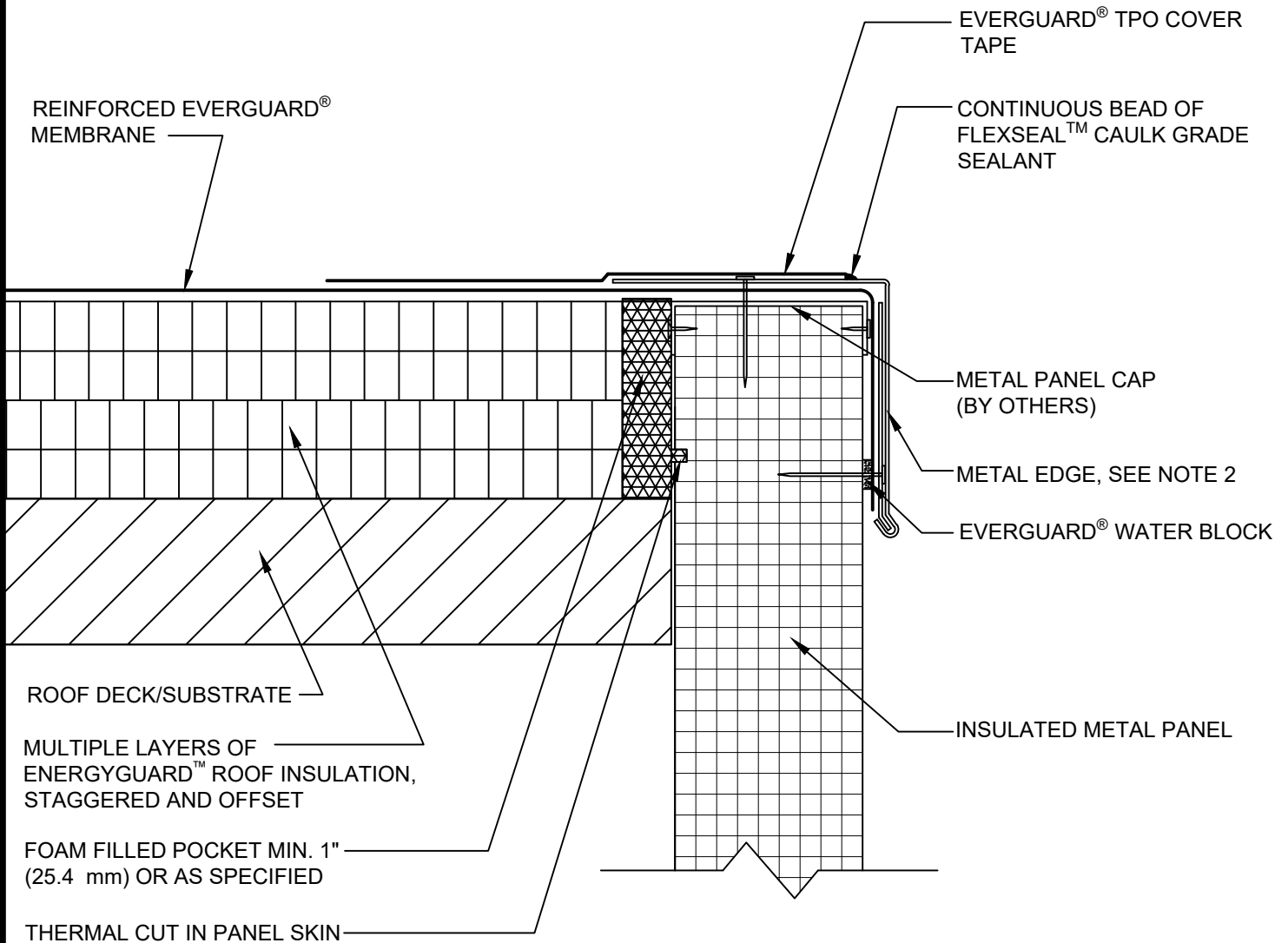


SINGLE-PLY: TPO & PVC 60-80 mil membranes



NOTE:

1. CLEAN METAL AND MEMBRANE WITH EVERGUARD® TPO SEAM CLEANER AND ALLOW TO DRY. ONCE DRY, PRIME METAL AND MEMBRANE WITH EVERGUARD® TPO PRIMER BEFORE INSTALLING EVERGUARD® TPO COVER TAPE.
2. PERIMETER EDGE METAL SHOULD BE DESIGNED FOR WIND RESISTANCE IN ACCORDANCE WITH THE APPLICABLE EDITION OF ASCE 7 AND TESTED FOR CAPACITY IN ACCORDANCE WITH THE TEST METHODS IN THE APPLICABLE EDITION OF ANSI/SPRI ES-1.
3. THE ATTACHMENT CAPACITY OF THE INSULATED METAL PANELS SHOULD BE VERIFIED.
4. FOR STEEL ROOF DECKS: FILL STEEL DECK FLUTES WITH SPRAY FOAM INSULATION PRIOR TO THE INSTALLATION OF ABOVE DECK INSULATION A MINIMUM OF 12 INCHES (305 mm) FROM FACE OF WALL.

METAL ROOF EDGE WITH COVER TAPE DETAIL AT INSULATED METAL PANELS

LEGEND



DRAWING #
203D

THIS DETAIL APPLIES TO:
ADHERED SYSTEMS
MECHANICALLY ATTACHED SYSTEMS
RHINOBOND® SYSTEMS

ISSUE / REVISION DATE
3/1/21

SCALE
N.T.S.

 EVERGUARD® WATER-BLOCK