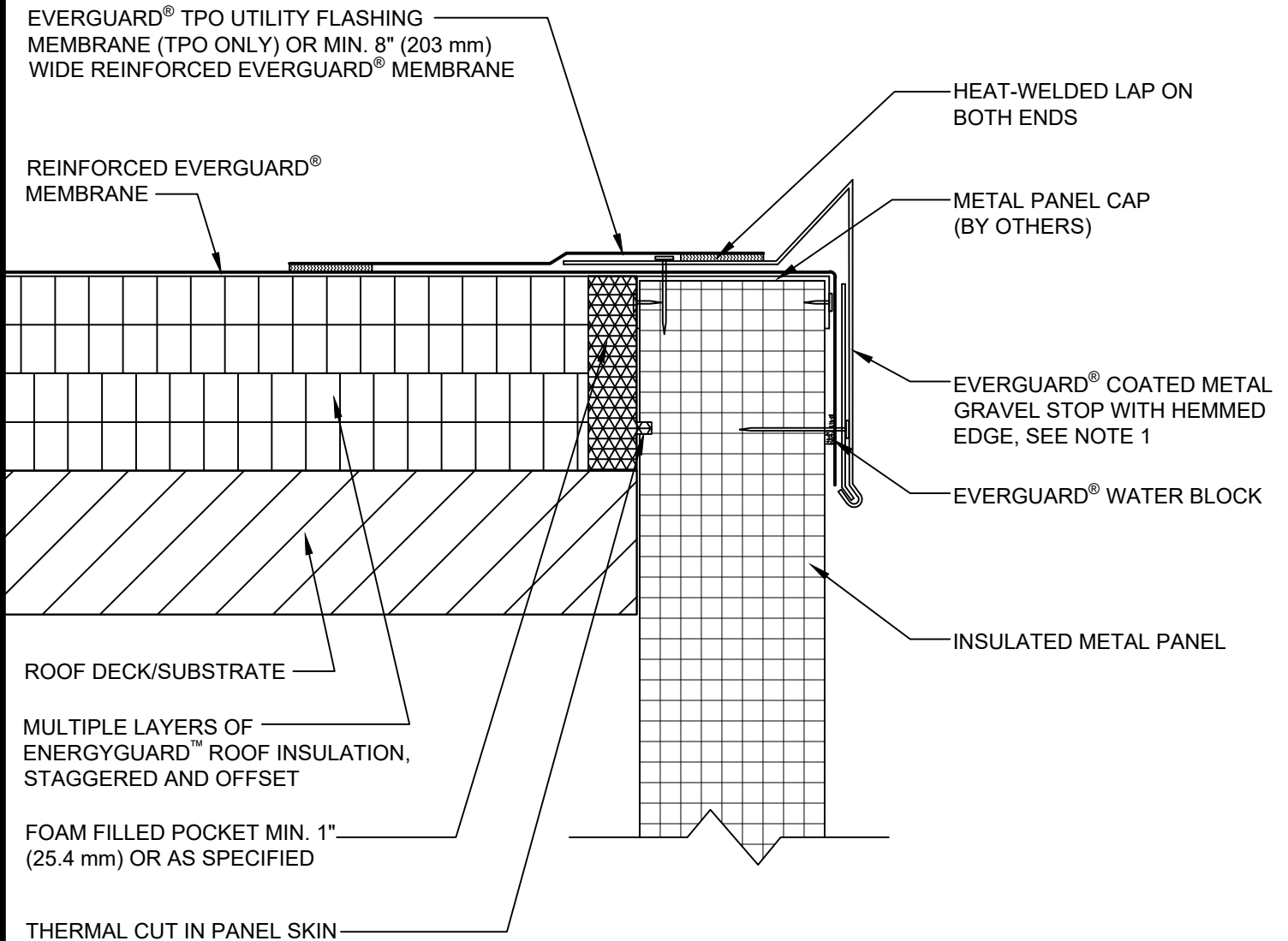


SINGLE-PLY: TPO & PVC 60-80 mil membranes



NOTE:

1. PERIMETER EDGE METAL SHOULD BE DESIGNED FOR WIND RESISTANCE IN ACCORDANCE WITH THE APPLICABLE EDITION OF ASCE 7 AND TESTED FOR CAPACITY IN ACCORDANCE WITH THE TEST METHODS IN THE APPLICABLE EDITION OF ANSI/SPRI ES-1.
2. THE ATTACHMENT CAPACITY OF THE INSULATED METAL PANELS SHOULD BE VERIFIED.
3. FOR STEEL ROOF DECKS: FILL STEEL DECK FLUTES WITH SPRAY FOAM INSULATION PRIOR TO THE INSTALLATION OF ABOVE DECK INSULATION A MINIMUM OF 12 INCHES (305 mm) FROM FACE OF WALL.



COATED METAL GRAVEL STOP AT ROOF EDGE AT INSULATED METAL PANELS

DRAWING #
202D

THIS DETAIL APPLIES TO:
ADHERED SYSTEMS
MECHANICALLY ATTACHED SYSTEMS
RHINOBOND® SYSTEMS

ISSUE / REVISION DATE
3/1/21

SCALE
N.T.S.

LEGEND

-  HEAT-WELDED
-  EVERGUARD® WATER-BLOCK