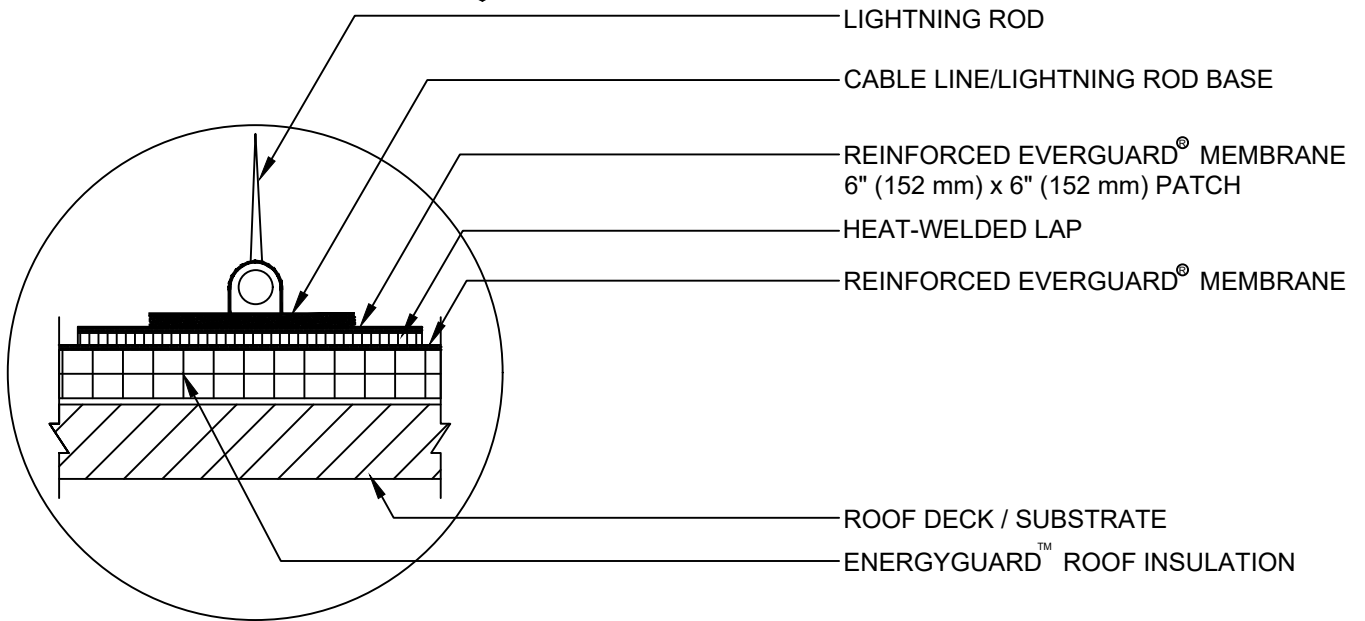
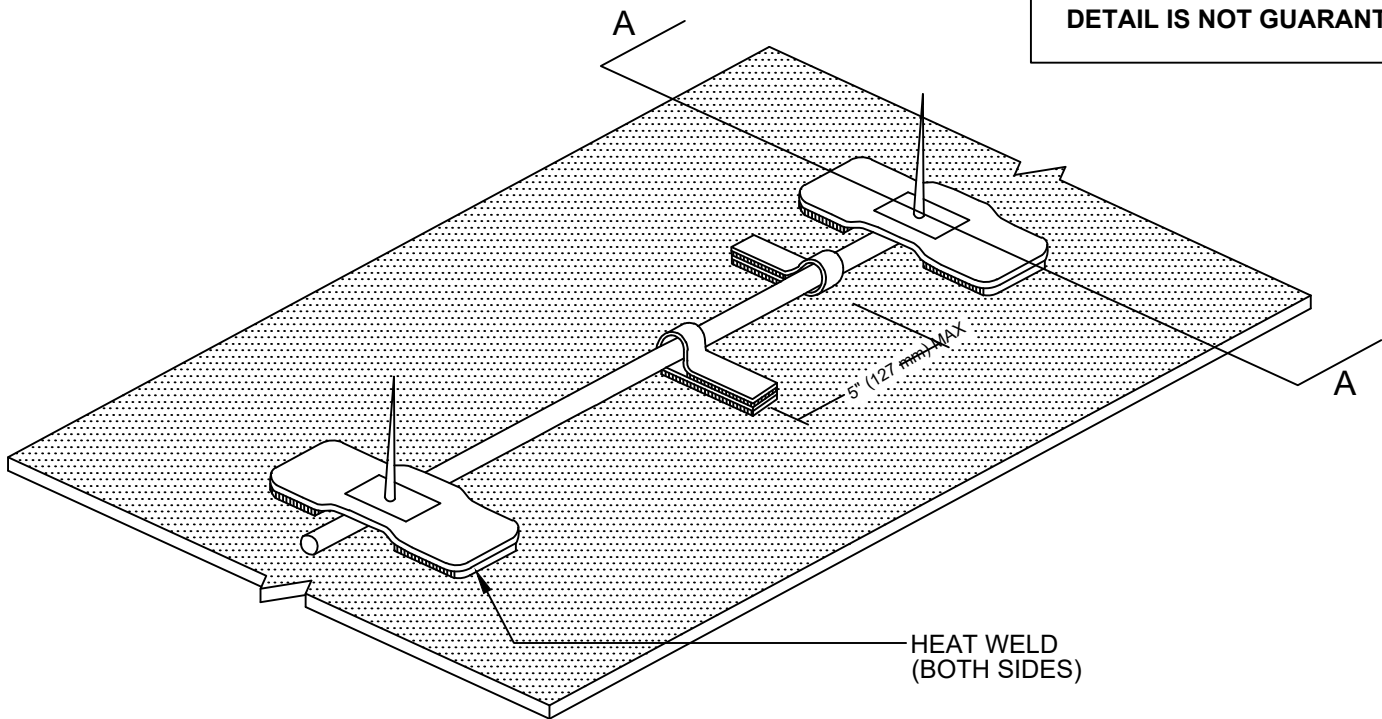


DETAIL IS NOT GUARANTEED



SECTION A

NOTE:

1. APPLY EVERGUARD® TPO CUT EDGE SEALANT TO ALL CUT REINFORCED TPO EDGES (REFER TO EVERGUARD® DETAIL 115).



www.gaf.com
1 Campus Drive,
Parsippany, NJ 07054

EverGuard
SINGLE-PLY ROOFING SYSTEMS
ROOF PENETRATION
SERIES

DRAWING #
605

SCALE
N.T.S.

**LIGHTNING PROTECTION TERMINAL -
ROOF MOUNT DETAIL**

THIS DETAIL APPLIES TO:
ALL SYSTEMS

REVISION DATE
8-28-17