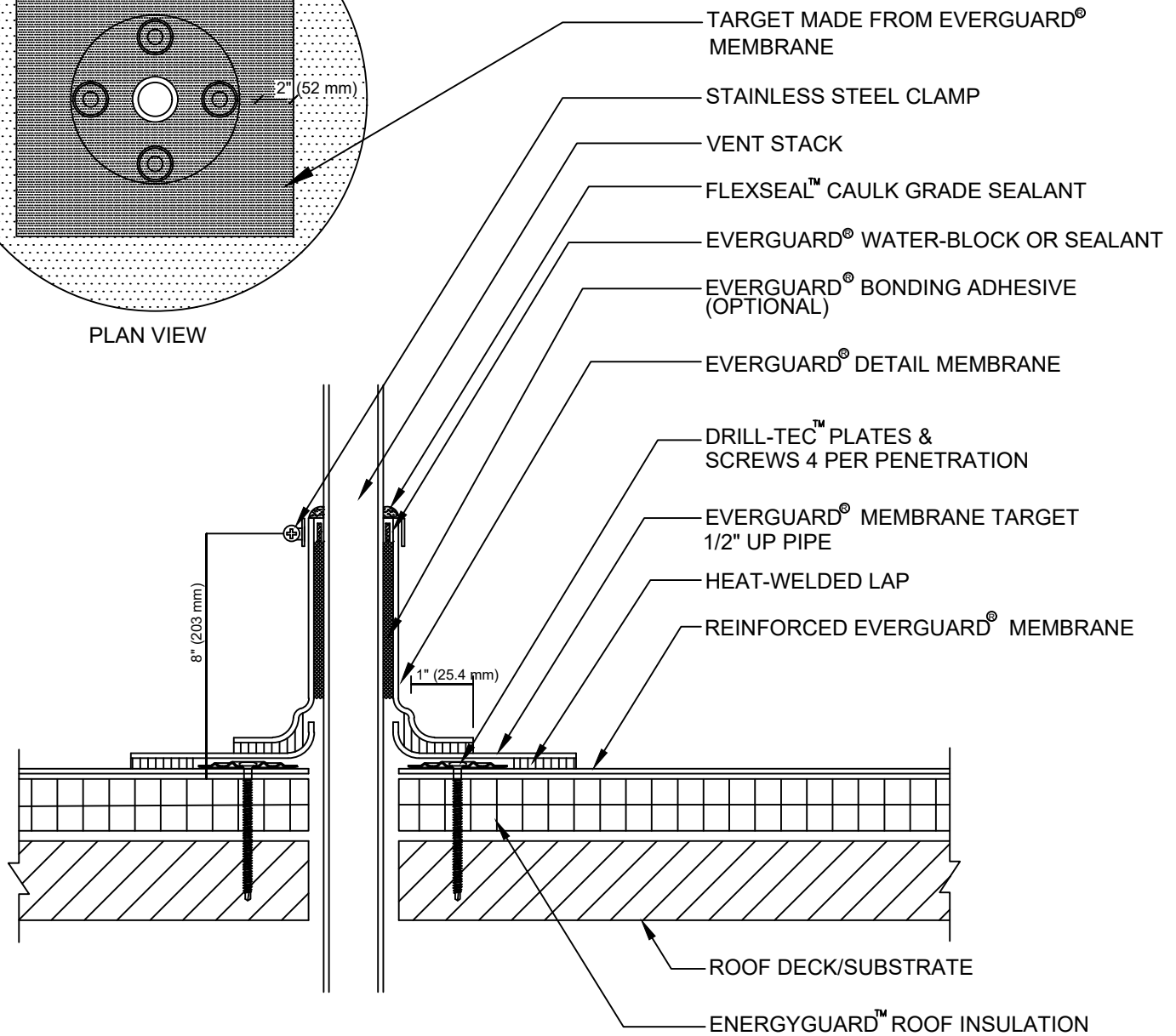


PLAN VIEW



**NOTE:**

1. FOR INSULATION THICKNESS GREATER THAN 8" (203 mm), A HARD BOARD IS REQUIRED ON MECHANICAL SYSTEMS ONLY.
2. APPLY HEAT TO UNREINFORCED DETAIL MEMBRANE AND FORM BY HAND PRIOR TO HOT AIR WELDING.
3. APPLY EVERGUARD® TPO CUT EDGE SEALANT TO ALL CUT REINFORCED TPO EDGES (REFER TO EVERGUARD® DETAIL 115).



**EverGuard**  
SINGLE-PLY ROOFING SYSTEMS  
ROOF PENETRATION  
SERIES

DRAWING #  
**507**

SCALE  
N.T.S.

**FIELD-WRAPPED PENETRATION  
FLASHING DETAIL**

THIS DETAIL APPLIES TO:

**ALL SYSTEMS**

REVISION DATE  
12-12-17