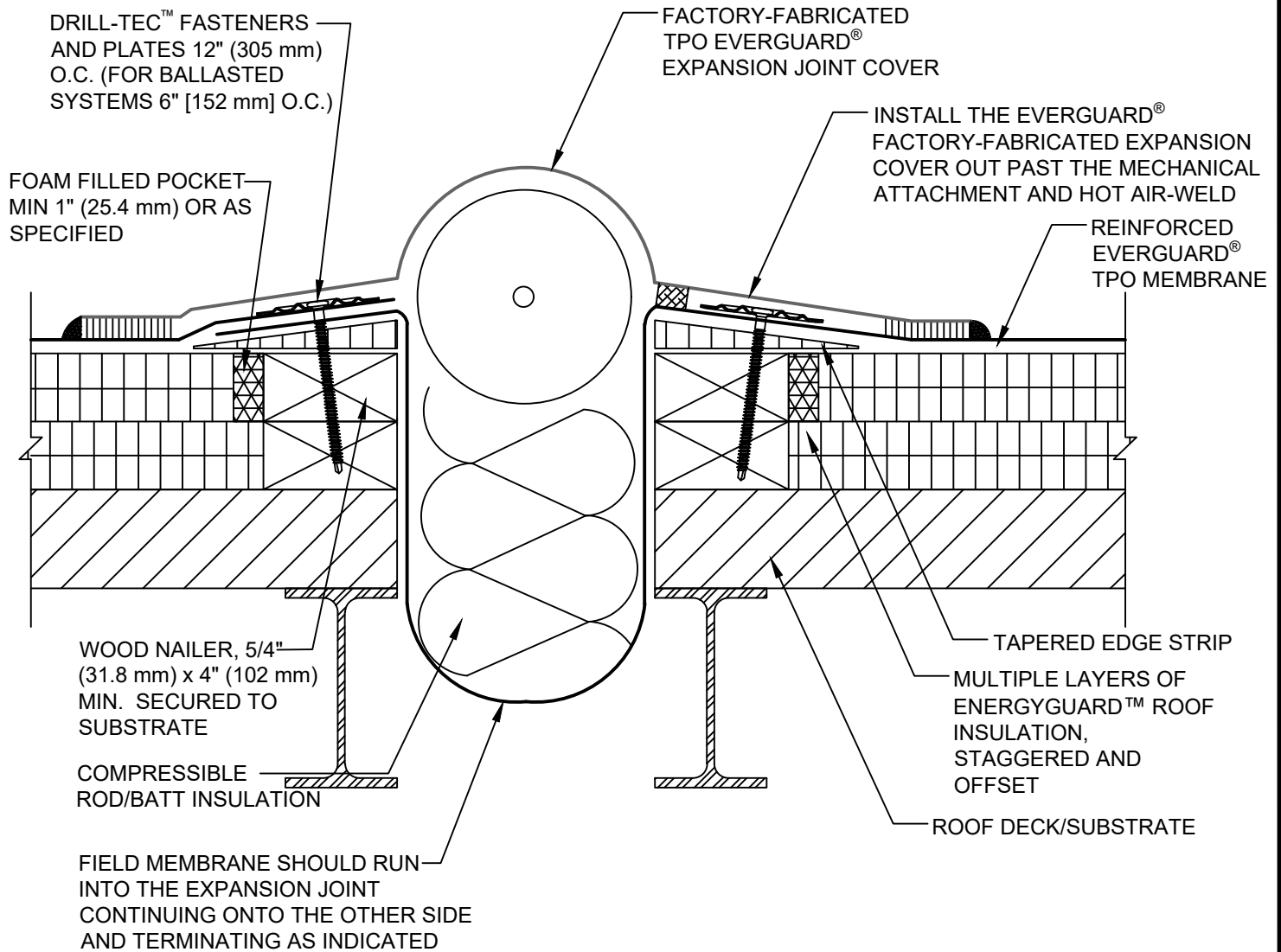




SINGLE-PLY: TPO 60-80 mil membranes



NOTE:

1. SEE EVERGUARD® DETAIL 330 FOR LAP APPLICATION.



**FACTORY FABRICATED EXPANSION JOINT DETAIL
- FLAT TYPE**

DRAWING #
401D

THIS DETAIL APPLIES TO:
ADHERED SYSTEMS
MECHANICALLY ATTACHED SYSTEMS
RHINO-BOND® SYSTEMS

ISSUE / REVISION DATE
11/30/20

SCALE
N.T.S.

LEGEND

- HEAT-WELDED
- TACK WELD INTERMITTENTLY ON BOTH CURBS TO HOLD IN PLACE IF NEEDED