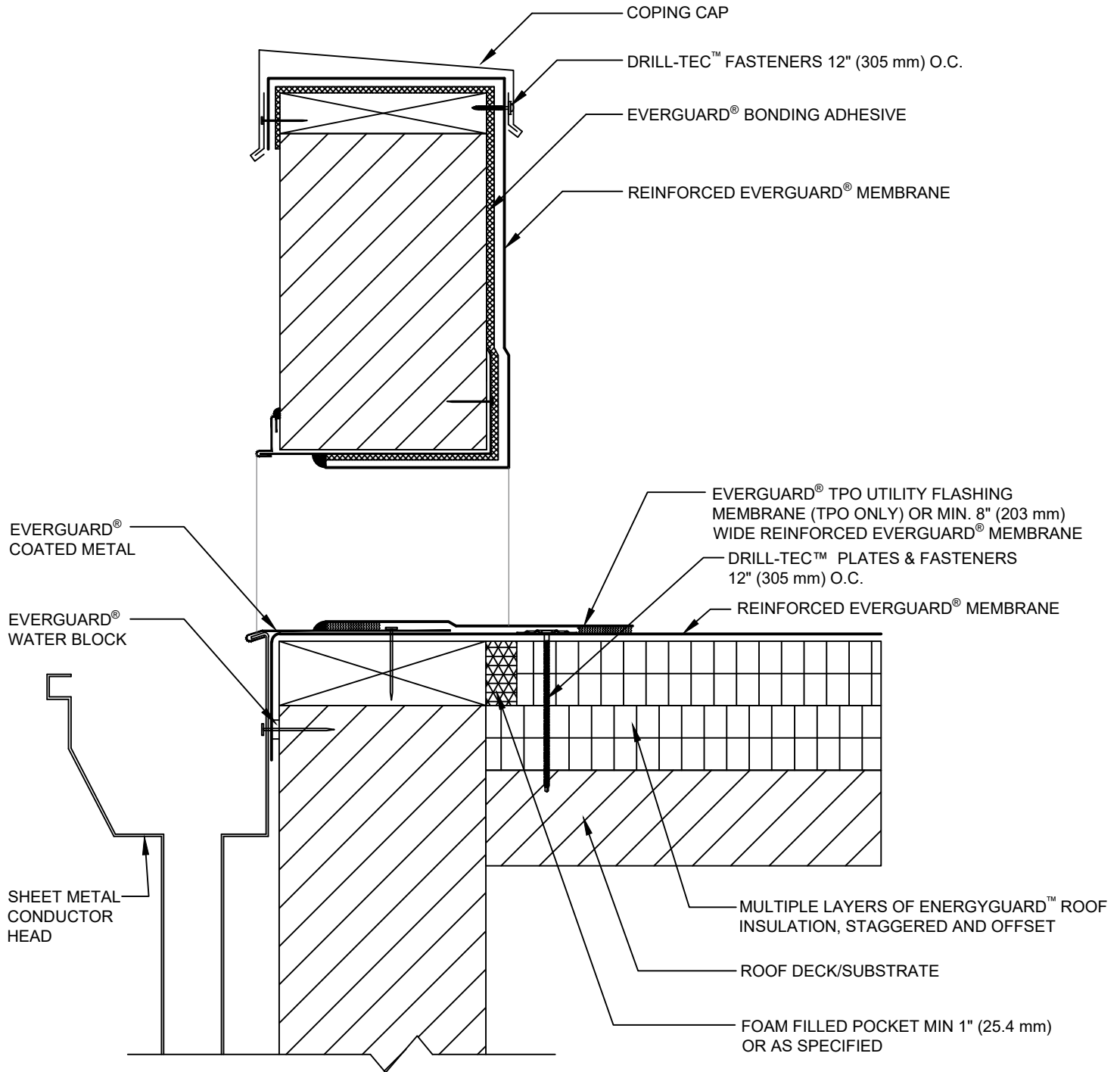




SINGLE-PLY: TPO & PVC 60-80 mil membranes



NOTE:

1. FOR ADHERED SYSTEMS OVER STEEL DECKS, THE FIRST LAYER OF INSULATION IS MECHANICALLY ATTACHED. FLUTES MAY BE FILLED WITH CLOSED-CELL SPRAY POLYURETHANE FOAM AT WALLS AND PENETRATIONS.
2. GUARANTEE COVERAGE FOR RHINOBOND® ATTACHMENT IS LIMITED TO BUILDINGS WITH INTERIOR TEMPERATURES GENERALLY GREATER THAN 35°F(1.7°C).



THROUGH WALL SCUPPER WITH COATED METAL

DRAWING #
324B

THIS DETAIL APPLIES TO:
ADHERED SYSTEMS
MECHANICALLY ATTACHED SYSTEMS
RHINOBOND® SYSTEMS

ISSUE / REVISION DATE
11/30/20

SCALE
N.T.S.

LEGEND	
	HEAT-WELDED
	FLEXSEAL™ CAULK GRADE SEALANT