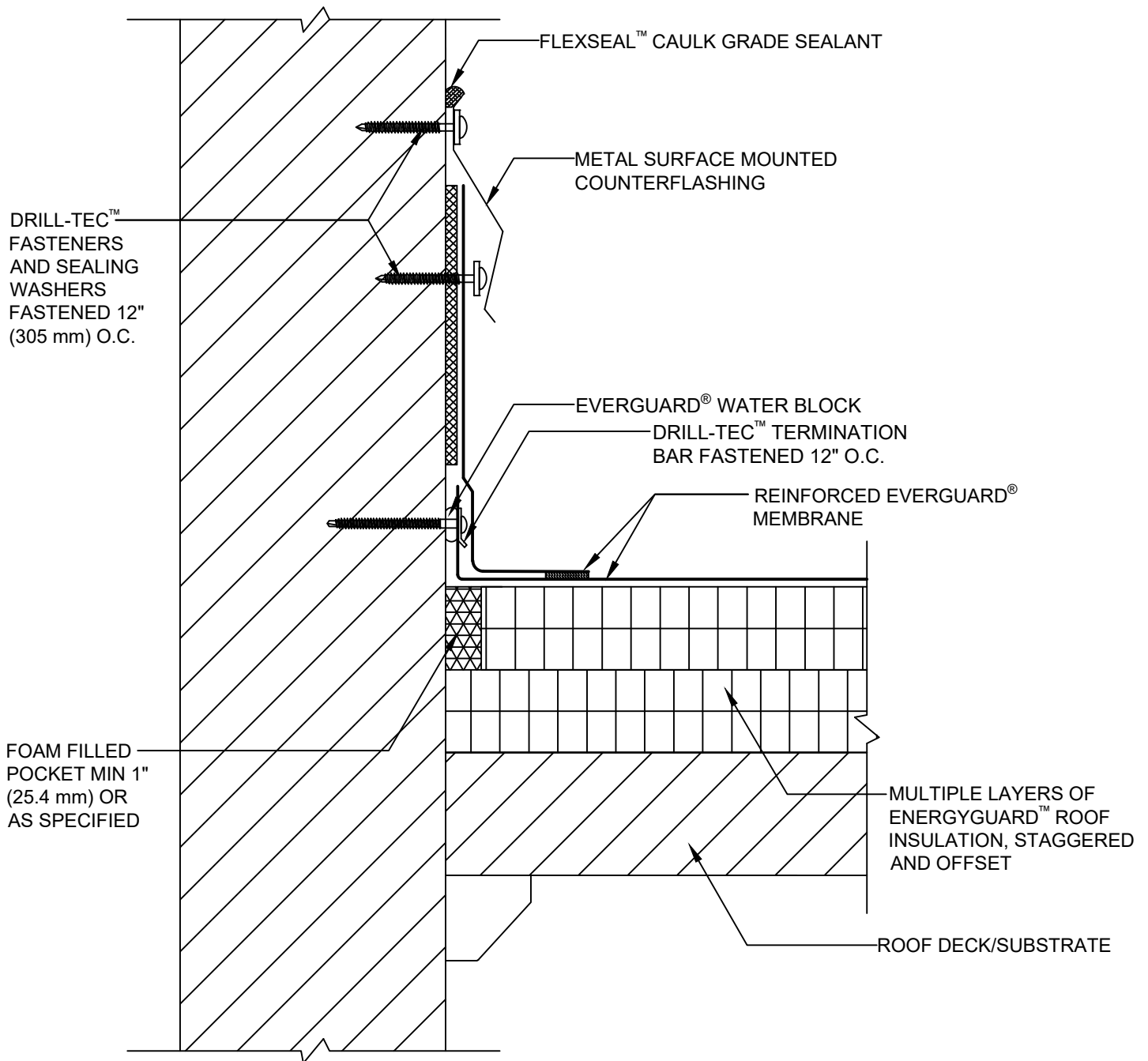


**SINGLE-PLY: TPO & PVC 60-80 mil membranes**



**NOTE:**

1. EXPOSED WALLS/CURBS MUST BE WATERPROOFED AND MAINTAINED ABOVE THE BASE FLASHING IN ORDER FOR ANY SURFACE-MOUNTED TERMINATION TO BE EFFECTIVE.
2. FOR ADHERED SYSTEMS OVER STEEL DECKS, THE FIRST LAYER OF INSULATION IS MECHANICALLY ATTACHED. FLUTES MAY BE FILLED WITH CLOSED-CELL SPRAY POLYURETHANE FOAM AT WALLS AND PENETRATIONS.
3. GUARANTEE COVERAGE FOR RHINOBOND® ATTACHMENT IS LIMITED TO BUILDINGS WITH INTERIOR TEMPERATURES GENERALLY GREATER THAN 35°F(1.7°C).



**WALL FLASHING WITH COUNTERFLASHING**

DRAWING #  
**301B**

THIS DETAIL APPLIES TO:  
ADHERED SYSTEMS  
MECHANICALLY ATTACHED SYSTEMS  
RHINOBOND® SYSTEMS

ISSUE / REVISION DATE  
**11/30/20**

SCALE  
N.T.S.

**LEGEND**

- HEAT-WELDED
- EVERGUARD® BONDING ADHESIVE  
-OPTIONAL UP TO 30" (762 mm) FLASHING HEIGHT