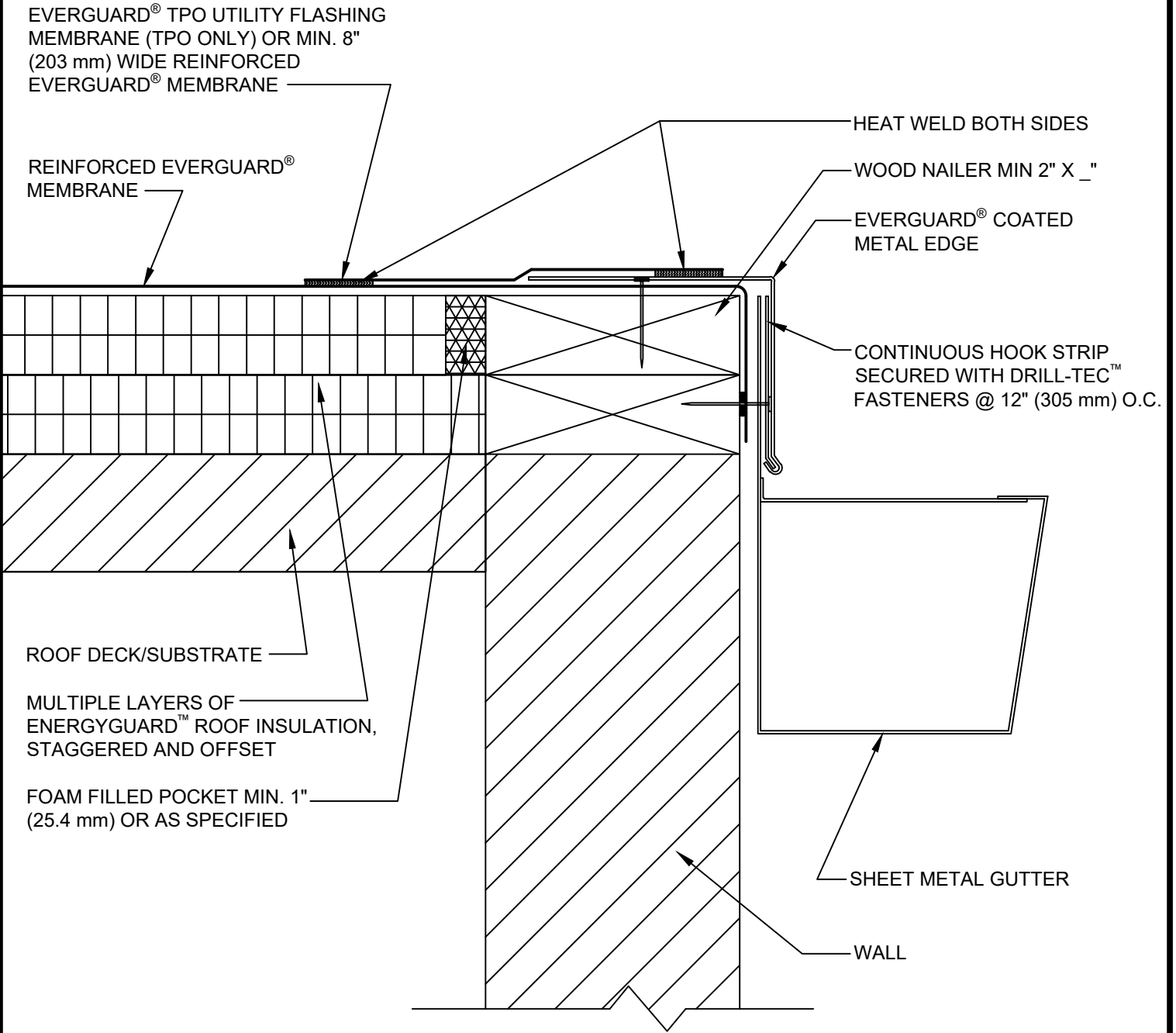


SINGLE-PLY: TPO & PVC 60-80 mil membranes



GUTTER WITH COATED METAL ROOF EDGE

DRAWING #
211B

THIS DETAIL APPLIES TO:
ADHERED SYSTEMS
MECHANICALLY ATTACHED SYSTEMS
RHINO-BOND® SYSTEMS

ISSUE / REVISION DATE
11/30/20

SCALE
N.T.S.

LEGEND	
	HEAT-WELDED
	FLEXSEAL™ CAULK-GRADE SEALANT