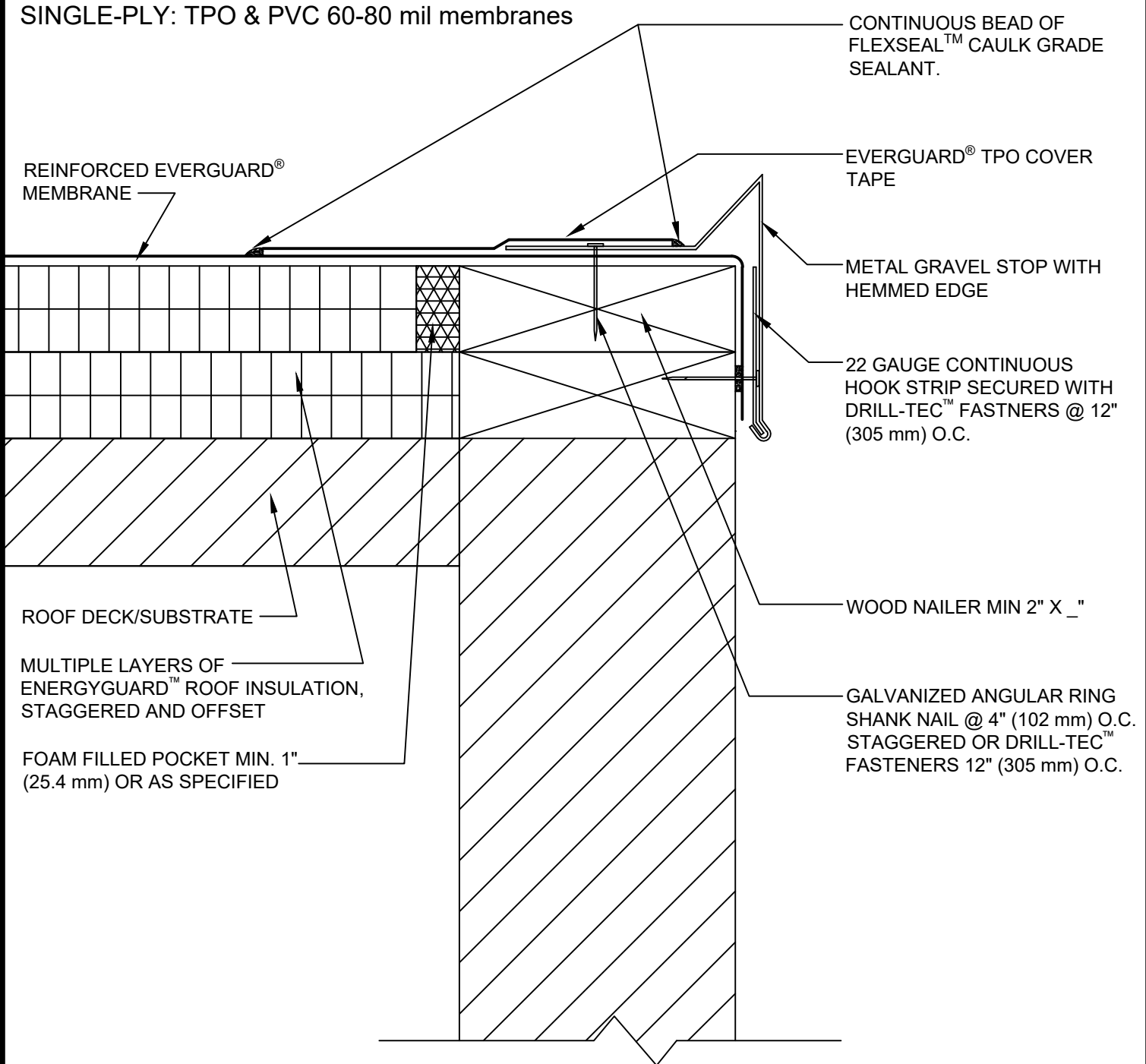




SINGLE-PLY: TPO & PVC 60-80 mil membranes



CONTINUOUS BEAD OF FLEXSEAL™ CAULK GRADE SEALANT.

EVERGUARD® TPO COVER TAPE

METAL GRAVEL STOP WITH HEMMED EDGE

22 GAUGE CONTINUOUS HOOK STRIP SECURED WITH DRILL-TEC™ FASTNERS @ 12" (305 mm) O.C.

WOOD NAILER MIN 2" X 1/2"

GALVANIZED ANGULAR RING SHANK NAIL @ 4" (102 mm) O.C. STAGGERED OR DRILL-TEC™ FASTENERS 12" (305 mm) O.C.

REINFORCED EVERGUARD® MEMBRANE

ROOF DECK/SUBSTRATE

MULTIPLE LAYERS OF ENERGYGUARD™ ROOF INSULATION, STAGGERED AND OFFSET

FOAM FILLED POCKET MIN. 1" (25.4 mm) OR AS SPECIFIED

NOTE:

1. CLEAN METAL AND MEMBRANE WITH EVERGUARD® TPO SEAM CLEANER AND ALLOW TO DRY. ONCE DRY, PRIME METAL AND MEMBRANE WITH EVERGUARD® TPO PRIMER BEFORE INSTALLING EVERGUARD® TPO COVER TAPE.



METAL GRAVEL STOP WITH HEMMED EDGE

LEGEND

DRAWING #
202C

THIS DETAIL APPLIES TO:
ADHERED SYSTEMS
MECHANICALLY ATTACHED SYSTEMS
RHINOBOND® SYSTEMS

ISSUE / REVISION DATE
11/30/20

SCALE
N.T.S.

 EVERGUARD® WATER-BLOCK