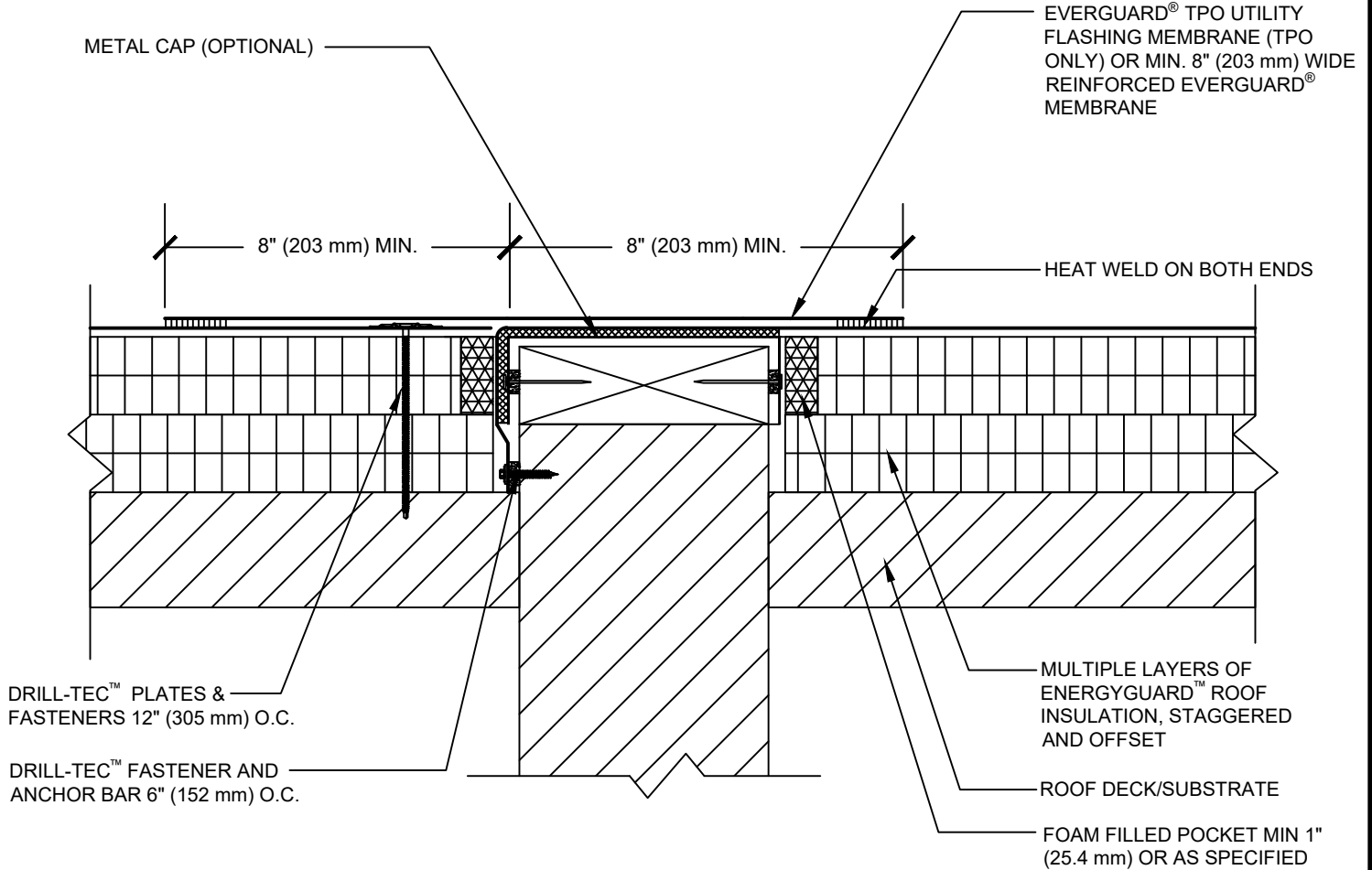




SINGLE-PLY: TPO & PVC 60-80 mil membranes



WARM

COLD

NOTE:

1. FOR ADHERED SYSTEMS OVER STEEL DECKS, THE FIRST LAYER OF INSULATION IS MECHANICALLY ATTACHED. FLUTES MAY BE FILLED WITH CLOSED-CELL SPRAY POLYURETHANE FOAM AT WALLS AND PENETRATIONS.
2. GUARANTEE COVERAGE FOR RHINO BOND® ATTACHMENT IS LIMITED TO BUILDINGS WITH INTERIOR TEMPERATURES GENERALLY GREATER THAN 35°F(1.7°C).



COLD TO WARM TRANSITION TIE-IN


DRAWING #
130

THIS DETAIL APPLIES TO:
ADHERED SYSTEMS
MECHANICALLY ATTACHED SYSTEMS
RHINO BOND® SYSTEMS

ISSUE / REVISION DATE
11/30/20

SCALE
N.T.S.

LEGEND

-  EVERGUARD® WATER BLOCK
-  EVERGUARD® BONDING ADHESIVE