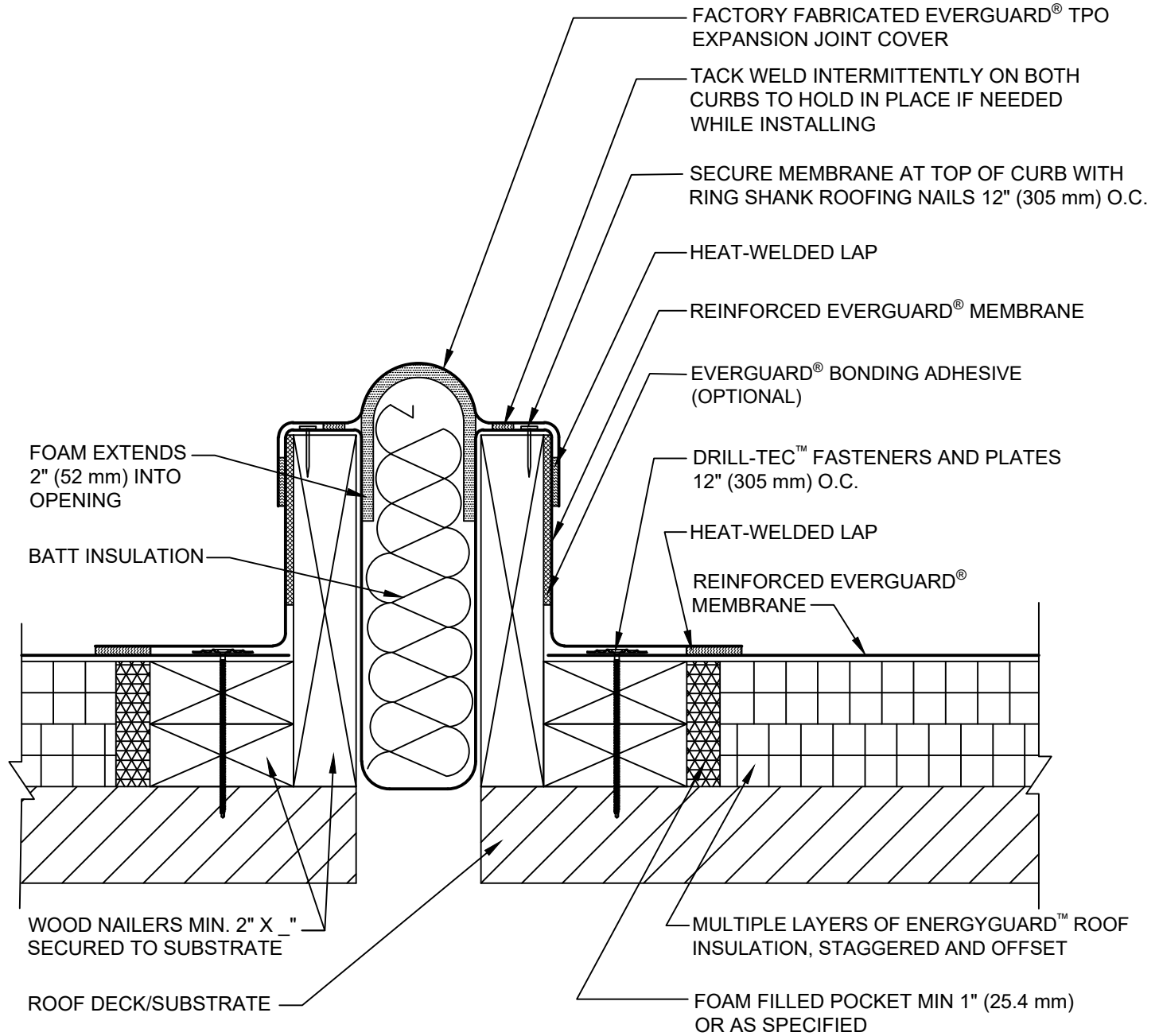


SINGLE-PLY: TPO & PVC 60-80 mil membranes



NOTE:

1. SEE EVERGUARD® DETAIL 330 FOR LAP APPLICATION.
2. FOR STEEL ROOF DECKS: FILL STEEL DECK FLUTES WITH SPRAY FOAM INSULATION PRIOR TO THE INSTALLATION OF ABOVE DECK INSULATION A MINIMUM OF 12 INCHES (305 mm) FROM EDGE OF EXPANSION JOINT.



FACTORY FABRICATED EXPANSION JOINT - CURB TYPE

DRAWING #
402E

THIS DETAIL APPLIES TO:
ADHERED SYSTEMS
MECHANICALLY ATTACHED SYSTEMS
RHINO-BOND® SYSTEMS

ISSUE / REVISION DATE
3/8/21

SCALE
N.T.S.

LEGEND

- HEAT-WELDED
- EVERGUARD® WATER-BLOCK
- EVERGUARD® BONDING ADHESIVE