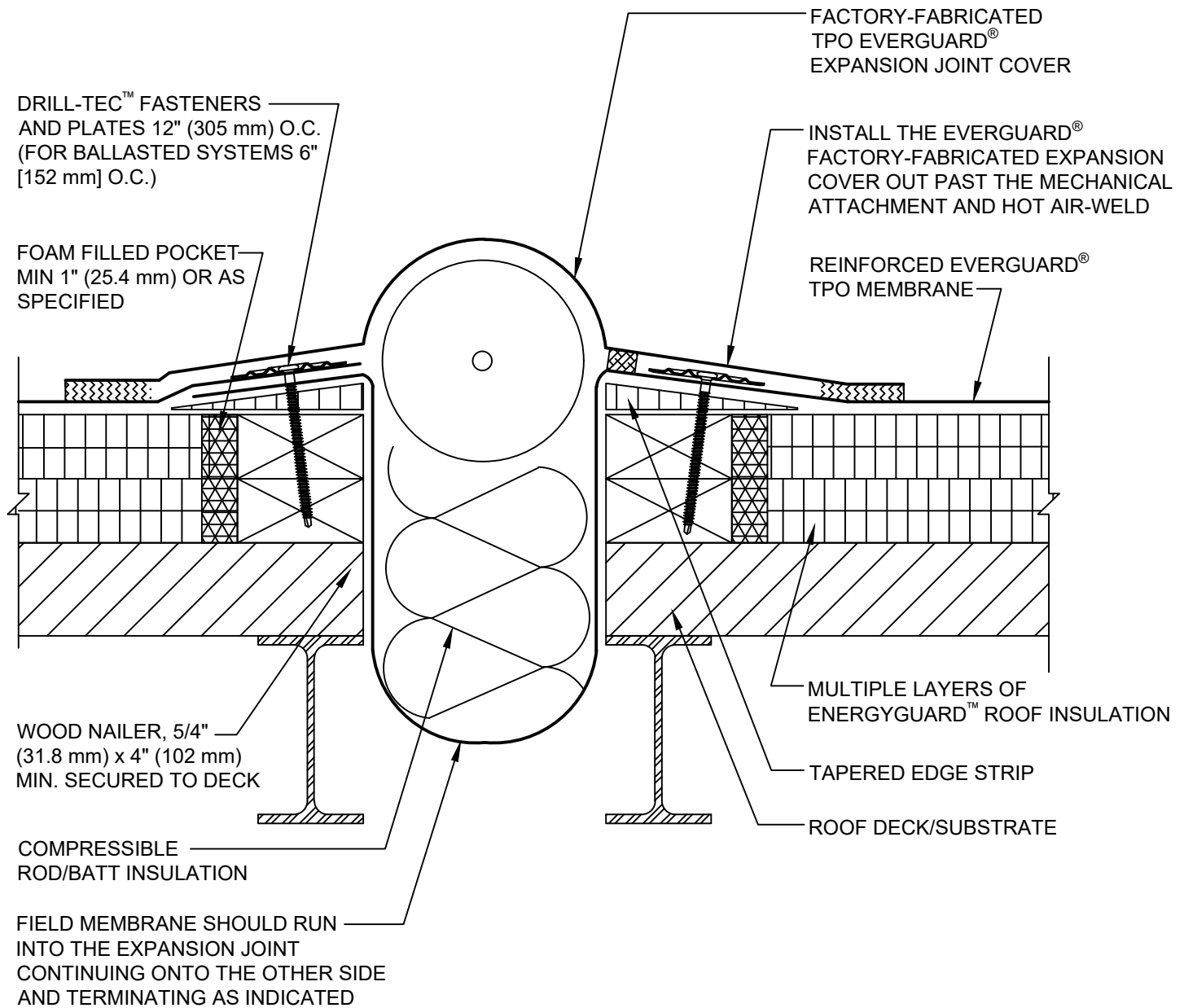




**SINGLE-PLY: TPO 60-80 mil membranes**



**NOTE:**

1. SEE EVERGUARD® DETAIL 330 FOR LAP APPLICATION.
2. FOR STEEL ROOF DECKS: FILL STEEL DECK FLUTES WITH SPRAY FOAM INSULATION PRIOR TO THE INSTALLATION OF ABOVE DECK INSULATION A MINIMUM OF 12 INCHES (305 mm) FROM EDGE OF EXPANSION JOINT.



**FACTORY FABRICATED EXPANSION JOINT DETAIL  
- FLAT TYPE**

DRAWING #  
**401D**

THIS DETAIL APPLIES TO:  
ADHERED SYSTEMS  
MECHANICALLY ATTACHED SYSTEMS  
RHINO-BOND® SYSTEMS

ISSUE / REVISION DATE  
**3/1/21**

SCALE  
N.T.S.

**LEGEND**

- HEAT-WELDED
- TACK WELD INTERMITTENTLY ON BOTH CURBS TO HOLD IN PLACE IF NEEDED