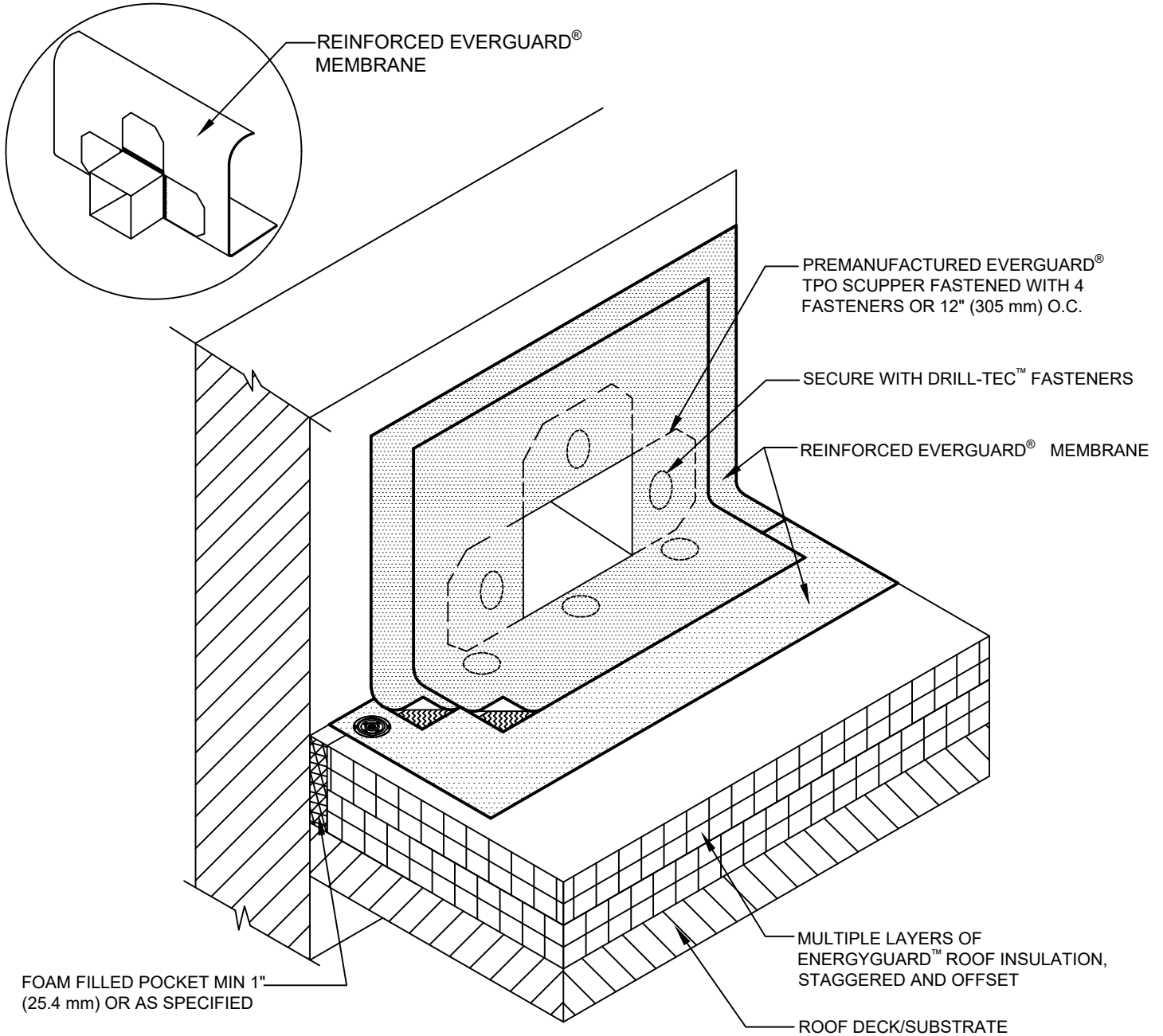


SINGLE-PLY: TPO & PVC 60-80 mil membranes

REAR VIEW OF SCUPPER



FOAM FILLED POCKET MIN 1" (25.4 mm) OR AS SPECIFIED

NOTE:

1. SCUPPER MUST ALSO BE SEALED ON OUTSIDE WALL.
2. FOR ALTERNATE BASE ATTACHMENT, REFER TO DETAIL 307.
3. STEEL ROOF DECKS: FILL STEEL DECK FLUTES WITH SPRAY FOAM INSULATION PRIOR TO THE INSTALLATION OF ABOVE DECK INSULATION A MINIMUM OF 12 INCHES (305 mm) FROM FACE OF WALL.



THROUGH WALL SCUPPER - PREFABRICATED DETAIL

LEGEND

DRAWING #	THIS DETAIL APPLIES TO:	ISSUE / REVISION DATE	SCALE
324D	ADHERED SYSTEMS MECHANICALLY ATTACHED SYSTEMS RHINOBOND® SYSTEMS	3/15/21	N.T.S.

