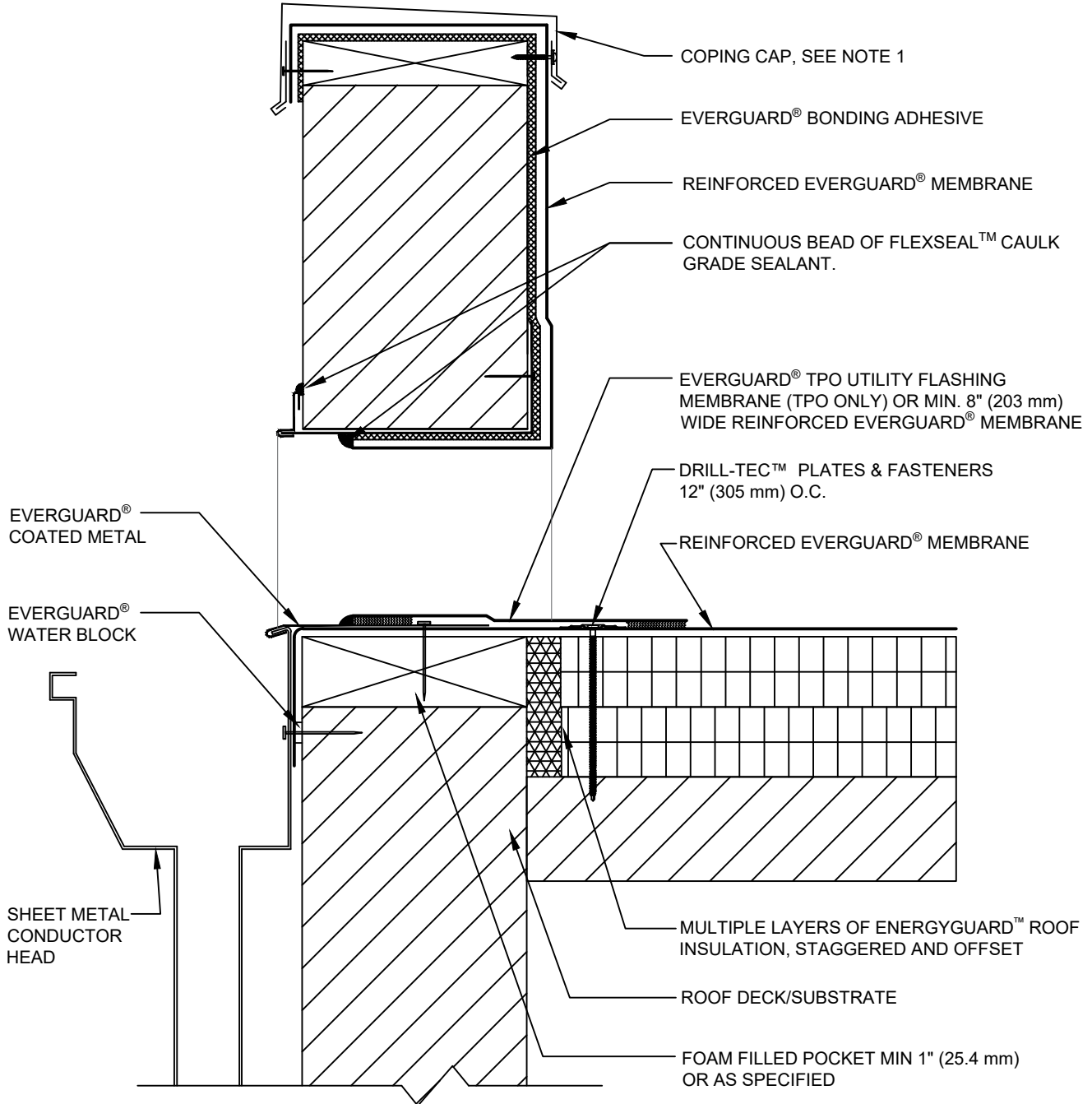


**SINGLE-PLY: TPO & PVC 60-80 mil membranes**



**NOTE:**

1. METAL EDGE SHOULD BE DESIGNED FOR WIND RESISTANCE IN ACCORDANCE WITH THE APPLICABLE EDITION OF ASCE 7 AND TESTED FOR CAPACITY IN ACCORDANCE WITH THE TEST METHODS IN THE APPLICABLE EDITION OF ANSI/SPRI ES-1. FOR
2. STEEL ROOF DECKS: FILL STEEL DECK FLUTES WITH SPRAY FOAM INSULATION PRIOR TO THE INSTALLATION OF ABOVE DECK INSULATION A MINIMUM OF 12 INCHES (305 mm) FROM FACE OF WALL.



**THROUGH WALL SCUPPER WITH COATED METAL**

DRAWING #  
**324B**

THIS DETAIL APPLIES TO:  
ADHERED SYSTEMS  
MECHANICALLY ATTACHED SYSTEMS  
RHINOBOND® SYSTEMS

ISSUE / REVISION DATE  
**3/1/21**

SCALE  
N.T.S.

**LEGEND**

- HEAT-WELDED
- FLEXSEAL™ CAULK GRADE SEALANT