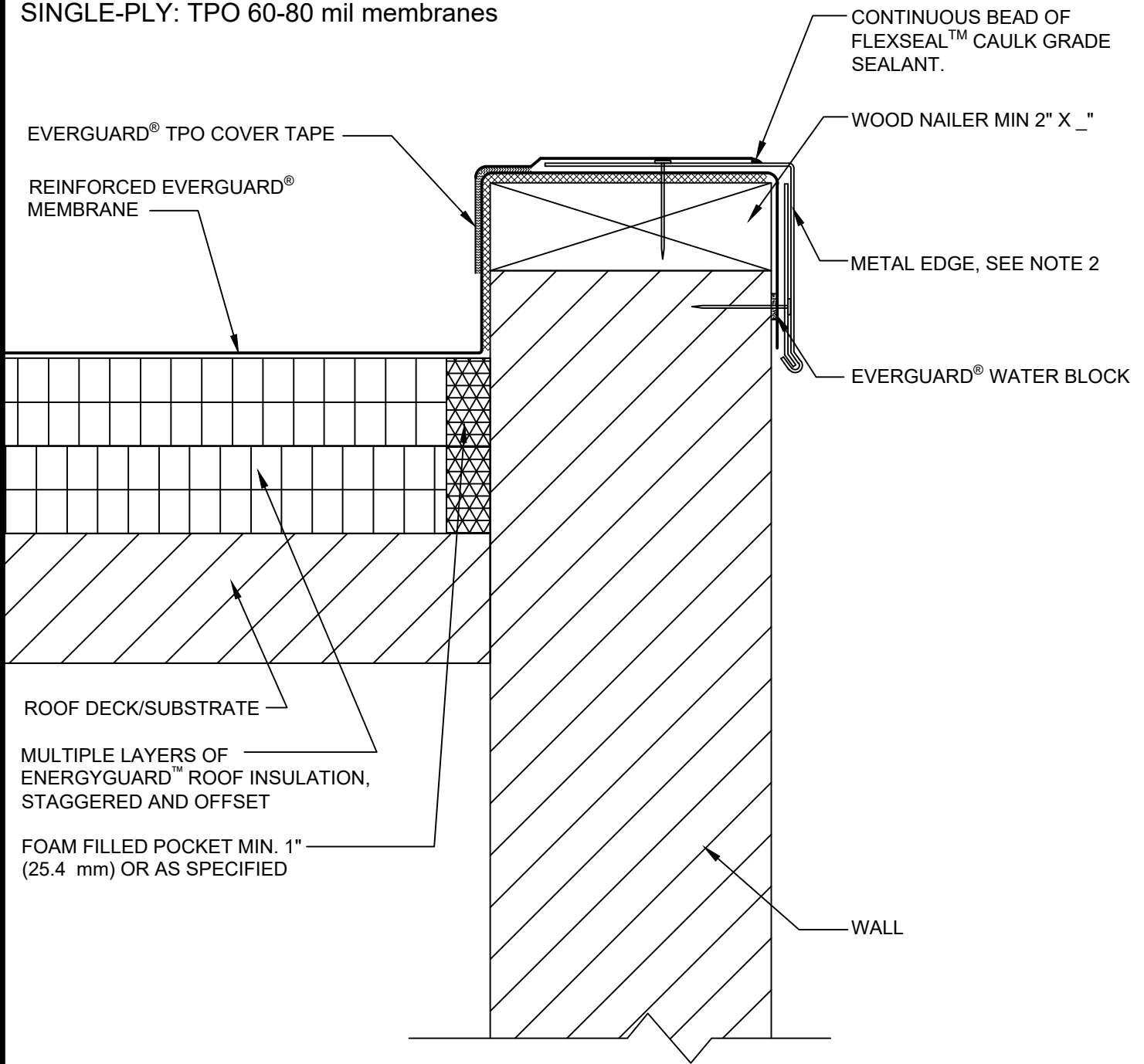




SINGLE-PLY: TPO 60-80 mil membranes



NOTE:

1. CLEAN METAL AND MEMBRANE WITH EVERGUARD® TPO SEAM CLEANER AND ALLOW TO DRY. ONCE DRY, PRIME METAL AND MEMBRANE WITH EVERGUARD® TPO PRIMER BEFORE INSTALLING EVERGUARD® TPO COVER TAPE.
2. METAL EDGE SHOULD BE DESIGNED FOR WIND RESISTANCE IN ACCORDANCE WITH THE APPLICABLE EDITION OF ASCE 7 AND TESTED FOR CAPACITY IN ACCORDANCE WITH THE TEST METHODS IN ANSI/SPRI ES-1.
3. FOR STEEL ROOF DECKS: FILL STEEL DECK FLUTES WITH SPRAY FOAM INSULATION PRIOR TO THE INSTALLATION OF ABOVE DECK INSULATION A MINIMUM OF 12 INCHES (305 mm) FROM FACE OF WALL.



**WALL FLASHING WITH METAL EDGE WITH COVER TAPE
DETAIL**

DRAWING #
304C

THIS DETAIL APPLIES TO:
ADHERED SYSTEMS
MECHANICALLY ATTACHED SYSTEMS
RHINO BOND® SYSTEMS

ISSUE / REVISION DATE
3/22/21

SCALE
N.T.S.

LEGEND

- HEAT-WELDED
- EVERGUARD® BONDING ADHESIVE
- EVERGUARD® WATER BLOCK