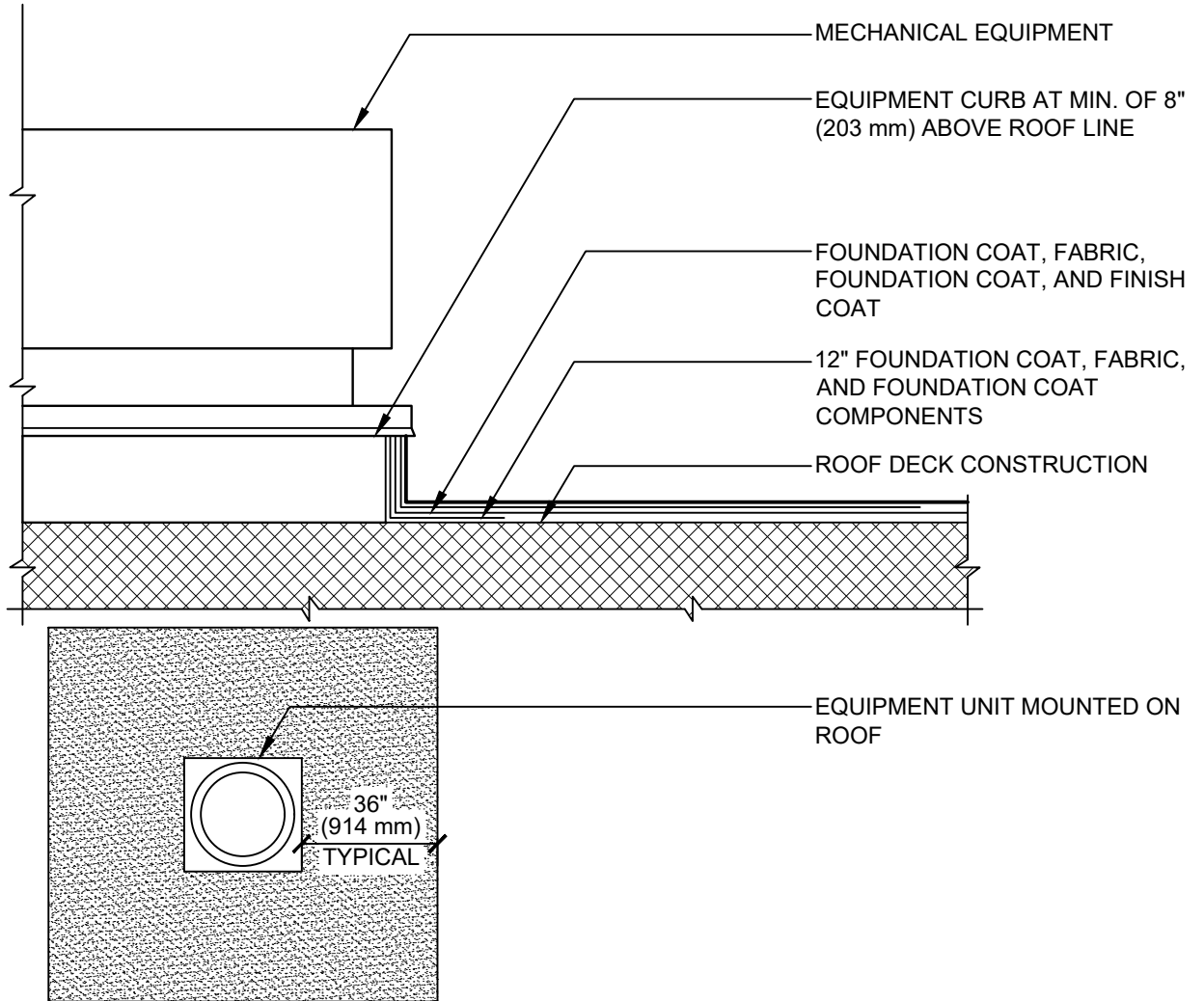


# LIQUID APPLIED MEMBRANE



**NOTE:**

1. THIS DETAIL IS A TYPICAL FLASHING DETAIL AT EQUIPMENT CURBS.
2. PREPARE THE ROOF SURFACE AS PER GAF SPECIFICATIONS PRIOR TO APPLICATION OF ROOF COATING.
3. REFER TO THE SPECIFICATIONS FOR SPECIFIC EXECUTION REQUIREMENTS.
4. HYDROSTOP™ PREMIUMCOAT® SYSTEM - FOUNDATION COAT, FABRIC, FOUNDATION COAT, AND FINISH COAT COMPONENTS.
5. PRIMING - REFER TO HYDROSTOP™ SPECIFICATIONS FOR DECK PRIMING REQUIREMENTS.



## TYPICAL EQUIPMENT CURB FLASHING DETAIL

DRAWING #  
**304**

ISSUE / REVISION DATE  
2/20/20

SCALE  
N.T.S.

**LEGEND**

— FINISH COAT COMPONENT OVER ENTIRE ROOF, COLOR AS SPECIFIED