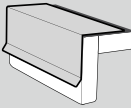
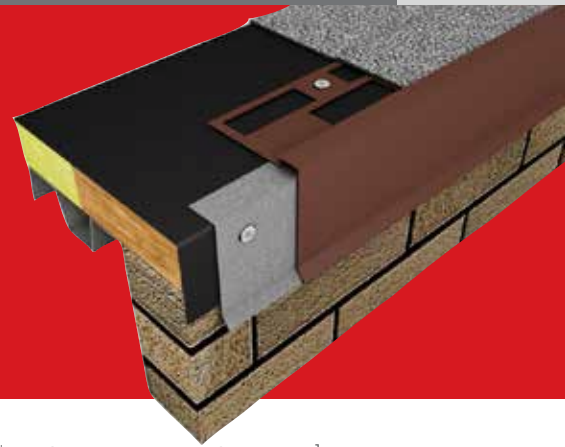


# Perimeter Edge Metal



## M-WELD™ GAF Gravel Stop MB Fascia - Type B



### Description:

M-Weld™ Gravel Stop MB Fascia - Type B offers quick-to-ship convenience and economical pricing to simplify projects and help maximize profits. Its concealed splice plate design prevents water migration under the fascia panels and provides proper spacing for thermal movement of the fascia material. M-Weld™ Gravel Stop MB Fascia - Type B is specifically designed for use with APP and SBS torch-applied assemblies.

### Features and Benefits:

- Factory-fabricated miters provide a cleaner, more aesthetically pleasing appearance. This eliminates the need for field fabrication, providing time and labor savings.
- All splice plates and 22 ga. galvanized continuous cleats with slotted holes are included and arrive to the job site with the product.
- Sizes range from 2" (51 mm) - 10" (254 mm) face heights to accommodate multiple nailers and wall requirements.
- Covers can be manufactured in 22 and 24 ga. galvanized steel, and .040", .050", and .063" aluminum.

- Express, standard, and premium colors and finishes are available to meet your job requirements and include a 30-year limited Kynar 500® finish warranty on coil-coated standard colors. For limited warranty details, please visit [gaf.com](http://gaf.com).
- Custom colors are also available. A 10-year limited warranty is included for post-painted Kynar®-coated aluminum applications unless otherwise stated. A 20-year limited warranty may be available upon request for certain colors.\*

\* Restrictions may apply; consult a sales representative for specific information.

### Codes/Testing Compliance:

- Tested per ANSI/SPRI/FM 4435/ES-1 Standard to comply with the International Building Code.
- FM-approved for wind uplift protection. Refer to [RoofNav.com](http://RoofNav.com) for actual assemblies.



### 10 Express Colors<sup>1</sup>

Express Colors are available for quick shipping to meet your job requirements.<sup>2</sup>

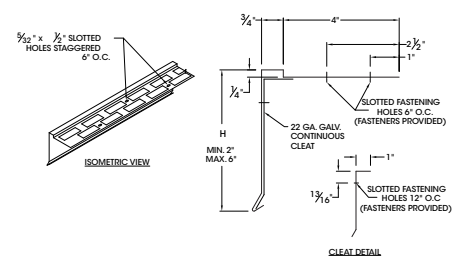


For standard and premium colors, please refer to the GAF color chart, available at [gaf.com/perimeteredgemetal](http://gaf.com/perimeteredgemetal). Custom colors are also available.

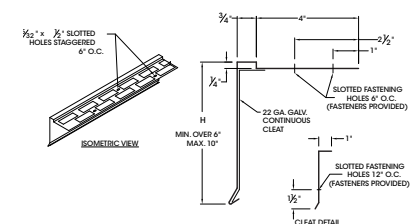
<sup>1</sup> It is difficult to reproduce the color clarity of these products. Before selecting your color, please contact your local GAF territory manager to request a paint chip for accurate color representation.

<sup>2</sup> Express Colors available in shorter lead times for 24 ga., .040", and .050" only. Standard lead times, which may be longer, apply for 22 ga. and .063".

### FACE HEIGHT 6" OR LESS



### FACE HEIGHT OVER 6"



### Product Specifications

STANDARD SIZES	2" (51 mm) - 10" (254 mm) tested up to 6" (152 mm)
LENGTH	12 ft. (6.10 m)
MATERIALS	22 & 24 ga. galvanized steel .040", .050", .063" aluminum
FINISHES	Mill aluminum Pre-finished Kynar 500® (See standard color chart) Premium pre-finished Kynar 500® (See standard color chart) Post-finished Kynar 500® Pre-finished anodized aluminum - clear, bronze, or black Post-finished anodized aluminum Custom post-coated Kynar 500® finishes are available
PRE-PUNCHED HOLES	12" (305 mm) o.c. the face/6" (152 mm) o.c. on the flange



Visit [gaf.com/PerimeterEdgeMetal](http://gaf.com/PerimeterEdgeMetal)

We protect what matters most™

