

# EverGuard<sup>®</sup> TPO Universal Corner Sell Sheet

Updated: 7/17



*Quality You Can Trust...From  
North America's Largest Roofing Manufacturer!™*



# EVERGUARD® TPO

# TPO Accessories

## Description

EverGuard® TPO single-ply roofing system molded accessories provide roofing contractors an easy-to-install factory-built detail. EverGuard® molded accessories are manufactured using a proprietary formulation designed for use with EverGuard® TPO single-ply membranes.

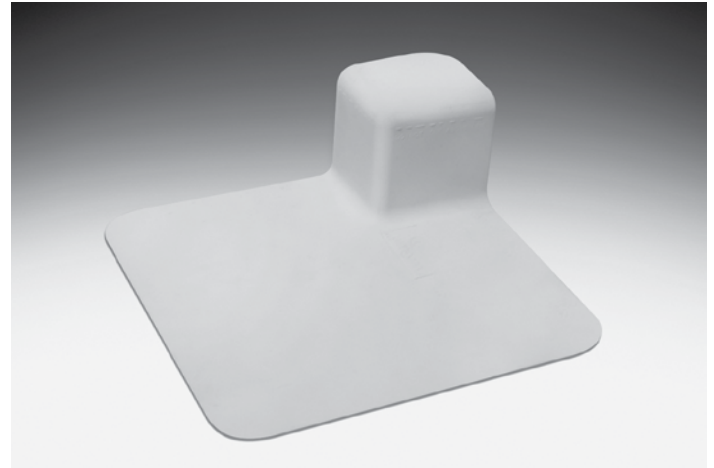
- **Cost effective...**  
Reduces installed costs
- **Improved Reliability...**  
Factory-built accessories reduce risk of leaks and callbacks
- **Improved aesthetics...**  
Uniform look

## Application

EverGuard® TPO molded accessories are designed for use with GAF EverGuard® TPO single-ply membranes and EverGuard® Freedom™ TPO self-adhering membranes. The molded accessories may be installed on mechanically attached, fully adhered, or self-adhered EverGuard® TPO roofing systems. EverGuard® molded accessories are installed using conventional techniques. See published application and specifications manual for detailed instructions.

## Product Information

EverGuard® Universal Corners accommodate both inside and outside corners of base and curb flashings. Simply cut at markings to produce either an inside or outside corner reinforcement. EverGuard® Universal Corners eliminate the need to inventory two items.



## Universal Corner

- One standard size
- Can be cut to accommodate use as either an inside or outside corner reinforcement
- Molded to 60 mil thickness from TPO

SPECIFICATIONS	
Dimensions:	3" x 3" (76 mm x 76 mm) with 6" (152 mm) Flange
Thickness:	0.070" (1.78 mm)
SHIPPING SPECIFICATIONS	
Corners per carton:	20
Weight per carton:	9 lb. (4.08 kg)
Cartons per pallet:	232
PRODUCT SKUs	
White	7730920CU

Quality You Can Trust... From North America's Largest Roofing Manufacturer!™

[gaf.com](http://gaf.com)

Visit [gaf.com](http://gaf.com) to see our full line of prefabricated accessories!