

GAF TPO Accessories EverGuard Fluted Corners (COMEG162)

Updated: 4/14



*Quality You Can Trust...From
North America's Largest Roofing Manufacturer!™*



TPO Molded Accessories

Description

EverGuard[®] TPO single-ply roofing system molded accessories provide roofing contractors an easy-to-install, factory-built detail. EverGuard[®] molded accessories are manufactured using a proprietary formulation designed for use with GAF's EverGuard[®] TPO single-ply membranes.

- **Cost effective...**
Reduces installed costs
- **Improved Reliability...**
Factory-built accessories reduce risk of leaks and callbacks
- **Improved aesthetics...**
Uniform look

Application

EverGuard[®] TPO molded accessories are designed for use with GAF EverGuard[®] TPO single-ply membranes and EverGuard[®] Freedom[™] TPO self-adhering membranes. The molded accessories may be installed on mechanically attached, fully adhered, or self-adhered EverGuard[®] TPO roofing systems. EverGuard[®] molded accessories are installed using conventional techniques. See published application and specifications manual for detailed instructions.

Product Information

EverGuard[®] Fluted Corners are molded from a proprietary TPO formulation engineered to work with EverGuard[®] TPO single-ply membranes. Fluted Corners allow for easy flashing of non-uniform corners.

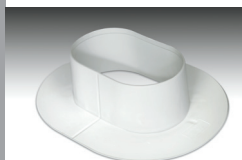


Fluted Corner

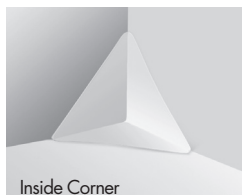
- Manufactured to accommodate imperfect corners
- Designed for ease of welding in tight areas
- Fluted Corners are formed using unreinforced membrane to a nominal 50 mil thickness

SPECIFICATIONS	
Diameter:	8"
Nominal thickness:	.050"
SHIPPING SPECIFICATIONS	
Corners per carton:	20
Weight per carton:	2.5 lbs.
Cartons per pallet:	250
PRODUCT SKUs	
TPO Fluted Corner White	8A00920WA
TPO Fluted Corner Tan	8A00820WA
TPO Fluted Corner Grey	8A00345WA

Also Available...



Pourable Sealer Pocket



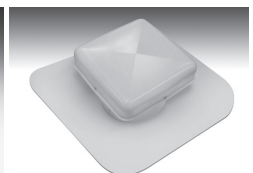
Inside Corner



Vent Boot



Universal Corner



Vent

Quality You Can Trust... From North America's Largest Roofing Manufacturer![™]

gaf.com