

# **EnergyGuard™ Perlite Tapered Edge Strip**

Updated: 7/17



*Quality You Can Trust...From  
North America's Largest Roofing Manufacturer!™*



# ENERGYGUARD™

## PERLITE TAPERED EDGE STRIP

(1 of 2)

### Description

- Factory-fabricated from EnergyGuard™ rigid perlite insulation board.
- Cut on angles that slope from zero on one edge to 1/2" to 1 1/2" (12.7 mm to 38 mm) on the opposite edge.
- Designed for smooth transition from lower to higher elevations.
- Easy to fabricate for installation with most types of roof systems.
- Available in bundles 48" (1.22 m) in length.
- Available in different heights and widths for all types of job requirements as follows:

### Edge Strip Sizes\*

1/2" (13 mm)	x 6" (152 mm)	x 48" (1.22 m)
1/2" (13 mm)	x 12" (305 mm)	x 48" (1.22 m)
1" (25 mm)	x 12" (305 mm)	x 48" (1.22 m)
1" (25 mm)	x 18" (457 mm)	x 48" (1.22 m)
1-1/2" (38 mm)	x 12" (305 mm)	x 48" (1.22 m)
1-1/2" (38 mm)	x 18" (457 mm)	x 48" (1.22 m)

\*All sizes shown are nominal and subject to nominal manufacturing tolerances.

### Uses

- To provide smooth transition from lower to higher elevations around roof edges, drains, or wherever slope to 0" (0 mm) is required.
- Properly installed, EnergyGuard™ Perlite Tapered Edge Strip is suitable for use under built-up and modified bitumen roofing systems.
- Refer to the application specifications in the current membrane manufacturer's application and specifications manual for proper installation procedures for EnergyGuard™ Perlite Tapered Edge Strip.

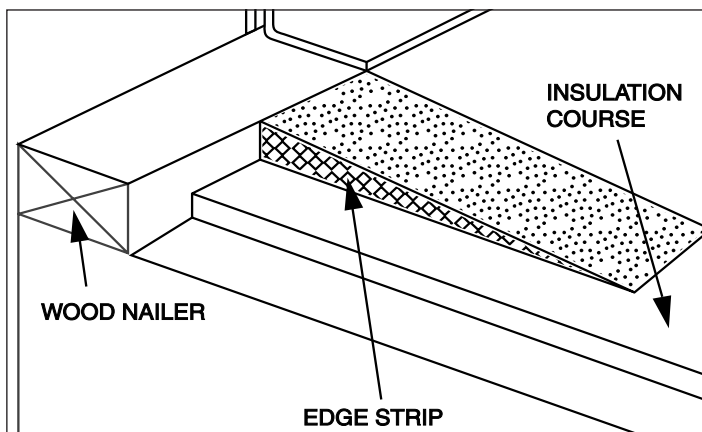
### Specification Benefits

- UL, ULC Flame Spread Rating 25.
- Strong and dimensionally stable.
- Available in standard heights and widths.
- Can be shipped in mixed loads with roof insulation and tapered systems.
- Multiple shipping locations.
- Easily identifiable bundles.
- Edge strips have at least 33% post-consumer recycled content and comply with the Environmental Protection Agency Regulation 40 CFR Part 248, "Guideline for Federal Procurement of Building Insulation Products Containing Recovered Materials," as a recycled product approved for use on any project using federal funds.

### Limitations

- EnergyGuard™ Perlite Tapered Edge Strip is a non-structural, non-load bearing material.
- EnergyGuard™ Perlite Tapered Edge Strip should be stored dry and be protected from the elements. Once properly loaded at the job site, remove factory wraps and cover with a breathable tarp.
- No more insulation should be applied than can be completely covered with finished roofing on the same day.
- It is **NOT** designed for use under fully adhered single-ply systems nor for direct torch application of modified bitumen.
- If torch-grade modified bitumen roofing is to be installed over EnergyGuard™ Perlite Tapered Edge Strip, a fiberglass base sheet **MUST** first be installed.

EnergyGuard™  
Perlite Tapered  
Edge Strip











# ENERGYGUARD™

## PERLITE TAPERED EDGE STRIP

(2 of 2)

### EnergyGuard™ Perlite Tapered Edge Strip Sizes and Packaging

(NOTE: Measurements in GRAY are in millimeters)

Dimensions Inches (mm)	Per Bundle		Per Pallet	
	Pcs.	Ln. Ft. (Ln. Meter)	Bundles	Ln. Ft. (Ln. Meter)
1/2"  (13) 6" 152	72	288 (88)	14	4,032 (1,229)
1/2"  (13) 12" 305	36	144 (44)	14	2,016 (614)
1"  (25) 12" 305	28	112 (34)	10	1,120 (341)
1"  (25) 18" 457	18	72 (22)	10	720 (219)
1 1/2"  (38) 12" 305	12	48 (15)	16	768 (234)
1 1/2"  (38) 18" 457	12	48 (15)	10	480 (146)

Other sizes are available on a special order basis.

**Note:** Packaging is subject to change without prior notice. Consult FM Loss Prevention Data Sheet 1-49 for specific perimeter flashing details.