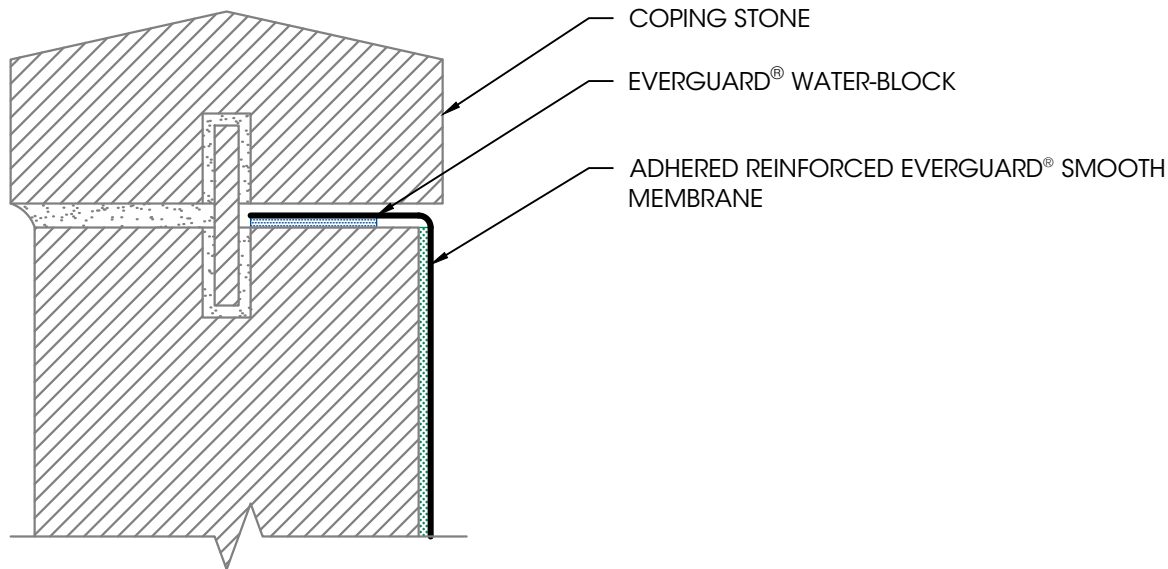
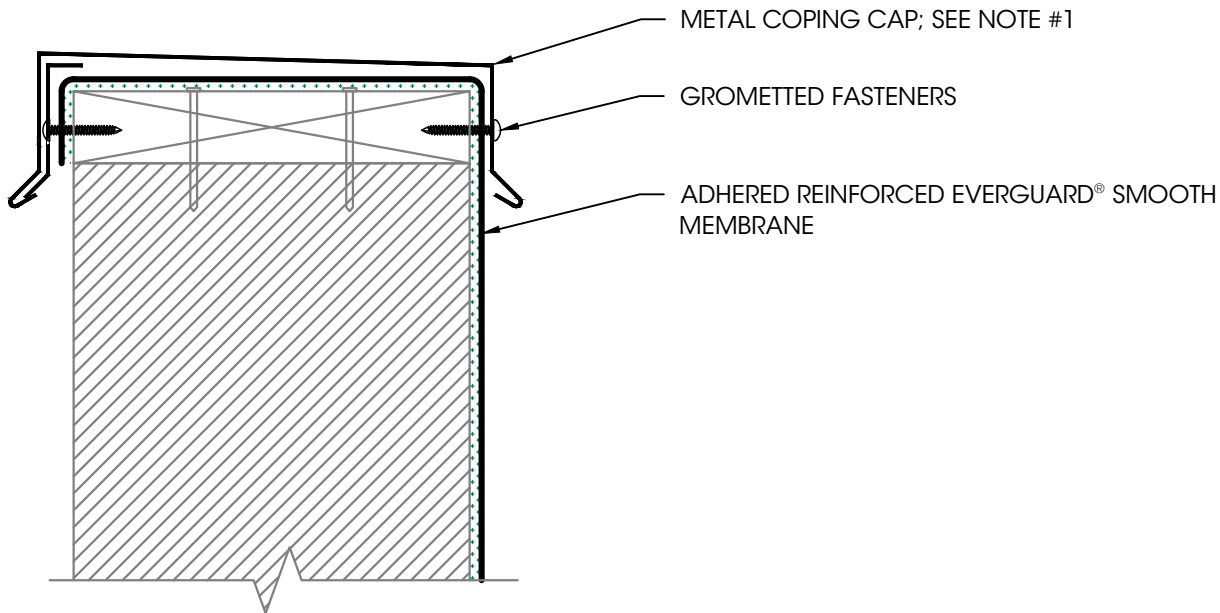


1. Parapet Wall with Coping Stone



2. Parapet Wall with Metal Coping Cap



NOTES:

1. EDGE METAL SHOULD BE DESIGNED FOR WIND RESISTANCE IN ACCORDANCE WITH THE APPLICABLE EDITION OF ASCE 7 AND TESTED FOR CAPACITY IN ACCORDANCE WITH THE TEST METHODS IN THE APPLICABLE EDITION OF ANSI/SPRI ES-1.

Flashing Termination Options at Top of Wall



We
protect
what
matters
most™

Legend:

Sealant



Adhesive



Product:
EverGuard TPO
Fleece-back

**Installation
Method:**
Hybrid

**Maximum
Warranty:**
35 Years

Date:
7/11/2025

Scale:
3" = 1'

Detail No.
07 54 23
933