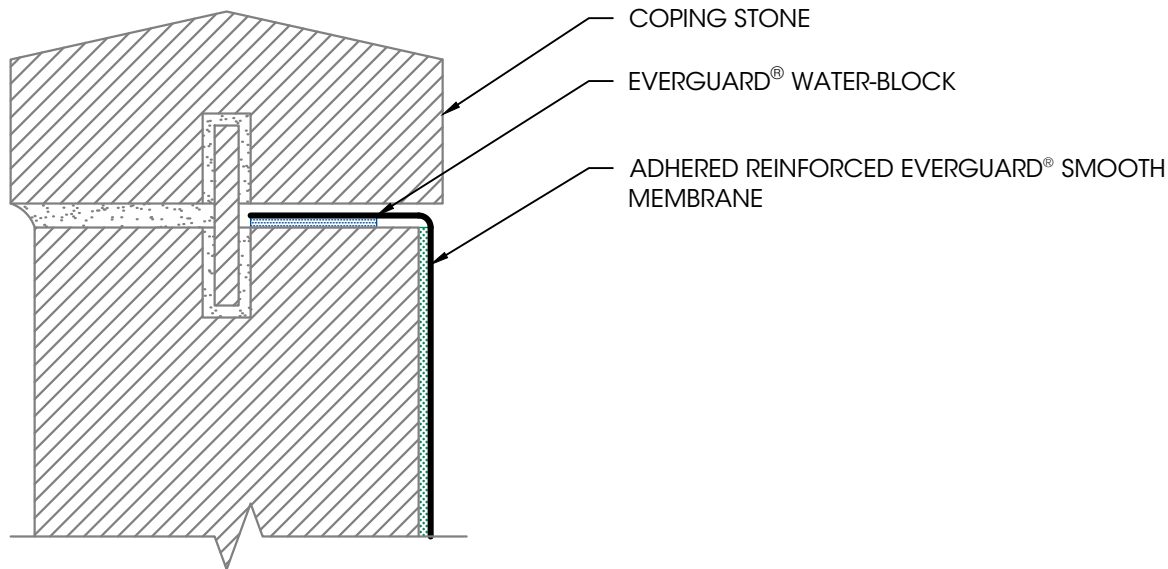
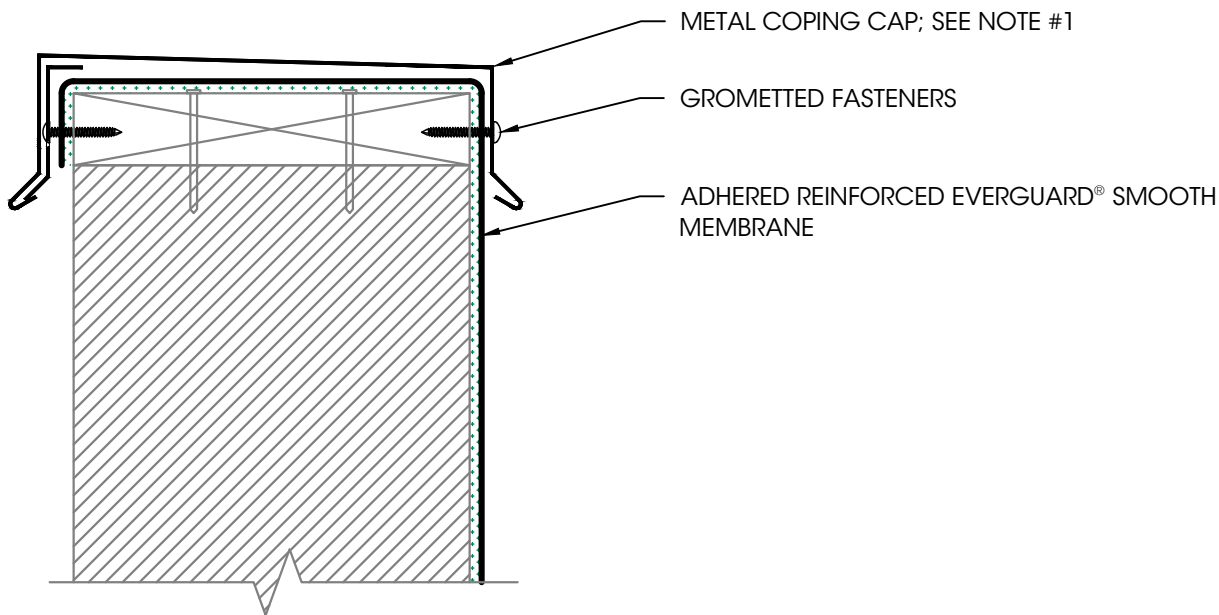


1. Parapet Wall with Coping Stone



2. Parapet Wall with Metal Coping Cap



NOTES:

1. EDGE METAL SHOULD BE DESIGNED FOR WIND RESISTANCE IN ACCORDANCE WITH THE APPLICABLE EDITION OF ASCE 7 AND TESTED FOR CAPACITY IN ACCORDANCE WITH THE TEST METHODS IN THE APPLICABLE EDITION OF ANSI/SPRI ES-1.

Flashing Termination Options at Top of Wall



We
protect
what
matters
most™

Legend:

Sealant



Adhesive



Product:

EverGuard PVC
Fleece-back

Installation

Method:

Hybrid

Maximum

Warranty:

30 Years

Date:

7/11/2025

Scale:

3" = 1'

Detail No.

07 54 19

933