



We
protect
what
matters
most™

Legend:

Heat Weld



Sealant



Adhesive



Foam



Product:

EverGuard TPO

Installation:

Cold Storage
Systems

**Maximum
Warranty:**

—

Date:

2/14/2025

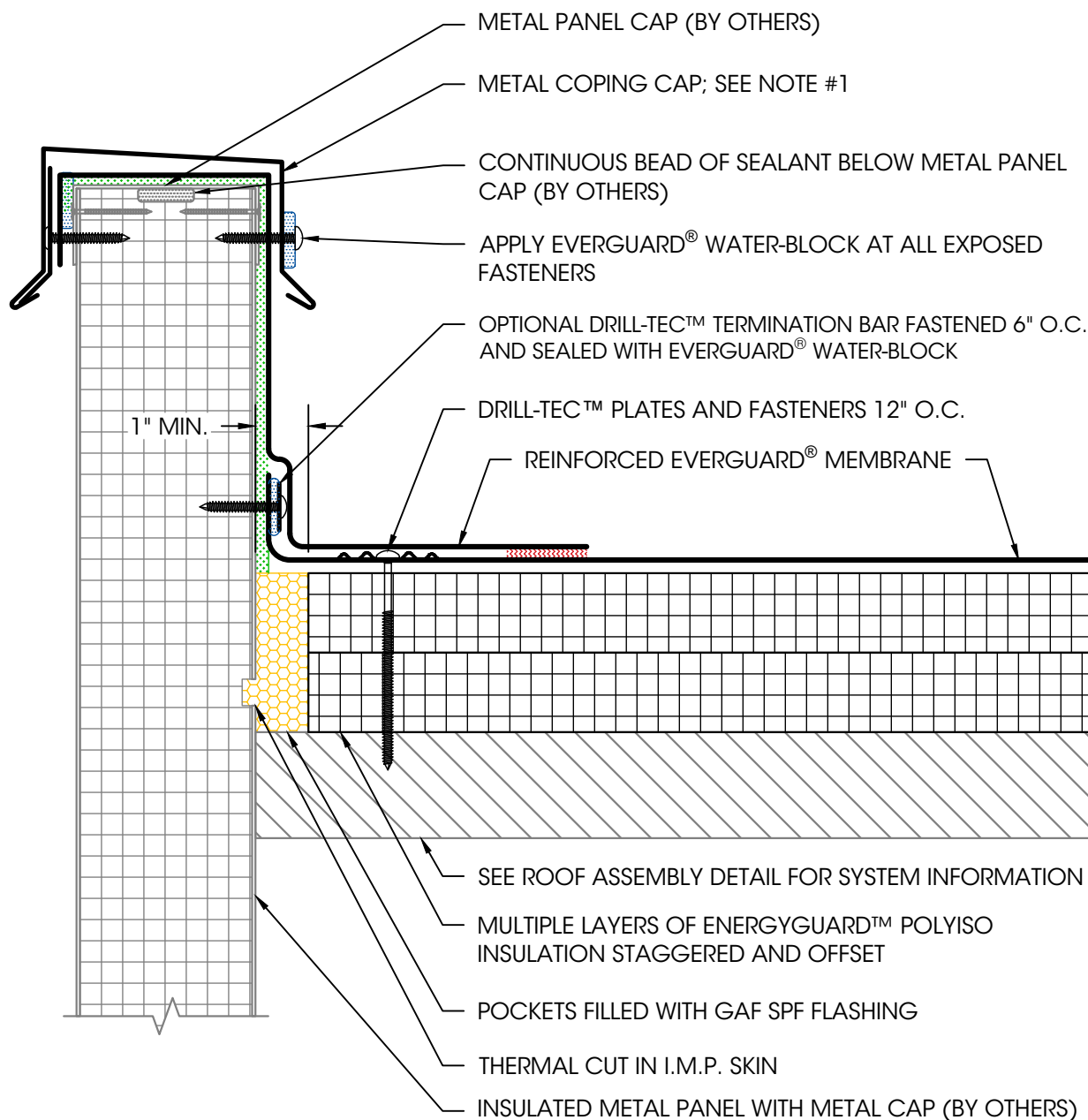
Scale:

Not To Scale

Detail No.

075423

303B



NOTES:

1. EDGE METAL SHOULD BE DESIGNED FOR WIND RESISTANCE IN ACCORDANCE WITH THE APPLICABLE EDITION OF ASCE 7. ADDITIONAL REQUIREMENTS APPLY FOR GUARANTEE COVERAGE OF ATTACHMENT TO INSULATED METAL WALL PANELS. CONTACT coldstorage.assistance@gaf.com FOR DETAILS.
2. FOR STEEL ROOF DECKS: FILL STEEL DECK FLUTES WITH CLOSED CELL SPRAY FOAM INSULATION PRIOR TO THE INSTALLATION OF ABOVE DECK INSULATION A MINIMUM OF 12" FROM FACE OF WALL ON EACH SIDE.

IMP Wall Flashing with Coping Cap