



We
protect
what
matters
most™

Legend:

Heat Weld



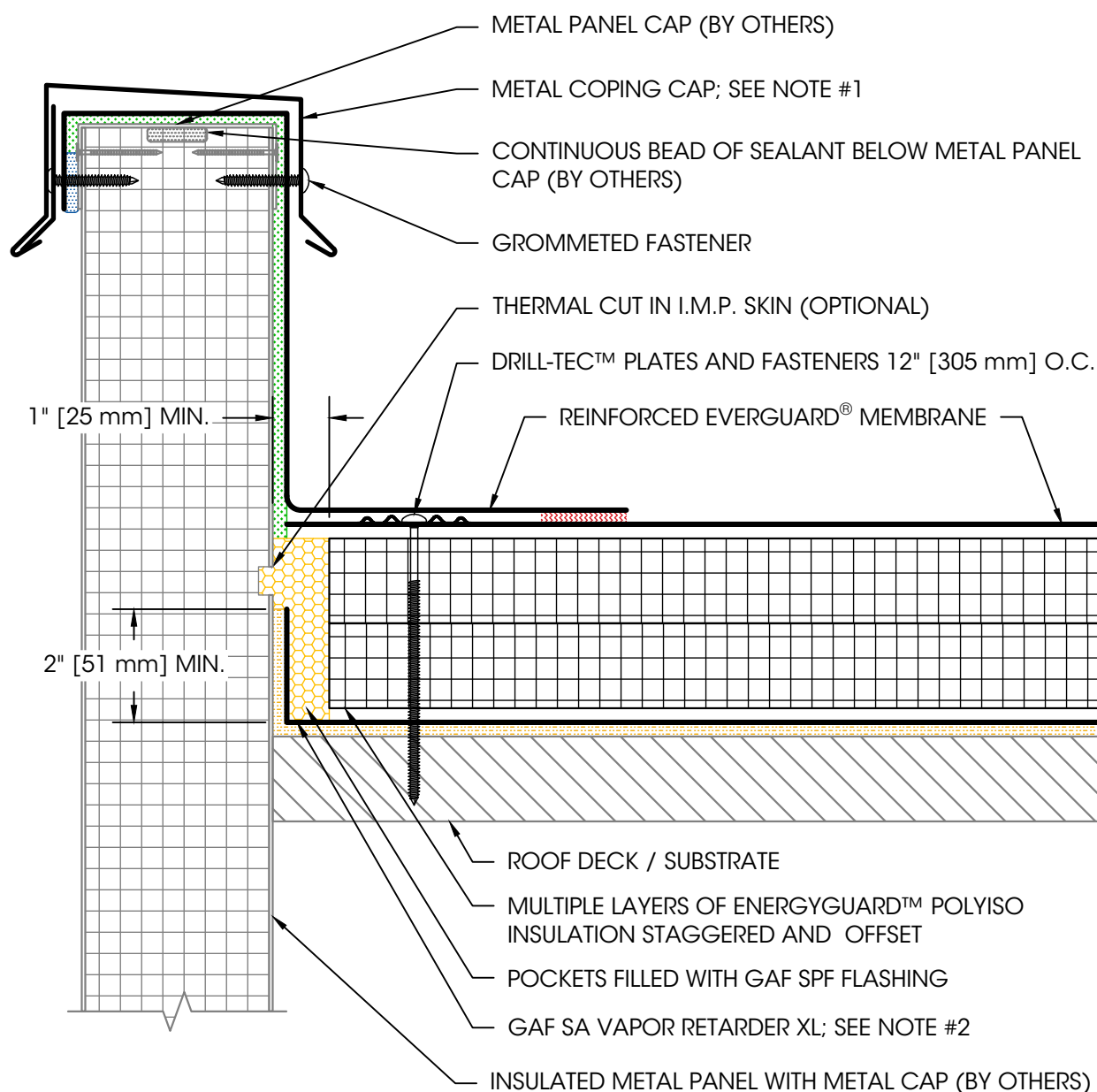
Sealant



Adhesive



Foam



NOTES:

1. EDGE METAL SHOULD BE DESIGNED FOR WIND RESISTANCE IN ACCORDANCE WITH THE APPLICABLE EDITION OF ASCE 7. ADDITIONAL REQUIREMENTS APPLY FOR GUARANTEE COVERAGE OF ATTACHMENT TO INSULATED METAL WALL PANELS. CONTACT coldstorage.assistance@gaf.com FOR DETAILS.
2. A VAPOR RETARDER MAY BE USED AT THE DECK LEVEL IF THERE ARE CONCERNS WITH POTENTIAL MOISTURE ISSUES DUE TO CERTAIN CONSTRUCTION PROCESSES OR OTHER SOURCES DURING BUILDING USE.
3. REFER TO GAF SA PRIMER INSTALLATION INSTRUCTIONS FOR GENERAL GUIDELINES.
4. MAINTAIN SEPARATION BETWEEN VAPOR RETARDER AND MEMBRANE / ADHESIVE TO AVOID POTENTIAL INCOMPATIBILITY ISSUES.
5. FOR STEEL ROOF DECKS: FILL STEEL DECK FLUTES WITH CLOSED CELL SPRAY FOAM INSULATION PRIOR TO THE INSTALLATION OF ABOVE DECK INSULATION A MINIMUM OF 12" [305 mm] FROM FACE OF WALL ON EACH SIDE.

Product:

EverGuard TPO

Installation:

Cold Storage
Systems

Maximum

Warranty:

—

Date:

2/14/2025

Scale:

Not To Scale

Detail No.

075423

303C

IMP Wall with Coping Cap and Vapor Retarder