



We  
protect  
what  
matters  
most™

**Legend:**

Sealant



Adhesive



Foam



**Product:**

EverGuard TPO

**Installation:**

Cold Storage  
Systems

**Maximum**

**Warranty:**

—

**Date:**

2/14/2025

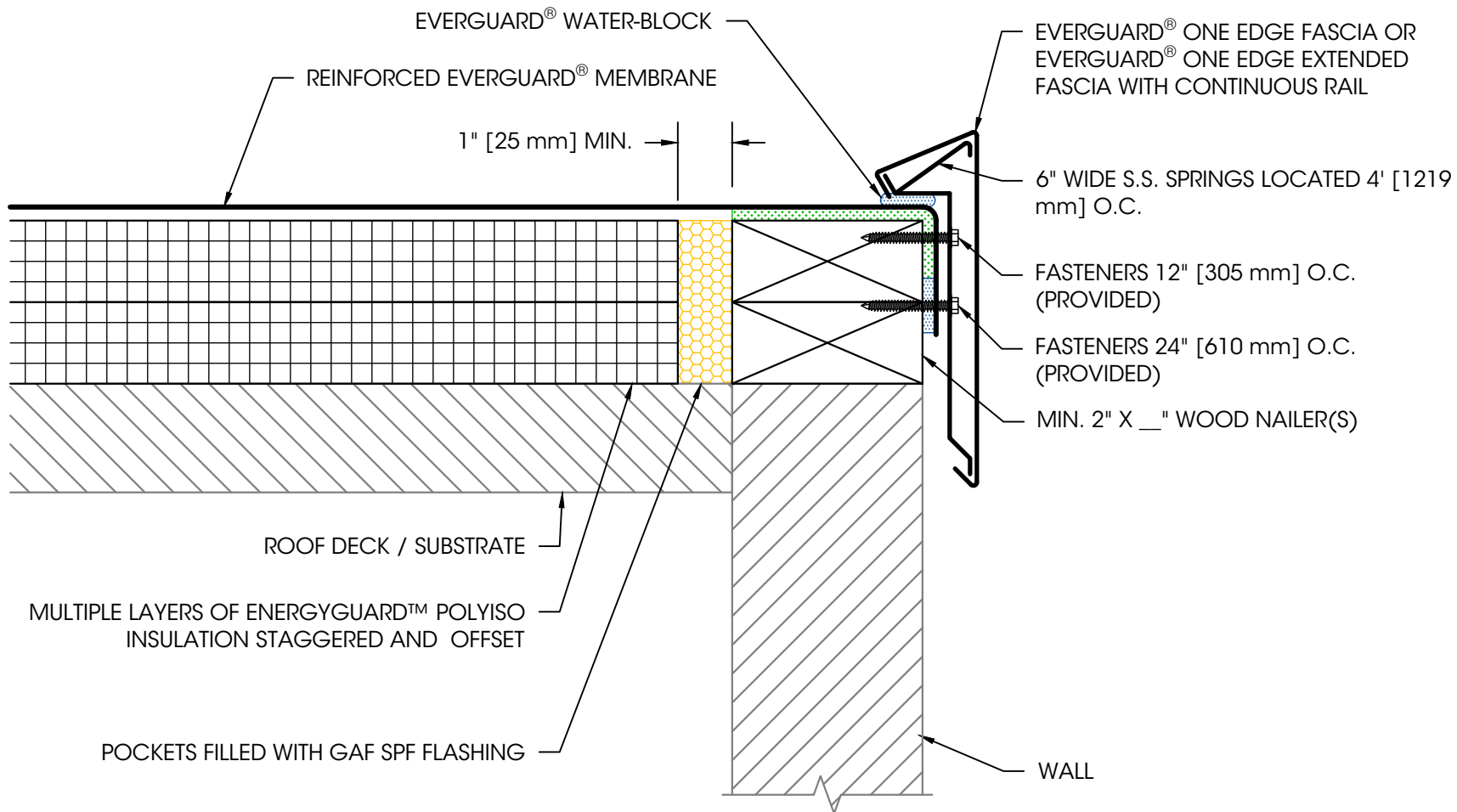
**Scale:**

Not To Scale

**Detail No.**

075423

**205**



**NOTES:**

1. EDGE METAL SHOULD BE DESIGNED FOR WIND RESISTANCE IN ACCORDANCE WITH THE APPLICABLE EDITION OF ASCE 7 AND TESTED FOR CAPACITY IN ACCORDANCE WITH THE TEST METHODS IN THE APPLICABLE EDITION OF ANSI/SPRI ES-1.
2. FOR STEEL ROOF DECKS: FILL STEEL DECK FLUTES WITH CLOSED CELL SPRAY FOAM INSULATION PRIOR TO THE INSTALLATION OF ABOVE DECK INSULATION A MINIMUM OF 12" [305 mm] FROM FACE OF WALL.

## EverGuard One Edge Fascia