



We
protect
what
matters
most™

Legend:

Heat Weld



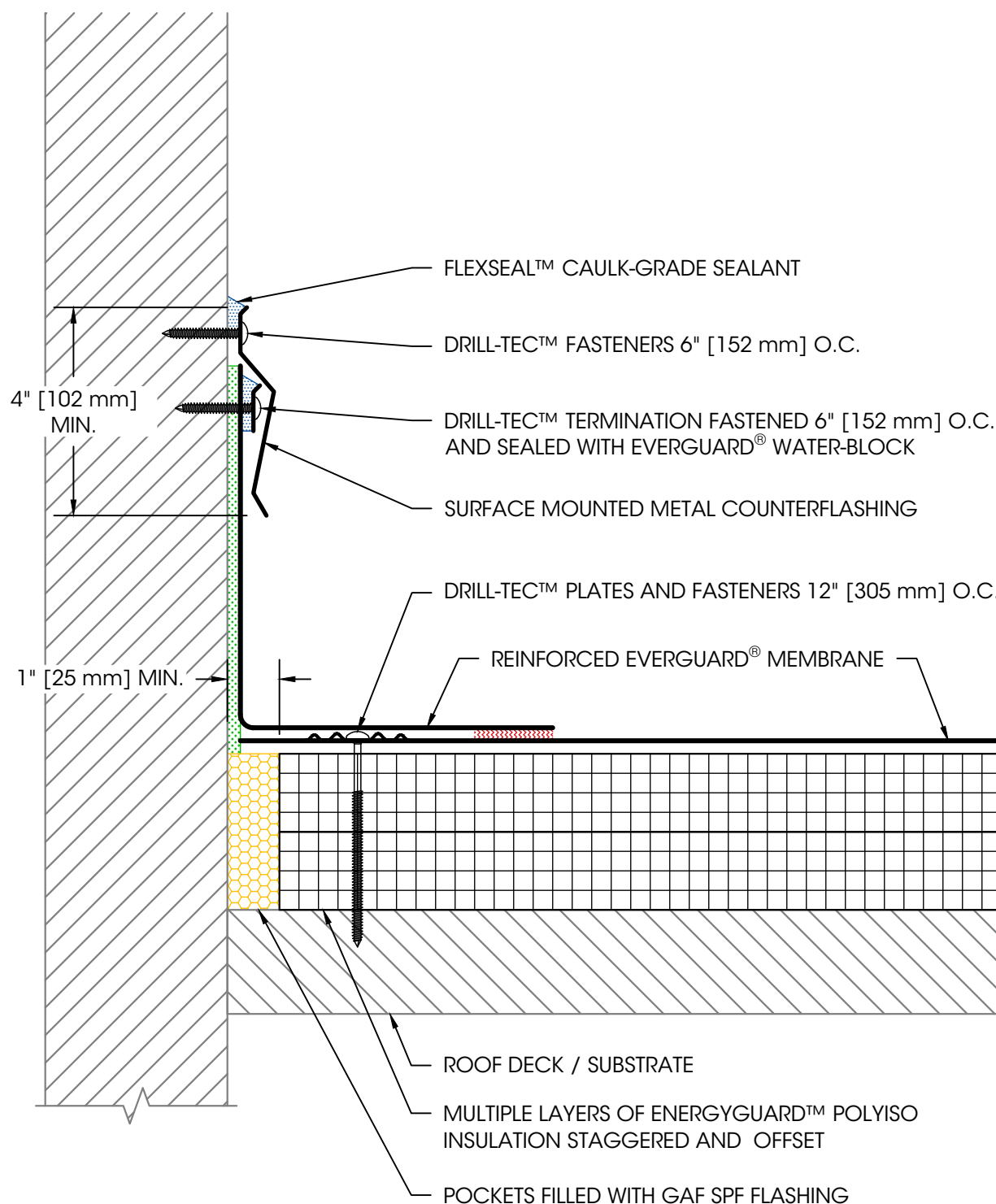
Sealant



Adhesive



Foam



NOTES:

1. EXPOSED WALLS AND CURBS MUST BE WATERPROOFED AND MAINTAINED ABOVE THE BASE FLASHING IN ORDER FOR ANY SURFACE MOUNTED TERMINATION TO BE EFFECTIVE.
2. FOR STEEL ROOF DECKS: FILL STEEL DECK FLUTES WITH CLOSED CELL SPRAY FOAM INSULATION PRIOR TO THE INSTALLATION OF ABOVE DECK INSULATION A MINIMUM OF 12" [305 mm] FROM FACE OF WALL ON EACH SIDE.

Product:
EverGuard PVC

Installation:
Cold Storage
Systems

**Maximum
Warranty:**
—

Date:
4/23/2025

Scale:
Not To Scale

Detail No.
075419

301B

Wall Flashing with Surface Mounted Counterflashing