



We
protect
what
matters
most™

Legend:

Heat Weld



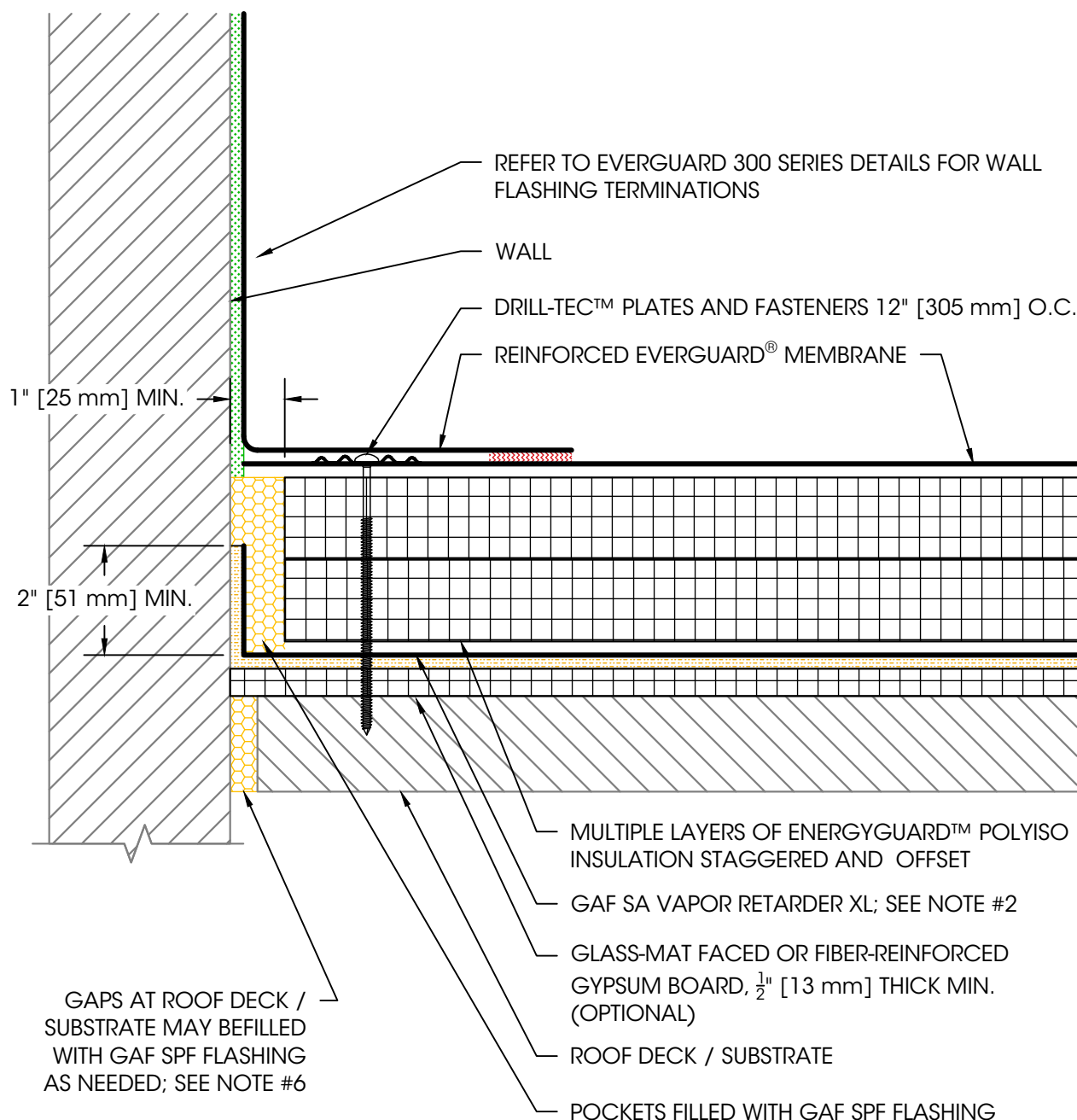
Sealant



Adhesive



Foam



NOTES:

1. USE DETAIL IN CONJUNCTION WITH THE STANDARD FLASHING AND TERMINATION DETAILS FOR THE APPROVED ROOF SYSTEM.
2. A VAPOR RETARDER MAY BE USED AT THE DECK LEVEL IF THERE ARE CONCERNS WITH POTENTIAL MOISTURE ISSUES DUE TO CERTAIN CONSTRUCTION PROCESSES OR OTHER SOURCES DURING BUILDING USE.
3. REFER TO GAF SA PRIMER INSTALLATION INSTRUCTIONS FOR GENERAL GUIDELINES.
4. MAINTAIN SEPARATION BETWEEN VAPOR RETARDER AND MEMBRANE / ADHESIVE TO AVOID POTENTIAL INCOMPATIBILITY ISSUES.
5. FOR STEEL ROOF DECKS: FILL STEEL DECK FLUTES WITH CLOSED CELL SPRAY FOAM INSULATION PRIOR TO THE INSTALLATION OF ABOVE DECK INSULATION A MINIMUM OF 12" [305 mm] FROM FACE OF WALL ON EACH SIDE.
6. WALL TO ROOF DECK INTERFACE MUST BE FULLY AIR SEALED.

Product:

EverGuard PVC

Installation:

Cold Storage
Systems

Maximum

Warranty:

—

Date:

4/23/2025

Scale:

Not To Scale

Detail No.

075419

309

Vapor Retarder Termination at Wall