



We
protect
what
matters
most™

Legend:

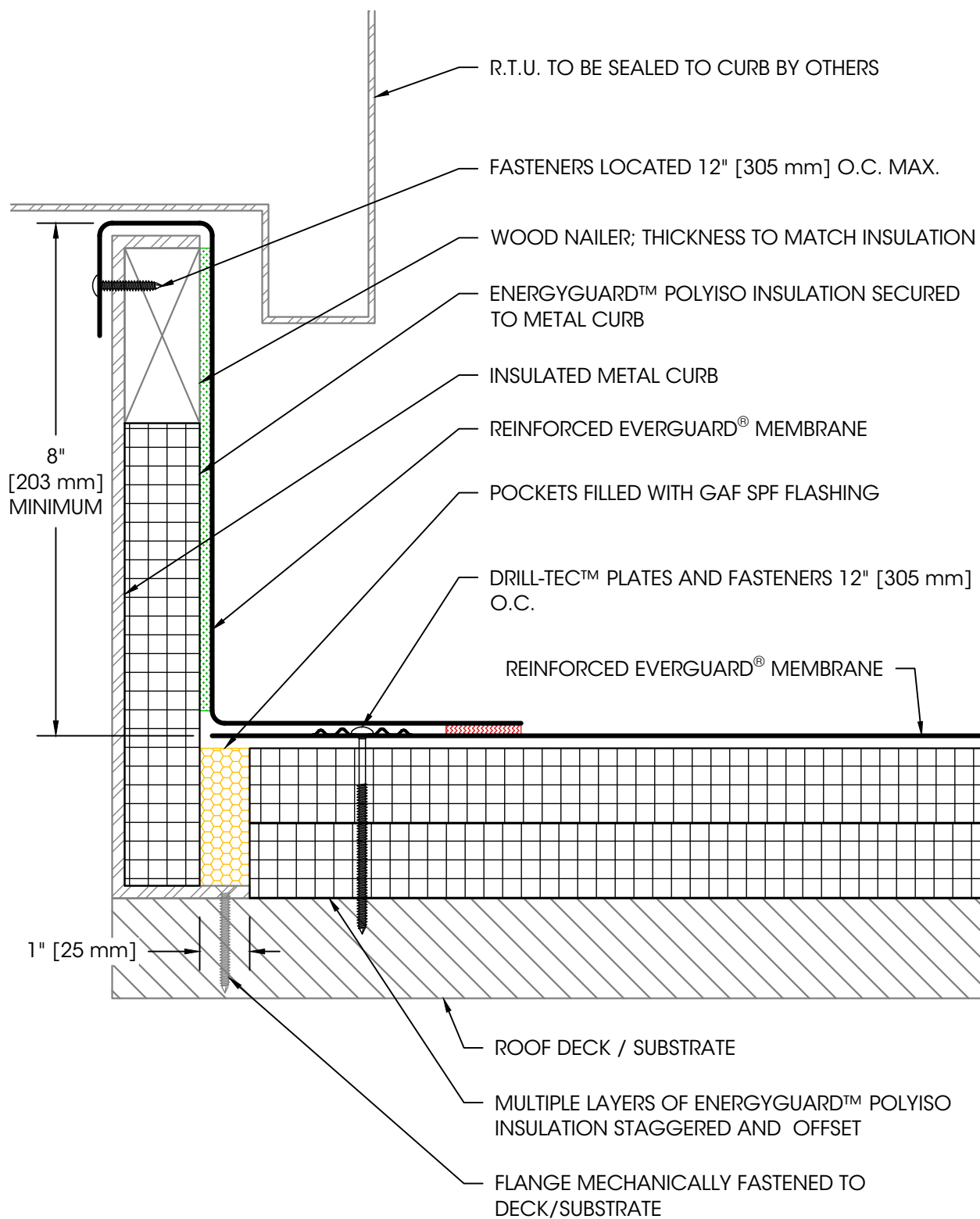
Heat Weld



Adhesive



Foam



NOTES:

1. FOR STEEL ROOF DECKS: FILL STEEL DECK FLUTES WITH CLOSED CELL SPRAY FOAM INSULATION PRIOR TO THE INSTALLATION OF ABOVE DECK INSULATION A MINIMUM OF 12" [305 mm] FROM OPENING ON EACH SIDE.

Product:

EverGuard PVC

Installation:

Cold Storage
Systems

**Maximum
Warranty:**

—

Date:

4/23/2025

Scale:

Not To Scale

Detail No.
075419

503C

RTU Curb Flashing