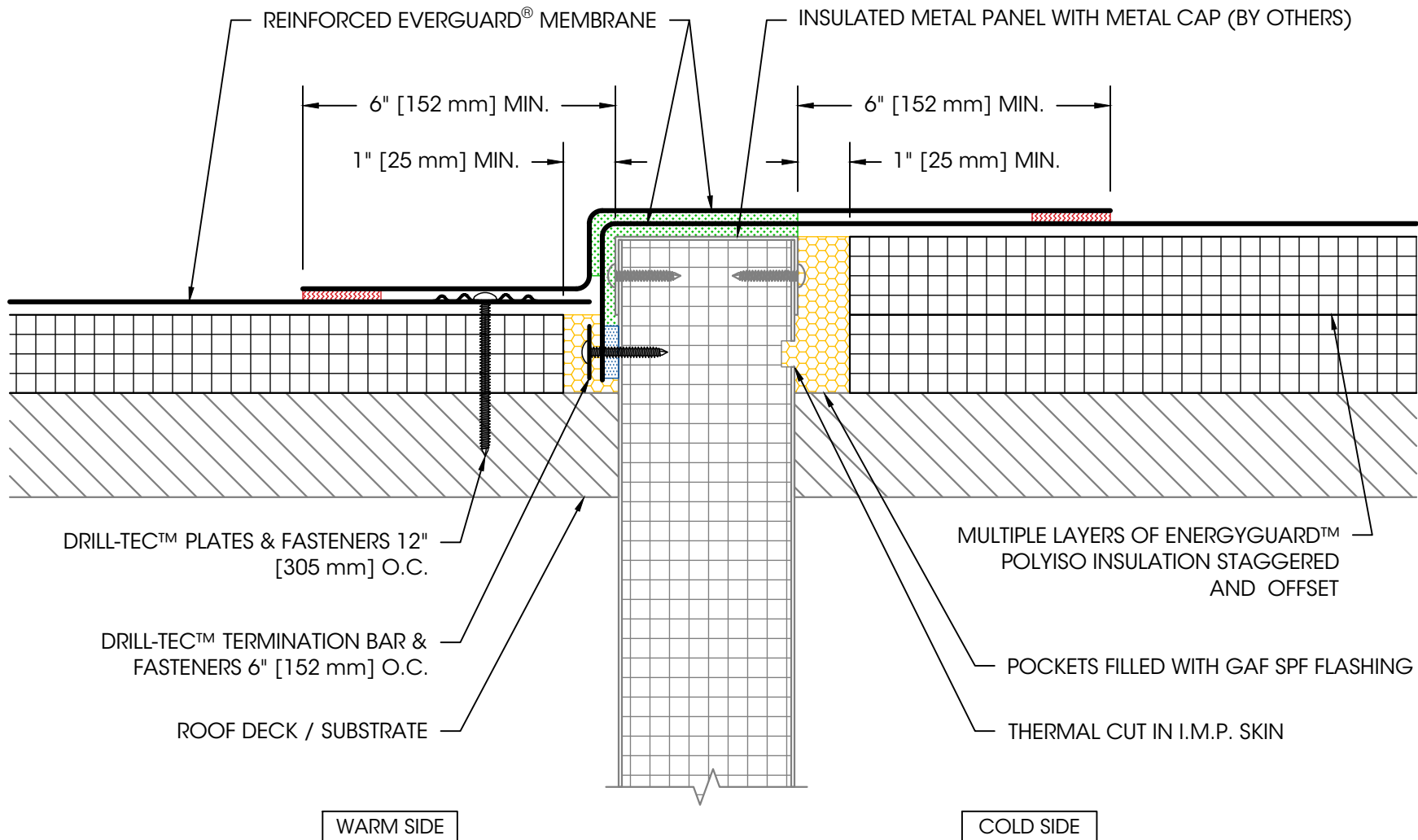




We  
protect  
what  
matters  
most™



**Legend:**

Heat Weld



Sealant



Adhesive



Foam



**Product:**

EverGuard PVC

**Installation:**

Cold Storage  
Systems

**Maximum**

**Warranty:**

—

**Date:**

4/23/2025

**Scale:**

Not To Scale

**Detail No.**

075419

**130D**

**NOTES:**

1. FOR STEEL ROOF DECKS: FILL STEEL DECK FLUTES WITH CLOSED CELL SPRAY FOAM INSULATION PRIOR TO THE INSTALLATION OF ABOVE DECK INSULATION A MINIMUM OF 12" [305 mm] FROM FACE OF WALL ON EACH SIDE.

## Offset Cold to Warm Transition - IMP Above Deck