



We  
protect  
what  
matters  
most™

**Legend:**

Heat Weld



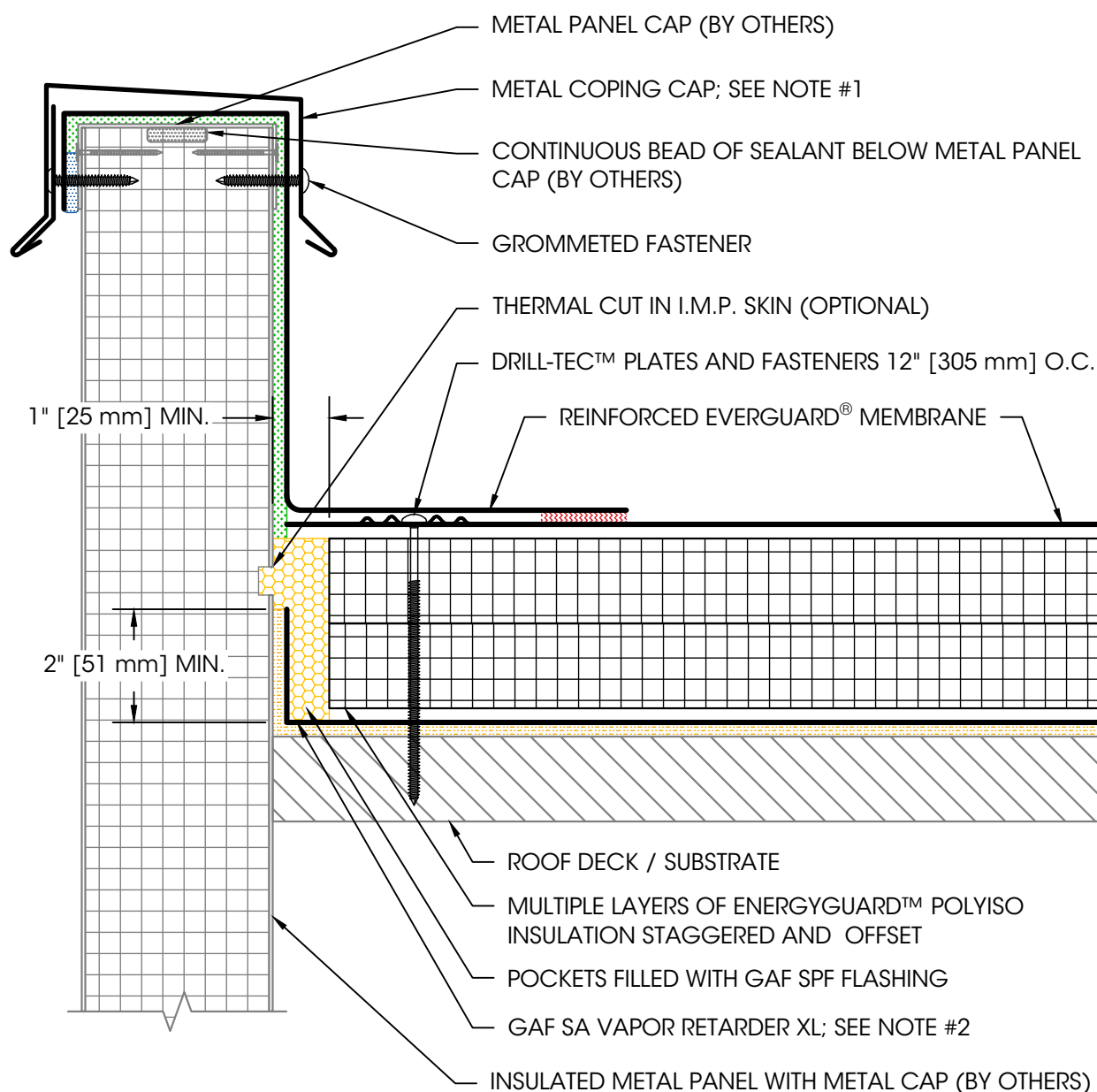
Sealant



Adhesive



Foam



**NOTES:**

1. EDGE METAL SHOULD BE DESIGNED FOR WIND RESISTANCE IN ACCORDANCE WITH THE APPLICABLE EDITION OF ASCE 7. ADDITIONAL REQUIREMENTS APPLY FOR GUARANTEE COVERAGE OF ATTACHMENT TO INSULATED METAL WALL PANELS. CONTACT [coldstorage.assistance@gaf.com](mailto:coldstorage.assistance@gaf.com) FOR DETAILS.
2. A VAPOR RETARDER MAY BE USED AT THE DECK LEVEL IF THERE ARE CONCERNS WITH POTENTIAL MOISTURE ISSUES DUE TO CERTAIN CONSTRUCTION PROCESSES OR OTHER SOURCES DURING BUILDING USE.
3. REFER TO GAF SA PRIMER INSTALLATION INSTRUCTIONS FOR GENERAL GUIDELINES.
4. MAINTAIN SEPARATION BETWEEN VAPOR RETARDER AND MEMBRANE / ADHESIVE TO AVOID POTENTIAL INCOMPATIBILITY ISSUES.
5. FOR STEEL ROOF DECKS: FILL STEEL DECK FLUTES WITH CLOSED CELL SPRAY FOAM INSULATION PRIOR TO THE INSTALLATION OF ABOVE DECK INSULATION A MINIMUM OF 12" [305 mm] FROM FACE OF WALL ON EACH SIDE.

**Product:**

EverGuard PVC

**Installation:**

Cold Storage  
Systems

**Maximum**

**Warranty:**

—

**Date:**

4/23/2025

**Scale:**

Not To Scale

**Detail No.**

075419

**303C**

## IMP Wall with Coping Cap and Vapor Retarder