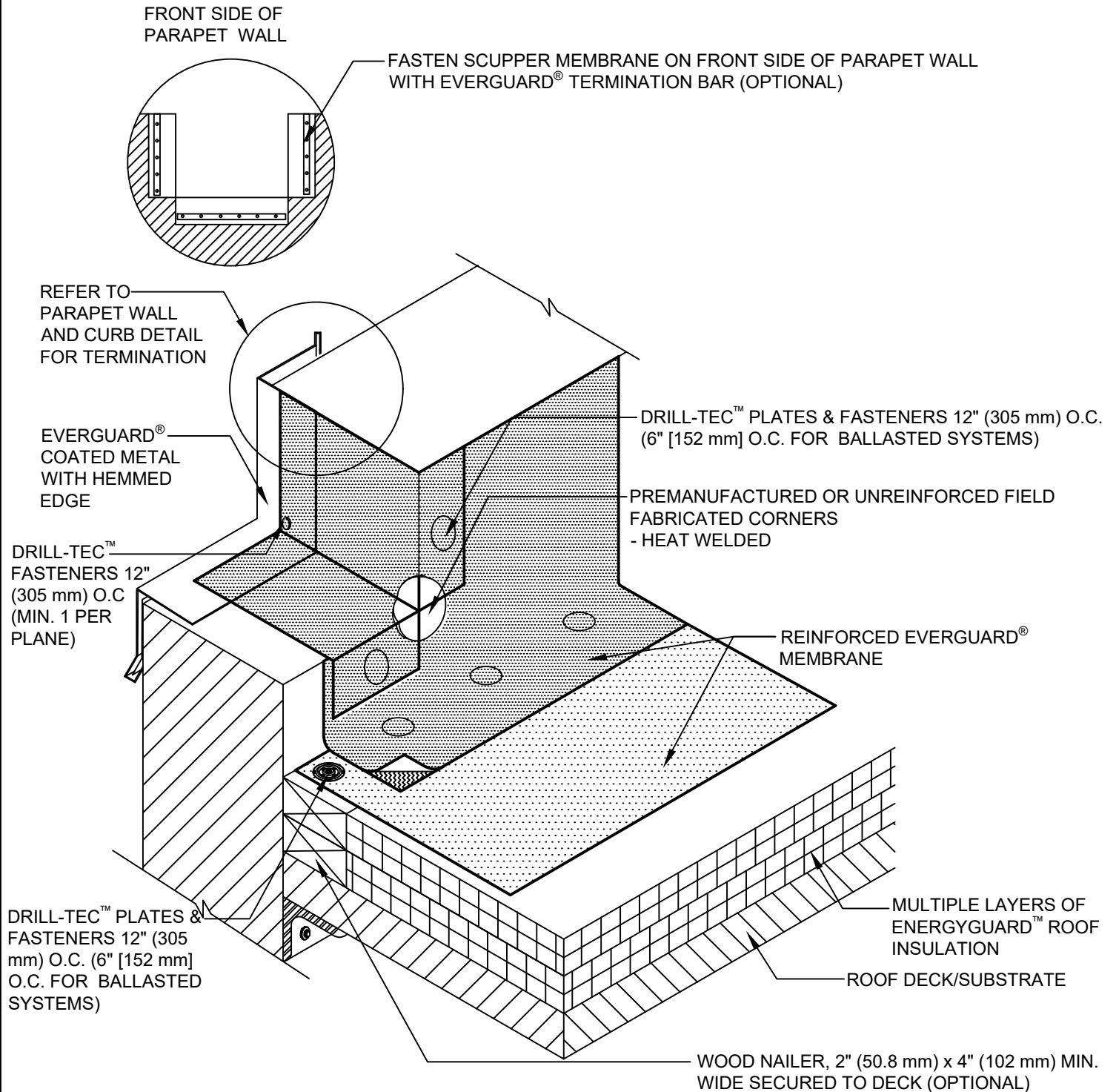


SINGLE-PLY: TPO & PVC



NOTE:

1. DETAIL TO BE USED IN CONJUNCTION WITH STANDARD GUIDE SPECIFICATION CONTAINING REQUIREMENTS FOR NAILERS, INSULATION ETC.
2. FOR INSULATION THICKNESS GREATER THAN 8" (203 mm), A COVER BOARD IS REQUIRED ON MECHANICALLY ATTACHED SYSTEMS ONLY.
3. IF EVERGUARD® FREEDOM™ MEMBRANE IS USED, BONDING ADHESIVE IS NOT NEEDED AND WALL MUST BE PRIMED.

GAF

SCUPPER - FIELD FABRICATED OPEN TOP - OVERFLOW

DRAWING #

323

THIS DETAIL APPLIES TO:

ALL SYSTEMS

ISSUE / REVISION DATE

8/24/20

SCALE

N.T.S.

LEGEND

 HEAT-WELDED