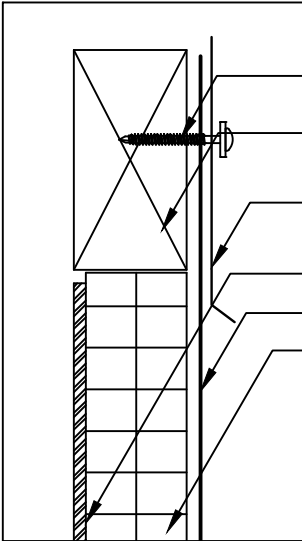
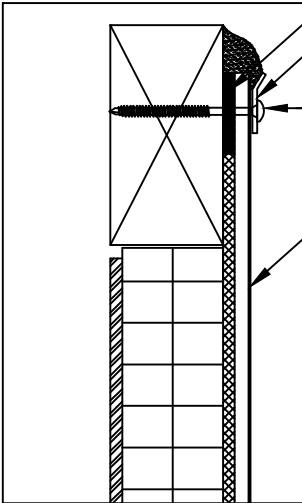


- GALVANIZED ROOF NAILS AND SEALING WASHERS FASTENED 12" (305 mm) O.C. MAX
- WOOD NAILER THICKNESS OF INSULATION
- REINFORCED EVERGUARD® MEMBRANE
- INSULATED METAL CURB
- ENERGYGUARD™ ROOF INSULATION



- DRILL-TEC™ FASTENERS AND SEALING WASHERS 12" (305 mm) O.C. MAX
- WOOD NAILER
- METAL COUNTERFLASHING OR SLIP FLASHING BY OTHERS 3" (76.2 mm) MIN. FACE.
- INSULATED METAL CURB
- REINFORCED EVERGUARD® MEMBRANE
- ENERGYGUARD™ ROOF INSULATION

NOTE: EXPOSED WALLS/CURBS MUST BE WATERPROOFED AND MAINTAINED ABOVE THE BASE FLASHING IN ORDER FOR ANY SURFACE-MOUNTED TERMINATION TO BE EFFECTIVE.



- EVERGUARD® WATER-BLOCK OR FLEXSEAL™ CAULK GRADE SEALANT
- DRILL-TEC™ TERMINATION BAR
- DRILL-TEC™ FASTENERS AND SEALING WASHERS 6" (152 mm) O.C.
- REINFORCED EVERGUARD® MEMBRANE



SKYLIGHT NON-STANDARD CURB TERMINATION

DRAWING #
318D

THIS DETAIL APPLIES TO:
ALL SYSTEMS

ISSUE / REVISION DATE
8/24/20

SCALE
N.T.S.

LEGEND

- EVERGUARD® BONDING ADHESIVE
- OPTIONAL UP TO 30" (762 mm) FLASHING HEIGHT
- FLEXSEAL™ CAULK GRADE SEALANT