

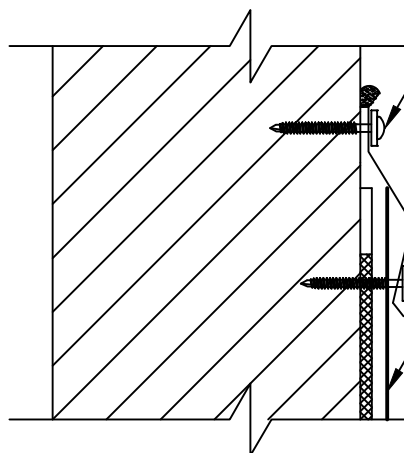
1. MECHANICAL TERMINATION

DRILL-TEC™ TERMINATION BAR FASTENED 12" (305 mm) O.C (OPTIONAL)

METAL COUNTERFLASHING (MAY BE FACE MOUNTED ALSO)

REINFORCED EVERGUARD® MEMBRANE

NOTE: EXISTING COUNTERFLASHING MUST BE IN GOOD WORKABLE CONDITION AND TIGHT TO WALL.



2. MECHANICAL TERMINATION

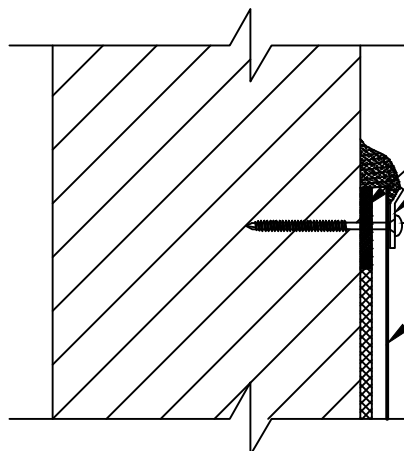
DRILL-TEC™ FASTENERS AND SEALING WASHERS 12" (305 mm) O.C.

METAL SURFACE MOUNTED COUNTERFLASHING

DRILL-TEC™ FASTENERS AND SEALING WASHERS 12" (305 mm) O.C.

REINFORCED EVERGUARD® MEMBRANE

NOTE: EXISTING COUNTERFLASHING MUST BE IN GOOD WORKABLE CONDITION AND TIGHT TO WALL.



3. MECHANICAL TERMINATION (20-YR MAX GUARANTEE)

EVERGUARD® WATER-BLOCK OR FLEXSEAL™ CAULK GRADE SEALANT

DRILL-TEC™ TERMINATION BAR

DRILL-TEC™ FASTENERS AND SEALING WASHERS 6" (152 mm) O.C.

REINFORCED EVERGUARD® MEMBRANE