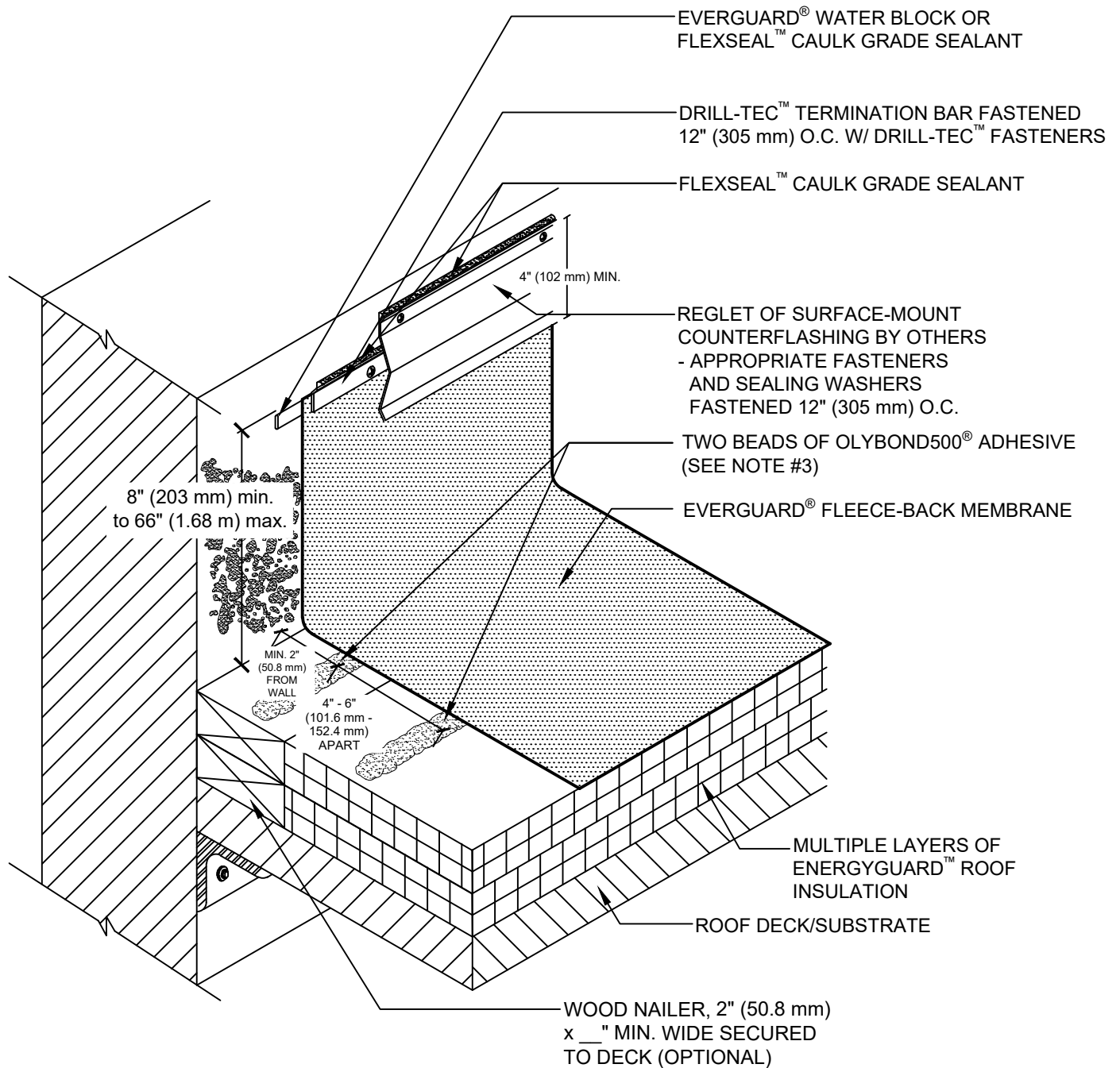


SINGLE-PLY: TPO & PVC Fleece-Back membranes



NOTE:

1. EXISTING REGLET IS ACCEPTABLE IF METAL IS IN GOOD CONDITION.
2. EXPOSED WALLS/CURBS MUST BE WATERPROOFED AND MAINTAINED ABOVE THE BASE FLASHING IN ORDER FOR ANY SURFACE-MOUNTED TERMINATION TO BE EFFECTIVE.
3. REFER TO EVERGUARD® SPEC MANUAL FOR APPROVED LRF ADHESIVES, BEAD SIZE, AND PATTERNS.

GAF

LOW RISE FOAM AT WALL ATTACHMENT

DRAWING #
306B

THIS DETAIL APPLIES TO:
ADHERED SYSTEMS

ISSUE / REVISION DATE
5/21/21

SCALE
N.T.S.

LEGEND



OLYBOND500® ADHESIVE IN SPATTER PATTERN