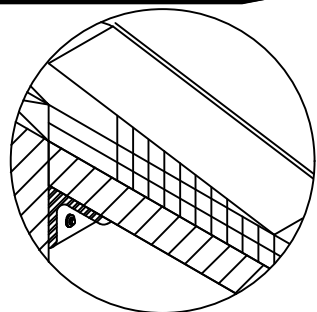


SINGLE-PLY: TPO & PVC



FOR ALTERNATE TAPERED ROOF
EDGE, USE ENERGYGUARD™
TAPERED INSULATION

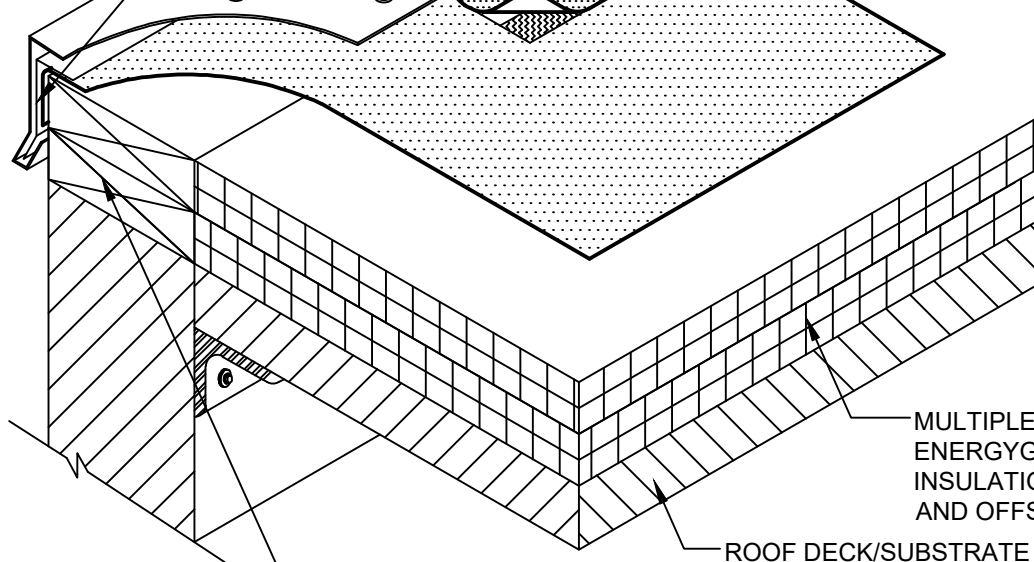
22-GAUGE CONTINUOUS
HOOK STRIP SECURED WITH
DRILL-TEC™ FASTENERS @
12" (305 mm) O.C.

RING SHANK GALVANIZED NAIL @ 4" (102 mm) O.C.
STAGGERED OR DRILL-TEC™ FASTENERS 12" (305 mm) O.C.
2" (52 mm) MINIMUM FROM OUTSIDE EDGE OF METAL.

EVERGUARD® COATED METAL EDGE

EVERGUARD® TPO UTILITY FLASHING MEMBRANE
(TPO ONLY) OR MIN. 8" (203 mm) WIDE
REINFORCED EVERGUARD® MEMBRANE

REINFORCED EVERGUARD® MEMBRANE
(PERIMETER SHEET IF REQUIRED)



MULTIPLE LAYERS OF
ENERGYGUARD™ ROOF
INSULATION, STAGGERED
AND OFFSET

ROOF DECK/SUBSTRATE

WOOD NAILER, 5/4" (31.8 mm) x 4" (102 mm)
MIN. SECURED TO DECK

NOTE:

1. FOR INSULATION THICKNESS GREATER THAN 8" (203 mm), A COVER BOARD IS REQUIRED ON MECHANICALLY FASTENED SYSTEMS ONLY.
2. 25-YEAR GUARANTEES AND ABOVE MUST USE EXTREME ACCESSORIES.
3. FOR HEAT-WELDING LAPS, USE 1.5" (38.1 mm) WELD WITH MACHINE AUTOMATIC WELDER AND (50.8 mm) WELD WITH HAND WELDER.
4. DO NOT OVERLAP ENDS OF FLASHING STRIP/COVER TAPE.

GAF

COATED METAL ROOF EDGE

DRAWING #
201B

THIS DETAIL APPLIES TO:
ADHERED SYSTEMS
BALLASTED SYSTEMS
RHINO-BOND® SYSTEMS
SELF-ADHERED SYSTEMS

ISSUE / REVISION DATE
8/24/20

SCALE
N.T.S.

LEGEND

 HEAT-WELDED