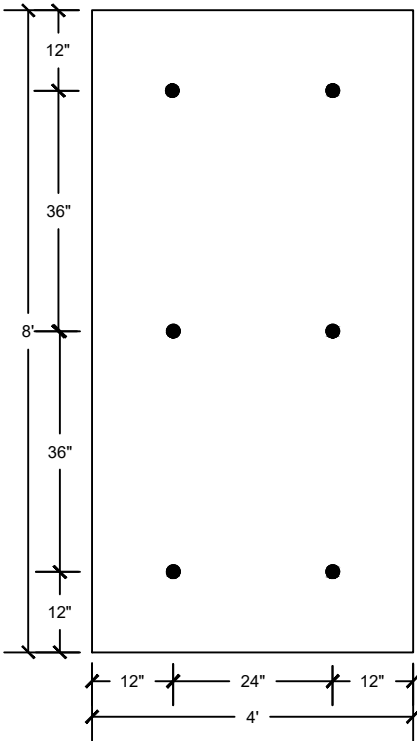
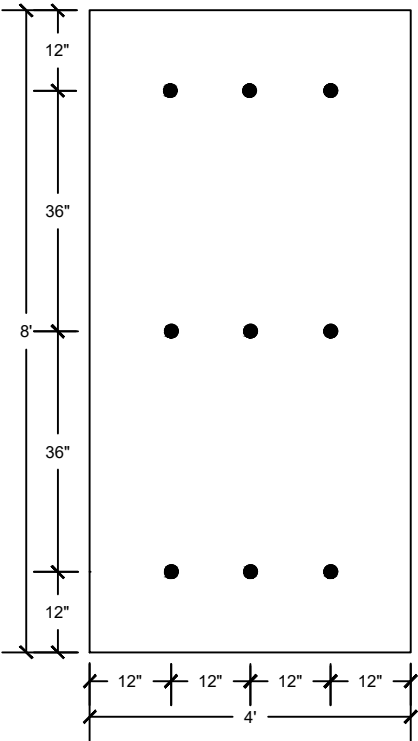


FIELD AREA



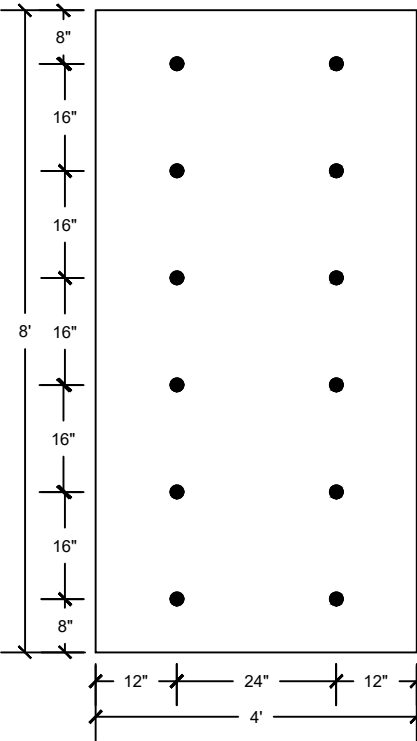
6 FASTENERS PER BOARD

PERIMETER AREA



9 FASTENERS PER BOARD

CORNER AREA



12 FASTENERS PER BOARD

NOTE:

- 1. REFERENCE SPECIFIC SYSTEM/INSULATION TYPE AND THICKNESS REQUIREMENTS.
- 2. DRILL-TEC™ RHINO-BOND® PLATE-WELDED SYSTEM IS NOT ACCEPTABLE FOR GYPSUM, CEMENTITIOUS WOOD FIBER OR OSB.
- 3. REFER TO THE RHINO-BOND® SPEC MANUAL FOR FASTENER AND DECK REQUIREMENTS.



STANDARD FASTENING PATTERN
- OVER APPROVED STEEL OR CONCRETE DECKS

DRAWING #
111A

THIS DETAIL APPLIES TO:
RHINO-BOND® SYSTEMS

ISSUE / REVISION DATE
8/17/20

SCALE
N.T.S.

LEGEND

● ● ● FASTENERS