



We
protect
what
matters
most™

Legend:

Heat Weld



Sealant



Adhesive



Foam



Product:

EverGuard TPO

Installation:

Cold Storage
Systems

Maximum

Warranty:

—

Date:

2/13/2025

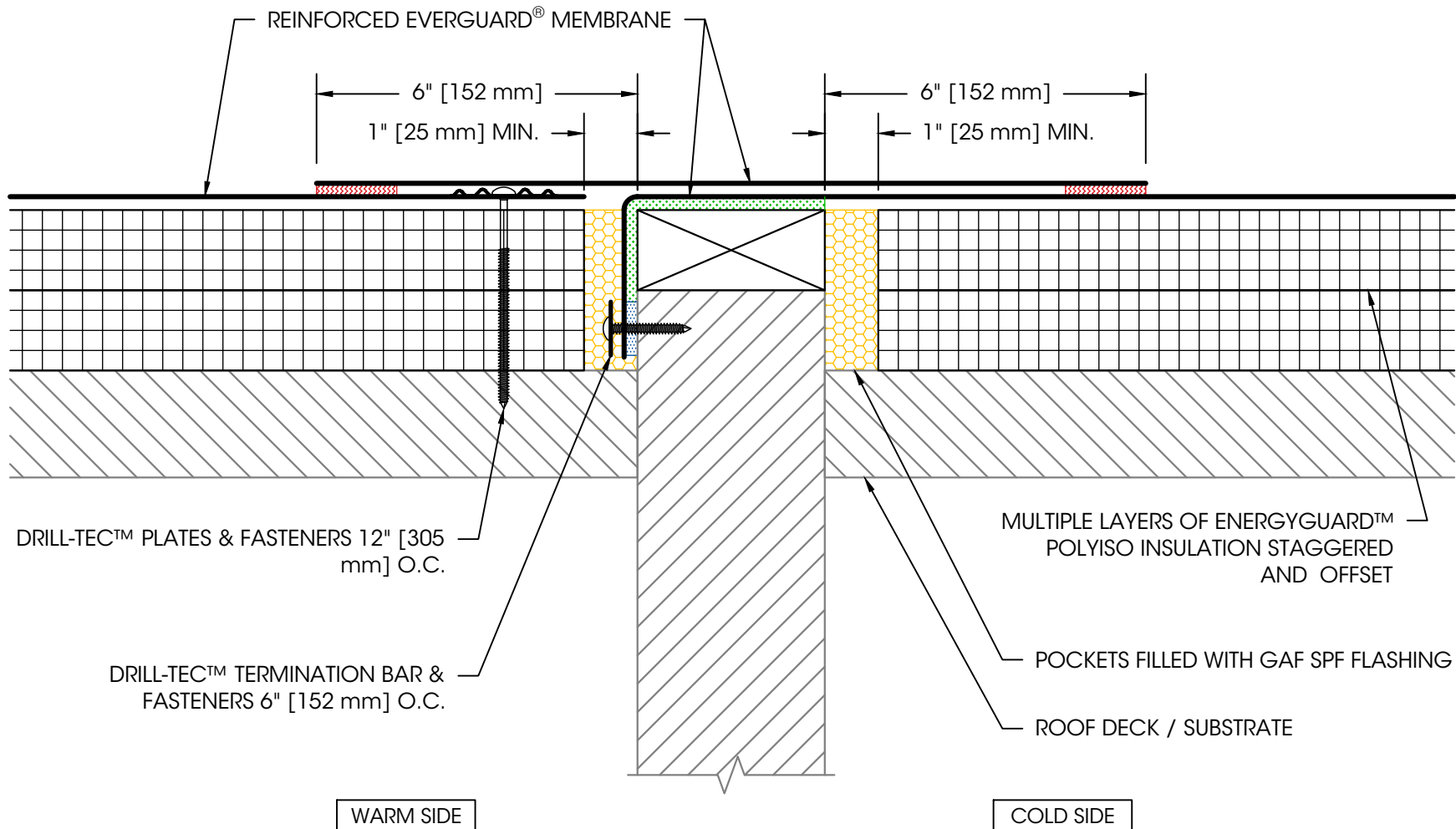
Scale:

Not To Scale

Detail No.

075423

130A



NOTES:

1. FOR STEEL ROOF DECKS: FILL STEEL DECK FLUTES WITH CLOSED CELL SPRAY FOAM INSULATION PRIOR TO THE INSTALLATION OF ABOVE DECK INSULATION A MINIMUM OF 12" [305 mm] FROM FACE OF WALL ON EACH SIDE.

Cold to Warm Transition - Wall Above Deck



We
protect
what
matters
most™

Legend:

Heat Weld



Sealant



Adhesive



Foam



Product:

EverGuard TPO

Installation:

Cold Storage
Systems

Maximum

Warranty:

—

Date:

2/13/2025

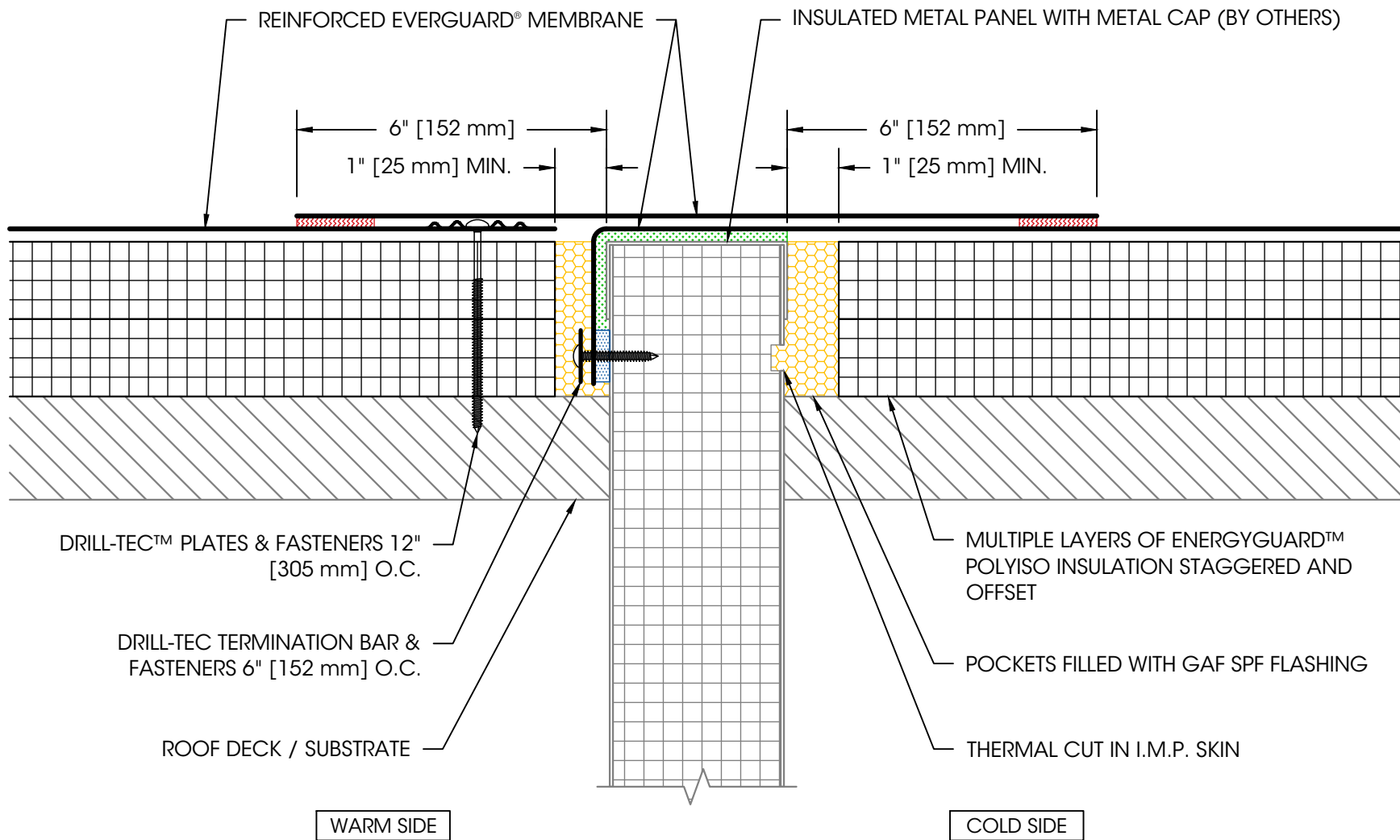
Scale:

Not To Scale

Detail No.

075423

130B



NOTES:

1. FOR STEEL ROOF DECKS: FILL STEEL DECK FLUTES WITH CLOSED CELL SPRAY FOAM INSULATION PRIOR TO THE INSTALLATION OF ABOVE DECK INSULATION A MINIMUM OF 12" [305 mm] FROM FACE OF WALL ON EACH SIDE.

Cold to Warm Transition - IMP Above Deck



We
protect
what
matters
most™

Legend:

Heat Weld



Adhesive



Product:
EverGuard TPO

Installation:
Cold Storage
Systems

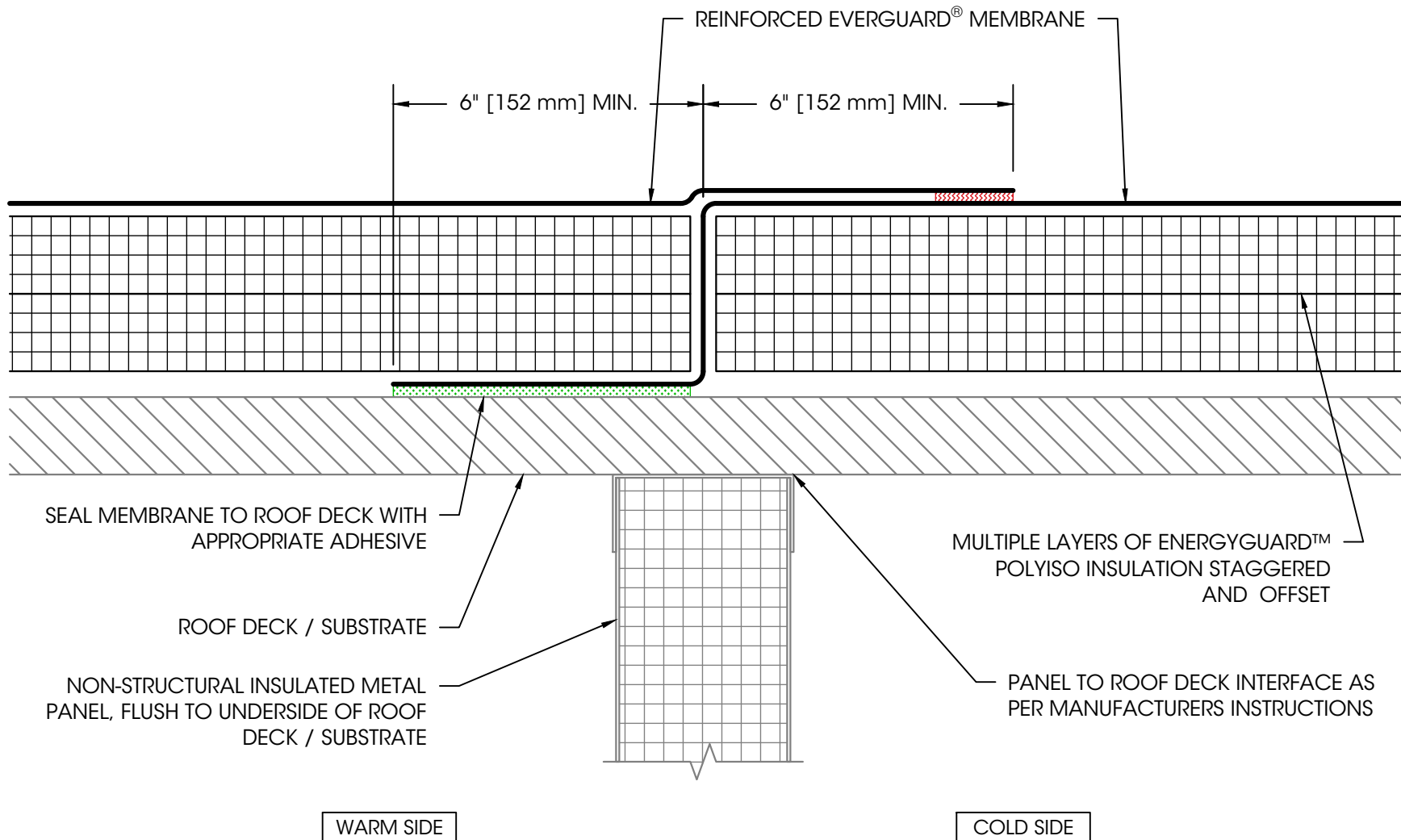
**Maximum
Warranty:**
—

Date:
2/13/2025

Scale:
Not To Scale

Detail No.
075423

130C



NOTES:

1. FOR STEEL ROOF DECKS: FILL TOPSIDE OF STEEL DECK FLUTES WITH CLOSED CELL SPRAY FOAM INSULATION PRIOR TO THE INSTALLATION OF ABOVE DECK INSULATION A MINIMUM OF 12" [305 mm] FROM FACE OF WALL ON EACH SIDE, BOTH SIDES OF WALL.
2. AIR SEAL WALL-TO-UNDERSIDE OF ROOF DECK INTERFACE AS PER ARCHITECTURAL DRAWINGS.

Cold to Warm Transition - IMP Below Deck



We
protect
what
matters
most™

Legend:

Heat Weld



Sealant



Adhesive



Foam



Product:

EverGuard TPO

Installation:

Cold Storage
Systems

Maximum

Warranty:

—

Date:

2/13/2025

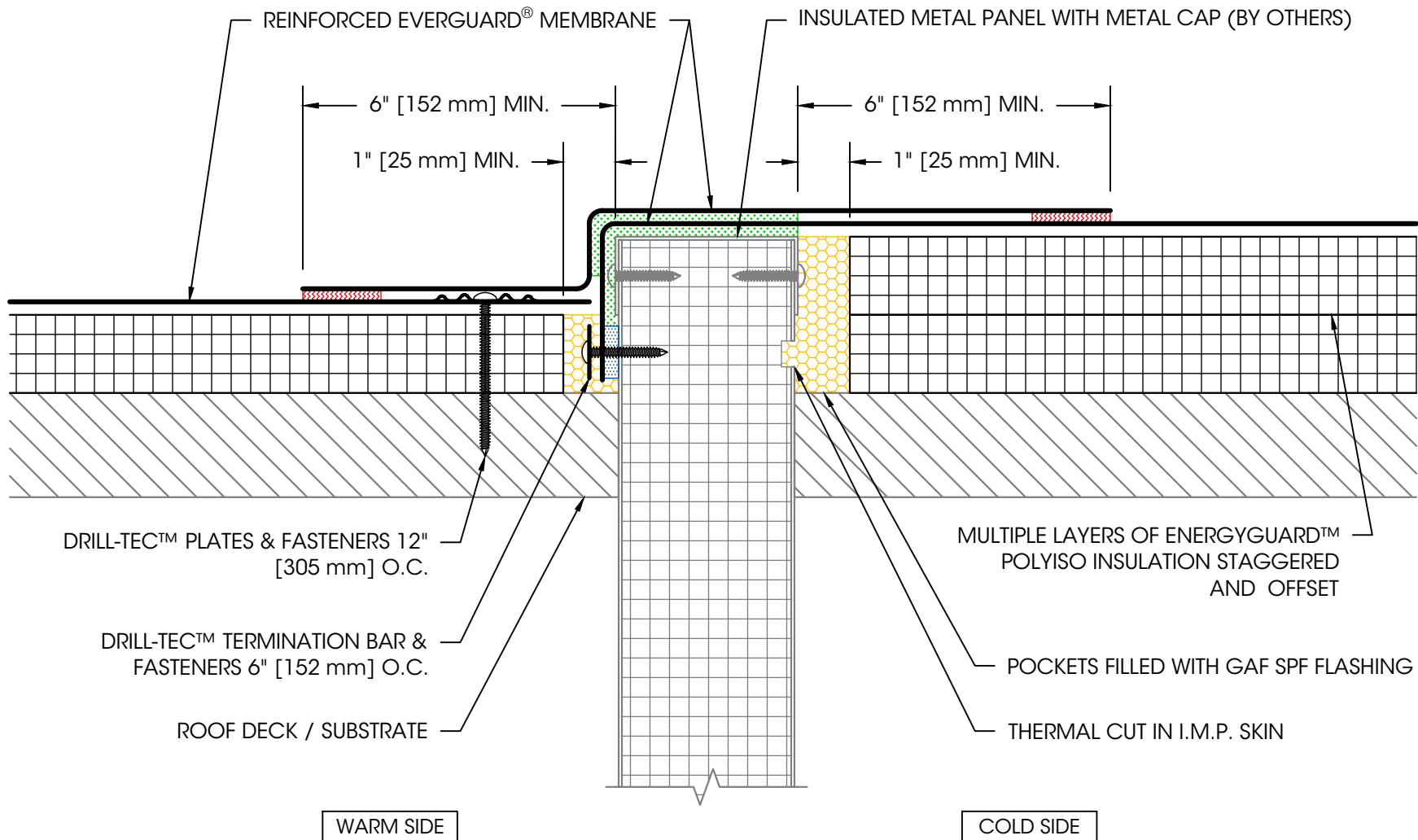
Scale:

Not To Scale

Detail No.

075423

130D



NOTES:

1. FOR STEEL ROOF DECKS: FILL STEEL DECK FLUTES WITH CLOSED CELL SPRAY FOAM INSULATION PRIOR TO THE INSTALLATION OF ABOVE DECK INSULATION A MINIMUM OF 12" [305 mm] FROM FACE OF WALL ON EACH SIDE.

Offset Cold to Warm Transition - IMP Above Deck



We
protect
what
matters
most™

Legend:
Heat Weld



Sealant



Adhesive



Foam



Product:
EverGuard TPO

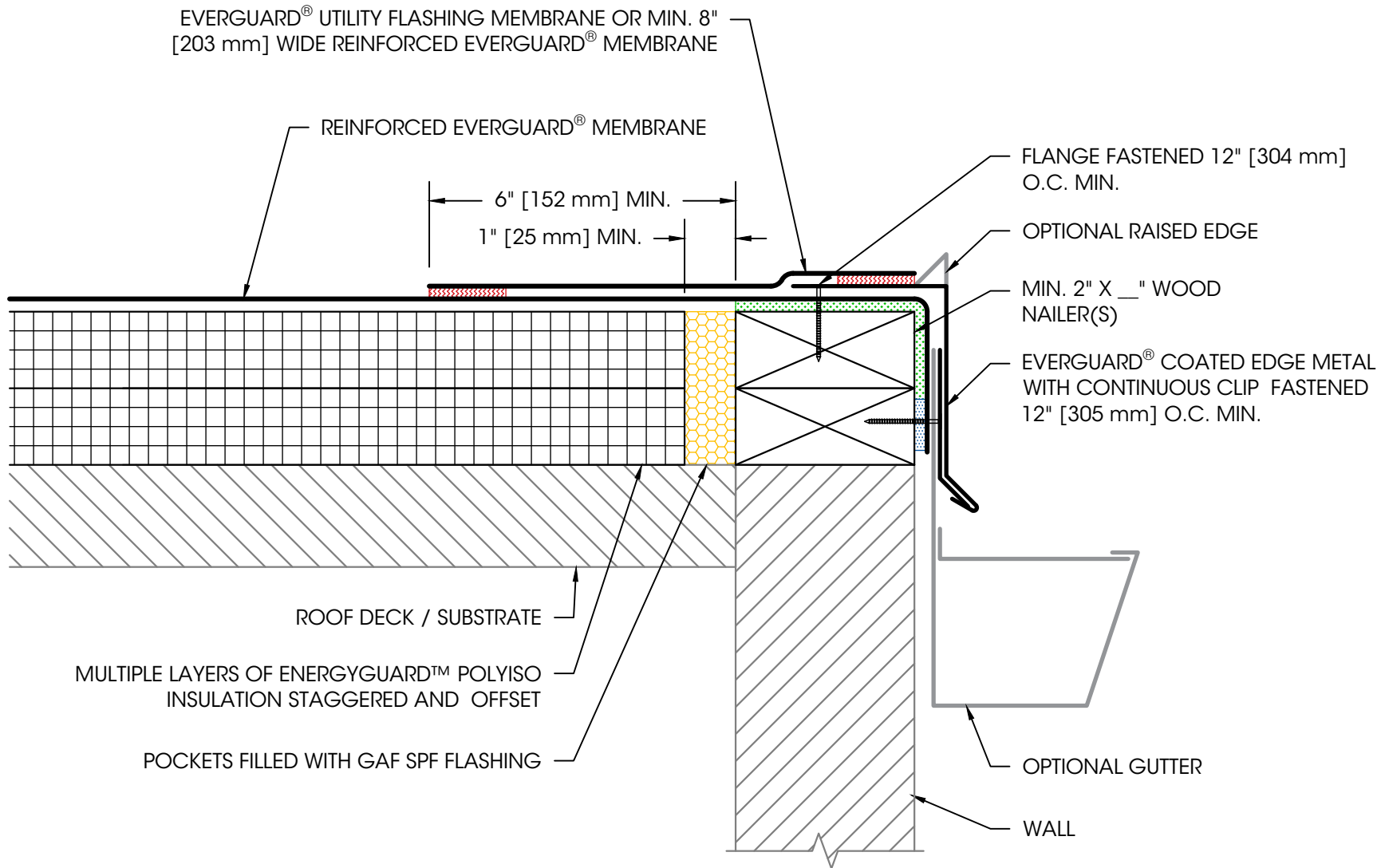
Installation:
Cold Storage
Systems

**Maximum
Warranty:**
—

Date:
8/12/2025

Scale:
Not To Scale

Detail No.
075423
201A



NOTES:

1. EDGE METAL SHOULD BE DESIGNED FOR WIND RESISTANCE IN ACCORDANCE WITH THE APPLICABLE EDITION OF ASCE 7 AND TESTED FOR CAPACITY IN ACCORDANCE WITH THE TEST METHODS IN THE APPLICABLE EDITION OF ANSI/SPRI ES-1.
2. FOR STEEL ROOF DECKS: FILL STEEL DECK FLUTES WITH CLOSED CELL SPRAY FOAM INSULATION PRIOR TO THE INSTALLATION OF ABOVE DECK INSULATION A MINIMUM OF 12" [305 mm] FROM FACE OF WALL ON EACH SIDE.

Coated Drip Edge with Flashing Strip at Wall

EVERGUARD® UTILITY FLASHING MEMBRANE OR MIN. 8" WIDE REINFORCED
EVERGUARD® TPO OR PVC MEMBRANE

REINFORCED EVERGUARD® MEMBRANE

6" MIN.

1" MIN.

FLANGE FASTENED 12" O.C. MIN.

CONTINUOUS BEAD OF SEALANT
BELOW METAL PANEL CAP (BY
OTHERS)

OPTIONAL RAISED EDGE

EVERGUARD® COATED EDGE
METAL WITH CONTINUOUS CLIP
FASTENED 12" O.C. MIN.

SEE ROOF ASSEMBLY DETAIL FOR SYSTEM INFORMATION

MULTIPLE LAYERS OF ENERGYGUARD™ POLYISO
INSULATION STAGGERED AND OFFSET

POCKETS FILLED WITH GAF SPF FLASHING

THERMAL CUT IN I.M.P. SKIN

OPTIONAL GUTTER

INSULATED METAL PANEL WITH
METAL CAP (BY OTHERS)

NOTES:

1. EDGE METAL SHOULD BE DESIGNED FOR WIND RESISTANCE IN ACCORDANCE WITH THE APPLICABLE EDITION OF ASCE 7. ADDITIONAL REQUIREMENTS APPLY FOR GUARANTEE COVERAGE OF ATTACHMENT TO INSULATED METAL WALL PANELS. CONTACT coldstorage.assistance@gaf.com FOR DETAILS.
2. FOR STEEL ROOF DECKS: FILL STEEL DECK FLUTES WITH CLOSED CELL SPRAY FOAM INSULATION PRIOR TO THE INSTALLATION OF ABOVE DECK INSULATION A MINIMUM OF 12" FROM FACE OF WALL ON EACH SIDE.



We
protect
what
matters
most™

Legend:

Heat Weld



Sealant



Adhesive



Foam



Product:

EverGuard TPO

Installation:

Cold Storage
Systems

Maximum Warranty:

—

Date:

2/14/2025

Scale:

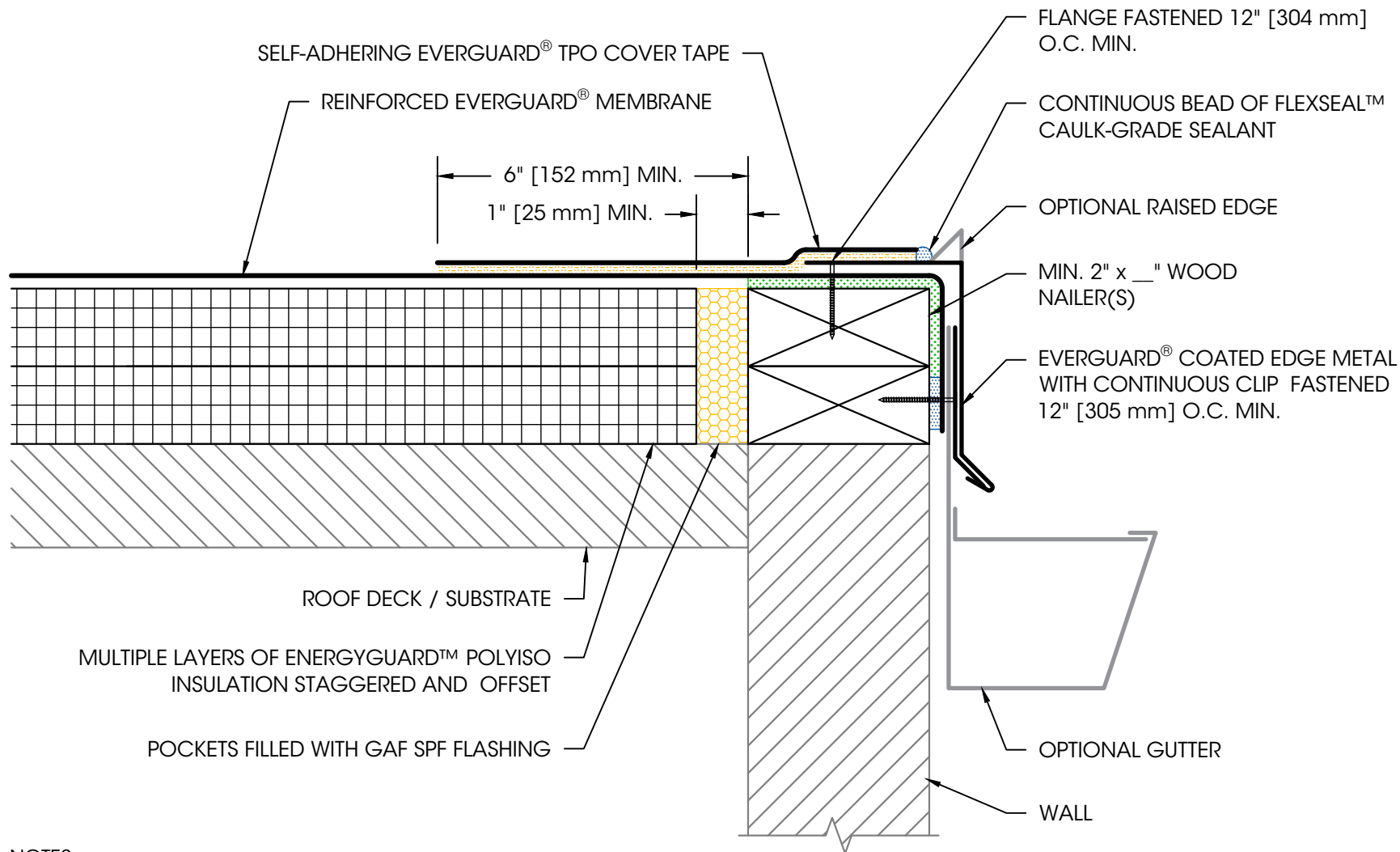
Not To Scale

Detail No.

075423

201C

Coated Drip Edge with Flashing Strip at IMP



NOTES:

1. CLEAN METAL AND MEMBRANE WITH EVERGUARD® TPO SEAM CLEANER AND ALLOW TO DRY. ONCE DRY, PRIME METAL AND MEMBRANE WITH EVERGUARD® TPO PRIMER BEFORE INSTALLING EVERGUARD® TPO COVER TAPE.
2. EDGE METAL SHOULD BE DESIGNED FOR WIND RESISTANCE IN ACCORDANCE WITH THE APPLICABLE EDITION OF ASCE 7 AND TESTED FOR CAPACITY IN ACCORDANCE WITH THE TEST METHODS IN THE APPLICABLE EDITION OF ANSI/SPRI ES-1.
3. FOR STEEL ROOF DECKS: FILL STEEL DECK FLUTES WITH CLOSED CELL SPRAY FOAM INSULATION PRIOR TO THE INSTALLATION OF ABOVE DECK INSULATION A MINIMUM OF 12" [305 mm] FROM FACE OF WALL ON EACH SIDE.

Coated Drip Edge with Cover Tape at Wall



**We
protect
what
matters
most™**

Legend:

Primer



Sealant



Adhesive



Foam



Product:

EverGuard TPO

Installation:

Cold Storage
Systems

Maximum

Warranty:

—

Date:

2/14/2025

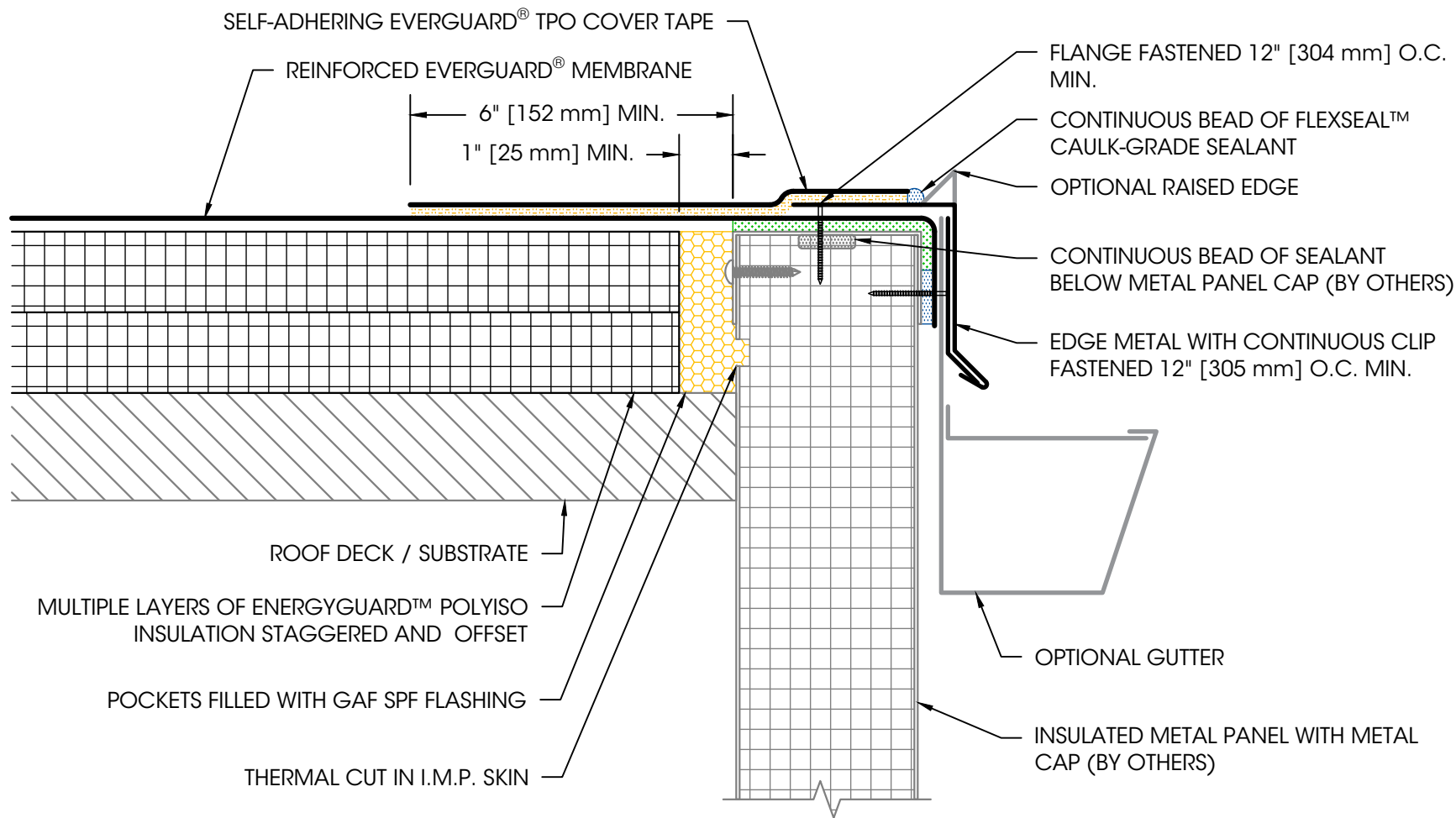
Scale:

Not To Scale

Detail No.

075423

202C



NOTES:

1. CLEAN METAL AND MEMBRANE WITH EVERGUARD® TPO SEAM CLEANER AND ALLOW TO DRY. ONCE DRY, PRIME METAL AND MEMBRANE WITH EVERGUARD® TPO PRIMER BEFORE INSTALLING EVERGUARD® TPO COVER TAPE.
2. EDGE METAL SHOULD BE DESIGNED FOR WIND RESISTANCE IN ACCORDANCE WITH THE APPLICABLE EDITION OF ASCE 7. ADDITIONAL REQUIREMENTS APPLY FOR GUARANTEE COVERAGE OF ATTACHMENT TO INSULATED METAL WALL PANELS. CONTACT coldstorage.assistance@gaf.com FOR DETAILS.
3. FOR STEEL ROOF DECKS: FILL STEEL DECK FLUTES WITH CLOSED CELL SPRAY FOAM INSULATION PRIOR TO THE INSTALLATION OF ABOVE DECK INSULATION A MINIMUM OF 12" [305 mm] FROM FACE OF WALL.

Coated Drip Edge with Cover Tape at IMP



**We
protect
what
matters
most™**

Legend:

Primer



Sealant



Adhesive



Foam



Product:

EverGuard TPO

Installation:

Cold Storage
Systems

Maximum Warranty:

—

Date:

2/14/2025

Scale:

Not To Scale

Detail No.

075423

203D



We
protect
what
matters
most™

Legend:

Sealant



Adhesive



Foam



Product:

EverGuard TPO

Installation:

Cold Storage
Systems

Maximum

Warranty:

—

Date:

2/14/2025

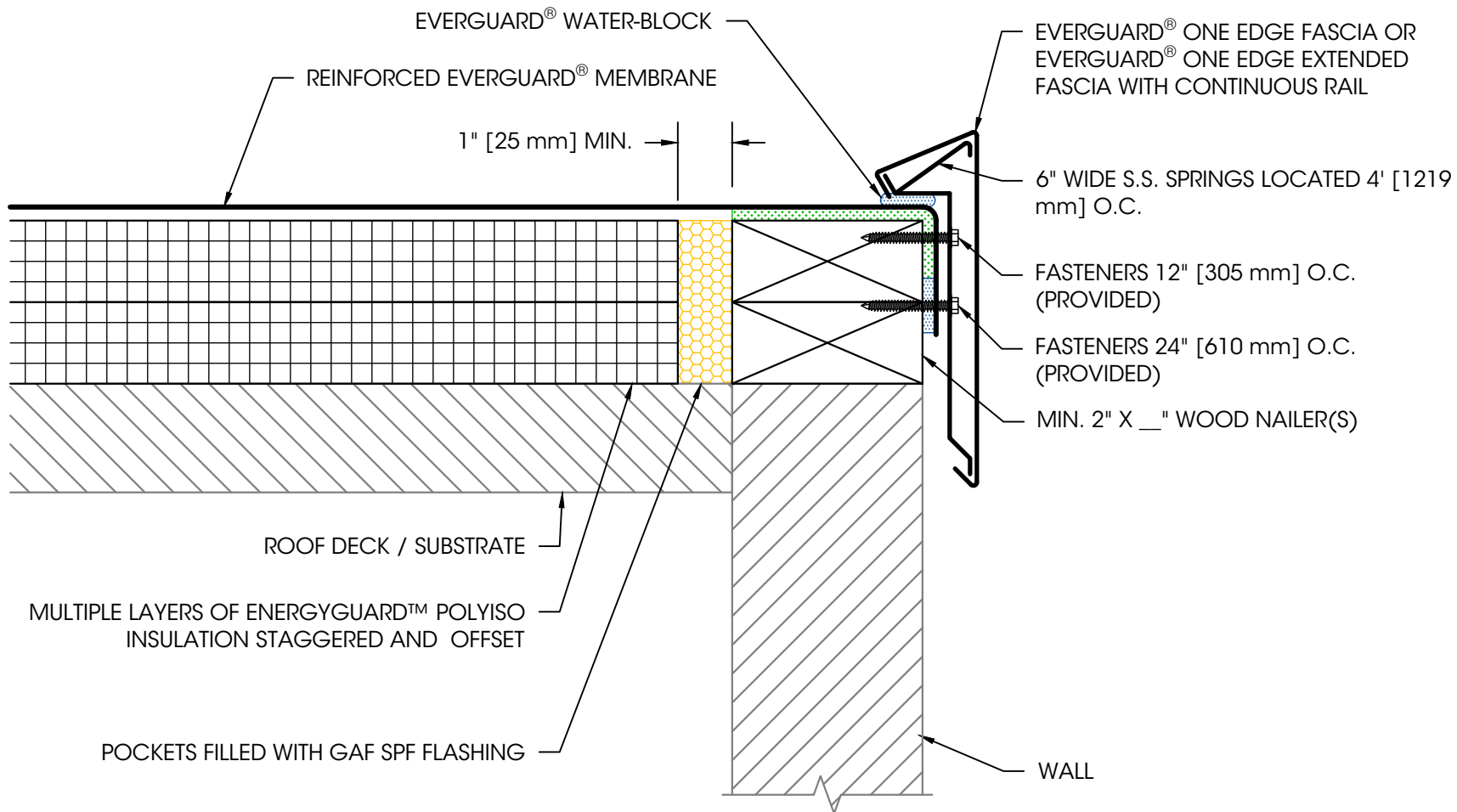
Scale:

Not To Scale

Detail No.

075423

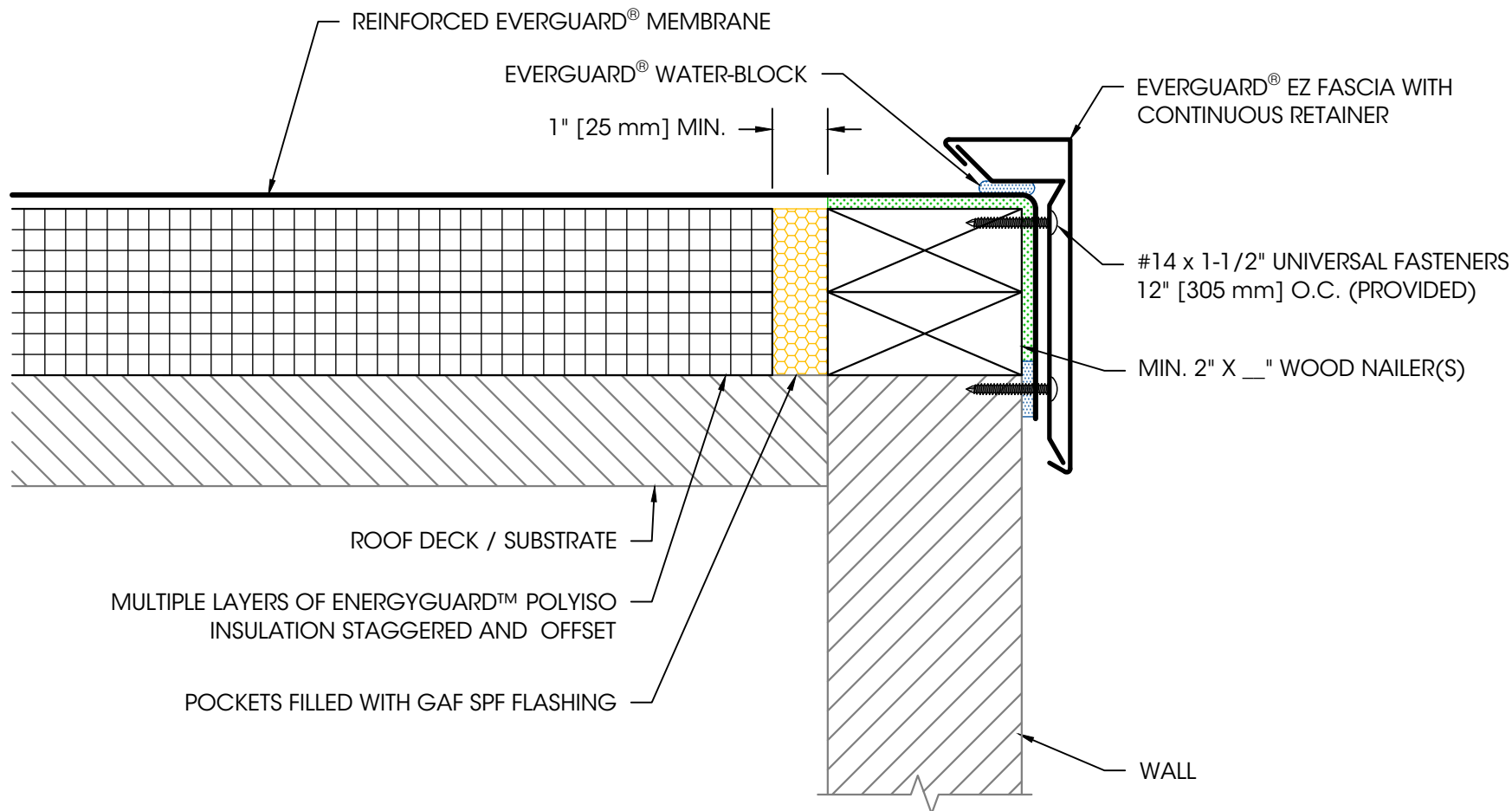
205



NOTES:

1. EDGE METAL SHOULD BE DESIGNED FOR WIND RESISTANCE IN ACCORDANCE WITH THE APPLICABLE EDITION OF ASCE 7 AND TESTED FOR CAPACITY IN ACCORDANCE WITH THE TEST METHODS IN THE APPLICABLE EDITION OF ANSI/SPRI ES-1.
2. FOR STEEL ROOF DECKS: FILL STEEL DECK FLUTES WITH CLOSED CELL SPRAY FOAM INSULATION PRIOR TO THE INSTALLATION OF ABOVE DECK INSULATION A MINIMUM OF 12" [305 mm] FROM FACE OF WALL.

EverGuard One Edge Fascia



NOTES:

1. EDGE METAL SHOULD BE DESIGNED FOR WIND RESISTANCE IN ACCORDANCE WITH THE APPLICABLE EDITION OF ASCE 7 AND TESTED FOR CAPACITY IN ACCORDANCE WITH THE TEST METHODS IN THE APPLICABLE EDITION OF ANSI/SPRI ES-1.
2. FOR STEEL ROOF DECKS: FILL STEEL DECK FLUTES WITH CLOSED CELL SPRAY FOAM INSULATION PRIOR TO THE INSTALLATION OF ABOVE DECK INSULATION A MINIMUM OF 12" [305 mm] FROM FACE OF WALL.

EverGuard EZ Fascia



**We
protect
what
matters
most™**

Legend:

Sealant



Adhesive



Foam



Product:
EverGuard TPO

Installation:
Cold Storage
Systems

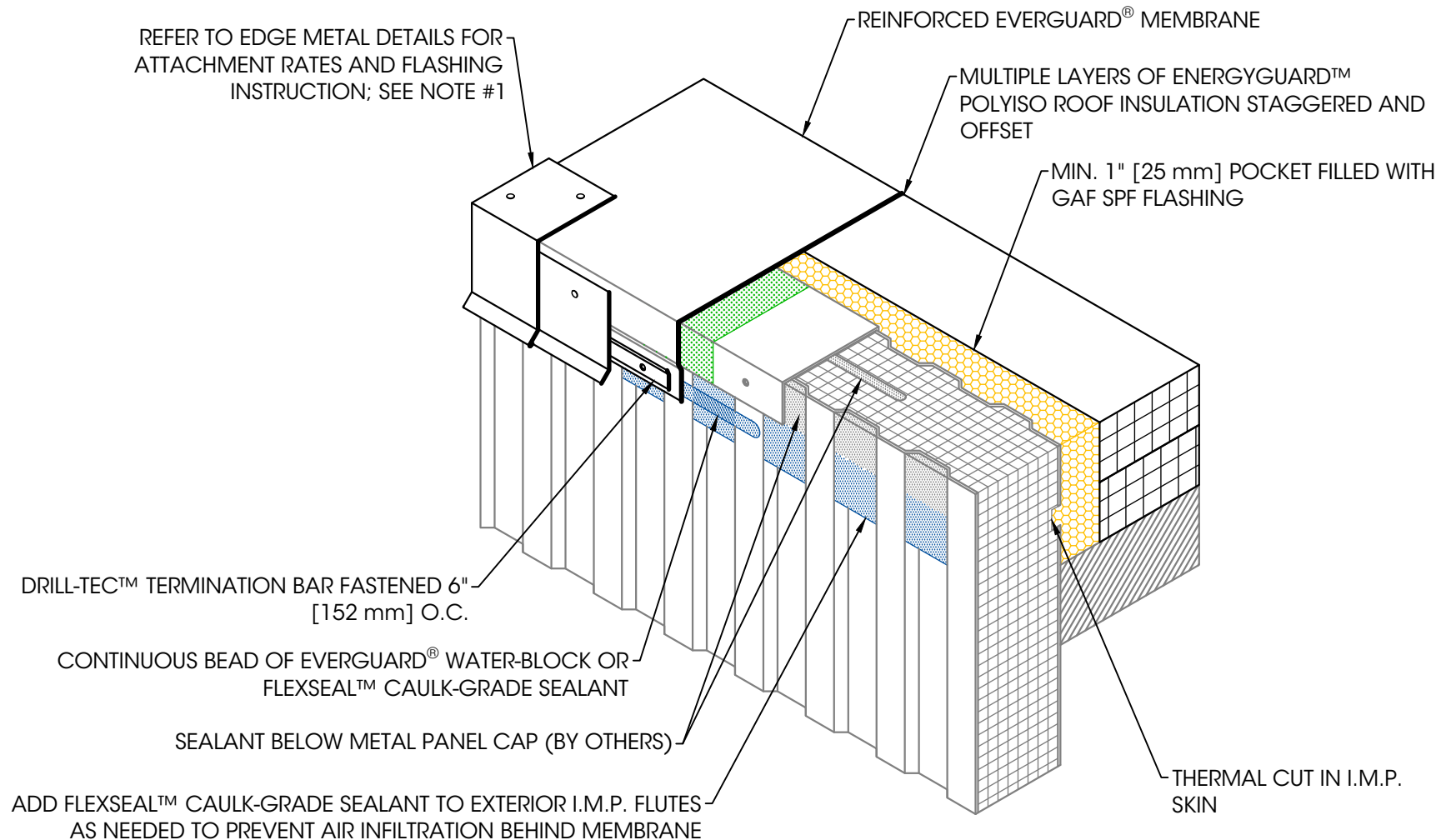
**Maximum
Warranty:**
—

Date:
2/14/2025

Scale:
Not To Scale

Detail No.
075423

232E



NOTES:

1. EDGE METAL SHOULD BE DESIGNED FOR WIND RESISTANCE IN ACCORDANCE WITH THE APPLICABLE EDITION OF ASCE 7. ADDITIONAL REQUIREMENTS APPLY FOR GUARANTEE COVERAGE OF ATTACHMENT TO INSULATED METAL WALL PANELS. CONTACT coldstorage.assistance@gaf.com FOR DETAILS.
2. FOR STEEL ROOF DECKS: FILL STEEL DECK FLUTES WITH CLOSED CELL SPRAY FOAM INSULATION PRIOR TO THE INSTALLATION OF ABOVE DECK INSULATION A MINIMUM OF 12" [305 mm] FROM FACE OF WALL.

Preparation of IMP Walls for Edge Termination



We
protect
what
matters
most™

Legend:

Sealant

Adhesive

Foam

Product:

EverGuard TPO

Installation:

Cold Storage
Systems

Maximum Warranty:

—

Date:

9/12/2025

Scale:

Not To Scale

Detail No.
075423

237



We
protect
what
matters
most™

Legend:

Heat Weld



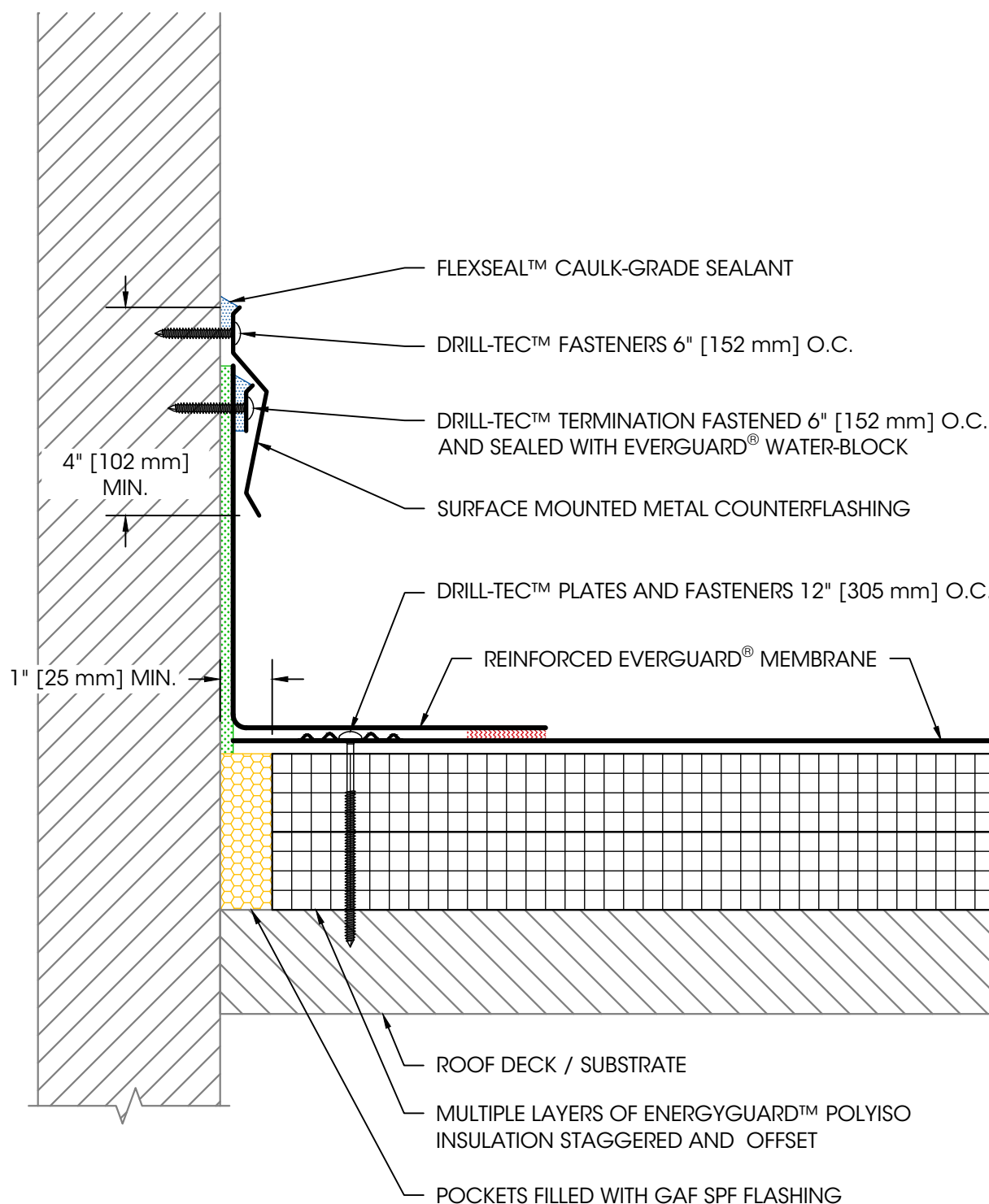
Sealant



Adhesive



Foam



NOTES:

1. EXPOSED WALLS AND CURBS MUST BE WATERPROOFED AND MAINTAINED ABOVE THE BASE FLASHING IN ORDER FOR ANY SURFACE MOUNTED TERMINATION TO BE EFFECTIVE.
2. FOR STEEL ROOF DECKS: FILL STEEL DECK FLUTES WITH CLOSED CELL SPRAY FOAM INSULATION PRIOR TO THE INSTALLATION OF ABOVE DECK INSULATION A MINIMUM OF 12" [305 mm] FROM FACE OF WALL ON EACH SIDE.

Product:

EverGuard TPO

Installation:

Cold Storage
Systems

Maximum

Warranty:

—

Date:

2/14/2025

Scale:

Not To Scale

Detail No.

075423

301B

Wall Flashing with Surface Mounted Counterflashing



We
protect
what
matters
most™

Legend:

Heat Weld



Sealant



Adhesive



Foam



Product:

EverGuard TPO

Installation:

Cold Storage
Systems

**Maximum
Warranty:**

—

Date:

2/14/2025

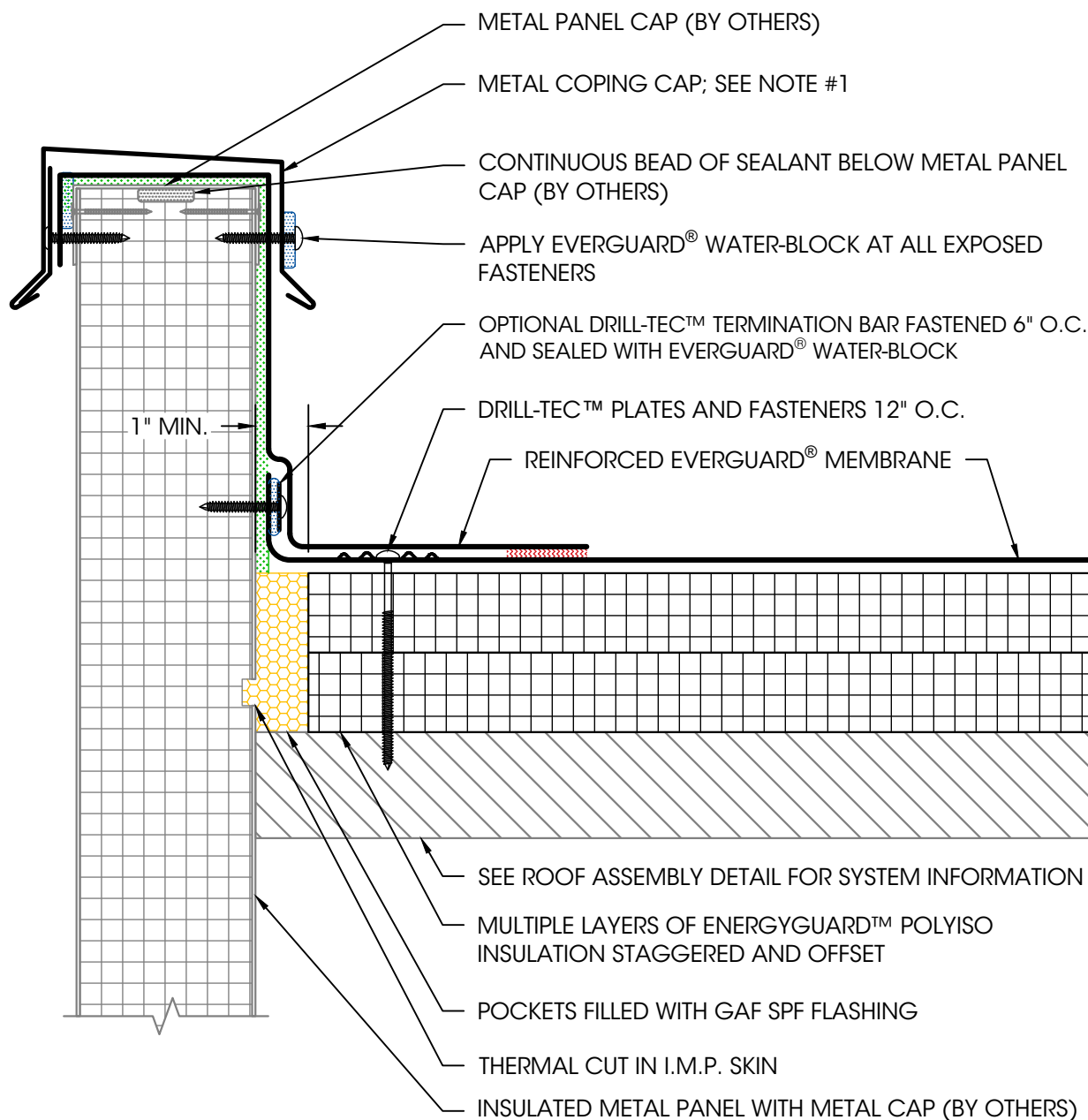
Scale:

Not To Scale

Detail No.

075423

303B



NOTES:

1. EDGE METAL SHOULD BE DESIGNED FOR WIND RESISTANCE IN ACCORDANCE WITH THE APPLICABLE EDITION OF ASCE 7. ADDITIONAL REQUIREMENTS APPLY FOR GUARANTEE COVERAGE OF ATTACHMENT TO INSULATED METAL WALL PANELS. CONTACT coldstorage.assistance@gaf.com FOR DETAILS.
2. FOR STEEL ROOF DECKS: FILL STEEL DECK FLUTES WITH CLOSED CELL SPRAY FOAM INSULATION PRIOR TO THE INSTALLATION OF ABOVE DECK INSULATION A MINIMUM OF 12" FROM FACE OF WALL ON EACH SIDE.

IMP Wall Flashing with Coping Cap



We
protect
what
matters
most™

Legend:

Heat Weld



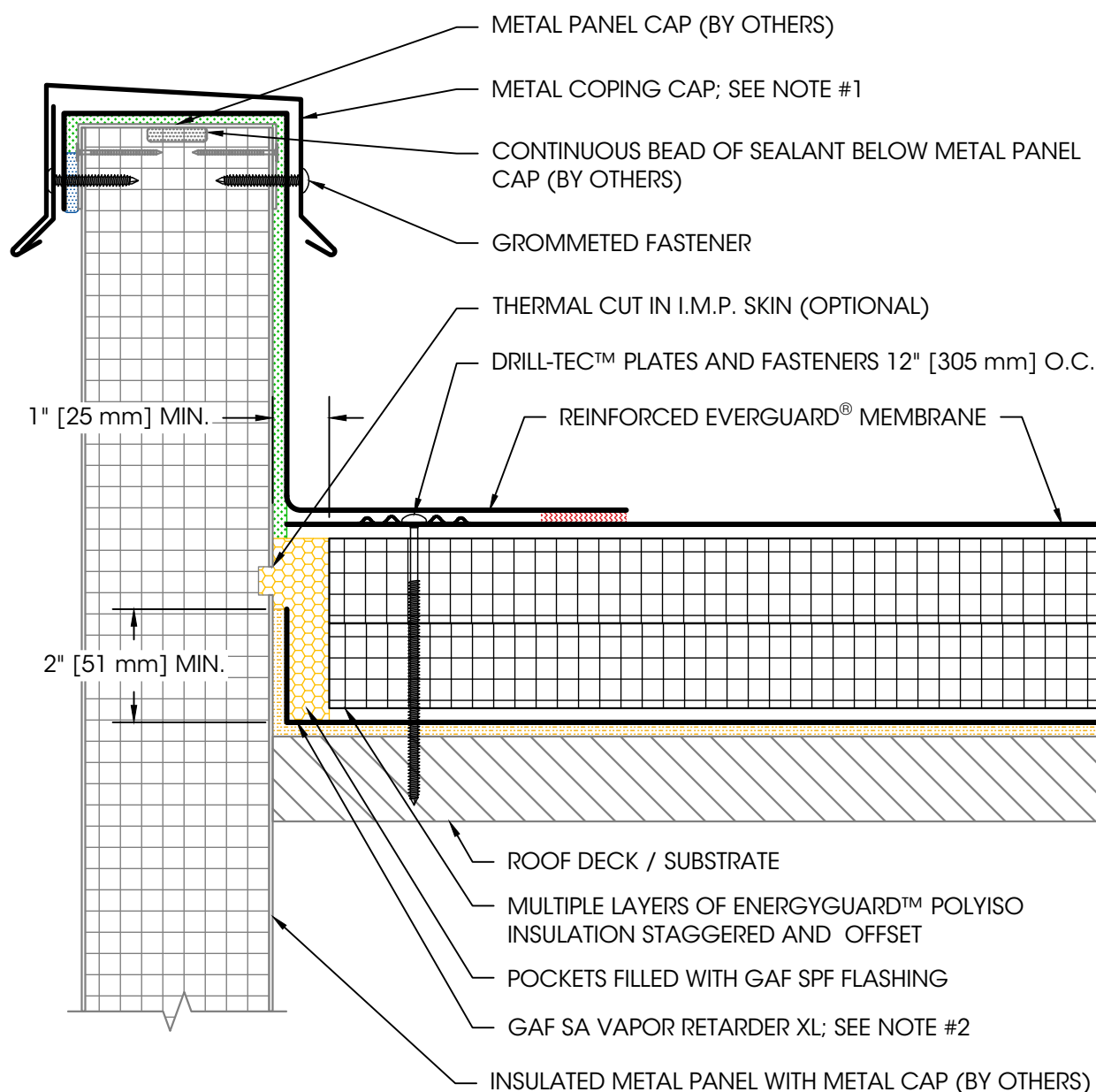
Sealant



Adhesive



Foam



NOTES:

1. EDGE METAL SHOULD BE DESIGNED FOR WIND RESISTANCE IN ACCORDANCE WITH THE APPLICABLE EDITION OF ASCE 7. ADDITIONAL REQUIREMENTS APPLY FOR GUARANTEE COVERAGE OF ATTACHMENT TO INSULATED METAL WALL PANELS. CONTACT coldstorage.assistance@gaf.com FOR DETAILS.
2. A VAPOR RETARDER MAY BE USED AT THE DECK LEVEL IF THERE ARE CONCERNS WITH POTENTIAL MOISTURE ISSUES DUE TO CERTAIN CONSTRUCTION PROCESSES OR OTHER SOURCES DURING BUILDING USE.
3. REFER TO GAF SA PRIMER INSTALLATION INSTRUCTIONS FOR GENERAL GUIDELINES.
4. MAINTAIN SEPARATION BETWEEN VAPOR RETARDER AND MEMBRANE / ADHESIVE TO AVOID POTENTIAL INCOMPATIBILITY ISSUES.
5. FOR STEEL ROOF DECKS: FILL STEEL DECK FLUTES WITH CLOSED CELL SPRAY FOAM INSULATION PRIOR TO THE INSTALLATION OF ABOVE DECK INSULATION A MINIMUM OF 12" [305 mm] FROM FACE OF WALL ON EACH SIDE.

Product:

EverGuard TPO

Installation:

Cold Storage
Systems

Maximum

Warranty:

—

Date:

2/14/2025

Scale:

Not To Scale

Detail No.

075423

303C

IMP Wall with Coping Cap and Vapor Retarder



We
protect
what
matters
most™

Legend:

Heat Weld



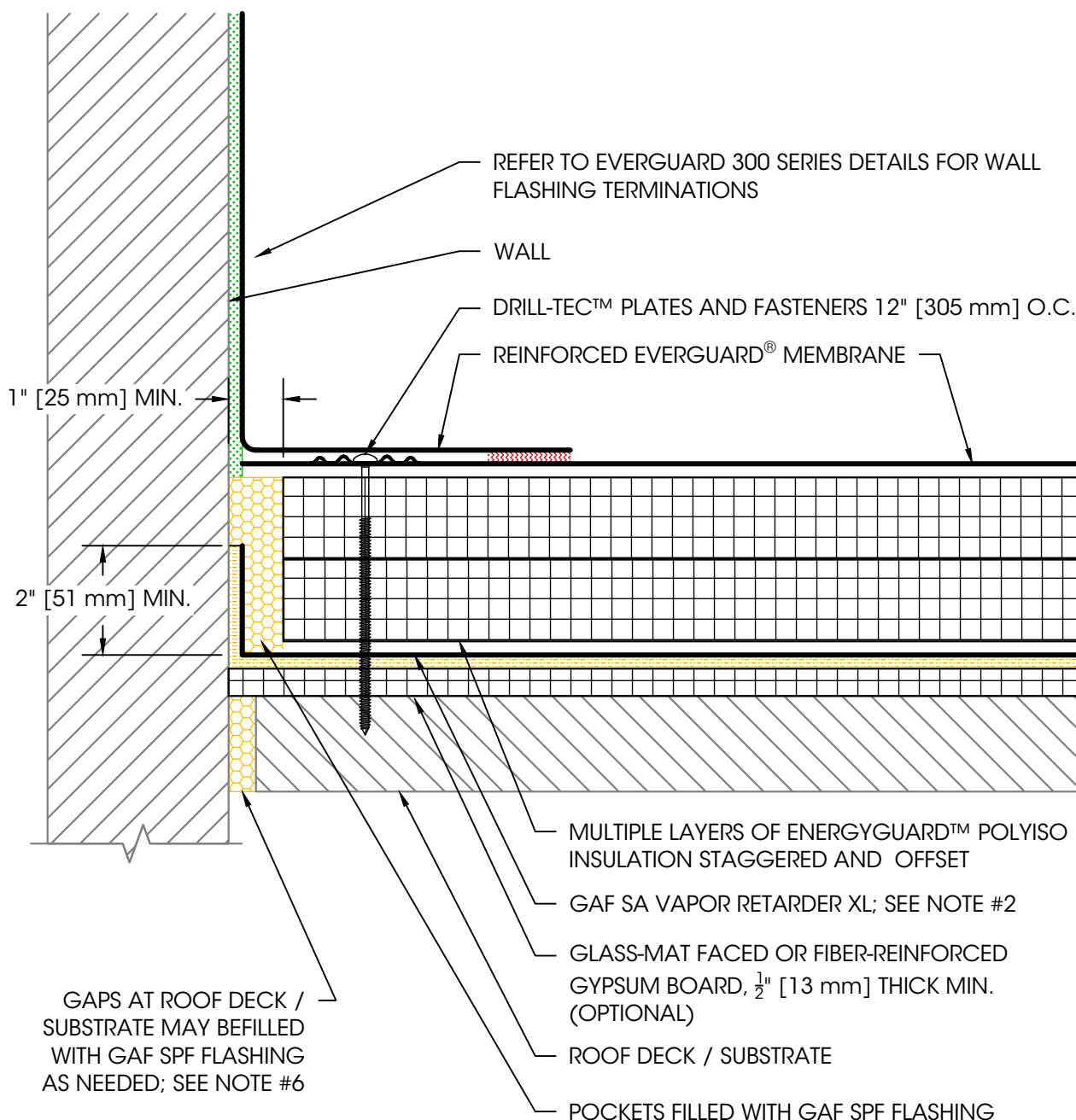
Sealant



Adhesive



Foam



NOTES:

1. USE DETAIL IN CONJUNCTION WITH THE STANDARD FLASHING AND TERMINATION DETAILS FOR THE APPROVED ROOF SYSTEM.
2. A VAPOR RETARDER MAY BE USED AT THE DECK LEVEL IF THERE ARE CONCERNS WITH POTENTIAL MOISTURE ISSUES DUE TO CERTAIN CONSTRUCTION PROCESSES OR OTHER SOURCES DURING BUILDING USE.
3. REFER TO GAF SA PRIMER INSTALLATION INSTRUCTIONS FOR GENERAL GUIDELINES.
4. MAINTAIN SEPARATION BETWEEN VAPOR RETARDER AND MEMBRANE / ADHESIVE TO AVOID POTENTIAL INCOMPATIBILITY ISSUES.
5. FOR STEEL ROOF DECKS: FILL STEEL DECK FLUTES WITH CLOSED CELL SPRAY FOAM INSULATION PRIOR TO THE INSTALLATION OF ABOVE DECK INSULATION A MINIMUM OF 12" [305 mm] FROM FACE OF WALL ON EACH SIDE.
6. WALL TO ROOF DECK INTERFACE MUST BE FULLY AIR SEALED.

Product:

EverGuard TPO

Installation:

Cold Storage
Systems

Maximum

Warranty:

—

Date:

2/14/2025

Scale:

Not To Scale

Detail No.

075423

309

Vapor Retarder Termination at Wall



We
protect
what
matters
most™

Legend:

Heat Weld



Sealant



Foam



REFER TO EVERGUARD 300 SERIES DETAILS FOR WALL FLASHING TERMINATIONS

UNREINFORCED EVERGUARD MEMBRANE FLASHING, FULLY HEAT WELDED AT OUTER EDGE AND INNER OPENING

DRILL-TEC™ PLATES AND FASTENERS 12" [305 mm] O.C. MAX.

FIELD FABRICATED CORNERS USING UNREINFORCED EVERGUARD® DETAILING MEMBRANE (OPTION #1)

FIELD FABRICATED SCUPPER USING EVERGUARD® COATED METAL

APPLY FLEXSEAL™ CAULK-GRADE SEALANT BEHIND ENTIRE SCUPPER OPENING

APPLY EVERGUARD® WATER-BLOCK BEHIND ENTIRE SCUPPER OPENING

FACTORY FABRICATED EVERGUARD® OUTSIDE CORNER ACCESSORY (OPTION #2)

DRILL-TEC™ PLATES AND FASTENERS 12" [305 mm] O.C. MAX. (6" [152 mm] O.C. MAX. FOR BALLASTED SYSTEMS)

REINFORCED EVERGUARD® MEMBRANE

1" [25 mm] MIN.

POCKETS FILLED WITH GAF SPF FLASHING

MULTIPLE LAYERS OF ENERGYGUARD™ ROOF INSULATION STAGGERED & OFFSET

ROOF DECK / SUBSTRATE

NOTES:

1. FOR STEEL ROOF DECKS: FILL STEEL DECK FLUTES WITH CLOSED CELL SPRAY FOAM INSULATION PRIOR TO THE INSTALLATION OF ABOVE DECK INSULATION A MINIMUM OF 12" [305 mm] FROM FACE OF WALL ON EACH SIDE.
2. ALL (4) ROOF-SIDE CORNERS OF SCUPPER MUST BE COMPLETELY SEALED USING EVERGUARD® UNREINFORCED DETAILING MEMBRANE OR EVERGUARD® PREFORMED CORNER ACCESSORIES.
3. SCUPPER MUST BE SEALED OFF ON EXTERIOR FACE OF BUILDING.

Product:

EverGuard TPO

Installation:

Cold Storage Systems

Maximum

Warranty:

—

Date:

2/14/2025

Scale:

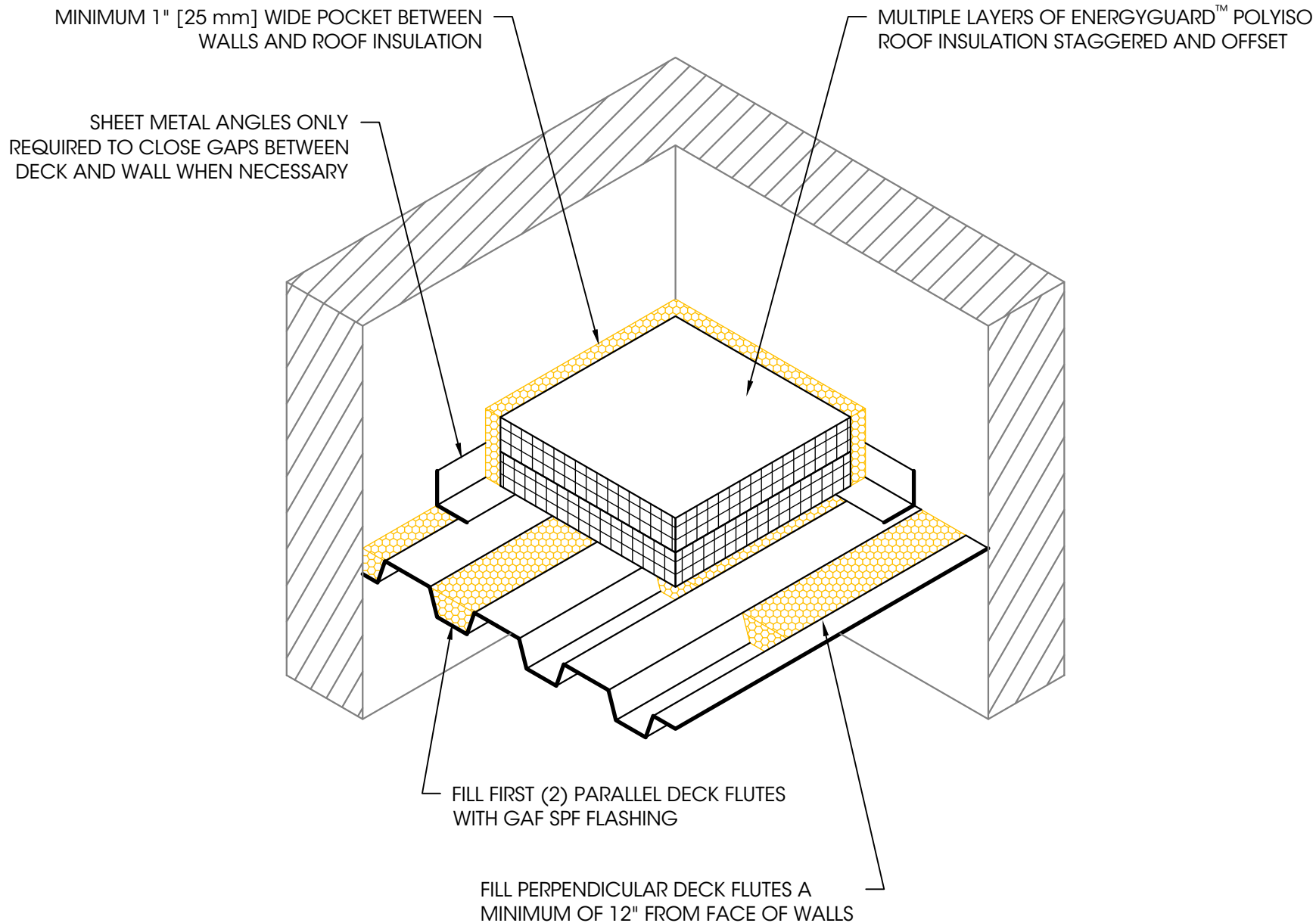
Not To Scale

Detail No.

075423

311A

Field Fabricated Coated Metal Scupper Flashing



**We
protect
what
matters
most™**

Legend:

Foam



Product:
EverGuard TPO

Installation:
Cold Storage
Systems

**Maximum
Warranty:**
—

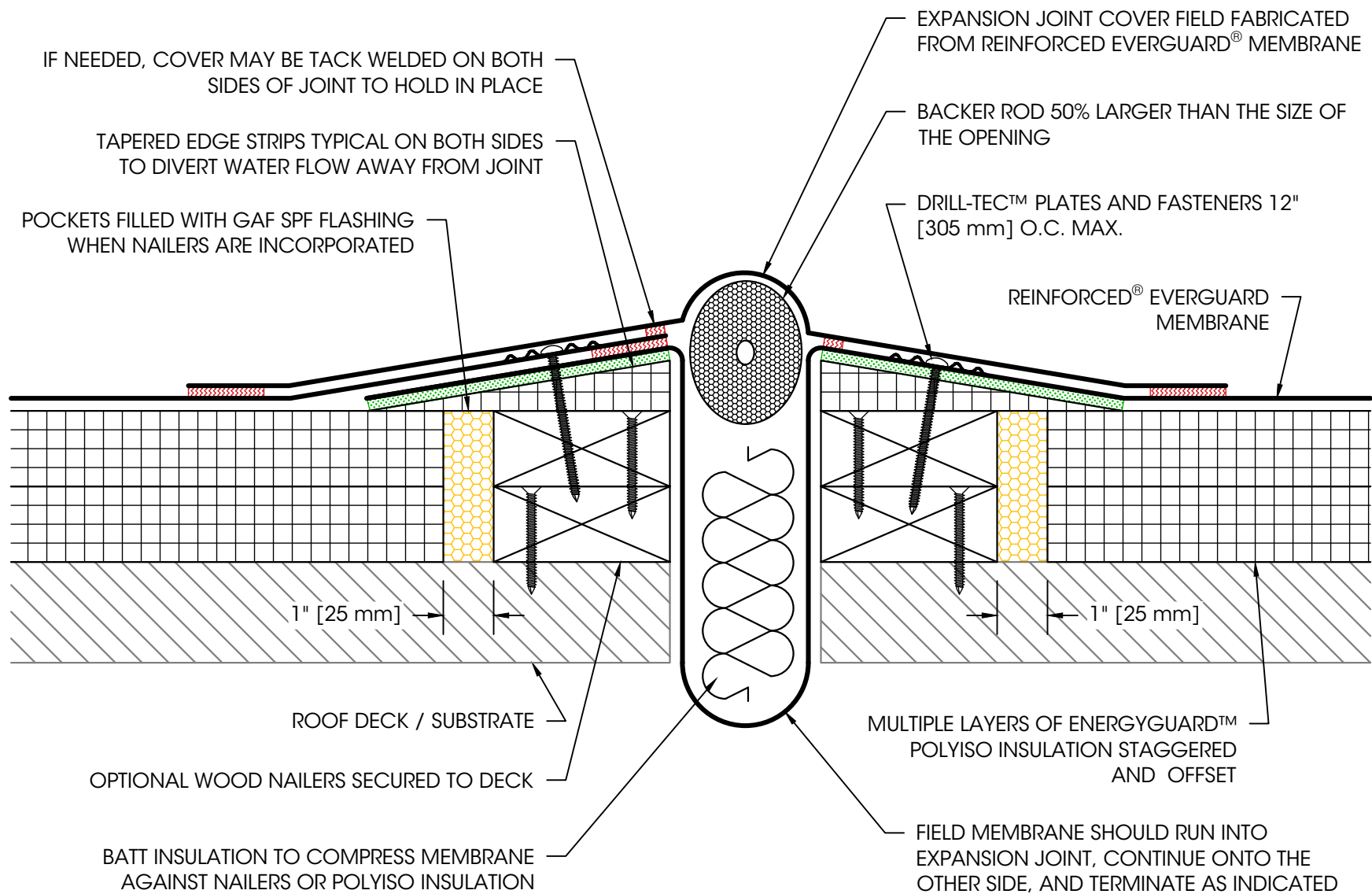
Date:
2/14/2025

Scale:
Not To Scale

Detail No.
075423

350

Air Seal at Interface of Steel Deck and Wall



NOTES:

1. FOR STEEL ROOF DECKS: FILL STEEL DECK FLUTES WITH CLOSED CELL SPRAY FOAM INSULATION PRIOR TO THE INSTALLATION OF ABOVE DECK INSULATION A MINIMUM OF 12" [305 mm] FROM FACE OF WALL ON EACH SIDE.

Field Fabricated Expansion Joint - Flat Type



**We
protect
what
matters
most™**

Legend:

Heat Weld



Adhesive



Foam



Product:

EverGuard TPO

Installation:

Cold Storage
Systems

Maximum

Warranty:

—

Date:

2/14/2025

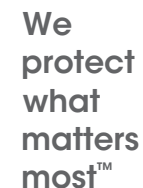
Scale:

Not To Scale

Detail No.

075423

401D



Heat Weld



Sealant



Adhesive



Foam



Product:

EverGuard TPO

Installation:

Cold Storage Systems

Maximum

Warranty:

10

Date:

2/14/2025

Scale:

Not To Scale

Detail No.

075423

403D

NOTES:

1. FOR STEEL ROOF DECKS: FILL TOPSIDE OF STEEL DECK FLUTES WITH CLOSED CELL SPRAY FOAM INSULATION PRIOR TO THE INSTALLATION OF ABOVE DECK INSULATION A MINIMUM OF 12" [305 mm] FROM EITHER EDGE OF EXPANSION JOINT
2. EXPANSION JOINTS SHOULD BE FABRICATED USING SMOOTH BACKED MEMBRANE ONLY.

1 Campus Drive, Parsippany NJ 07054 | Toll Free 877.423.7664 | gaf.com



We
protect
what
matters
most™

Legend:

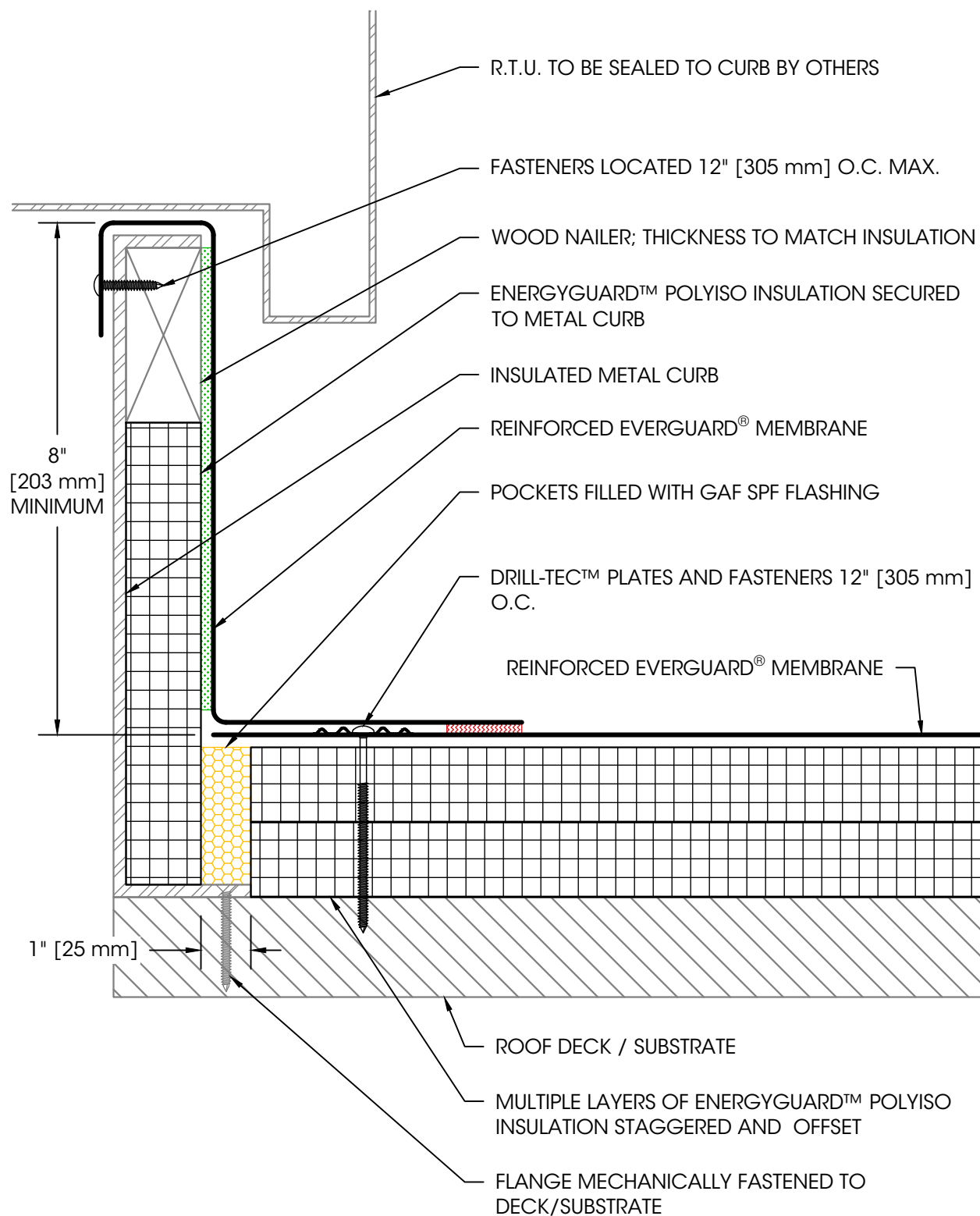
Heat Weld



Adhesive



Foam



NOTES:

1. FOR STEEL ROOF DECKS: FILL STEEL DECK FLUTES WITH CLOSED CELL SPRAY FOAM INSULATION PRIOR TO THE INSTALLATION OF ABOVE DECK INSULATION A MINIMUM OF 12" [305 mm] FROM OPENING ON EACH SIDE.

Product:

EverGuard TPO

Installation:

Cold Storage
Systems

**Maximum
Warranty:**

—

Date:

2/14/2025

Scale:

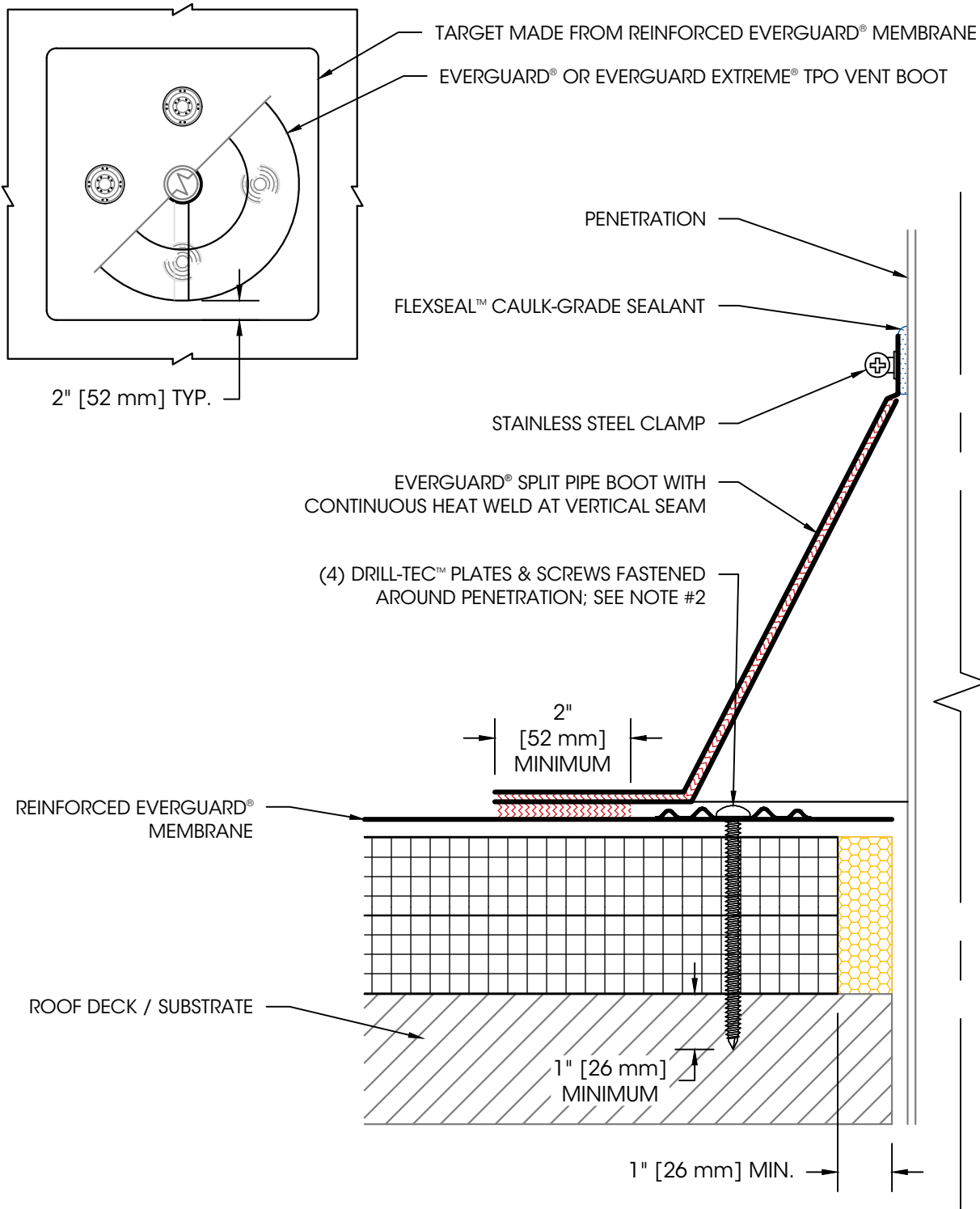
Not To Scale

Detail No.
075423

503C

RTU Curb Flashing

TARGET PATCH INSTALLATION (IF REQUIRED)



NOTES:

1. IF THE PLATES AND FASTENERS INTRUDE INTO THE BOOT FLANGE AREA, THEN A TARGET MUST BE FIRST INSTALLED OVER THE PLATES AND FASTENERS PRIOR TO BOOT INSTALLATION.
2. REFER TO THE COMPLETE INSTALLATION INSTRUCTIONS FOR PREPARATION AND TREATMENT OF MEMBRANE PRIOR TO INSTALLING THE CONICAL PIPE BOOT.
3. THIS DETAIL IS FOR USE AT LOCATIONS WITH AMBIENT INTERIOR TEMPERATURES ONLY.



We
protect
what
matters
most™

Legend:
Heat Weld



Sealant



Foam



Product:
EverGuard TPO

Installation:
Cold Storage
Systems

**Maximum
Warranty:**
—

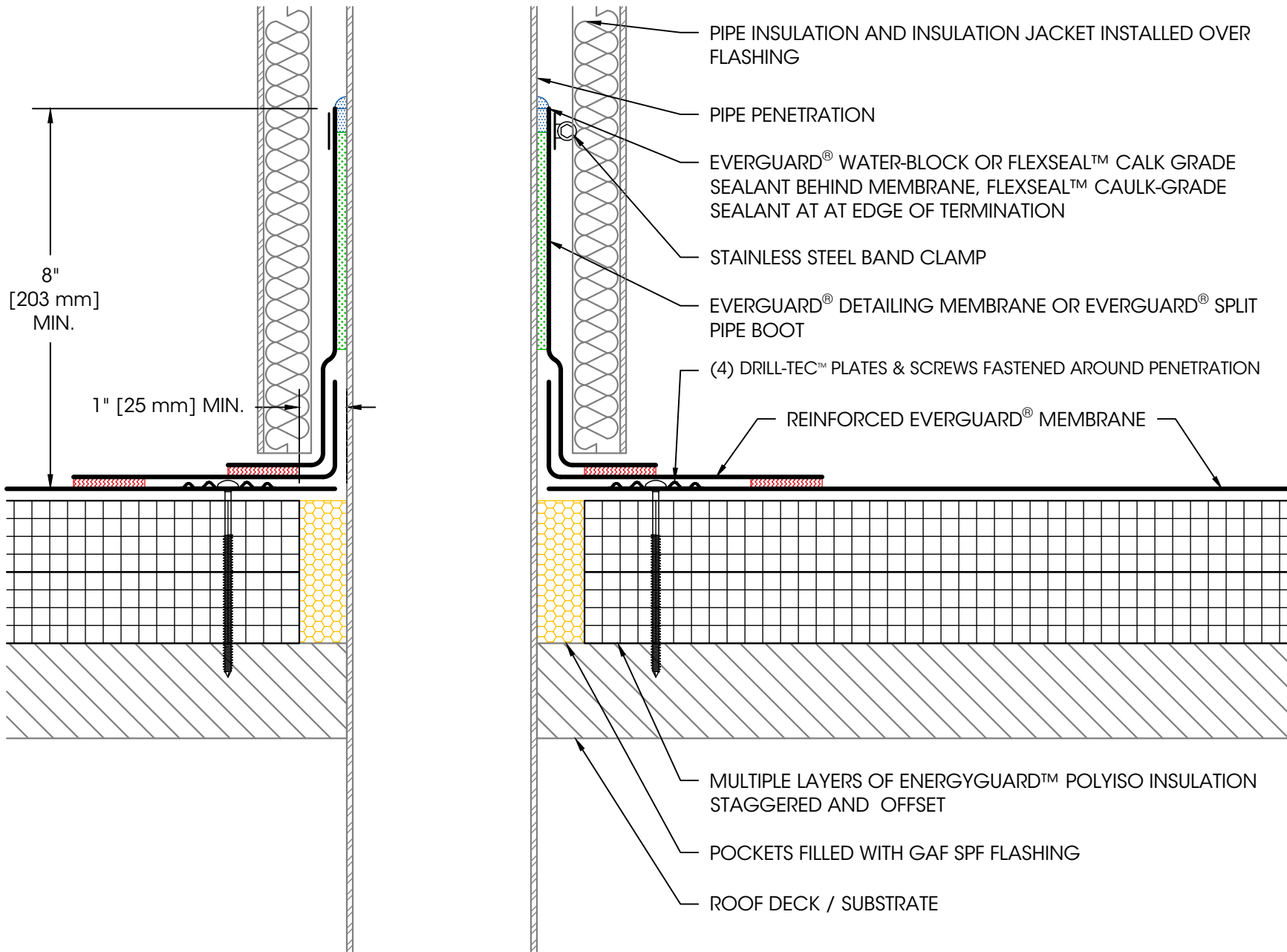
Date:
2/14/2025

Scale:
Not To Scale

Detail No.
075423

506B

Split Conical Pipe Boot Installation



**We
protect
what
matters
most™**

Legend:

Heat Weld



Sealant



Adhesive



Foam



Product:

EverGuard TPO

Installation:

Cold Storage
Systems

**Maximum
Warranty:**

—

Date:

2/14/2025

Scale:

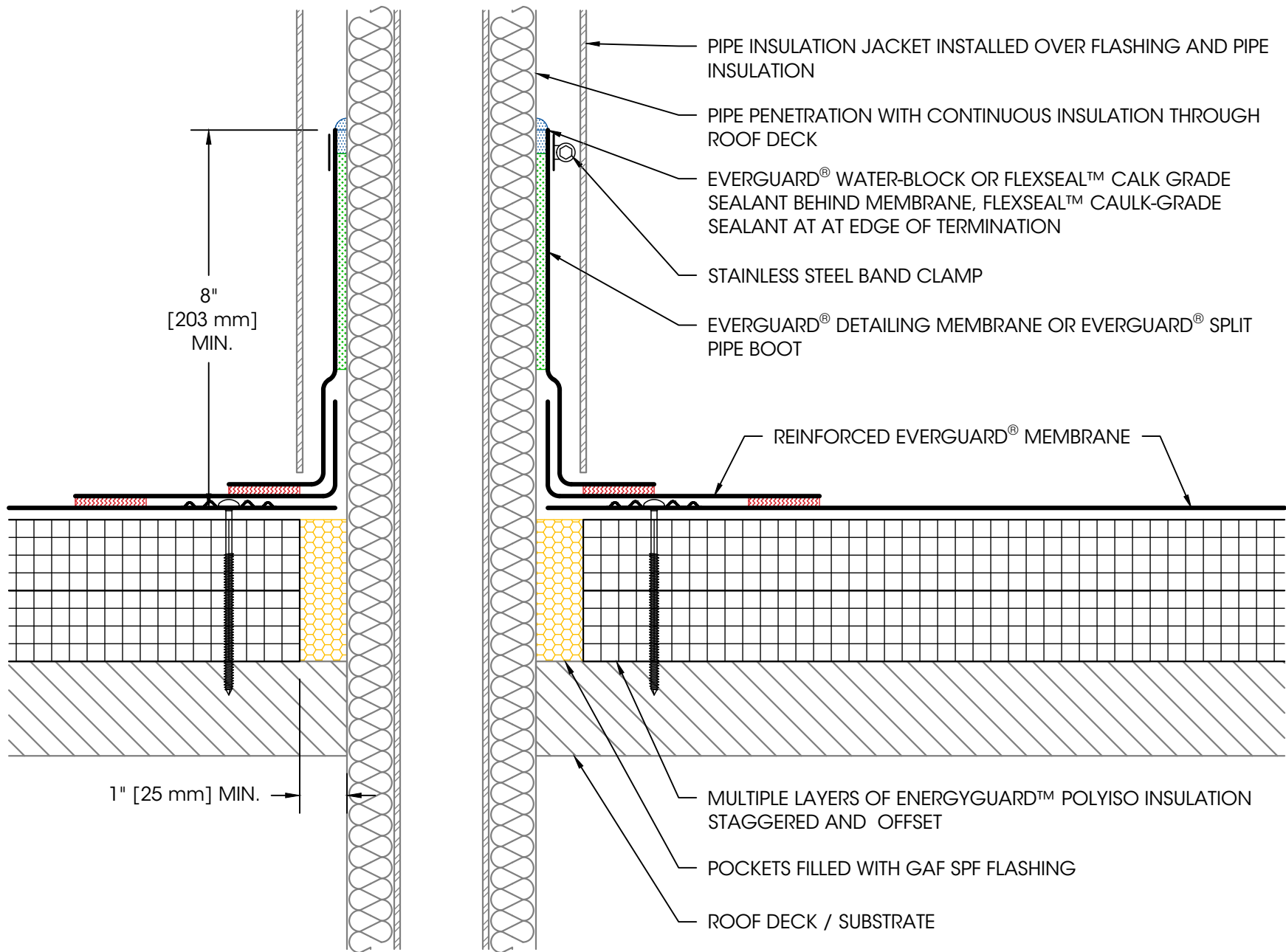
Not To Scale

Detail No.

075423

506C

Insulated Pipe Penetration with Insulation Over Flashing



**We
protect
what
matters
most™**

Legend:

Heat Weld



Sealant



Adhesive



Foam



Product:

EverGuard TPO

Installation:

Cold Storage
Systems

**Maximum
Warranty:**

—

Date:

2/14/2025

Scale:

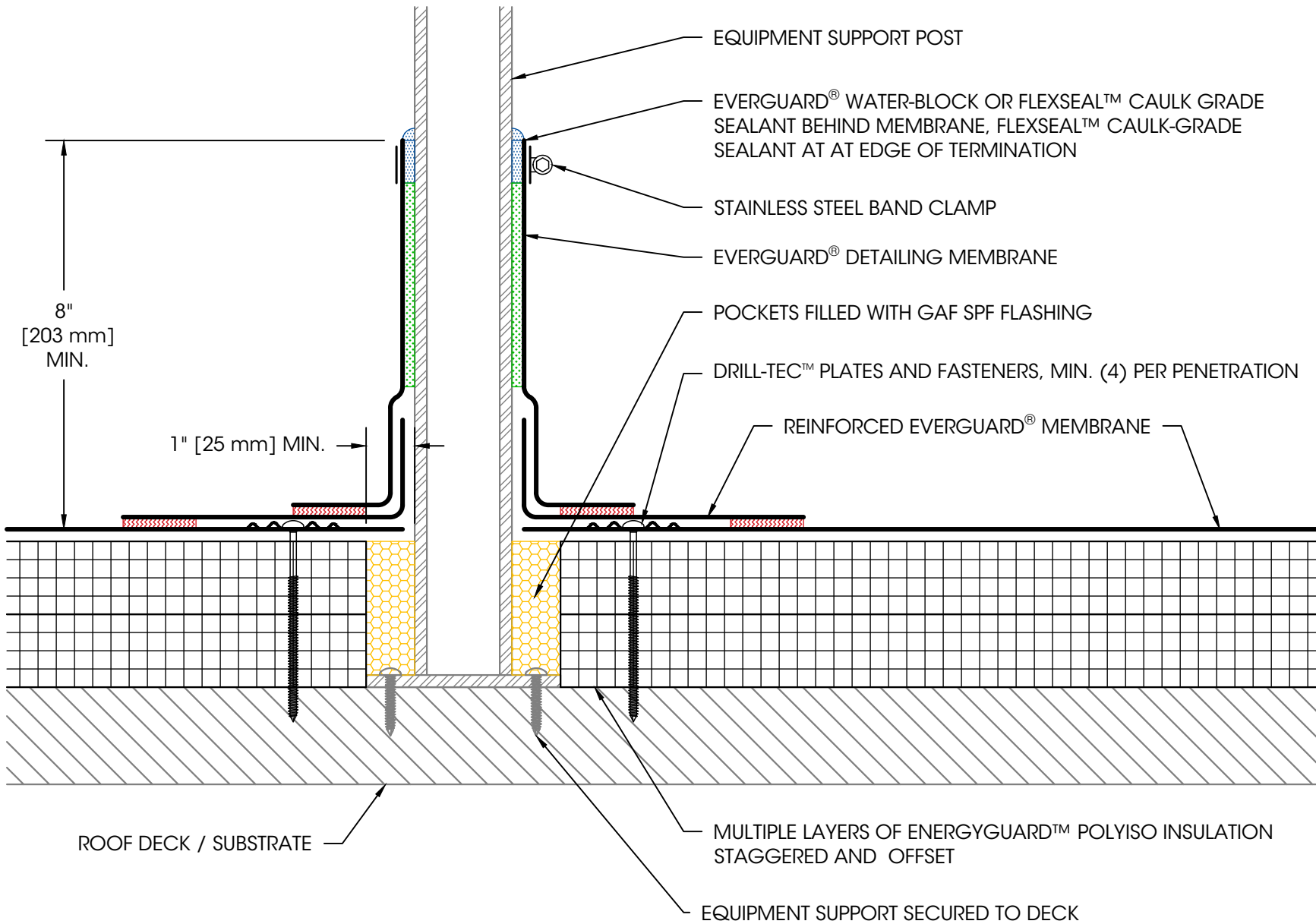
Not To Scale

Detail No.

075423

506D

Insulated Pipe Penetration with Flashing Over Insulation



**We
protect
what
matters
most™**

Legend:

Heat Weld



Sealant



Adhesive



Foam



Product:

EverGuard TPO

Installation:

Cold Storage
Systems

**Maximum
Warranty:**

—

Date:

2/14/2025

Scale:

Not To Scale

Detail No.

075423

511C

Deck Mounted Equipment Support Post Flashing