



## Cold Storage Systems

---

Not To Scale

# 130A

1. FOR STEEL ROOF DECKS: FILL STEEL DECK FLUTES WITH CLOSED CELL SPRAY FOAM INSULATION PRIOR TO THE INSTALLATION OF ABOVE DECK INSULATION A MINIMUM OF 12" [305 mm] FROM FACE OF WALL ON EACH SIDE.

1 Campus Drive, Parsippany NJ 07054 | Toll Free 877.423.7664 | [gaf.com](http://gaf.com)



We  
protect  
what  
matters  
most™

**Legend:**  
Heat Weld



Sealant



Adhesive



Foam



**Product:**  
EverGuard PVC

**Installation:**  
Cold Storage  
Systems

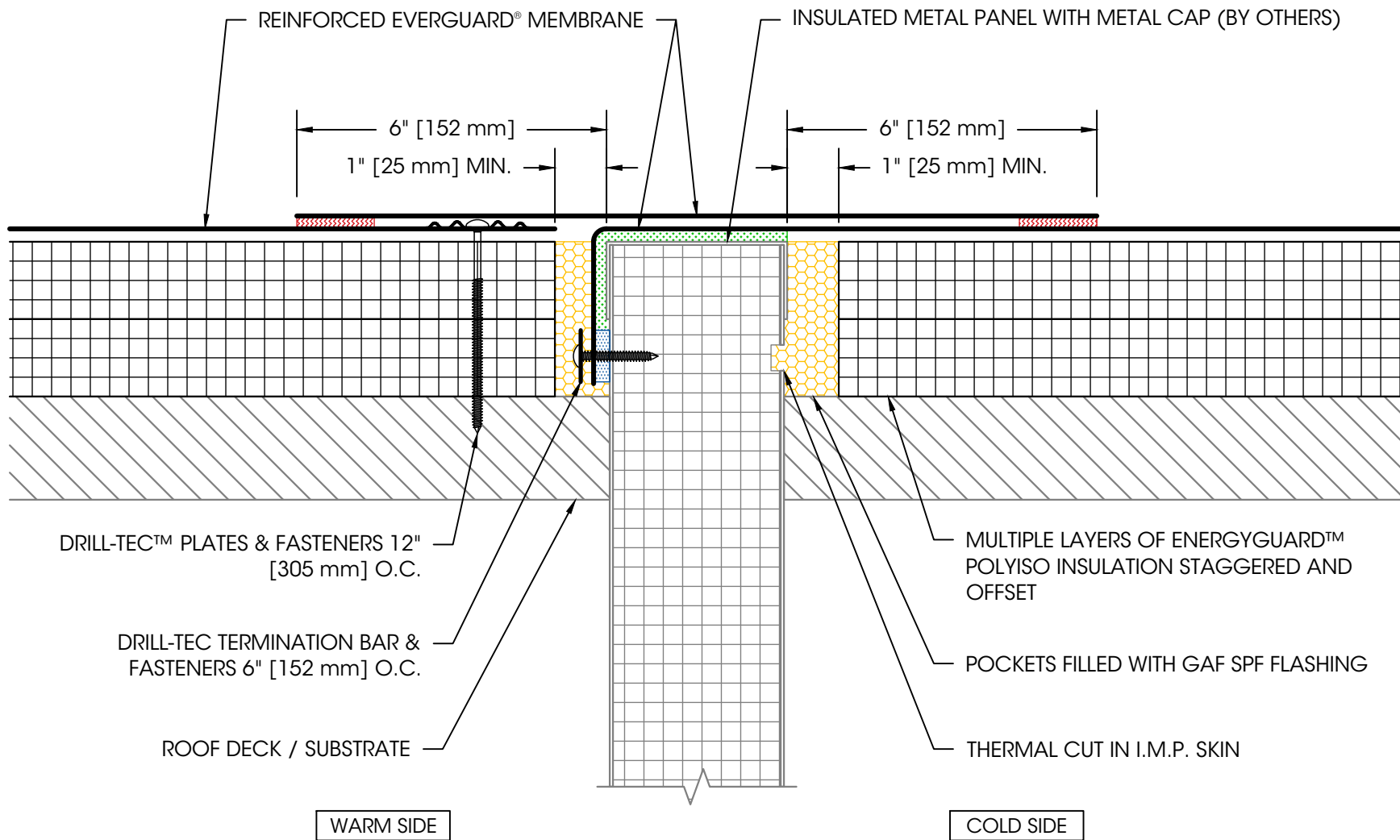
**Maximum  
Warranty:**  
—

**Date:**  
4/23/2025

**Scale:**  
Not To Scale

**Detail No.**  
075419

**130B**



**NOTES:**

1. FOR STEEL ROOF DECKS: FILL STEEL DECK FLUTES WITH CLOSED CELL SPRAY FOAM INSULATION PRIOR TO THE INSTALLATION OF ABOVE DECK INSULATION A MINIMUM OF 12" [305 mm] FROM FACE OF WALL ON EACH SIDE.

## Cold to Warm Transition - IMP Above Deck



We  
protect  
what  
matters  
most™

**Legend:**

Heat Weld



Adhesive



**Product:**  
EverGuard PVC

**Installation:**  
Cold Storage  
Systems

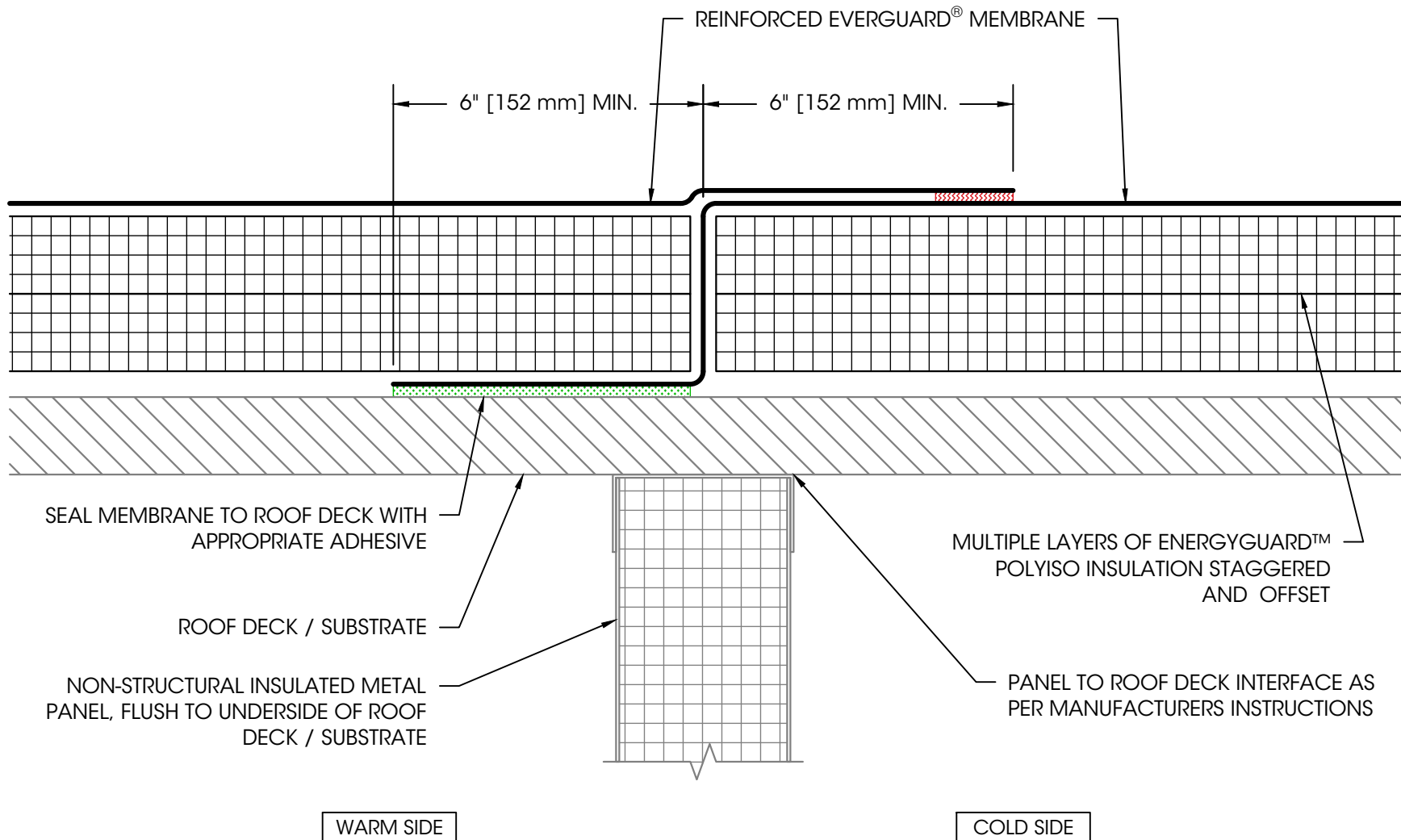
**Maximum  
Warranty:**  
—

**Date:**  
4/23/2025

**Scale:**  
Not To Scale

**Detail No.**  
075419

**130C**



**NOTES:**

1. FOR STEEL ROOF DECKS: FILL TOPSIDE OF STEEL DECK FLUTES WITH CLOSED CELL SPRAY FOAM INSULATION PRIOR TO THE INSTALLATION OF ABOVE DECK INSULATION A MINIMUM OF 12" [305 mm] FROM FACE OF WALL ON EACH SIDE, BOTH SIDES OF WALL.
2. AIR SEAL WALL-TO-UNDERSIDE OF ROOF DECK INTERFACE AS PER ARCHITECTURAL DRAWINGS.

## Cold to Warm Transition - IMP Below Deck



We  
protect  
what  
matters  
most™

**Legend:**

Heat Weld



Sealant



Adhesive



Foam



**Product:**

EverGuard PVC

**Installation:**

Cold Storage  
Systems

**Maximum**

**Warranty:**

—

**Date:**

4/23/2025

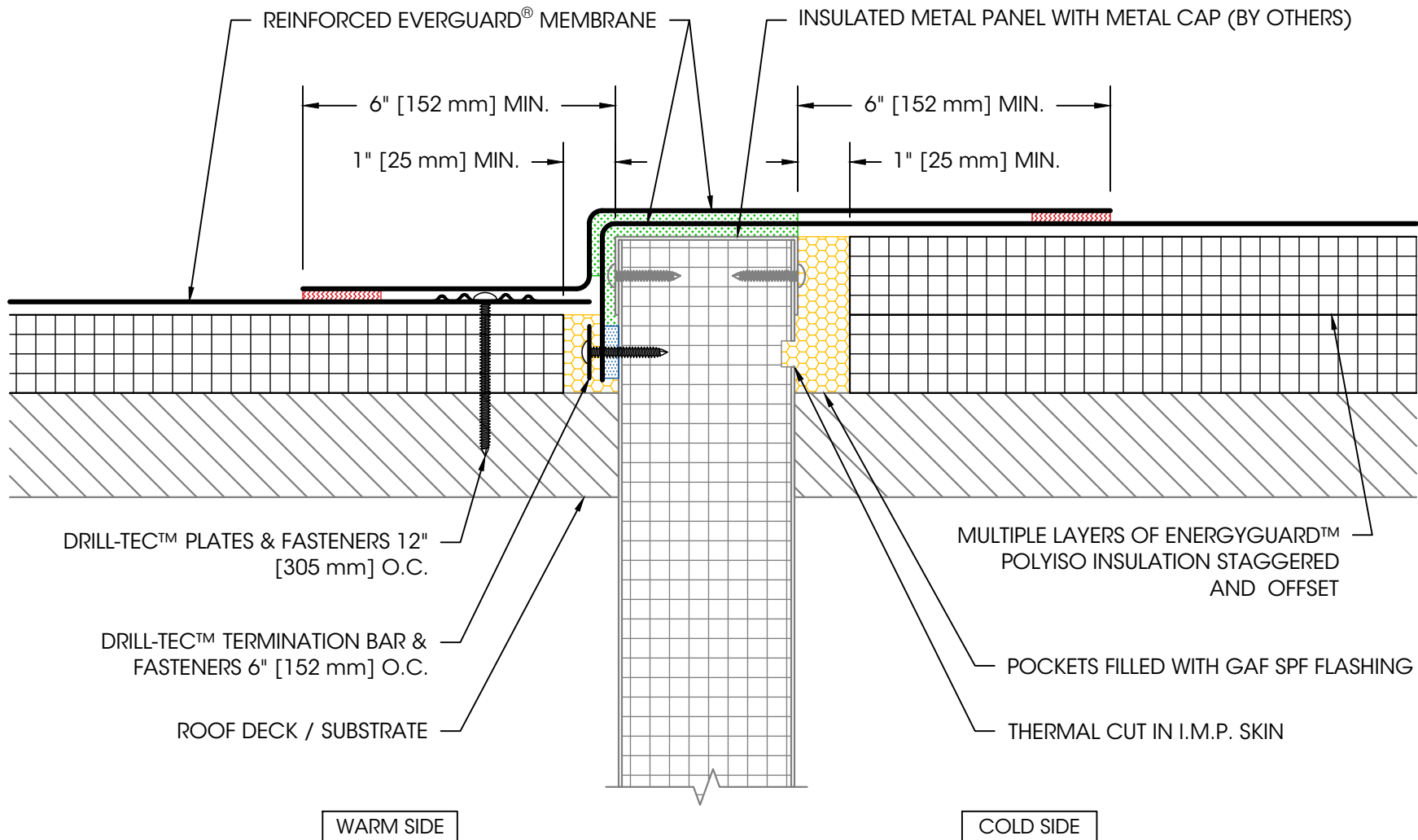
**Scale:**

Not To Scale

**Detail No.**

075419

**130D**



**NOTES:**

1. FOR STEEL ROOF DECKS: FILL STEEL DECK FLUTES WITH CLOSED CELL SPRAY FOAM INSULATION PRIOR TO THE INSTALLATION OF ABOVE DECK INSULATION A MINIMUM OF 12" [305 mm] FROM FACE OF WALL ON EACH SIDE.

## Offset Cold to Warm Transition - IMP Above Deck



We  
protect  
what  
matters  
most™

**Legend:**  
Heat Weld



Sealant



Adhesive



Foam



**Product:**  
EverGuard PVC

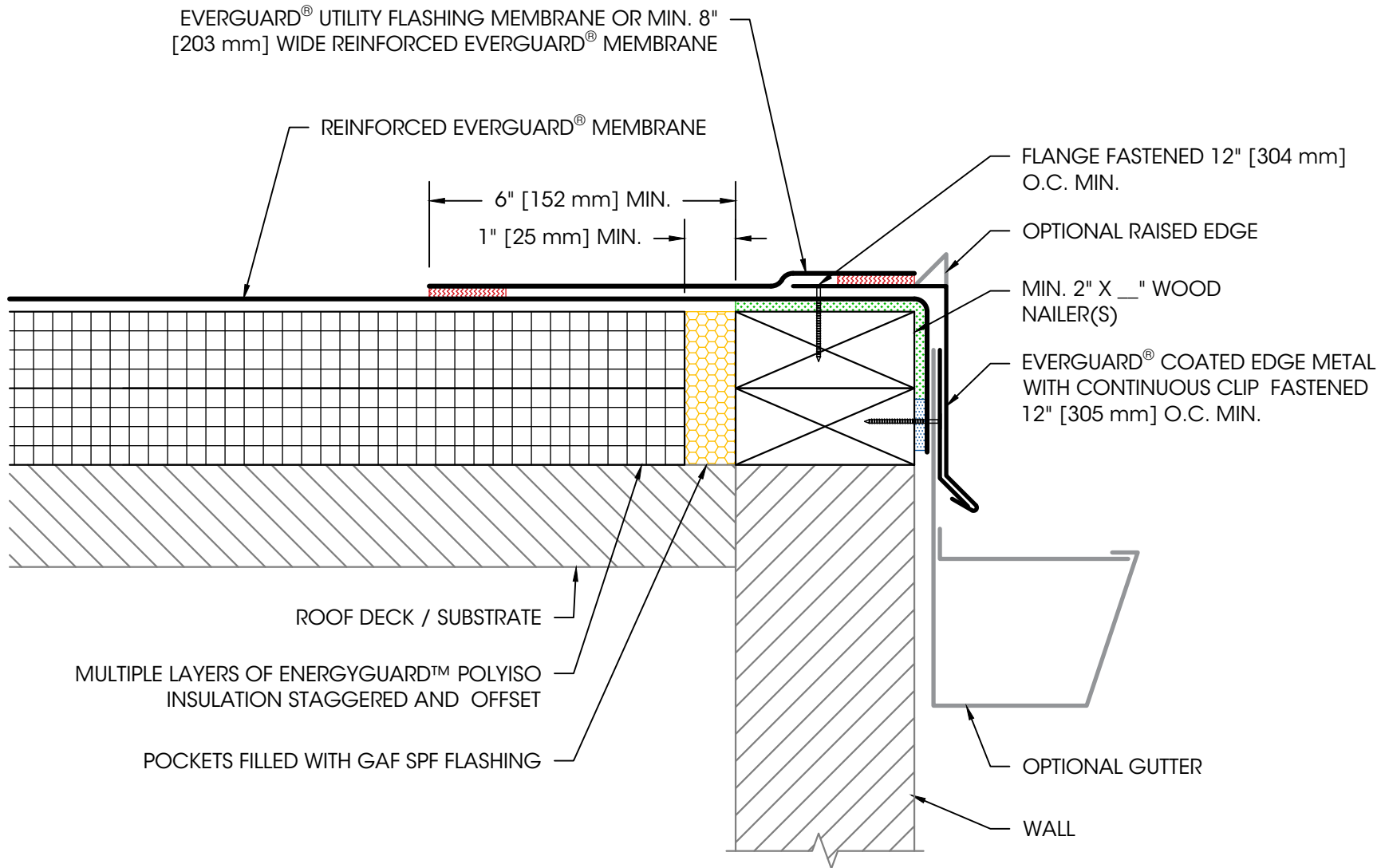
**Installation:**  
Cold Storage  
Systems

**Maximum  
Warranty:**  
—

**Date:**  
8/12/2025

**Scale:**  
Not To Scale

**Detail No.**  
075419  
**201A**



**NOTES:**

1. EDGE METAL SHOULD BE DESIGNED FOR WIND RESISTANCE IN ACCORDANCE WITH THE APPLICABLE EDITION OF ASCE 7 AND TESTED FOR CAPACITY IN ACCORDANCE WITH THE TEST METHODS IN THE APPLICABLE EDITION OF ANSI/SPRI ES-1.
2. FOR STEEL ROOF DECKS: FILL STEEL DECK FLUTES WITH CLOSED CELL SPRAY FOAM INSULATION PRIOR TO THE INSTALLATION OF ABOVE DECK INSULATION A MINIMUM OF 12" [305 mm] FROM FACE OF WALL ON EACH SIDE.

## Coated Drip Edge with Flashing Strip at Wall

EVERGUARD® UTILITY FLASHING MEMBRANE OR MIN. 8" WIDE REINFORCED  
EVERGUARD® TPO OR PVC MEMBRANE

REINFORCED EVERGUARD® MEMBRANE

6" MIN.

1" MIN.

FLANGE FASTENED 12" O.C. MIN.

CONTINUOUS BEAD OF SEALANT  
BELOW METAL PANEL CAP (BY  
OTHERS)

OPTIONAL RAISED EDGE

EVERGUARD® COATED EDGE  
METAL WITH CONTINUOUS CLIP  
FASTENED 12" O.C. MIN.

SEE ROOF ASSEMBLY DETAIL FOR SYSTEM INFORMATION

MULTIPLE LAYERS OF ENERGYGUARD™ POLYISO  
INSULATION STAGGERED AND OFFSET

POCKETS FILLED WITH GAF SPF FLASHING

THERMAL CUT IN I.M.P. SKIN

OPTIONAL GUTTER

INSULATED METAL PANEL WITH  
METAL CAP (BY OTHERS)

#### NOTES:

1. EDGE METAL SHOULD BE DESIGNED FOR WIND RESISTANCE IN ACCORDANCE WITH THE APPLICABLE EDITION OF ASCE 7. ADDITIONAL REQUIREMENTS APPLY FOR GUARANTEE COVERAGE OF ATTACHMENT TO INSULATED METAL WALL PANELS. CONTACT [coldstorage.assistance@gaf.com](mailto:coldstorage.assistance@gaf.com) FOR DETAILS.
2. FOR STEEL ROOF DECKS: FILL STEEL DECK FLUTES WITH CLOSED CELL SPRAY FOAM INSULATION PRIOR TO THE INSTALLATION OF ABOVE DECK INSULATION A MINIMUM OF 12" FROM FACE OF WALL ON EACH SIDE.



We  
protect  
what  
matters  
most™

#### Legend:

Heat Weld



Sealant



Adhesive



Foam



#### Product:

EverGuard PVC

#### Installation:

Cold Storage  
Systems

#### Maximum Warranty:

—

#### Date:

4/23/2025

#### Scale:

Not To Scale

#### Detail No.

075419

**201C**

## Coated Drip Edge with Flashing Strip at IMP



We  
protect  
what  
matters  
most™

**Legend:**

Sealant



Adhesive



Foam



**Product:**  
EverGuard PVC

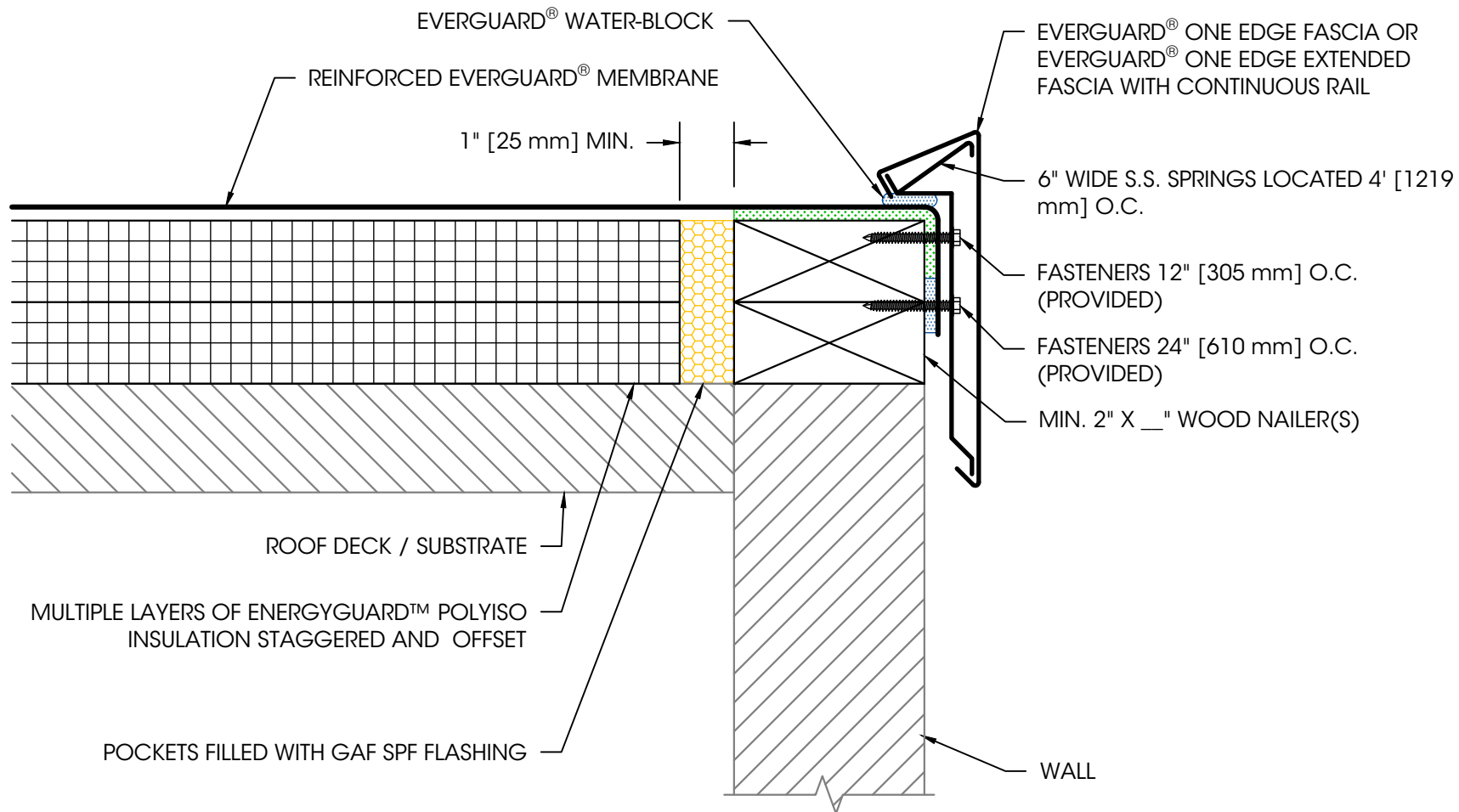
**Installation:**  
Cold Storage  
Systems

**Maximum  
Warranty:**  
—

**Date:**  
4/23/2025

**Scale:**  
Not To Scale

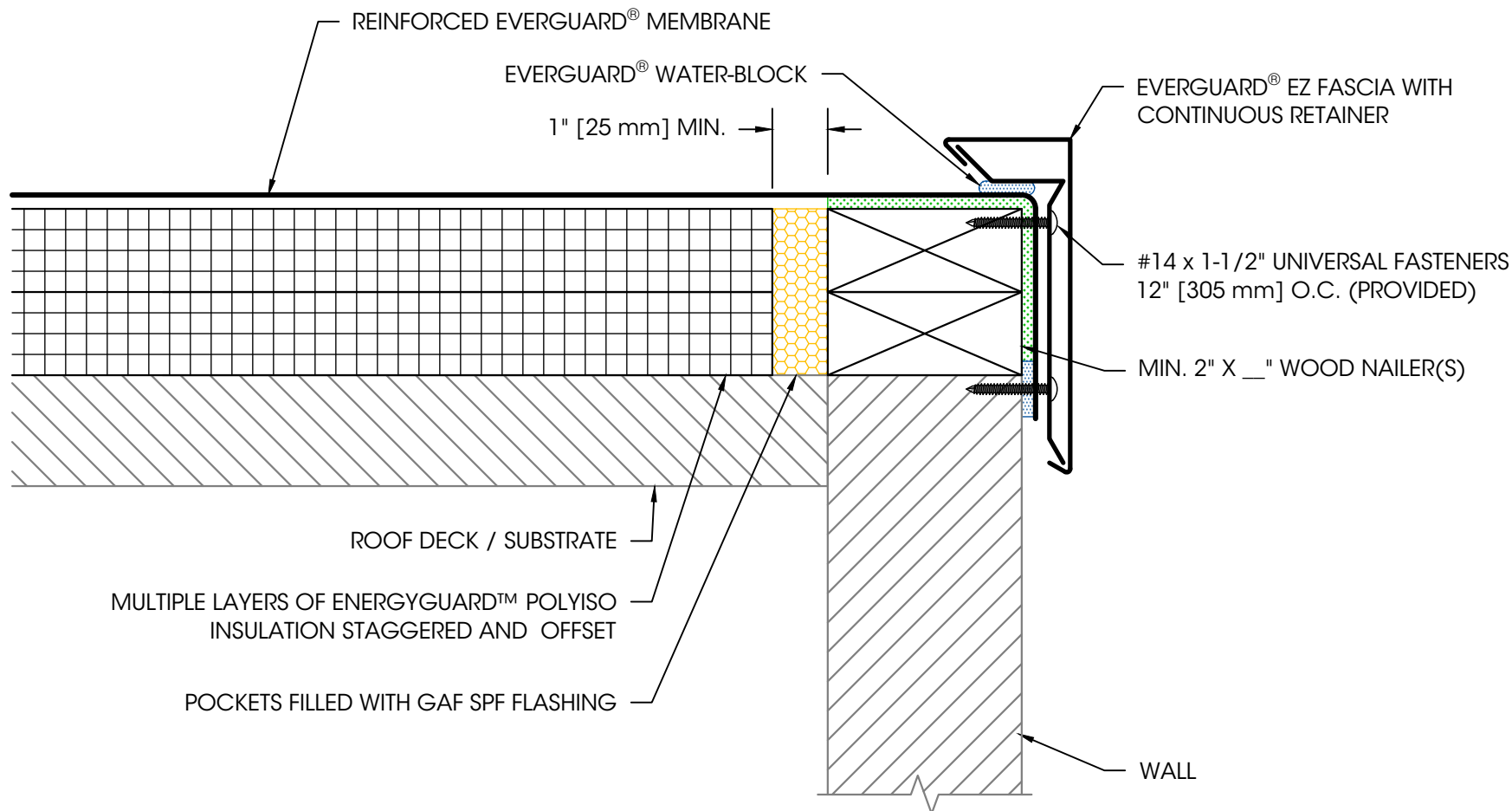
**Detail No.**  
075419  
**205**



**NOTES:**

1. EDGE METAL SHOULD BE DESIGNED FOR WIND RESISTANCE IN ACCORDANCE WITH THE APPLICABLE EDITION OF ASCE 7 AND TESTED FOR CAPACITY IN ACCORDANCE WITH THE TEST METHODS IN THE APPLICABLE EDITION OF ANSI/SPRI ES-1.
2. FOR STEEL ROOF DECKS: FILL STEEL DECK FLUTES WITH CLOSED CELL SPRAY FOAM INSULATION PRIOR TO THE INSTALLATION OF ABOVE DECK INSULATION A MINIMUM OF 12" [305 mm] FROM FACE OF WALL.

## EverGuard One Edge Fascia



#### NOTES:

1. EDGE METAL SHOULD BE DESIGNED FOR WIND RESISTANCE IN ACCORDANCE WITH THE APPLICABLE EDITION OF ASCE 7 AND TESTED FOR CAPACITY IN ACCORDANCE WITH THE TEST METHODS IN THE APPLICABLE EDITION OF ANSI/SPRI ES-1.
2. FOR STEEL ROOF DECKS: FILL STEEL DECK FLUTES WITH CLOSED CELL SPRAY FOAM INSULATION PRIOR TO THE INSTALLATION OF ABOVE DECK INSULATION A MINIMUM OF 12" [305 mm] FROM FACE OF WALL.

## EverGuard EZ Fascia



**We  
protect  
what  
matters  
most™**

#### Legend:

Sealant



Adhesive



Foam



#### Product:

EverGuard PVC

#### Installation:

Cold Storage  
Systems

#### Maximum

Warranty:

—

#### Date:

4/23/2025

#### Scale:

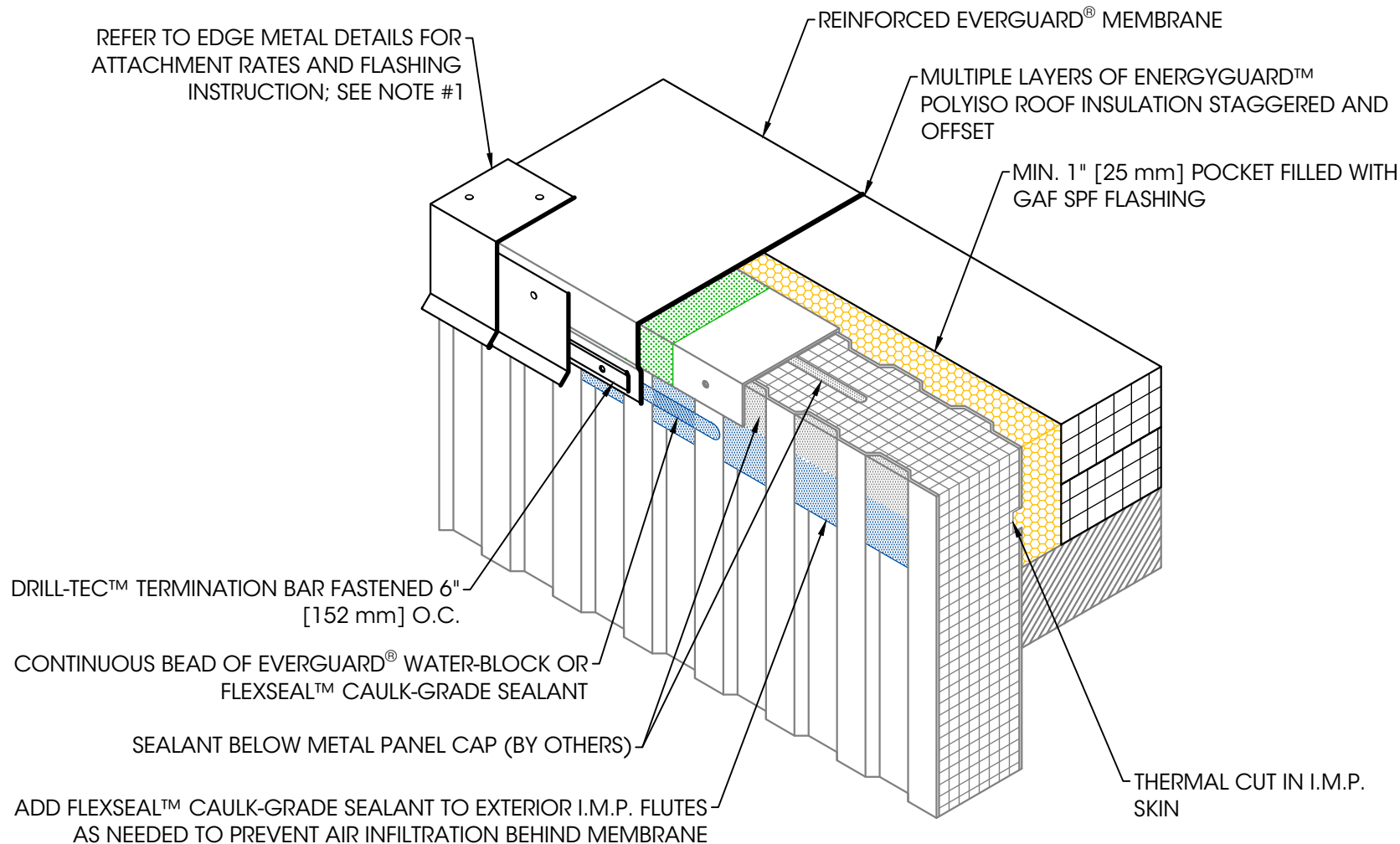
Not To Scale

#### Detail No.

075419

**232E**





#### NOTES:

1. EDGE METAL SHOULD BE DESIGNED FOR WIND RESISTANCE IN ACCORDANCE WITH THE APPLICABLE EDITION OF ASCE 7. ADDITIONAL REQUIREMENTS APPLY FOR GUARANTEE COVERAGE OF ATTACHMENT TO INSULATED METAL WALL PANELS. CONTACT [coldstorage.assistance@gaf.com](mailto:coldstorage.assistance@gaf.com) FOR DETAILS.
2. FOR STEEL ROOF DECKS: FILL STEEL DECK FLUTES WITH CLOSED CELL SPRAY FOAM INSULATION PRIOR TO THE INSTALLATION OF ABOVE DECK INSULATION A MINIMUM OF 12" [305 mm] FROM FACE OF WALL.

## Preparation of IMP Walls for Edge Termination



We  
protect  
what  
matters  
most™

#### Legend:

Sealant



Adhesive



Foam



**Product:**  
EverGuard PVC

**Installation:**  
Cold Storage  
Systems

**Maximum  
Warranty:**  
—

**Date:**  
9/12/2025

**Scale:**  
Not To Scale

**Detail No.**  
075419

**237**



We  
protect  
what  
matters  
most™

**Legend:**

Heat Weld



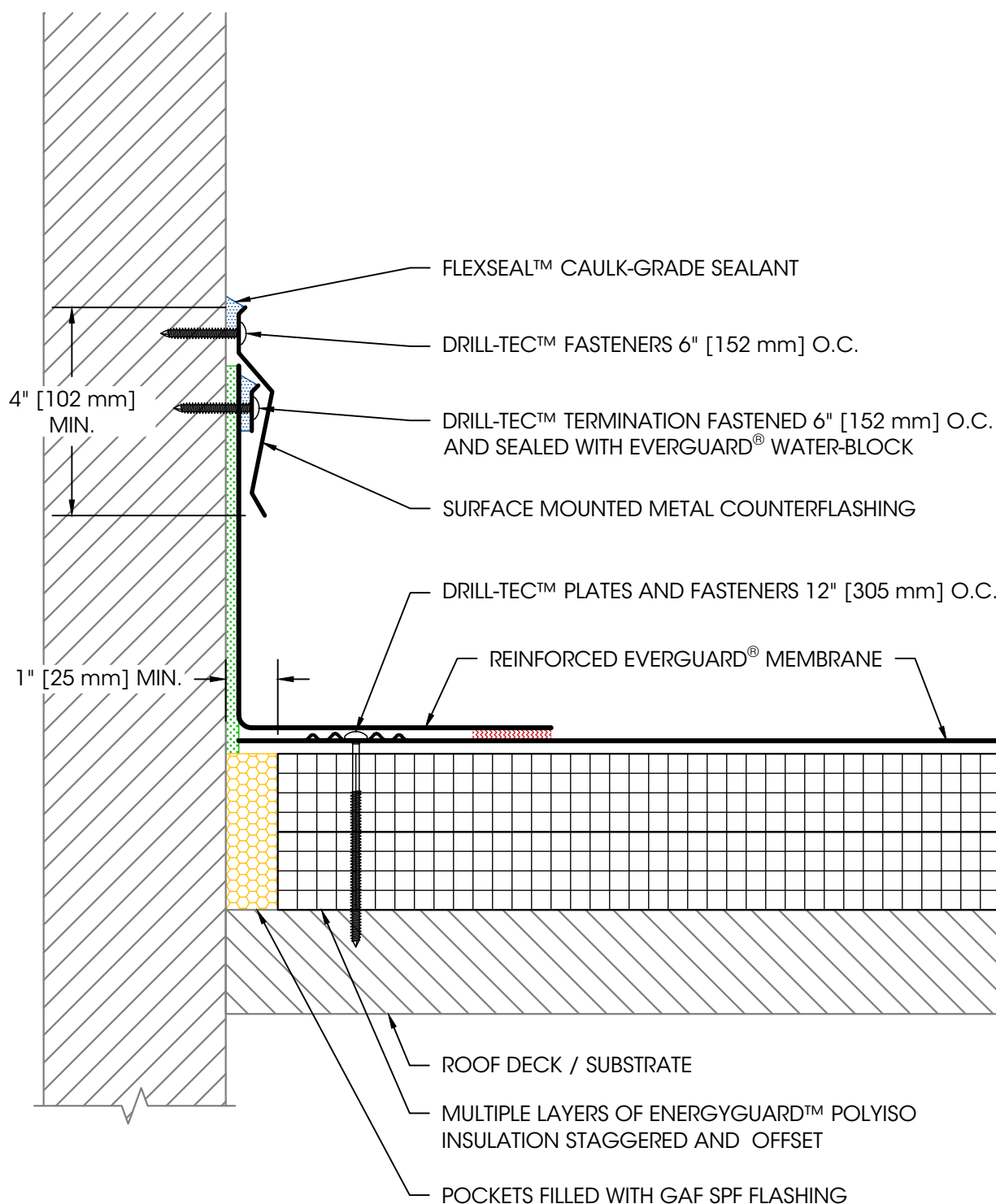
Sealant



Adhesive



Foam



**NOTES:**

1. EXPOSED WALLS AND CURBS MUST BE WATERPROOFED AND MAINTAINED ABOVE THE BASE FLASHING IN ORDER FOR ANY SURFACE MOUNTED TERMINATION TO BE EFFECTIVE.
2. FOR STEEL ROOF DECKS: FILL STEEL DECK FLUTES WITH CLOSED CELL SPRAY FOAM INSULATION PRIOR TO THE INSTALLATION OF ABOVE DECK INSULATION A MINIMUM OF 12" [305 mm] FROM FACE OF WALL ON EACH SIDE.

**Product:**  
EverGuard PVC

**Installation:**  
Cold Storage  
Systems

**Maximum  
Warranty:**  
—

**Date:**  
4/23/2025

**Scale:**  
Not To Scale

**Detail No.**  
075419

**301B**

## Wall Flashing with Surface Mounted Counterflashing



We  
protect  
what  
matters  
most™

**Legend:**

Heat Weld



Sealant



Adhesive



Foam



**Product:**

EverGuard PVC

**Installation:**

Cold Storage  
Systems

**Maximum  
Warranty:**

—

**Date:**

4/23/2025

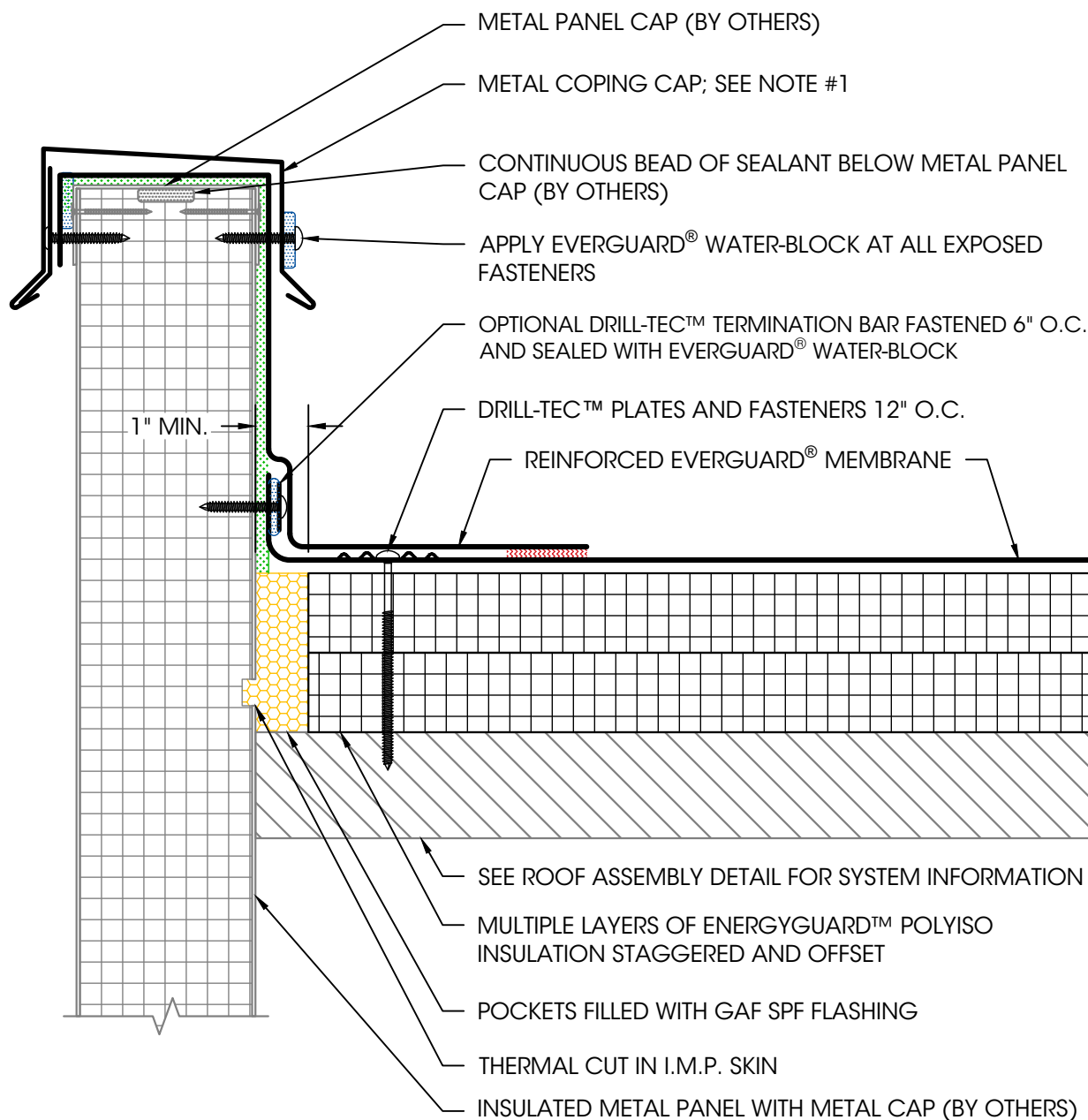
**Scale:**

Not To Scale

**Detail No.**

075419

**303B**



**NOTES:**

1. EDGE METAL SHOULD BE DESIGNED FOR WIND RESISTANCE IN ACCORDANCE WITH THE APPLICABLE EDITION OF ASCE 7. ADDITIONAL REQUIREMENTS APPLY FOR GUARANTEE COVERAGE OF ATTACHMENT TO INSULATED METAL WALL PANELS. CONTACT [coldstorage.assistance@gaf.com](mailto:coldstorage.assistance@gaf.com) FOR DETAILS.
2. FOR STEEL ROOF DECKS: FILL STEEL DECK FLUTES WITH CLOSED CELL SPRAY FOAM INSULATION PRIOR TO THE INSTALLATION OF ABOVE DECK INSULATION A MINIMUM OF 12" FROM FACE OF WALL ON EACH SIDE.

## IMP Wall Flashing with Coping Cap



We  
protect  
what  
matters  
most™

**Legend:**

Heat Weld



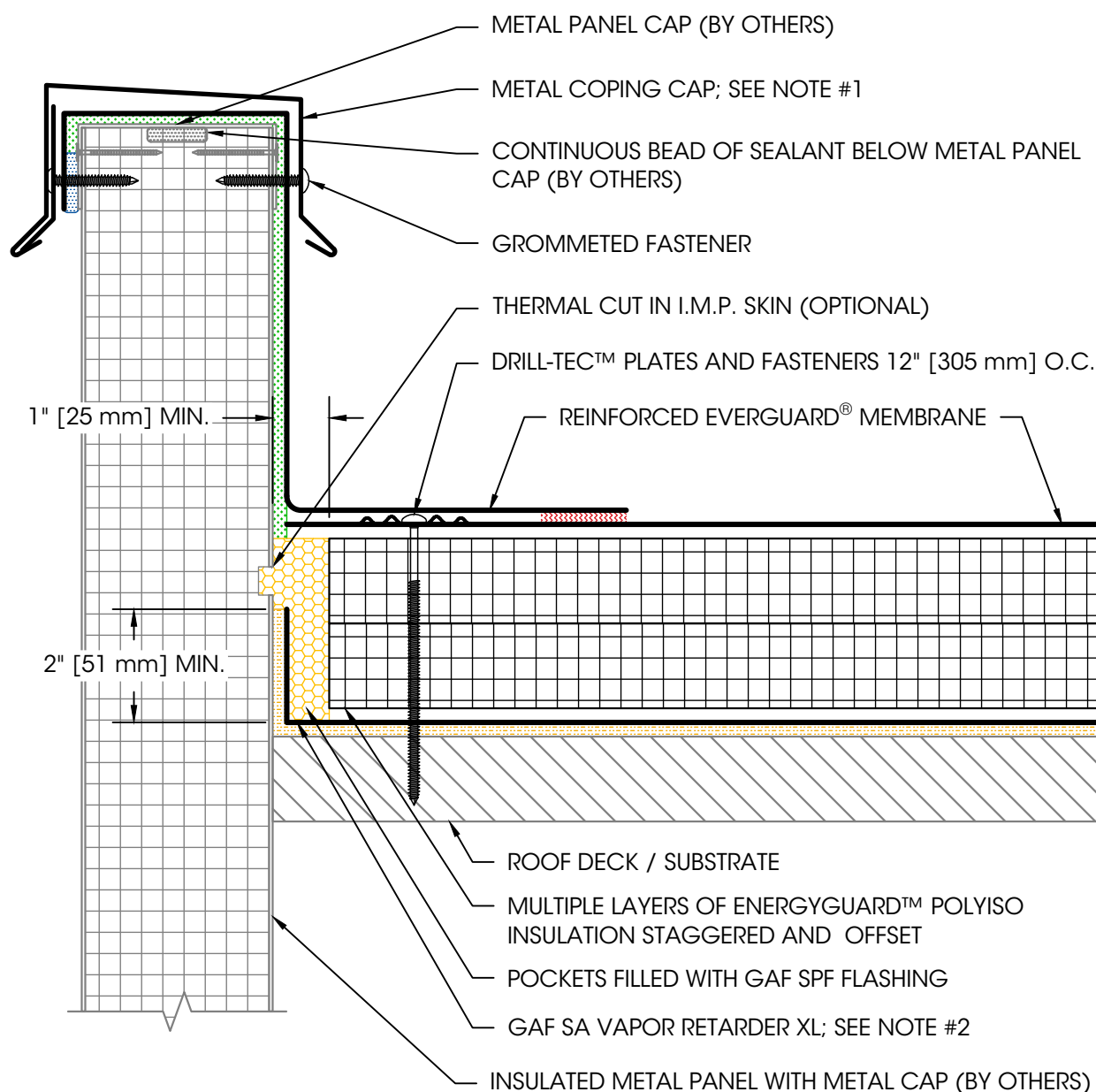
Sealant



Adhesive



Foam



**NOTES:**

1. EDGE METAL SHOULD BE DESIGNED FOR WIND RESISTANCE IN ACCORDANCE WITH THE APPLICABLE EDITION OF ASCE 7. ADDITIONAL REQUIREMENTS APPLY FOR GUARANTEE COVERAGE OF ATTACHMENT TO INSULATED METAL WALL PANELS. CONTACT [coldstorage.assistance@gaf.com](mailto:coldstorage.assistance@gaf.com) FOR DETAILS.
2. A VAPOR RETARDER MAY BE USED AT THE DECK LEVEL IF THERE ARE CONCERNS WITH POTENTIAL MOISTURE ISSUES DUE TO CERTAIN CONSTRUCTION PROCESSES OR OTHER SOURCES DURING BUILDING USE.
3. REFER TO GAF SA PRIMER INSTALLATION INSTRUCTIONS FOR GENERAL GUIDELINES.
4. MAINTAIN SEPARATION BETWEEN VAPOR RETARDER AND MEMBRANE / ADHESIVE TO AVOID POTENTIAL INCOMPATIBILITY ISSUES.
5. FOR STEEL ROOF DECKS: FILL STEEL DECK FLUTES WITH CLOSED CELL SPRAY FOAM INSULATION PRIOR TO THE INSTALLATION OF ABOVE DECK INSULATION A MINIMUM OF 12" [305 mm] FROM FACE OF WALL ON EACH SIDE.

**Product:**

EverGuard PVC

**Installation:**

Cold Storage  
Systems

**Maximum**

**Warranty:**

—

**Date:**

4/23/2025

**Scale:**

Not To Scale

**Detail No.**

075419

**303C**

## IMP Wall with Coping Cap and Vapor Retarder



We  
protect  
what  
matters  
most™

**Legend:**

Heat Weld



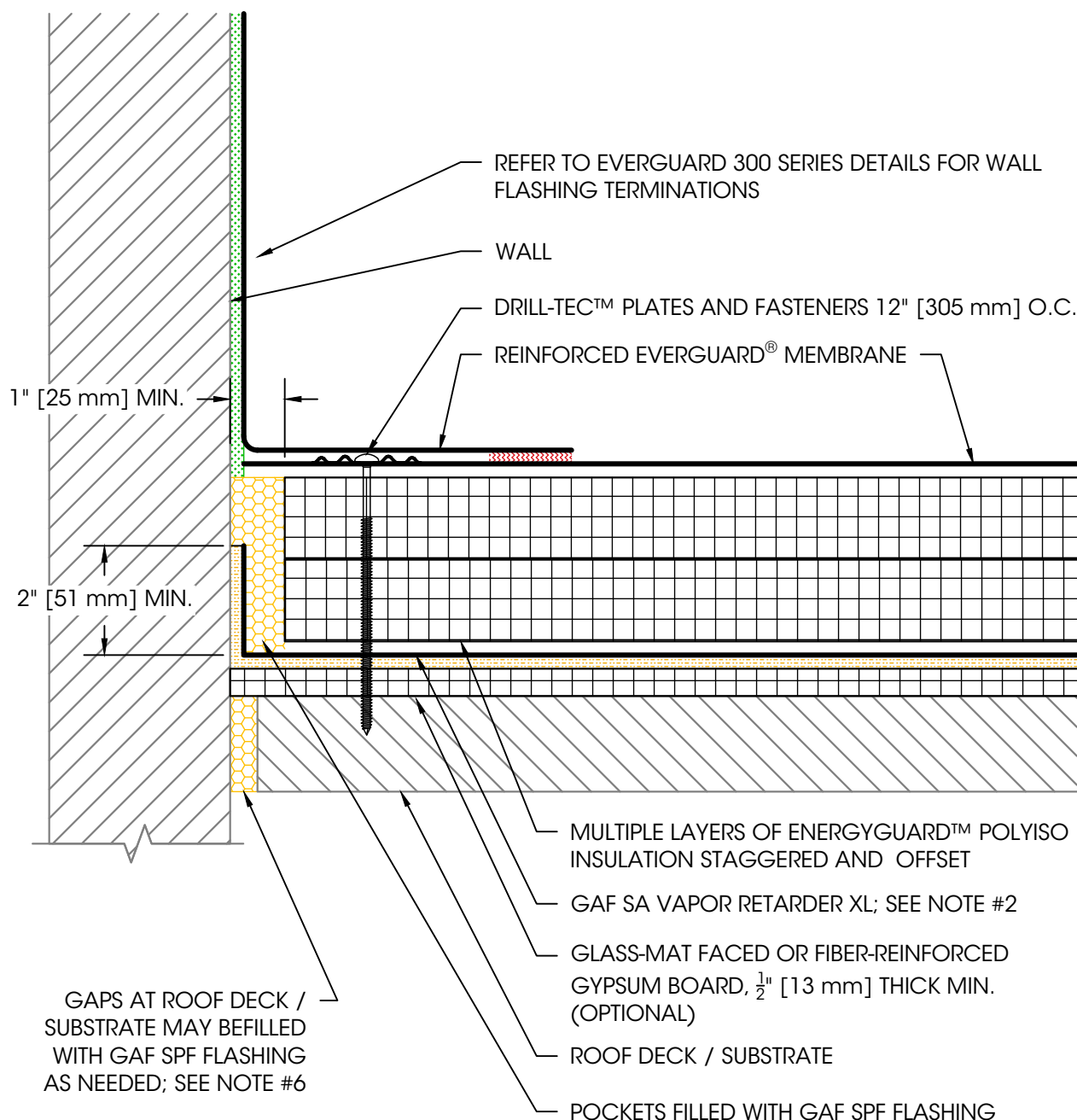
Sealant



Adhesive



Foam



**NOTES:**

1. USE DETAIL IN CONJUNCTION WITH THE STANDARD FLASHING AND TERMINATION DETAILS FOR THE APPROVED ROOF SYSTEM.
2. A VAPOR RETARDER MAY BE USED AT THE DECK LEVEL IF THERE ARE CONCERNS WITH POTENTIAL MOISTURE ISSUES DUE TO CERTAIN CONSTRUCTION PROCESSES OR OTHER SOURCES DURING BUILDING USE.
3. REFER TO GAF SA PRIMER INSTALLATION INSTRUCTIONS FOR GENERAL GUIDELINES.
4. MAINTAIN SEPARATION BETWEEN VAPOR RETARDER AND MEMBRANE / ADHESIVE TO AVOID POTENTIAL INCOMPATIBILITY ISSUES.
5. FOR STEEL ROOF DECKS: FILL STEEL DECK FLUTES WITH CLOSED CELL SPRAY FOAM INSULATION PRIOR TO THE INSTALLATION OF ABOVE DECK INSULATION A MINIMUM OF 12" [305 mm] FROM FACE OF WALL ON EACH SIDE.
6. WALL TO ROOF DECK INTERFACE MUST BE FULLY AIR SEALED.

**Product:**

EverGuard PVC

**Installation:**

Cold Storage  
Systems

**Maximum**

**Warranty:**

—

**Date:**

4/23/2025

**Scale:**

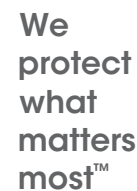
Not To Scale

**Detail No.**

075419

**309**

## Vapor Retarder Termination at Wall



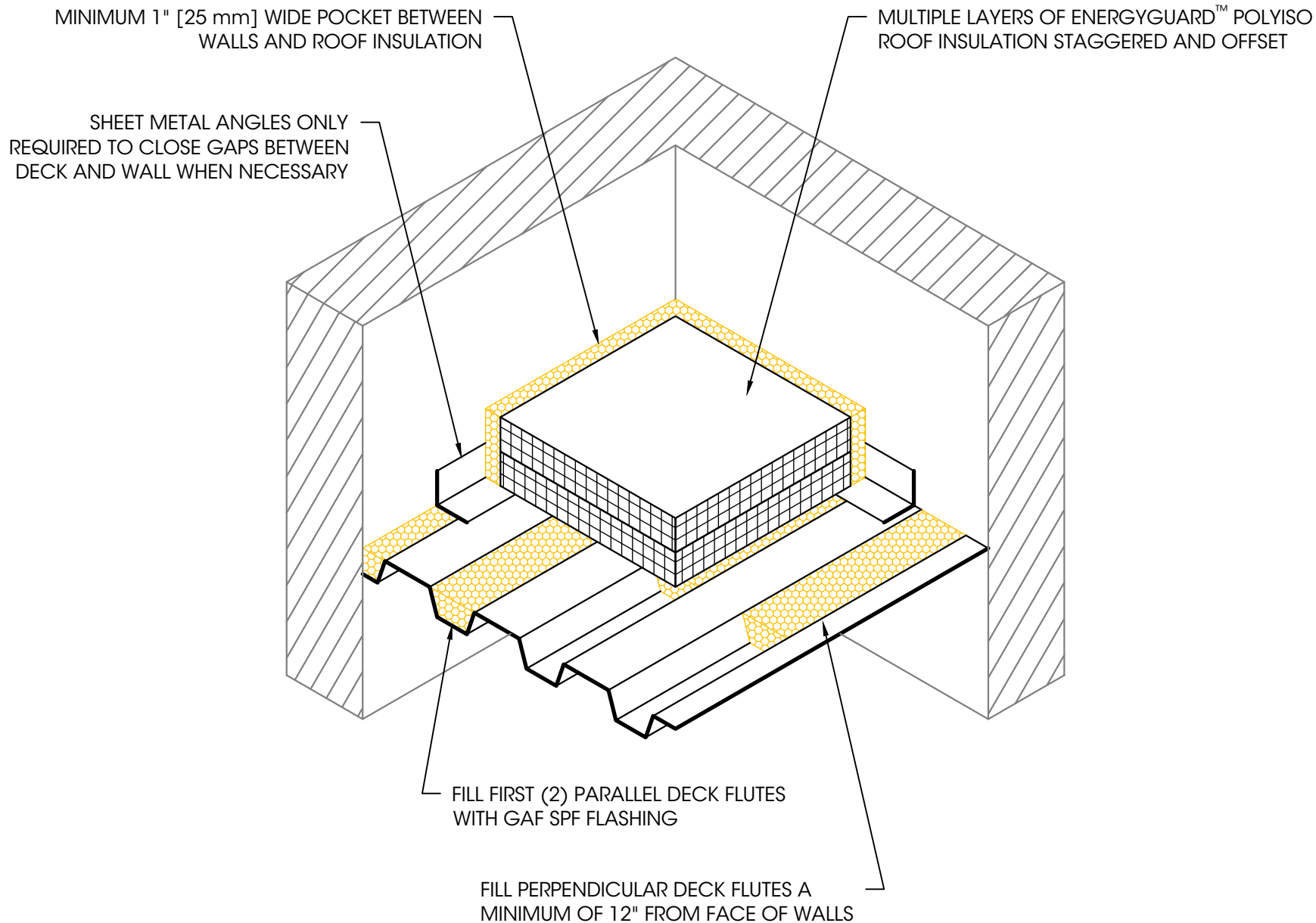
Foam

311A



1. FOR STEEL ROOF DECKS: FILL STEEL DECK FLUTES WITH CLOSED CELL SPRAY FOAM INSULATION PRIOR TO THE INSTALLATION OF ABOVE DECK INSULATION A MINIMUM OF 12" [305 mm] FROM FACE OF WALL ON EACH SIDE.
2. ALL (4) ROOF-SIDE CORNERS OF SCUPPER MUST BE COMPLETELY SEALED USING EVERGUARD® UNREINFORCED DETAILING MEMBRANE OR EVERGUARD® PREFORMED CORNER ACCESSORIES.
3. SCUPPER MUST BE SEALED OFF ON EXTERIOR FACE OF BUILDING.

1 Campus Drive, Parsippany NJ 07054 | Toll Free 877.423.7664 | [gaf.com](http://gaf.com)



**We  
protect  
what  
matters  
most™**

**Legend:**

Foam



**Product:**  
EverGuard PVC

**Installation:**  
Cold Storage  
Systems

**Maximum  
Warranty:**  
—

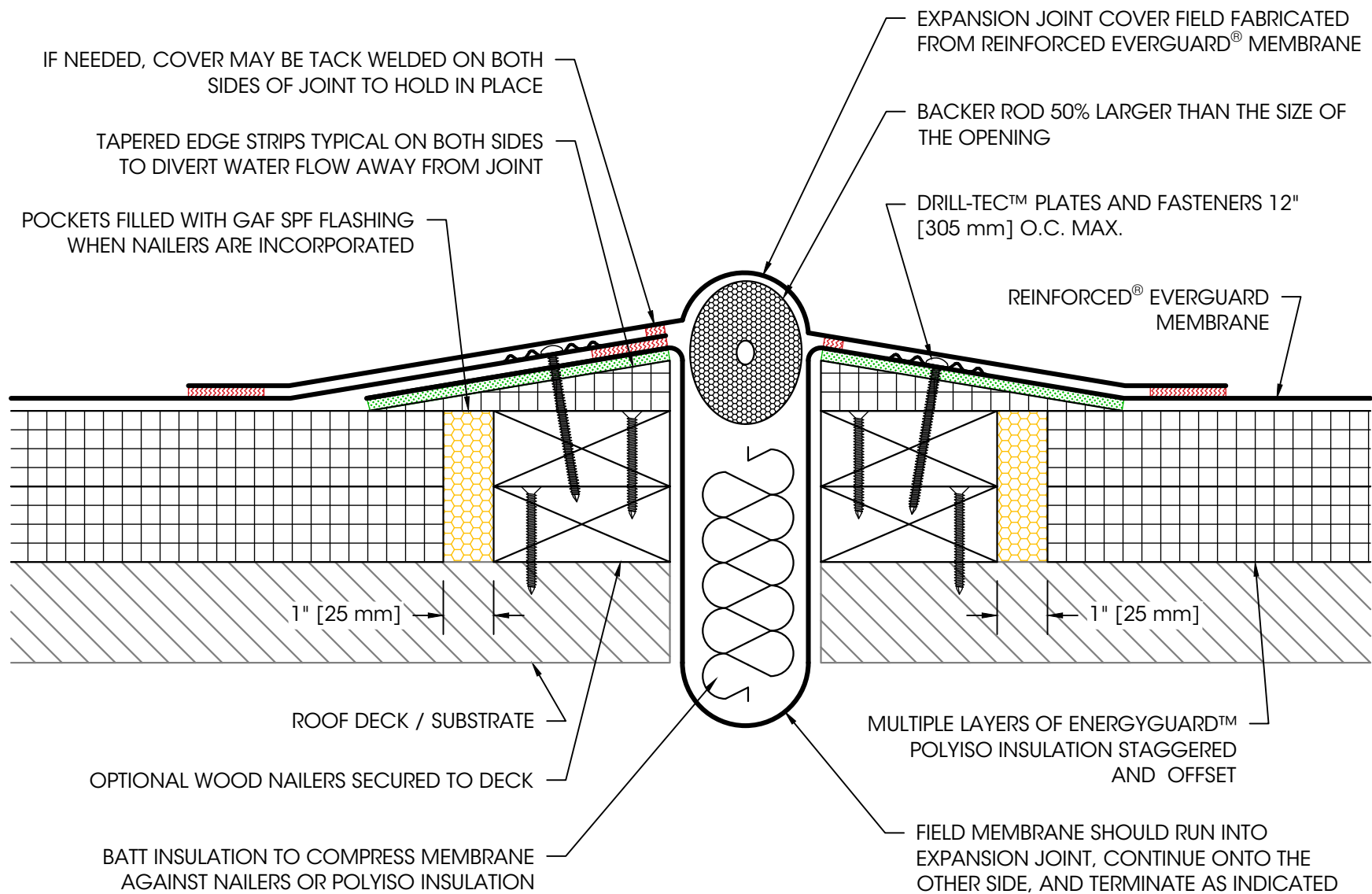
**Date:**  
4/23/2025

**Scale:**  
Not To Scale

**Detail No.**  
075419

**350**

## Air Seal at Interface of Steel Deck and Wall



**NOTES:**

1. FOR STEEL ROOF DECKS: FILL STEEL DECK FLUTES WITH CLOSED CELL SPRAY FOAM INSULATION PRIOR TO THE INSTALLATION OF ABOVE DECK INSULATION A MINIMUM OF 12" [305 mm] FROM FACE OF WALL ON EACH SIDE.

## Field Fabricated Expansion Joint - Flat Type



**We  
protect  
what  
matters  
most™**

**Legend:**

Heat Weld



Adhesive



Foam



**Product:**

EverGuard PVC

**Installation:**

Cold Storage  
Systems

**Maximum**

**Warranty:**

—

**Date:**

4/23/2025

**Scale:**

Not To Scale

**Detail No.**

075419

**401D**





We  
protect  
what  
matters  
most™

**Legend:**

Heat Weld



Sealant



Adhesive



Foam



**Product:**

EverGuard PVC

**Installation:**

Cold Storage  
Systems

**Maximum**

**Warranty:**

—

**Date:**

4/23/2025

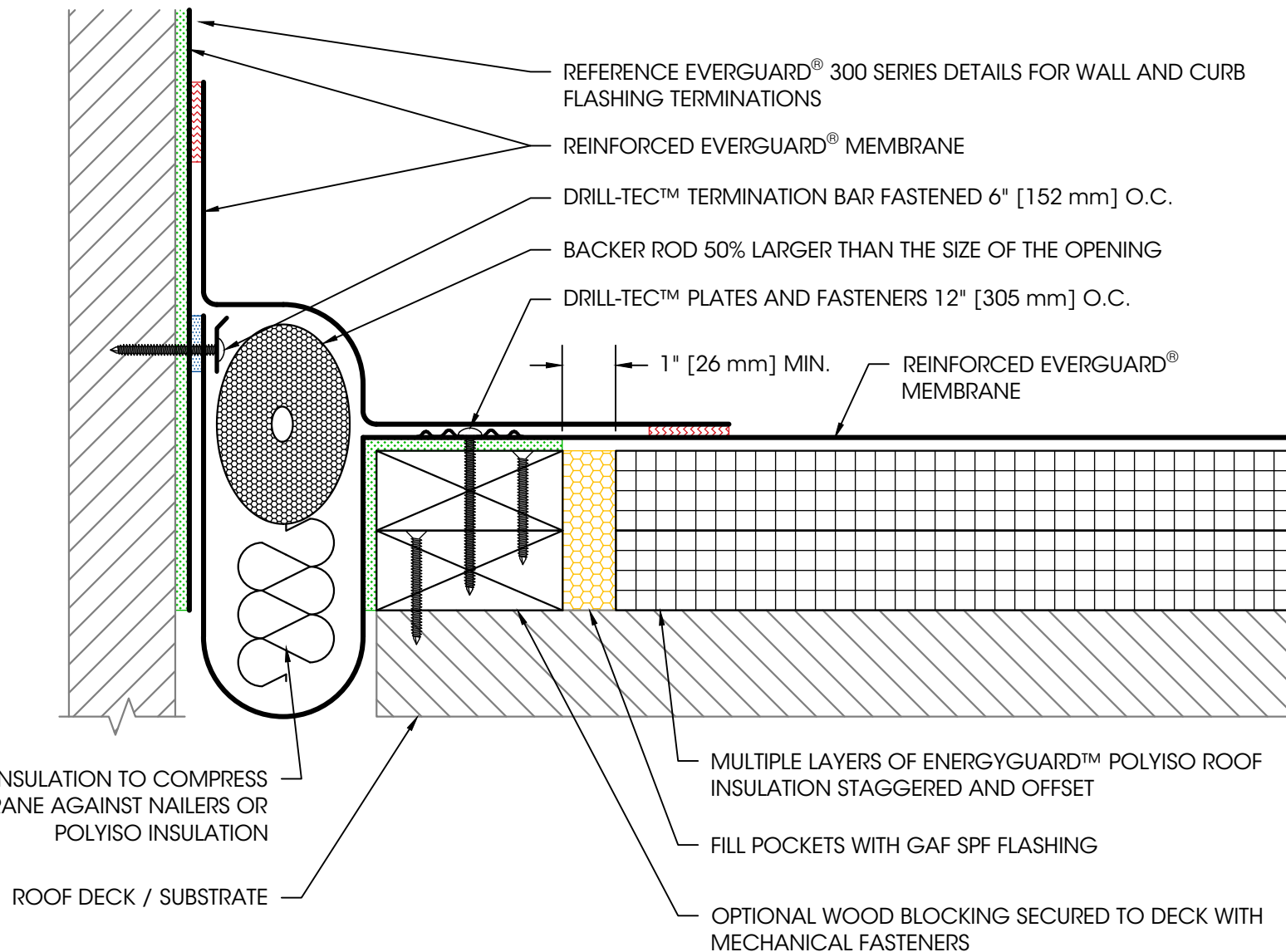
**Scale:**

Not To Scale

**Detail No.**

075419

**403D**



**NOTES:**

1. FOR STEEL ROOF DECKS: FILL TOPSIDE OF STEEL DECK FLUTES WITH CLOSED CELL SPRAY FOAM INSULATION PRIOR TO THE INSTALLATION OF ABOVE DECK INSULATION A MINIMUM OF 12" [305 mm] FROM EITHER EDGE OF EXPANSION JOINT
2. EXPANSION JOINTS SHOULD BE FABRICATED USING SMOOTH BACKED MEMBRANE ONLY.

## Field Fabricated Wall Expansion Joint - Flat Type



We  
protect  
what  
matters  
most™

**Legend:**

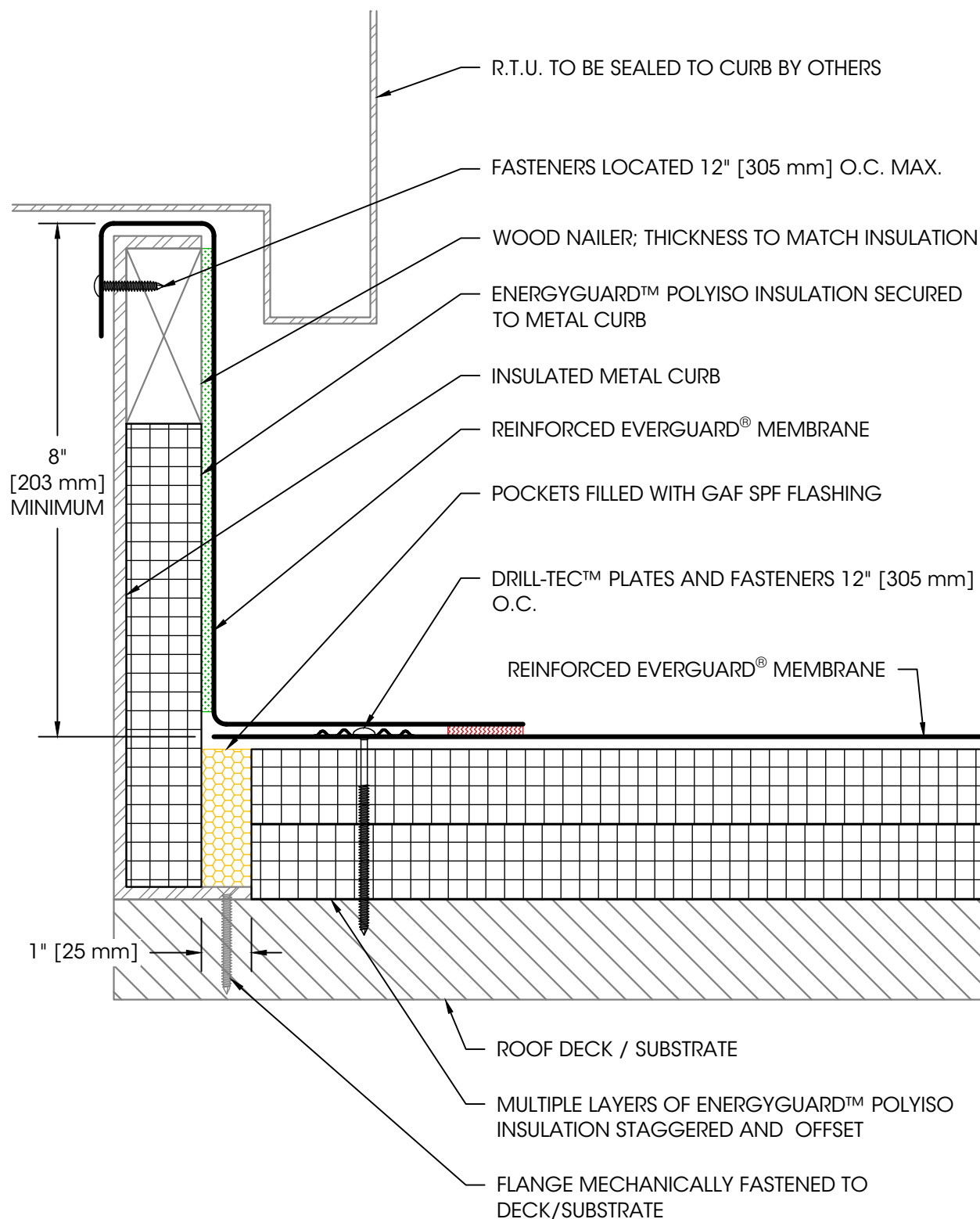
Heat Weld



Adhesive



Foam



**NOTES:**

1. FOR STEEL ROOF DECKS: FILL STEEL DECK FLUTES WITH CLOSED CELL SPRAY FOAM INSULATION PRIOR TO THE INSTALLATION OF ABOVE DECK INSULATION A MINIMUM OF 12" [305 mm] FROM OPENING ON EACH SIDE.

**Product:**

EverGuard PVC

**Installation:**

Cold Storage  
Systems

**Maximum  
Warranty:**

—

**Date:**

4/23/2025

**Scale:**

Not To Scale

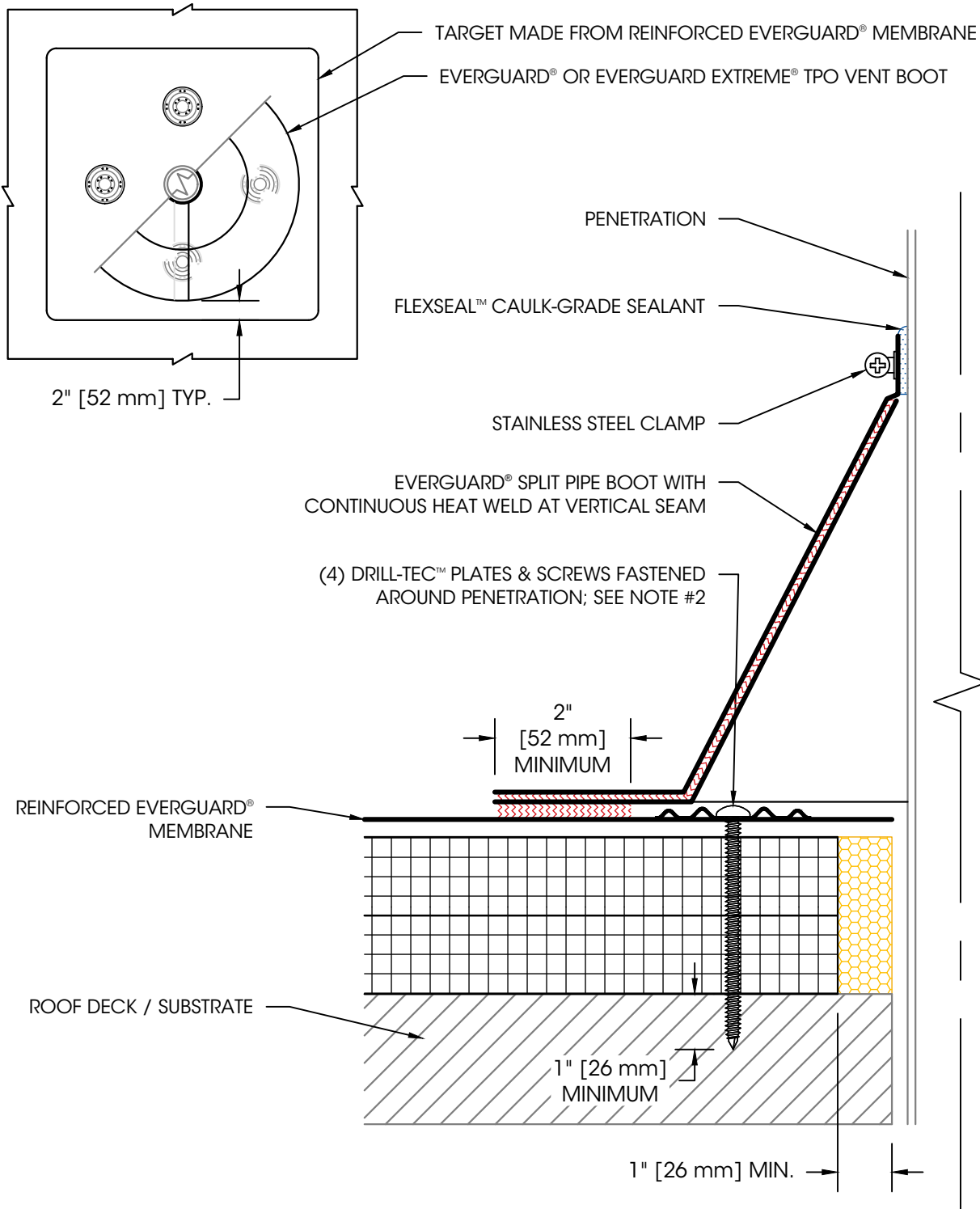
**Detail No.**

075419

**503C**

## RTU Curb Flashing

## TARGET PATCH INSTALLATION (IF REQUIRED)



### NOTES:

1. IF THE PLATES AND FASTENERS INTRUDE INTO THE BOOT FLANGE AREA, THEN A TARGET MUST BE FIRST INSTALLED OVER THE PLATES AND FASTENERS PRIOR TO BOOT INSTALLATION.
2. REFER TO THE COMPLETE INSTALLATION INSTRUCTIONS FOR PREPARATION AND TREATMENT OF MEMBRANE PRIOR TO INSTALLING THE CONICAL PIPE BOOT.
3. THIS DETAIL IS FOR USE AT LOCATIONS WITH AMBIENT INTERIOR TEMPERATURES ONLY.

**GAF**

We  
protect  
what  
matters  
most™

**Legend:**  
Heat Weld



Sealant



Foam



**Product:**  
EverGuard PVC

**Installation:**  
Cold Storage  
Systems

**Maximum  
Warranty:**  
—

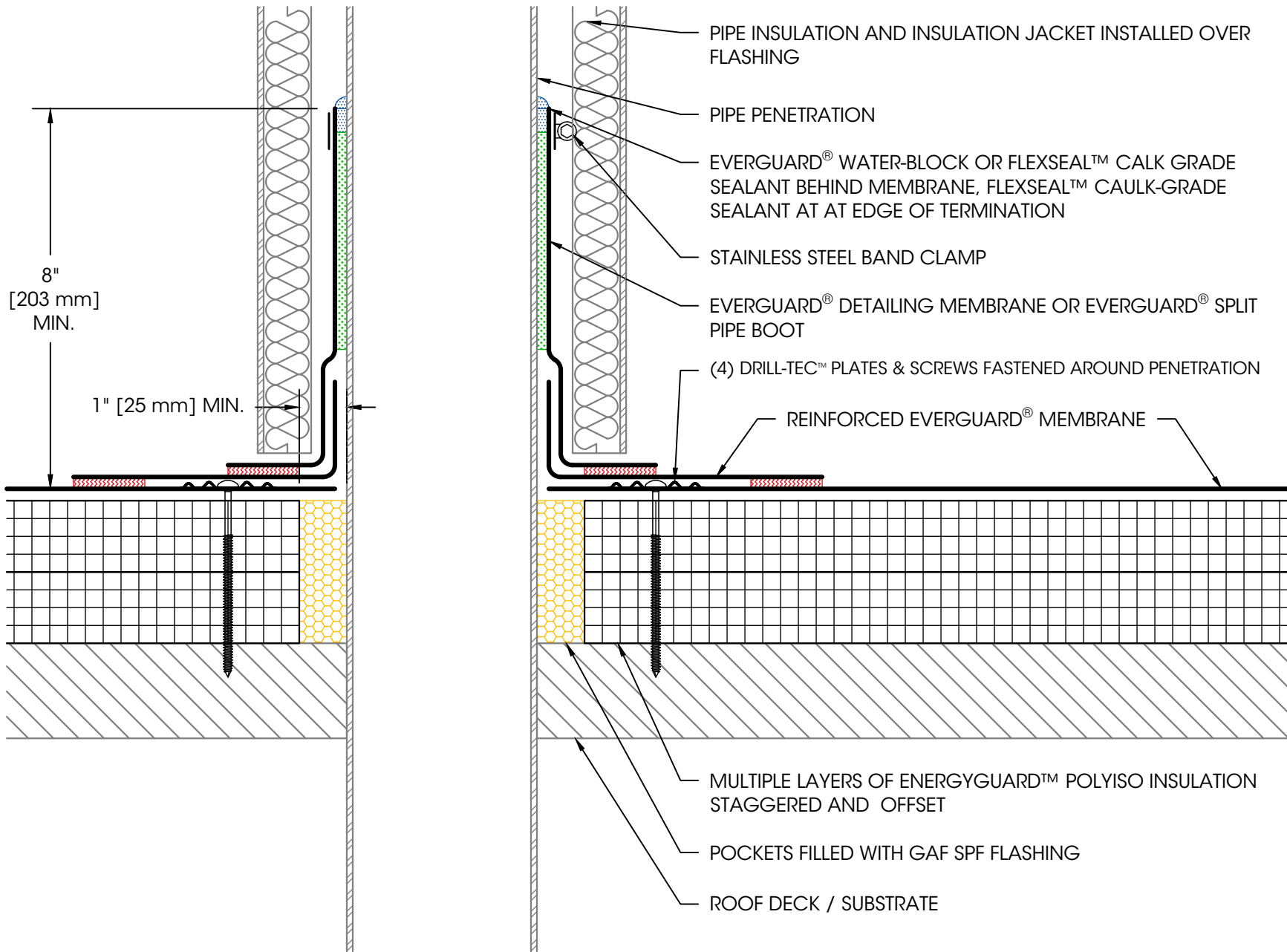
**Date:**  
4/23/2025

**Scale:**  
Not To Scale

**Detail No.**  
075419

**506B**

## Split Conical Pipe Boot Installation



**We  
protect  
what  
matters  
most™**

**Legend:**

Heat Weld



Sealant



Adhesive



Foam



**Product:**

EverGuard PVC

**Installation:**

Cold Storage  
Systems

**Maximum  
Warranty:**

—

**Date:**

4/23/2025

**Scale:**

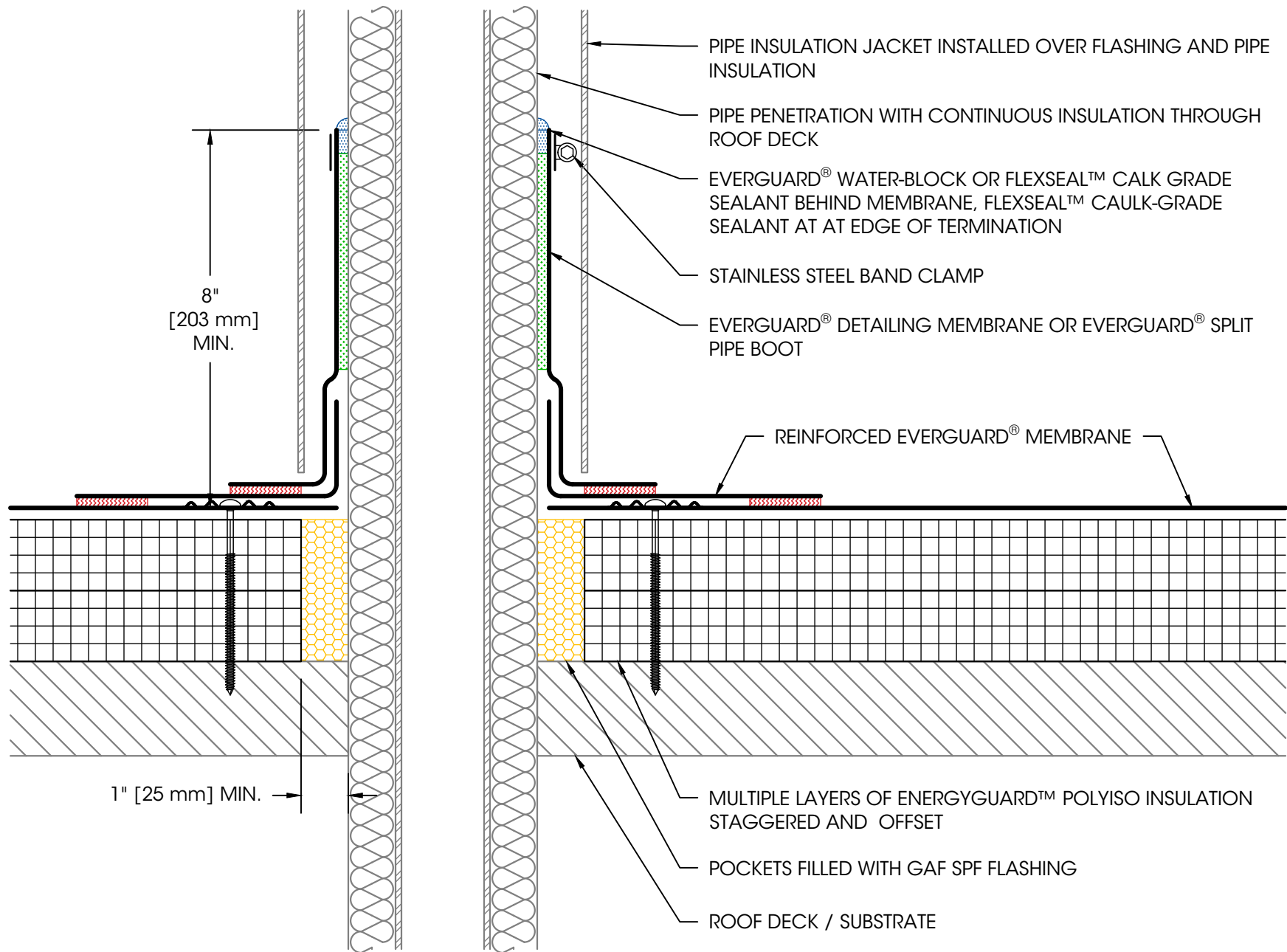
Not To Scale

**Detail No.**

075419

**506C**

## Insulated Pipe Penetration with Insulation Over Flashing



**We  
protect  
what  
matters  
most™**

**Legend:**

Heat Weld



Sealant



Adhesive



Foam



**Product:**

EverGuard PVC

**Installation:**

Cold Storage  
Systems

**Maximum  
Warranty:**

—

**Date:**

4/23/2025

**Scale:**

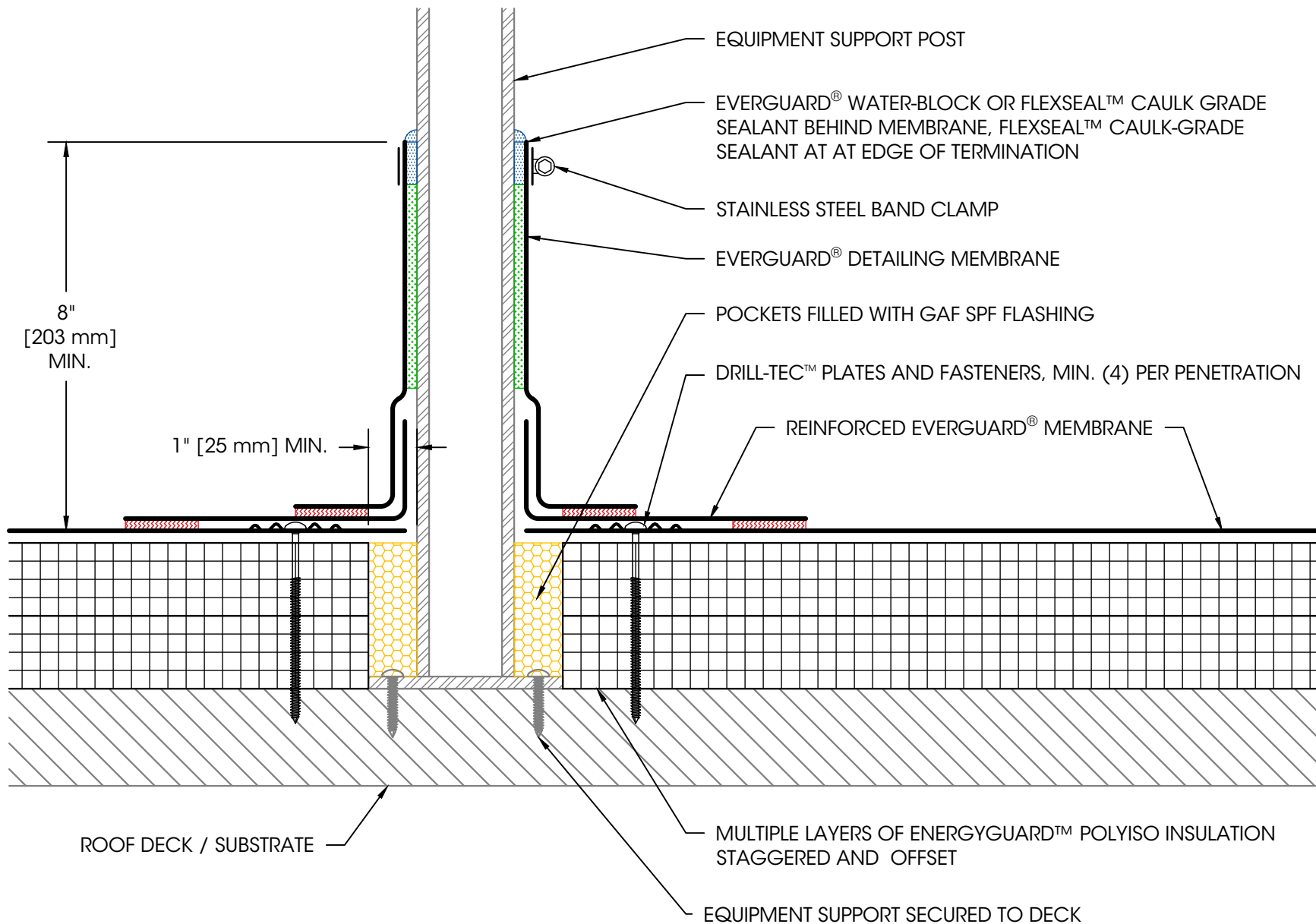
Not To Scale

**Detail No.**

075419

**506D**

## Insulated Pipe Penetration with Flashing Over Insulation



**We  
protect  
what  
matters  
most™**

**Legend:**

Heat Weld



Sealant



Adhesive



Foam



**Product:**

EverGuard PVC

**Installation:**

Cold Storage  
Systems

**Maximum  
Warranty:**

—

**Date:**

4/23/2025

**Scale:**

Not To Scale

**Detail No.**

075419

**511C**

## Deck Mounted Equipment Support Post Flashing