

GAF LRF Adhesive M

Low-Rise Foam Adhesive



Description:

LRF Adhesive M is a two-component, low-VOC, multi-purpose, low-rise, polyurethane foamable insulation and fleece-back membrane adhesive. It adheres a variety of insulation and cover board stocks to most roof substrates in both new and reroof applications, including jobs that require multiple insulation layers. It can also secure fleece-back single-ply membranes.

Features and Benefits:

- Low-odor, low-VOC
- Compatible with various substrates
- Available in different packaging to accommodate any size job
 - 1500 ml cartridges
 - 5 gal. bag-in-box
 - 15 gal. drum
 - 50 gal. drum
- Quick cure time
- Can help with filling minor surface irregularities
- Helps minimize deck corrosion and reduces thermal bridging

Compatible Roof Decks and Substrates*:

(Properly evaluated and prepared.)

- Base sheets (sanded)
- Cementitious wood-fiber plank
- Existing sprayed-in-place polyurethane foam†
- Gypsum
- Lightweight insulating concrete
- Modified bitumen (granulated or sanded, no poly film)
- Most vapor barriers (including asphaltic and fleece-top)
- Plywood ($\frac{5}{8}$ "-[15.9 mm] thick min.)
- Smooth and granule-surfaced BUR — Built Up Roof (reroofing applications existing gravel surfaced needs to be swept and cleaned)
- Steel (22-gauge or thicker with approved cross-section)
- Structural concrete

Compatible Roof Insulation and Cover Board*:

- Polyiso (polyisocyanurate) insulation (4' x 4' (1.22 m x 1.22 mm), flat or tapered boards only)
- HD (high-density) polyiso cover board (4' x 4' (1.22 m x 1.22 mm), boards only)
- High-density wood fiber
- Gypsum cover boards [4' x 4' (1.22 m x 1.22 mm) or 4' x 8' (1.22 m x 2.44 m)]
- Asphaltic cover boards
- Most extruded polystyrene (XPS) (check with manufacturer for compatibility)
- Most expanded polystyrene (EPS) (check with manufacturer for compatibility)

Codes and Compliance:

- FM Approved per Approval Standard 4470. Refer to RoofNav.com for approved assemblies.
- Miami-Dade County Product Control Approved
- Classified by UL in accordance with ANSI/UL 790. Refer to UL Product iQ for specific assemblies
- State of Florida Approved



Product Information:

- Shelf life of 18 months from the date of manufacture when stored in upright position in original, unopened containers at 60°F – 90°F (15.6°C – 35°C)
- Storage temperatures above the recommended range will shorten shelf life
- Store in a covered, secure location
- Keep from freezing
- Product stored below 60°F (15.6°C) must be given sufficient time (minimum 24 hrs.) for the adhesive to warm to minimum 70°F (21.1°C) prior to use
- Do not store in direct sunlight or temperatures above 95°F (35°C)

* For complete substrate preparation and application instructions for GAF guarantee-eligible systems, please consult the applicable system installation and specification manual available at gaf.com. Not all uses of this adhesive with these substrates will comply with applicable codes. For installations that comply with applicable codes, refer to agency listings.

† Needs to have waterproofing layer removed/scarified so that surface is smooth and level to offer a level substrate.



Visit gaf.com

For additional information, contact GAF Design Services at 1-877-423-7663 or designservices@gaf.com

We protect what matters most™

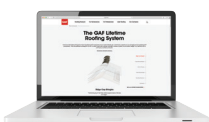


Insulation and Fleece-Back Membrane

Product	LRF Adhesive M	LRF Adhesive M	LRF Adhesive M	LRF Adhesive M	TPO LRF Adhesive M Low Temp <small>Insulation and TPO only</small>	TPO LRF Adhesive M LTA <small>Insulation and TPO only</small>
Delivery Method	Cartridge	5 gal. Bag-in-Box	15 gal. Drum	50 gal. Drum	Cartridge	Cartridge
Item Codes	418H	Part A: 418K Part B: 418L	418P (Parts A & B)	418Q (Parts A & B)	418V	418001
Compatible Substrates	Structural Concrete/Gypsum/Cementitious Wood Fiber/Lightweight Insulating Concrete/ 22-Gauge Steel (insulation and cover boards only)/Wood/Smooth or Granule Surfaced BUR/ Vapor Retarders/Base Sheets/Insulation and Cover Boards*					
Ambient/ Surface Install Temperature	25°F and rising				0°F and rising	
Storage Temperature	Cool, dry 45°F – 95°F					
Shelf Life	18 mos @ proper storage temperatures					
Coverage Rate per Case / Set at 12" o.c. Bead†	Approx. 600 sq. ft./ 4 – 6 squares per case	Approx. 2,500 – 3,000 sq. ft./25 – 30 squares per set	Approx. 7,500 – 9,000 sq ft./75 – 90 squares per set	Approx. 25,000 – 30,000 sq ft./250 – 300 squares per set	Approx. 600 sq. ft./4 – 6 squares per case	Approx. 600 sq. ft./4 – 6 squares per case
Spacing/Spatter	¾" – 1" Max 12" o.c. bead/0.55 – 0.75 gal./Square spatter Fleece-back Membrane ½" – ¾" Max 12" o.c. Insulation Board				¾" – 1" Max 12" o.c. TPO Fleece-back Membrane ¼" – ½" Max 12" o.c. Insulation Board	
Tack/Setup Time @ approx. 70°F	3 – 5 min. tack time/10 – 12 min. Setup time depending on ambient temperature.					
Dispensing Unit	Handheld or powered cartridge applicator gun	Bulk adhesives dispensed by low-pressure pump cart			Handheld or powered cartridge applicator gun	
Packaging Type per Set	4 sets of 1.5 L cartridges	10 gal. (5 gal. part A, 5 gal. part B) bag-in-box	30 gal. (15 gal. part A, 15 gal. part B) bag-in-box	100 gal. (50 gal. part A, 50 gal. part B) bag-in-box	4 sets of 1.5 L cartridges	4 sets of 1.5 L cartridges
VOC Content	32 g/L (after mixing using USEPA Test Method 24)				18 g/L (after mixing using USEPA Test Method 24)	
Weight per Product	20 lb. per carton (4 per case)	54 lb. (part A) 46 lb. (part B)	174 lb. (part A) 150 lb. (part B)	552 lb. (part A) 472 lb. (part B)	20 lb. per carton (4 per carton)	20 lb. per carton (4 per carton)

*To ensure substrate compatibility, adhesion testing is recommended. For instructions on proper usage of this product, please refer to the EverGuard® TPO/PVC Adhered Roofing System Overview & General Requirements Manual.

† Coverage rates are approximate and provided for guidance purposes only. Actual coverage may depend upon substrate and installation methods.

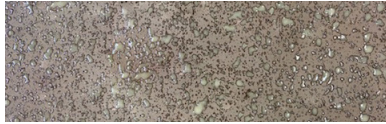


Visit gaf.com

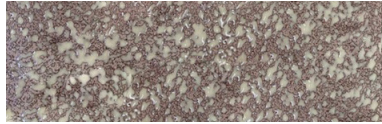
We protect what matters most™



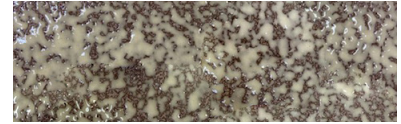
Examples of coverage for splatter patterns (Fleece-back single-ply membrane attachment only)



Not enough coverage



Good coverage



Too much coverage

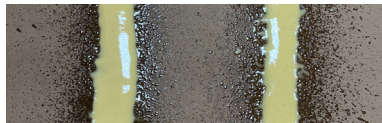
Good coverage recommendations are based on a typical application of 3 lb. (1.36 kg) adhesive applied per 100 sq. ft. of area.

Examples of proper adhesive ratio for bead application



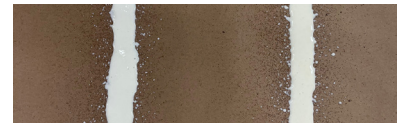
Good ratio of Part A / Part B

Gray-green color.
Low-rise, tacky foam after cure.



Too much of Part A

Slow to rise / no reaction. Yellow in color.
Brittle foam after cure.



Too much of Part B

Very fast reaction / skin over. Blue-gray color.
Soft, flexible foam after cure.

Ribbon Application (Insulation) / Splatter Application (Fleece-back Membrane)[†]

Spacing	4" (102 mm) on-center	6" (152 mm) on-center	12" (305 mm) on-center	Splatter
15 gal. set	3,000 sq. ft./30 sq. coverage	4,500 sq. ft./45 sq. coverage	7,500 sq. ft./75 sq. coverage	6,000 sq. ft./60 sq. coverage
50 gal. set	10,000 sq. ft./100 sq. coverage	15,000 sq. ft./150 sq. coverage	25,000 sq. ft./250 sq. coverage	20,000 sq. ft./200 sq. coverage

* Prior to application, store for approx. 36 to 72 hours at room temperature. Colder cartridge/drum temperatures will result in excessive foam rise and cure times as well as excessive workload on dispensing equipment, or off ratio conditions. Do not freeze.

[†] When installed in accordance with GAF's application instructions. Results may vary depending upon application temperature range, porosity of substrate and insulation boards, type of substrate, bead size, etc.



Visit **gaf.com**

We protect what matters most™

