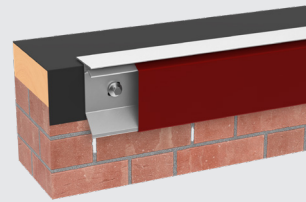
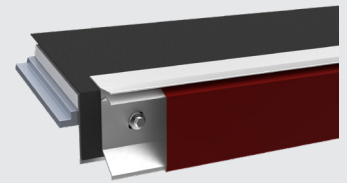


EverGuard® **ProDripEdge** Perimeter Edge Metal



Flat



Pitched

Description:

EverGuard® Pro Drip Edge combines high performance with an attractive appearance. The extruded aluminum anchor bar can be used to securely terminate single-ply membranes, providing protection superior to any shop-fabricated drip edge. With a variety of unique applications, the EverGuard® Pro Drip Edge is versatile and easy to install.

Features and Benefits:

- Full snap-on design with extruded aluminum bar for easy installation.
- Sizes range from 3" (76.2 mm) – 7.5" (190.5mm) face heights to accommodate multiple nailers and wall requirements.
- Covers can be manufactured in 24 ga. steel and .040" aluminum.
- Express, standard, and premium colors and finishes are available to meet your job requirements and include a 30-year Kynar 500® finish warranty on coil-coated standard colors. Custom colors are also available.
- A limited ten- (10) year warranty is included for post-painted Kynar®-coated aluminum applications unless otherwise stated. A twenty- (20) year warranty is also available only upon request at the time of order.*

Codes and Compliance:

- Tested per ANSI/SPRI/FM 4435/ES-1 Standard to comply with the International Building Code

- FM approved for wind uplift protection. Refer to RoofNav.com for actual assemblies



- Miami-Dade Approved



10 Express Colors*

Express Colors are available for quick shipping to meet your job requirements.†

Almond	Bone White	Cityscape	Clear Anodized	Dark Bronze
Medium Bronze	Sandstone	Sierra Tan	Slate Gray	Stone White

For standard and premium colors, please refer to the GAF color chart, available at gaf.com/perimeteredgemetal. Custom colors are also available.

Product Specifications		
Standard Sizes	<ul style="list-style-type: none"> ■ 3 in. (76.2 mm) ■ 4.5 in. (114.3 mm) 	<ul style="list-style-type: none"> ■ 6 in. (177.8 mm) ■ 7.5 in. (190.5 mm)
Length	12 ft. (6.10 m)	
Materials	<ul style="list-style-type: none"> ■ 24 ga. steel 	<ul style="list-style-type: none"> ■ .040" aluminum
Finishes	<ul style="list-style-type: none"> ■ Mill aluminum ■ Pre-finished Kynar 500® (See standard color chart) ■ Premium pre-finished Kynar 500® (See standard color chart) ■ Post-finished Kynar 500® ■ Pre-finished anodized aluminum – clear, bronze, or black ■ Post-finished anodized aluminum ■ Custom post-coated Kynar 500® finishes are available 	
Pre-Punched Holes	12 in. (305 mm) o.c.	

* It is difficult to reproduce the color clarity of these products. Before selecting your color, please contact your local GAF territory manager to request a paint chip for accurate color representation.

† Express Colors available in shorter lead times for 24 ga., .040", and .050" only. Standard lead times, which may be longer, apply for 22 ga. and .063".



Visit gaf.com

For additional information, contact GAF Design Services at 1-877-423-7663 or designservices@gaf.com

We protect what matters most™

