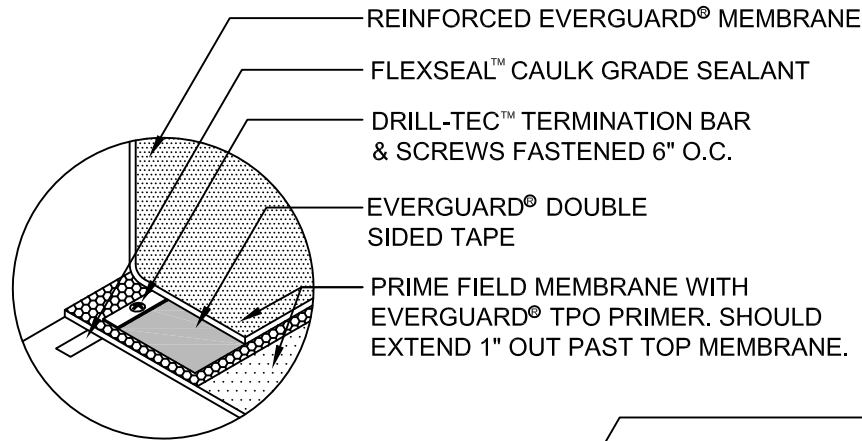
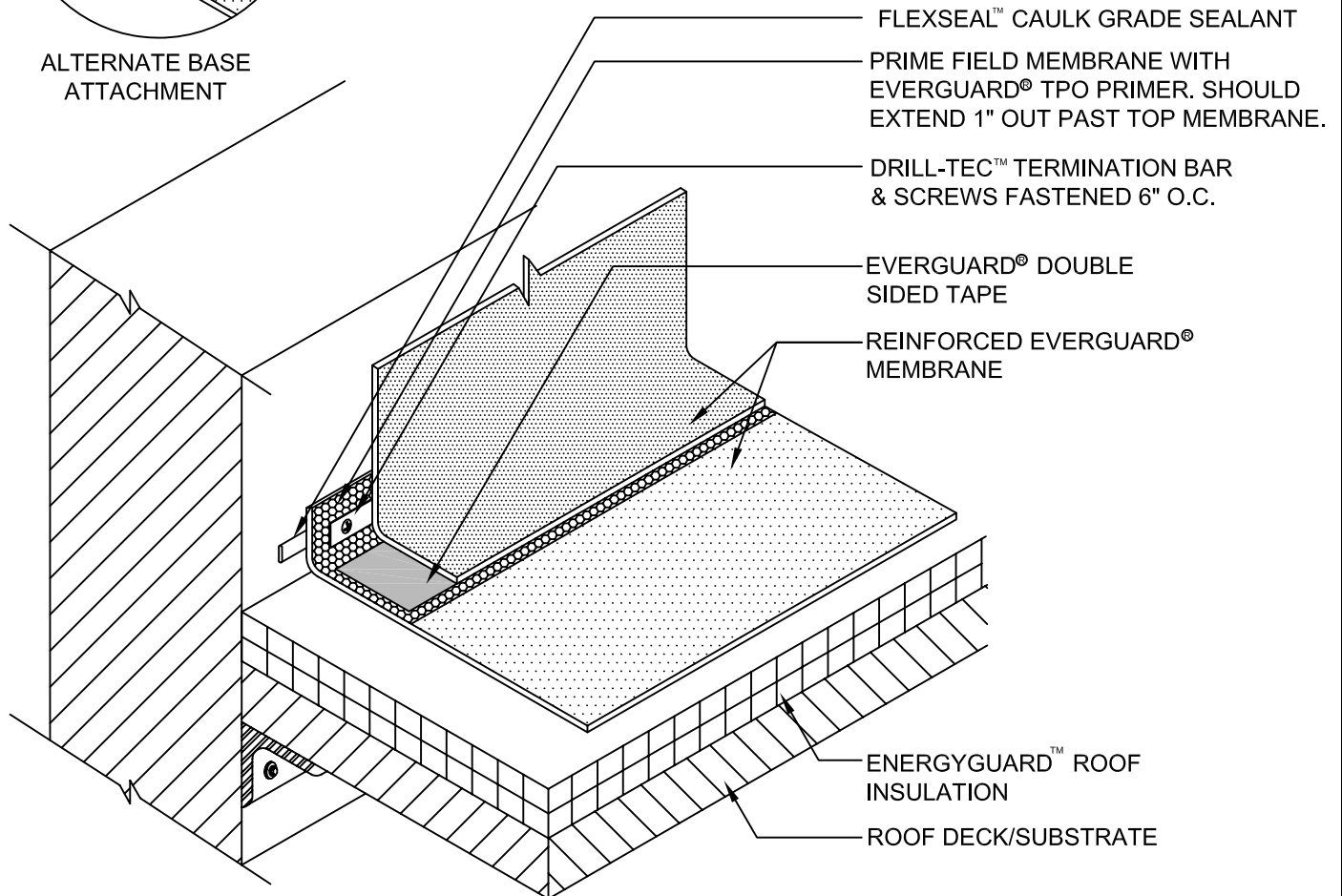


FOR JOBS UP TO 50 SQUARES ONLY



ALTERNATE BASE ATTACHMENT



NOTE:

1. MEMBRANE MUST BE PRIMED AND DRY PRIOR TO APPLYING EVERGUARD® DOUBLE SIDED TAPE.
2. REFER TO EVERGUARD® 300 SERIES DETAIL FOR WALL TERMINATION.
3. APPLY FLEXSEAL™ CAULK GRADE SEALANT TO ALL CUT REINFORCED TPO EDGES (REFER TO EVERGUARD® DETAIL 115).



EverGuard
SINGLE-PLY ROOFING SYSTEMS
PARAPET WALL &
CURB SERIES

DRAWING #

737

SCALE
N.T.S.

**DRY HUNG WALL BASE ATTACHMENT
DETAIL - UP TO 24" HIGH**

THIS DETAIL APPLIES TO:

**Taped Seam
Systems**

REVISION DATE
5-1-15

www.gaf.com
1 Campus Drive,
Parsippany, NJ 07054