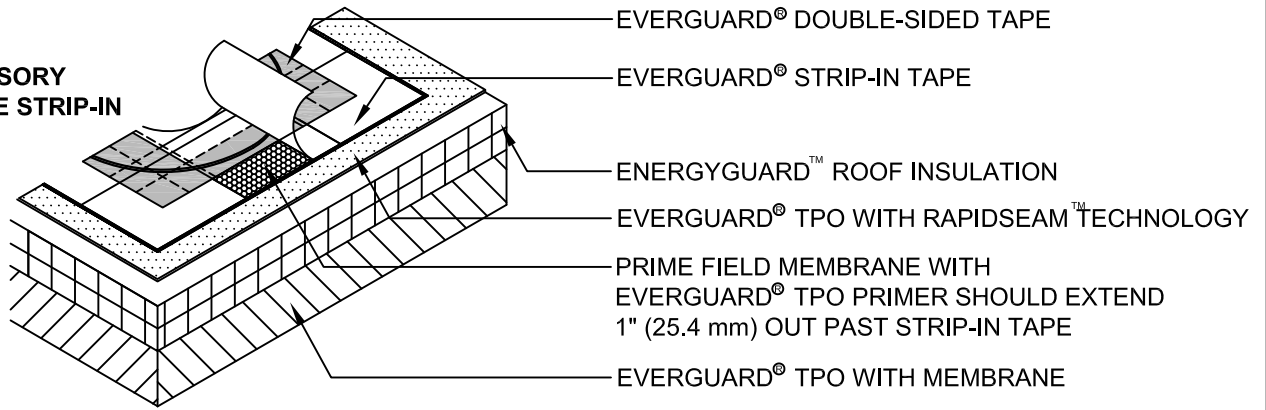
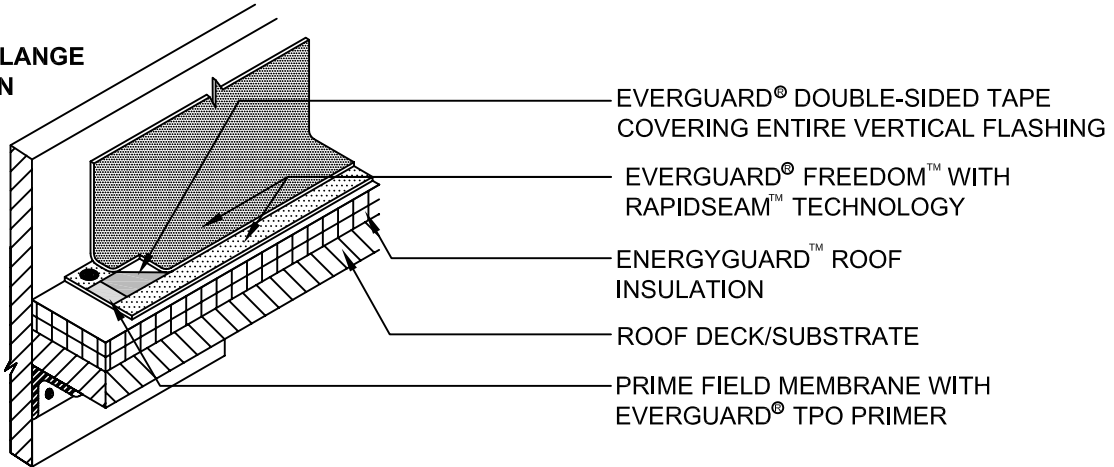


**ACCESSORY  
FLANGE STRIP-IN**



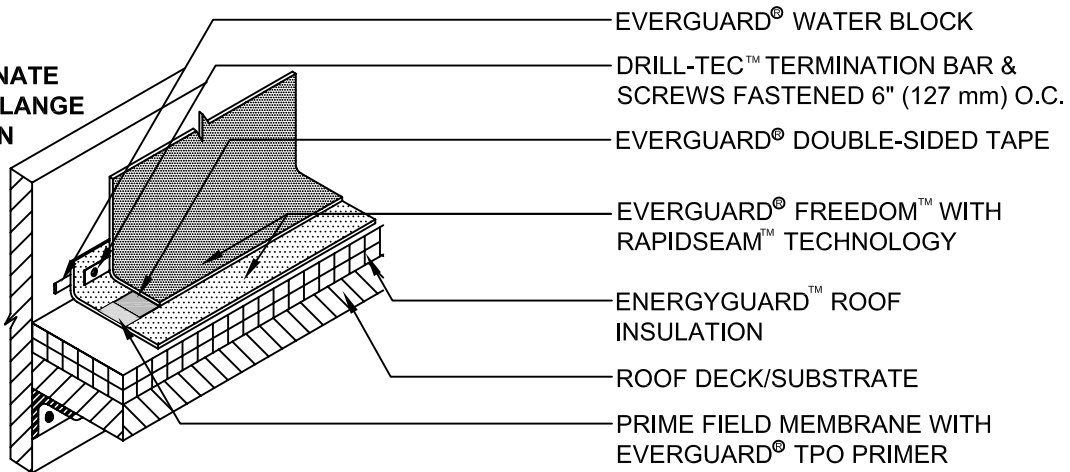
- EVERGUARD® DOUBLE-SIDED TAPE
- EVERGUARD® STRIP-IN TAPE
- ENERGYGUARD™ ROOF INSULATION
- EVERGUARD® TPO WITH RAPIDSEAM™ TECHNOLOGY
- PRIME FIELD MEMBRANE WITH  
EVERGUARD® TPO PRIMER SHOULD EXTEND  
1" (25.4 mm) OUT PAST STRIP-IN TAPE
- EVERGUARD® TPO WITH MEMBRANE

**BASE FLANGE  
STRIP-IN**



- EVERGUARD® DOUBLE-SIDED TAPE  
COVERING ENTIRE VERTICAL FLASHING
- EVERGUARD® FREEDOM™ WITH  
RAPIDSEAM™ TECHNOLOGY
- ENERGYGUARD™ ROOF  
INSULATION
- ROOF DECK/SUBSTRATE
- PRIME FIELD MEMBRANE WITH  
EVERGUARD® TPO PRIMER

**ALTERNATE  
BASE FLANGE  
STRIP-IN**



- EVERGUARD® WATER BLOCK
- DRILL-TEC™ TERMINATION BAR &  
SCREWS FASTENED 6" (127 mm) O.C.
- EVERGUARD® DOUBLE-SIDED TAPE
- EVERGUARD® FREEDOM™ WITH  
RAPIDSEAM™ TECHNOLOGY
- ENERGYGUARD™ ROOF  
INSULATION
- ROOF DECK/SUBSTRATE
- PRIME FIELD MEMBRANE WITH  
EVERGUARD® TPO PRIMER

**NOTE:**

1. WALL MUST BE PRIMED PRIOR TO INSTALLING WALL FLASHING
2. PRIMED MEMBRANE MUST BE DRY PRIOR TO APPLYING EVERGUARD® DOUBLE SIDED TAPE.
3. APPLY EVERGUARD® TPO CUT EDGE SEALANT TO ALL CUT REINFORCED TPO EDGES  
(REFER TO EVERGUARD® DETAIL 115).



www.gaf.com  
1 Campus Drive,  
Parsippany, NJ 07054

**EverGuard**  
SINGLE-PLY ROOFING SYSTEMS  
FIELD OF ROOF  
SERIES

DRAWING #

**330**

SCALE  
N.T.S.

**RAPIDSEAM™ TECHNOLOGY  
STRIP-IN DETAILS**

THIS DETAIL APPLIES TO:  
**Self-Adhered  
Systems**  
(RAPIDSEAM™ TECHNOLOGY  
MEMBRANE ONLY)

REVISION DATE  
**6-20-16**