

EverGuard[®] PVC Universal Corner Sell Sheet

Updated: 10/14



*Quality You Can Trust...From
North America's Largest Roofing Manufacturer!™*



PVC Molded Accessories

Description

EverGuard[®] PVC single-ply roofing system molded accessories provide roofing contractors an easy-to-install, factory-built detail. EverGuard[®] molded accessories are manufactured using a proprietary formulation designed for use with GAF's EverGuard[®] PVC single-ply membranes.

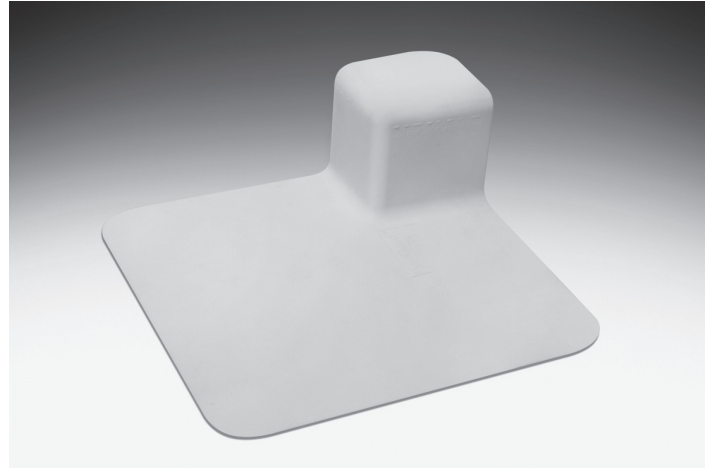
- **Cost effective...**
Reduces installed costs by up to 25%
- **Improved reliability...**
Factory-built accessories reduce risk of leaks and callbacks
- **Improved aesthetics...**
Uniform look

Application

EverGuard[®] PVC molded accessories are designed for use with GAF EverGuard[®] PVC single-ply membranes. The molded accessories may be installed on mechanically attached or fully adhered systems. EverGuard[®] molded accessories are installed using conventional techniques. See published application and specifications manual for detailed instructions.

Product Information

EverGuard[®] Universal Corners accommodate both inside and outside corners of base and curb flashings. Simply cut at markings to produce either an inside or outside corner reinforcement. EverGuard[®] Universal Corners eliminate the need to inventory two items.



Universal Corner

- One standard size
- Can be cut to accommodate use as either an inside or outside corner reinforcement
- Molded to 70 mil thickness from PVC

SPECIFICATIONS	
Size:	3" x 3" with Flange
Thickness:	.070" nominal
SHIPPING SPECIFICATIONS	
Corners per carton:	20
Weight per carton:	10.2 lbs.
Cartons per pallet:	60
PRODUCT SKUs	
White	85A4

Also Available...



Fluted Corner



Inside Corner



Vent Boot



Square Tube Wrap



Pourable Sealer Pocket

Quality You Can Trust...From North America's Largest Roofing Manufacturer![™]