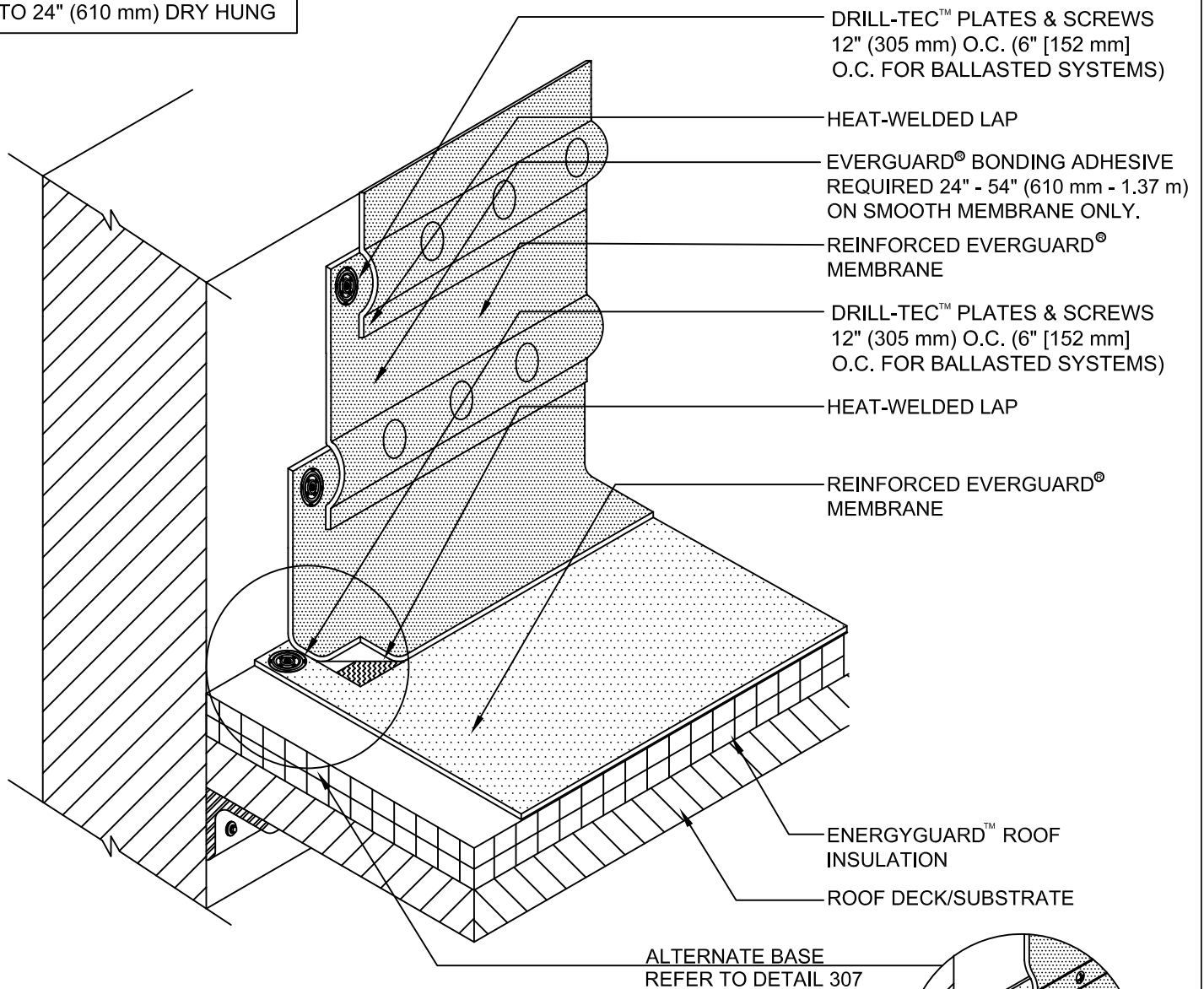


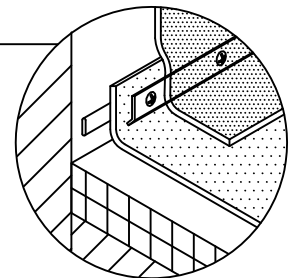
**FLASHING KEY**

- OVER 24" (610 mm) REQUIRES BONDING ADHESIVE
- UP TO 24" (610 mm) DRY HUNG



**NOTE:**

1. FOR INSULATION THICKNESS GREATER THAN 8" (203 mm), A HARD BOARD IS REQUIRED ON MECHANICALLY FASTENED SYSTEMS ONLY.
2. 24" (610 mm) MAX. DIMENSION FOR LOOSE-APPLIED FLASHINGS.
3. 54" (1.37 m) MAX. DIMENSION FOR FULLY ADHERED FLASHINGS.
4. IF EVERGUARD® FREEDOM™ MEMBRANE IS USED, BONDING ADHESIVE IS NOT NEEDED AND WALL MUST BE PRIMED.
5. APPLY EVERGUARD® TPO CUT EDGE SEALANT TO ALL CUT REINFORCED TPO EDGES (REFER TO EVERGUARD® DETAIL 115).



**EverGuard**  
SINGLE-PLY ROOFING SYSTEMS  
PARAPET WALL &  
CURB SERIES

DRAWING #  
**317C**  
SCALE  
N.T.S.

**HIGH WALL FLASHING DETAIL  
- WITH PLATES AND FASTENERS**

**THIS DETAIL APPLIES TO:**  
Adhered Systems  
Ballasted Systems  
Mechanically Attached Systems  
Self-Adhered Systems  
TriPosite Systems

REVISION DATE  
**8-31-16**